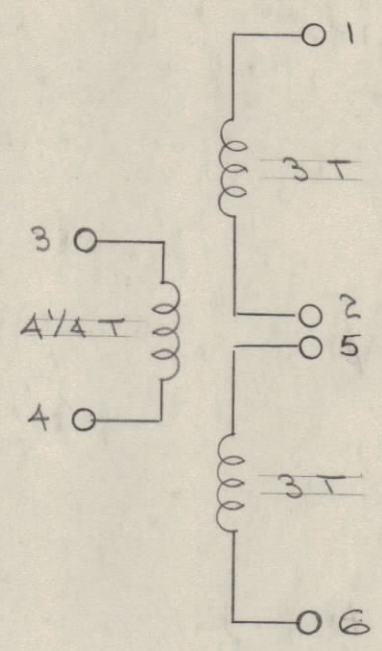
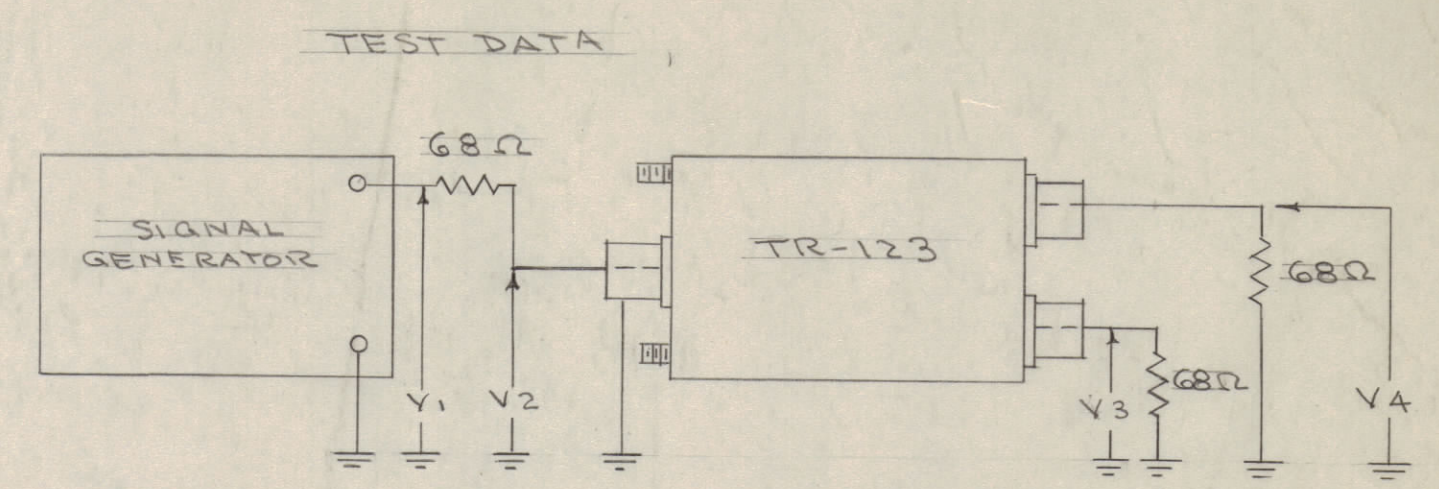
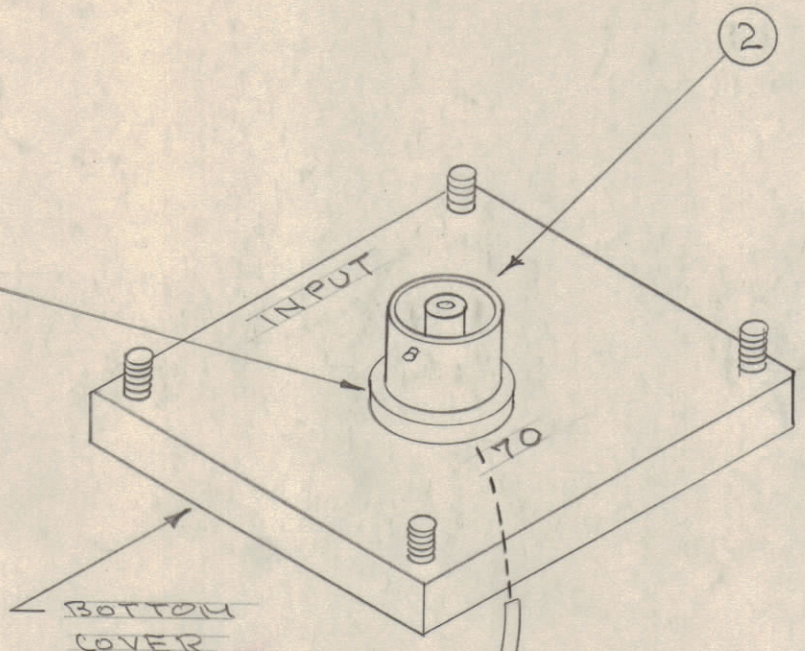


IF IT IS FOUND DESIRABLE TO CHANGE ANY TOLERANCE OR OTHER DETAIL SPECIFIED ON THIS DRAWING NOTIFY THE PURCHASER PROMPTLY.
 MAXIMUM ALLOWABLE TOLERANCES HAVE BEEN DETERMINED AND DEVIATIONS WILL BE CAUSE FOR REJECTION. REMOVE ALL BURRS AND SHARP EDGES

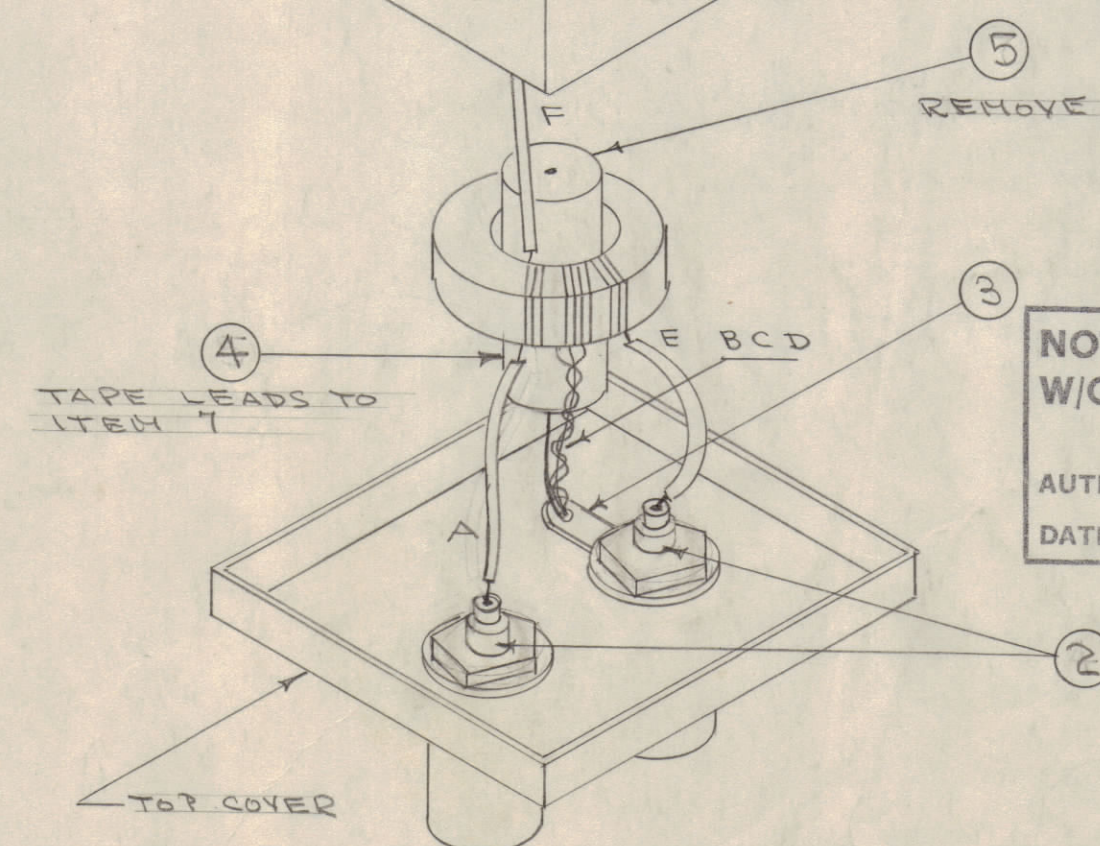
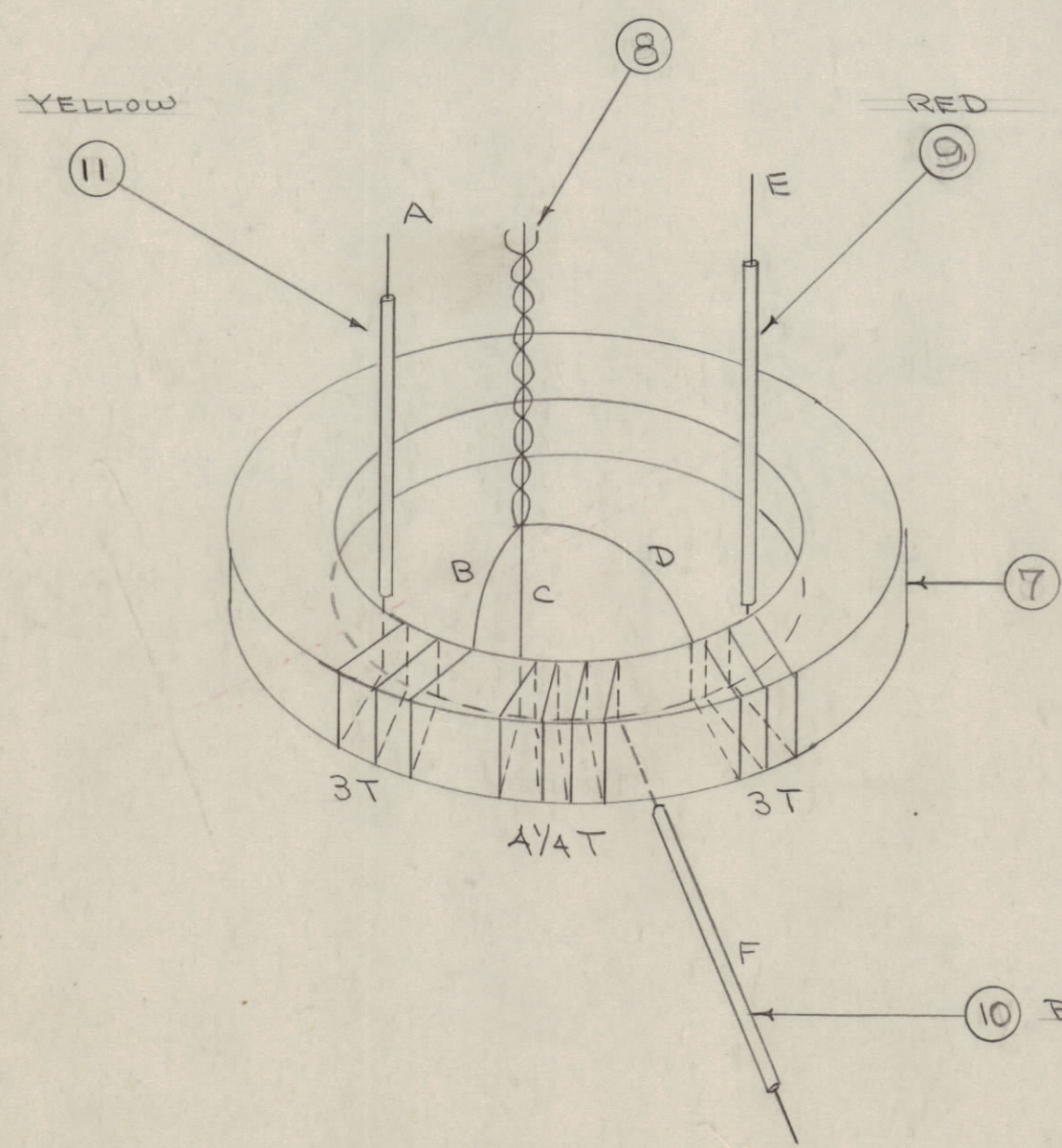
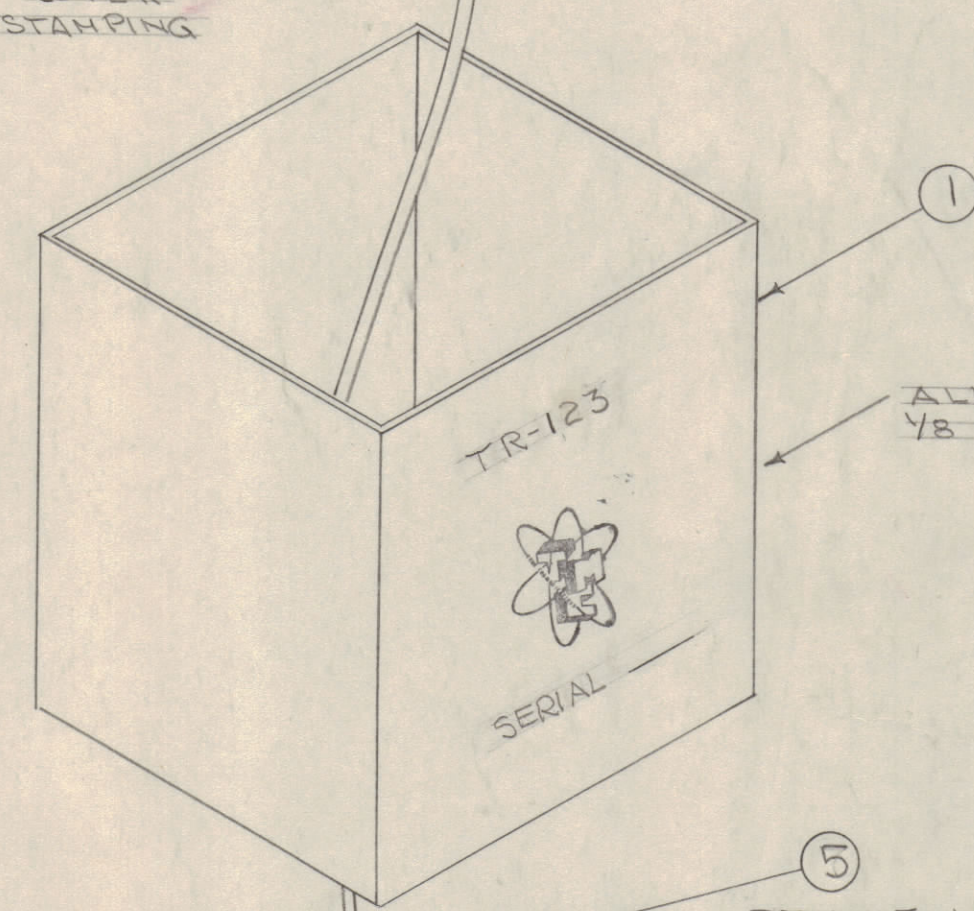


NOTE:
 SPOT SOLDER TO
 PREVENT TWISTING

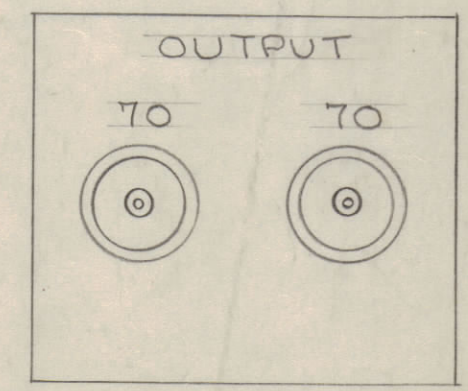


FMC	V ₁	V ₂	V ₃	V ₄
2	1.0	.51-.54	.30-.32	.30-.31
8	1.0	.52-.54	.28-.30	.29-.30
16	1.0	.57-.62	.26-.29	.27-.28
30	1.0	.69-.76	.22-.25	.22-.24

VTVM HP 410B OR EQUIV.



**NOT TO BE RELEASED
 W/O AUTHORIZATION**
 AUTH. BY: _____
 DATE: _____



STAMPING DETAIL
 TOP COVER

A-1071 B

REQ.	ITEM	PART NO.	DESCRIPTION	SYMBOL
X	12	GL-106	COMPOUND, PLASTIC	
1/8"	11	PX-104-2-.022	INSULATION, SLEEVING (YEL)	
1/8"	10	PX-104-1-.022	" " (BLK)	
1/8"	9	PX-104-3-.022	" " (RED)	
X	8	WI-102-9	WIRE, MAGNET	
1	7	CI-104	CORE	
X	6	BS-100	SOLDER, SOFT	
1	5	CN-100-3	CAPACITOR, FIXED	
X	4	TA-100-1	TAPE	
1	3	TE-III-2	LUG	
3	2	UG-657/U	RECEPTACLE	
1	1	BX-141	CASE, TRANSFORMER	

THE TECHNICAL MATERIEL CORP.			
STOCK SIZE		MAMARONECK, NEW YORK	
ASSEMBLY TR-123			
MATERIAL	WEIGHT PER PC.		
TYPE & TEMPER			
DRAWN		ELEC. DES. APP.	MECH. DES. APP.
HEAT TREAT. SPEC.			
CHECKED		FINAL APPROVAL	
FINISH & SPEC. NO.			
CDD 8/10/55		APB	
HAR		APB	
		A-1071 B	

ISSUE	ITEM	CHANGED FROM	DATE	CN. NO.	DRAFTS	CHECKER	ENG. APP.
B		FREQ. CHART COMPL. REV. HP 410 B OR EQUIV. ADD.	11/69	19181	14	WLD	EFM
A	1	NOTE ADDED	9-20-55	1	13	WLD	WLD

TOLERANCES: DEC. DIM. ±, FRAC. DIM. ±, ANGULAR DIM. ±

SCALE: DRILL, PUNCH, COMMERCIAL STOCK SIZES AND MANUFACTURERS TOLERANCES ARE NOT INCLUDED.

MODEL	PROJECT NO.	ASS'Y. NO.	DATE
TR-123			8/10/55

USED ON