

IF IT IS FOUND DESIRABLE TO CHANGE ANY TOLERANCE OR OTHER DETAIL SPECIFIED ON THIS DRAWING NOTIFY THE PURCHASER PROMPTLY.

MAXIMUM ALLOWABLE TOLERANCES HAVE BEEN DETERMINED AND DEVIATIONS WILL BE CAUSE FOR REJECTION. REMOVE ALL BURRS AND SHARP EDGES

CEMENT ITEM (26) TO ITEM (22) WITH ITEM (29)

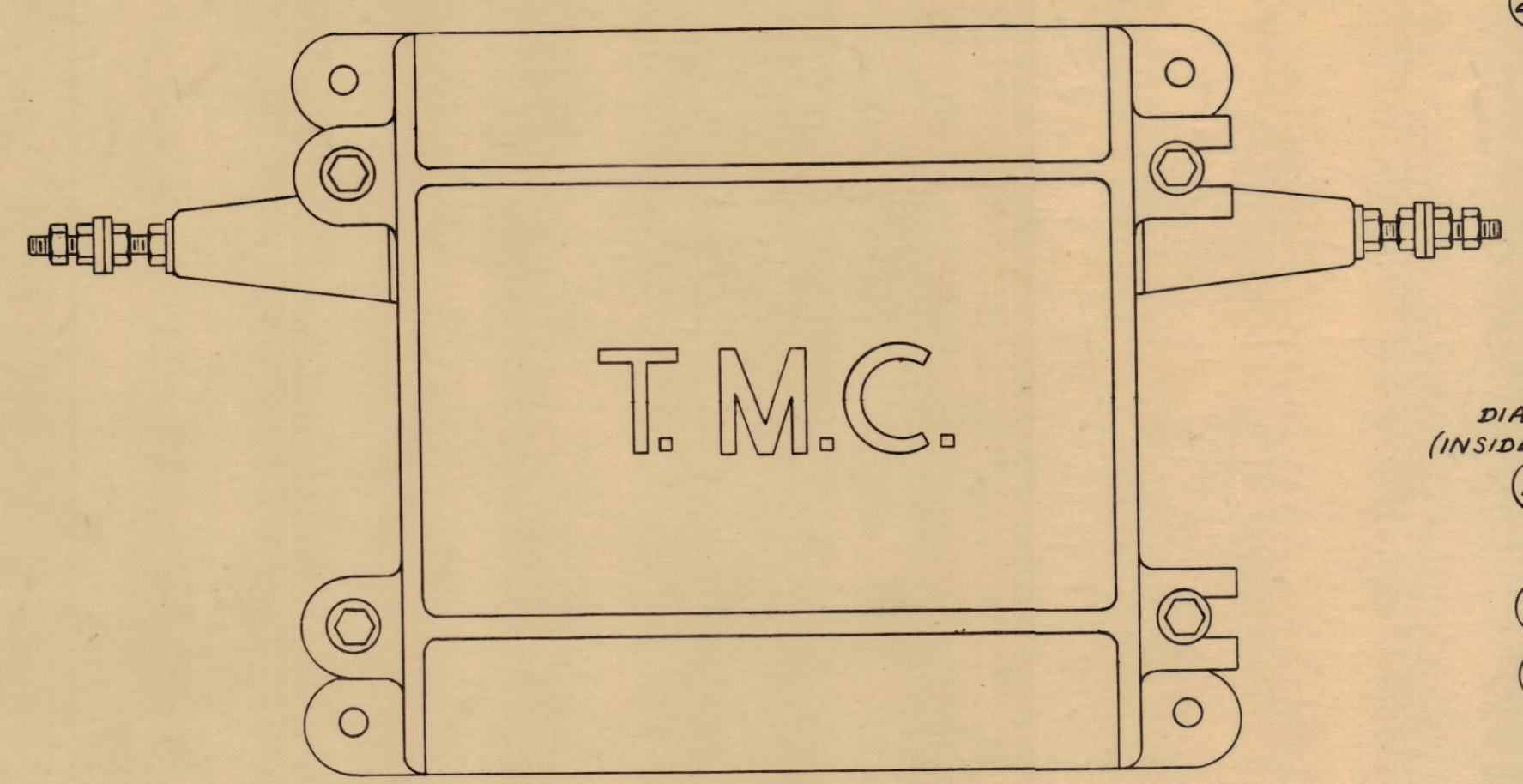
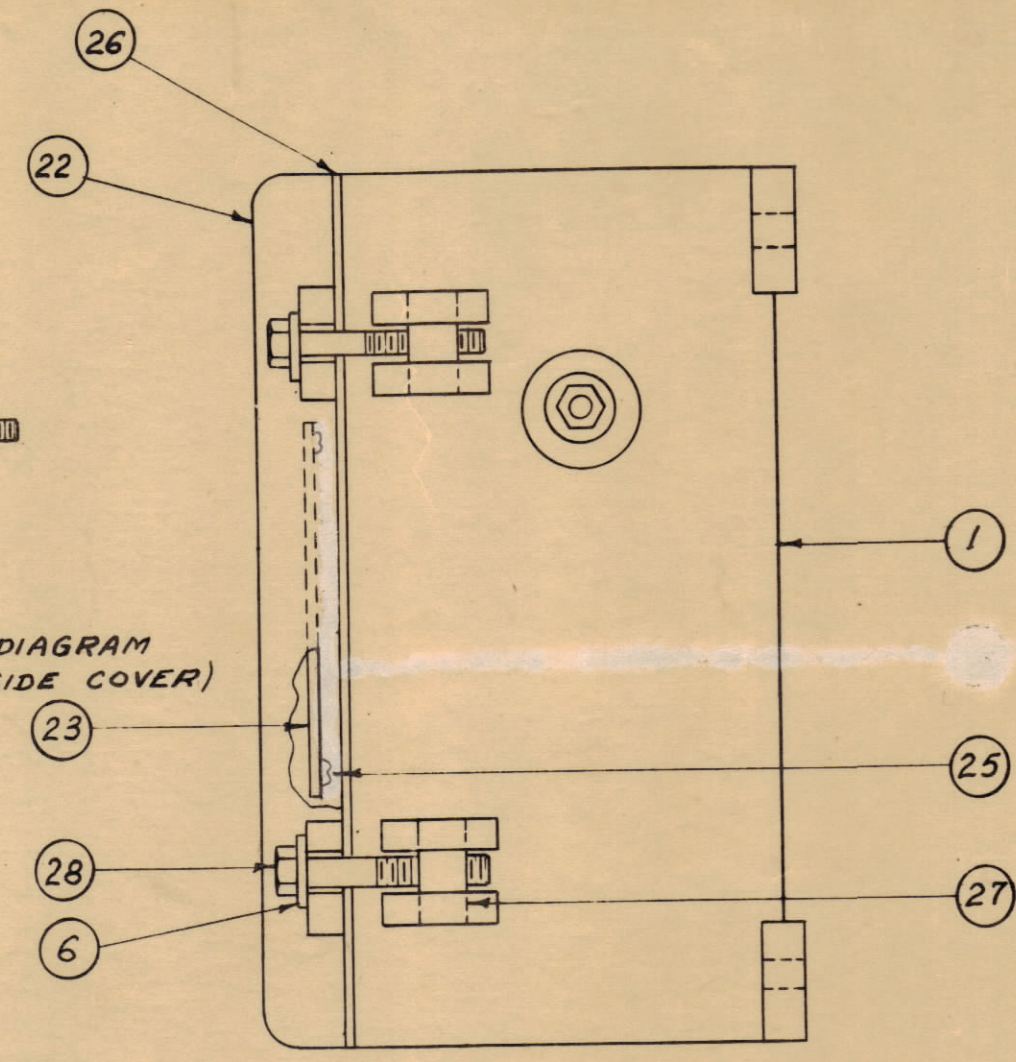
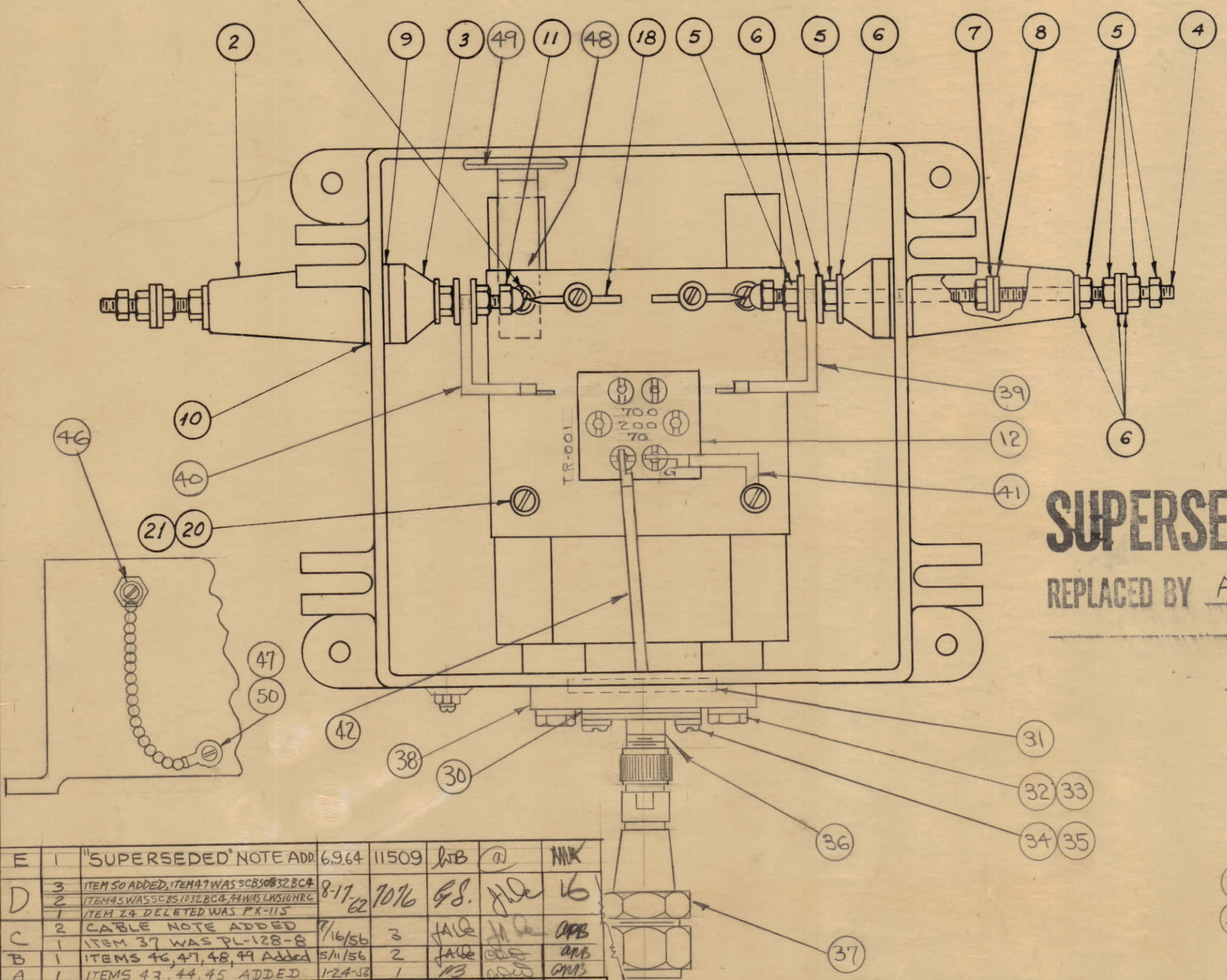


DIAGRAM (INSIDE COVER)



NOTE:
FOR USE WITH 1/8" - 70Ω STYROFLEX CABLE
SEE A-1074.

ADJUST SPARK GAP TO 1/32" SPACING



SUPERSEDED
REPLACED BY A-3080-1

ISSUE	ITEM	CHANGED FROM	DATE	CN. NO.	DRAFTS	CHECKER	ENG. APP.
E	1	"SUPERSEDED" NOTE ADDED	6.9.64	11509	1	MB	MB
D	3	ITEM 50 ADDED, ITEM 47 WAS SCBS0832BC6	8-17-62	1076	2	MB	MB
D	2	ITEM 45 WAS SCBS1032SS3, 44 WAS LWS10MSS					
D	1	ITEM 24 DELETED WAS PX-115					
C	2	CABLE NOTE ADDED	7/16/56	3	MB	MB	MB
C	1	ITEM 37 WAS PL-128-8	5/11/56	2	MB	MB	MB
B	1	ITEMS 46, 47, 48, 49 ADDED	1-24-56	1	MB	MB	MB
A	1	ITEMS 43, 44, 45 ADDED					

TOLERANCES		SCALE:
ALL OTHERS	DEC. DIM. ± FRAC. DIM. ± ANGULAR DIM. ±	DRILL, PUNCH, COMMERCIAL STOCK SIZES AND MANUFACTURERS TOLERANCES ARE NOT INCLUDED.

ITEM 37 SHIPPED AS LOOSE ITEM

REQ. PER UNIT	MODEL	PROJECT NO.	ASS'Y. NO.	DATE
	RAC-16			7-20-55

1	50	LWE06MSS	WASHER, LOCK EXTERNAL TOOTH
2	49	AD-100-1/8	DESSICANT
1	48	MS-933	HOLDER, DESSICANT
1	47	SCBS0632SS3	SCREW, MACHINE
1	46	A-1291	DRAIN PLUG ASSY.
1	45	SCBS1032SS4	SCREW, MACHINE
1	44	LWS10MSS	WASHER, LOCK
1	43	A-1164	GROUND STRAP CASE
1	42	A-876	CONNECTOR, COAX. ASSY.
1	41	A-850	GROUND CONNECTOR, ASSY.
1	40	A-849	CONNECTOR, INST. LEFT
1	39	A-848	CONNECTOR, INST. RIGHT
1	38	PM-119	FLANGE
1	37	PL-128-4	CONNECTOR, ADAPTER
1	36	UG-58A/U	CONNECTOR
4	35	LWS04MSS	WASHER, LOCK
4	34	SCBS0440SS6	SCREW, MACHINE
4	33	SC-108-4	BOLT, HEX HEAD
4	32	LWS25MSS	WASHER, LOCK
1	31	GA-102	GASKET
1	30	GA-116	"
X	29	GL-101-1	CEMENT, PLIOBOND
4	28	SC-108-9	BOLT, HEX.
4	27	PM-100	PIN, COVER BOLT
1	26	GA-103	GASKET, COVER
4	25	SC-102-1	SCREW, THREAD CUTTING
	24	DELETED	DELETED
1	23	LD-227	SCHEMATIC DIAGRAM
1	22	PM-105	COVER

A-1048 E

4	21	SCBS0832BC6	SCREW, MACHINE
4	20	LWE08MRC	WASHER, LOCK
2	19	SCRS0632SM6	SCREW, MACHINE
2	18	PM-103	SPARK ROD
2	17	SCBS0632BC6	SCREW, MACHINE
2	16	PM-102	POST
4	15	NTH0632BC8	NUT, HEX.
6	14	LWE06MRC	WASHER, LOCK
1	13	MS-100	MOUNTING PLATE
1	12	TR-001	TRANSFORMER
2	11	NTC2520BCL	NUT, CAP
2	10	GA-100	GASKET
2	9	GA-101	GASKET
2	8	GA-104	GASKET
2	7	FW25LBC	WASHER, FLAT
16	6	FW25MSS	WASHER, FLAT
12	5	NTH2520SS14	NUT, HEX
2	4	A-100	STUD, SUB-ASS'Y.
2	3	NS-101	INSULATOR, INSIDE
2	2	NS-100	INSULATOR, OUTSIDE
1	1	PM-106	CASE

REQ. ITEM	PART NO.	DESCRIPTION	SYMBOL
#			
STOCK SIZE			
#			
MATERIAL		WEIGHT PER PC.	
#			
TYPE & TEMPER		#	
#			
HEAT TREAT. SPEC.		#	
#			
FINISH & SPEC. NO.		#	

THE TECHNICAL MATERIEL CORP.
MAMARONECK, NEW YORK

MAIN ASSEMBLY

MODEL RAC-16

CDP-7-20-55

DRAWN: JWB
ELEC. DES. APP.:
MECH. DES. APP.:

CHECKED: JWB
FINAL APPROVAL:

A-1048 E