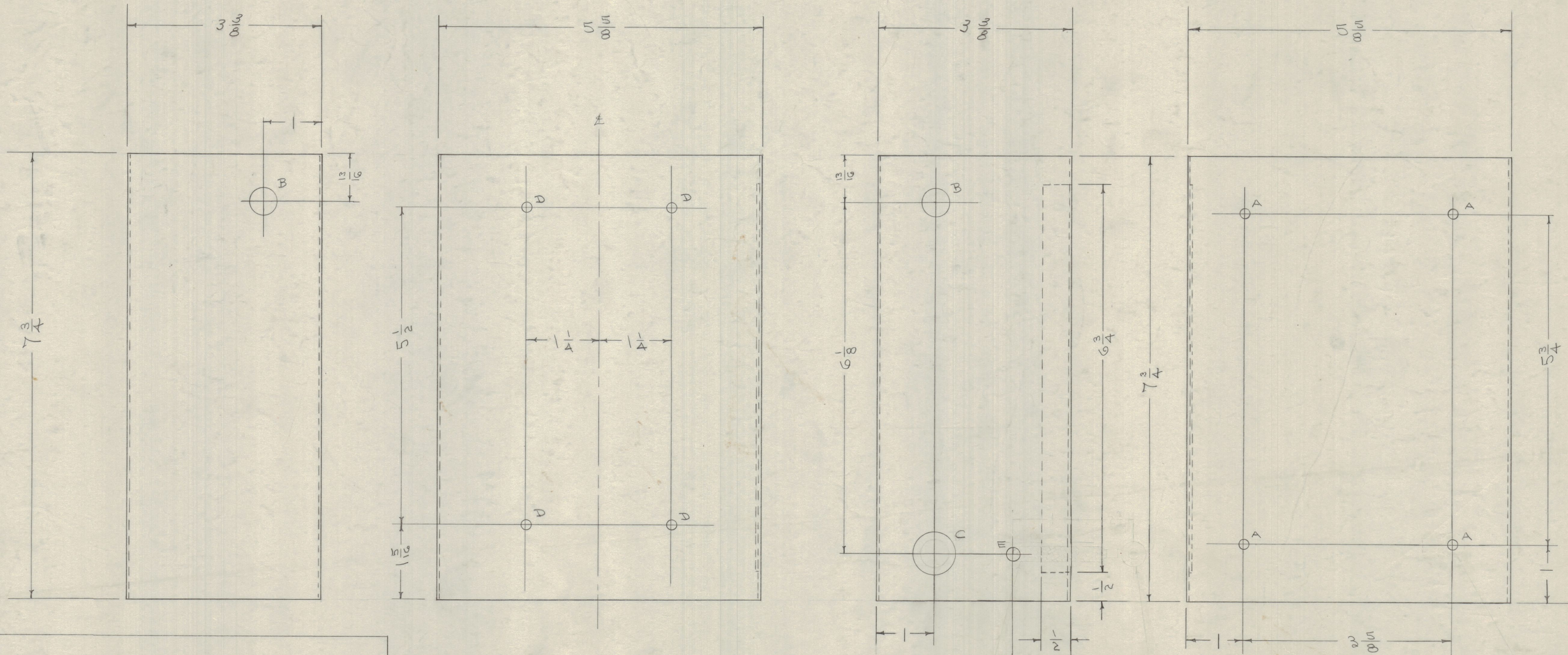
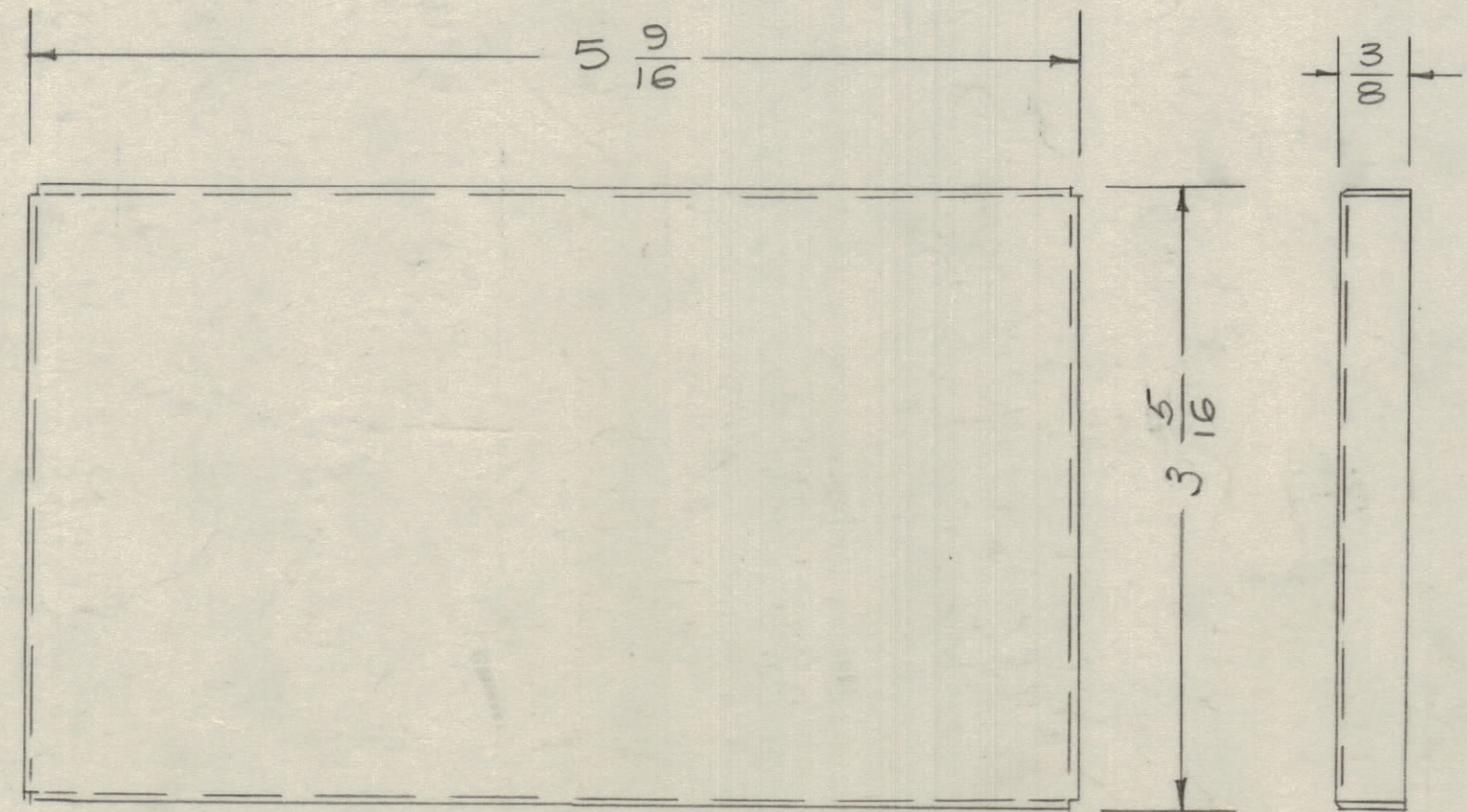


IF IT IS FOUND DESIRABLE TO CHANGE ANY TOLERANCE OR OTHER DETAIL SPECIFIED ON THIS DRAWING NOTIFY THE PURCHASER PROMPTLY.  
 MAXIMUM ALLOWABLE TOLERANCES HAVE BEEN DETERMINED AND DEVIATIONS WILL BE CAUSE FOR REJECTION. REMOVE ALL BURRS AND SHARP EDGES

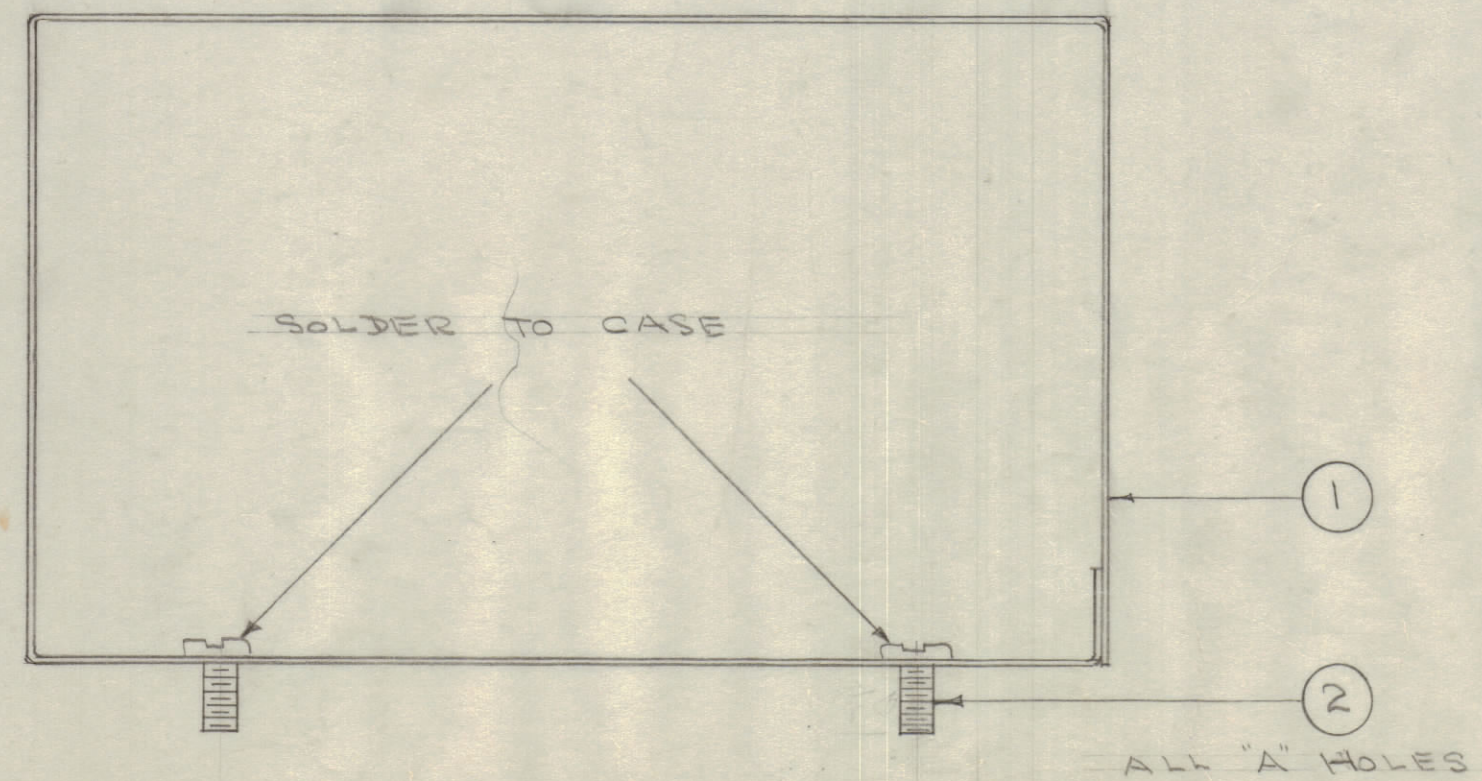


A-1047 A



COVERS (2 REQ.)

MUST FIT INSIDE CAN



- A - 3/16 (.187) D. 4 HOLES REQ.
- B - 1/2 (.500) D. 2 " "
- C - 3/4 (.750) D. 1 " "
- D - 3/16 (.187) D. 4 " "
- E - 1/4 (.250) D. 1 " "

**NOTICE TO PERSONS RECEIVING THIS DRAWING**

THE TECHNICAL MATERIEL CORPORATION claims proprietary right in the material disclosed herein. This drawing is issued in confidence for engineering information only and may not be reproduced or used to manufacture anything shown hereon without permission from THE TECHNICAL MATERIEL CORPORATION or the user. This drawing is loaned for mutual assistance and is subject to recall at any time.

Property of:  
 THE TECHNICAL MATERIEL CORPORATION  
 MAMARONECK, NEW YORK

|            |                |  |        |         |        |         |           |
|------------|----------------|--|--------|---------|--------|---------|-----------|
| ISSUE      | ITEM           | CHANGED FROM   | DATE   | CH. NO. | DRAFTS | CHECKER | ENG. APP. |
| A          | 1              | COVER ADDED (was MS-664)   | 1/8/58 | 1       |        |         |           |
| TOLERANCES |                | SCALE:   |        |         |        |         |           |
| ALL OTHERS | DEC. DIM. ±    | DRILL PUNCH, COMMERCIAL STOCK SIZES AND MANUFACTURERS TOLERANCES ARE NOT INCLUDED. |        |         |        |         |           |
|            | FRAC. DIM. ±   |  |        |         |        |         |           |
|            | ANGULAR DIM. ± |  |        |         |        |         |           |

|               |        |             |           |         |
|---------------|--------|-------------|-----------|---------|
| REQ. PER UNIT | MODEL  | PROJECT NO. | ASSY. NO. | DATE    |
| 1             | TR-138 |             | A-1202    | 7-18-55 |
| USED ON       |        |             |           |         |

|  |            |                        |        |
|--|------------|------------------------|--------|
| REQ. ITEM  | PART NO.   | DESCRIPTION            | SYMBOL |
| X 3  | BS-100     | SOLDER, SOFT           |        |
| A 2  | SCBS103BCG | SCREW, MACHINE         |        |
| 1  | MS-662     | CASE (NO DRAWING)      |        |
| .032 THE TECHNICAL MATERIEL CORP. MAMARONECK, NEW YORK |            |                        |        |
| STOCK SIZE   |            | CASE & COVERS (TR-138) |        |
| MATERIAL   |            | STEEL                  |        |
| WEIGHT PER PC.   |            | DRAWN                  |        |
| TYPE & TEMPER  |            | ELEC. DES. APP.        |        |
| HEAT TREAT. SPEC.                                      |            | MECH. DES. APP.        |        |
| HOT TIN DIPPED   |            | CHECKED                |        |
| FINISH & SPEC. NO.                                     |            | FINAL APPROVAL         |        |
|  |            | A-1047 A               |        |