

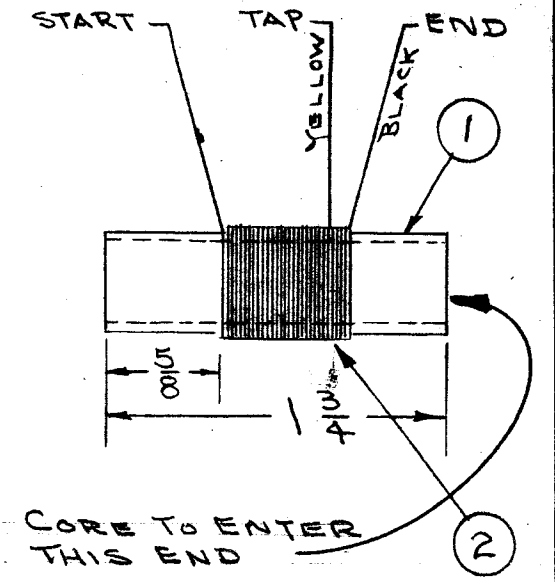
IF IT IS FOUND DESIRABLE TO CHANGE ANY TOLERANCE OR OTHER DETAIL SPECIFIED ON THIS DRAWING NOTIFY THE PURCHASER PROMPTLY.

MAXIMUM ALLOWABLE TOLERANCES HAVE BEEN DETERMINED AND DEVIATIONS WILL BE CAUSE FOR REJECTION. REMOVE ALL BURRS AND SHARP EDGES

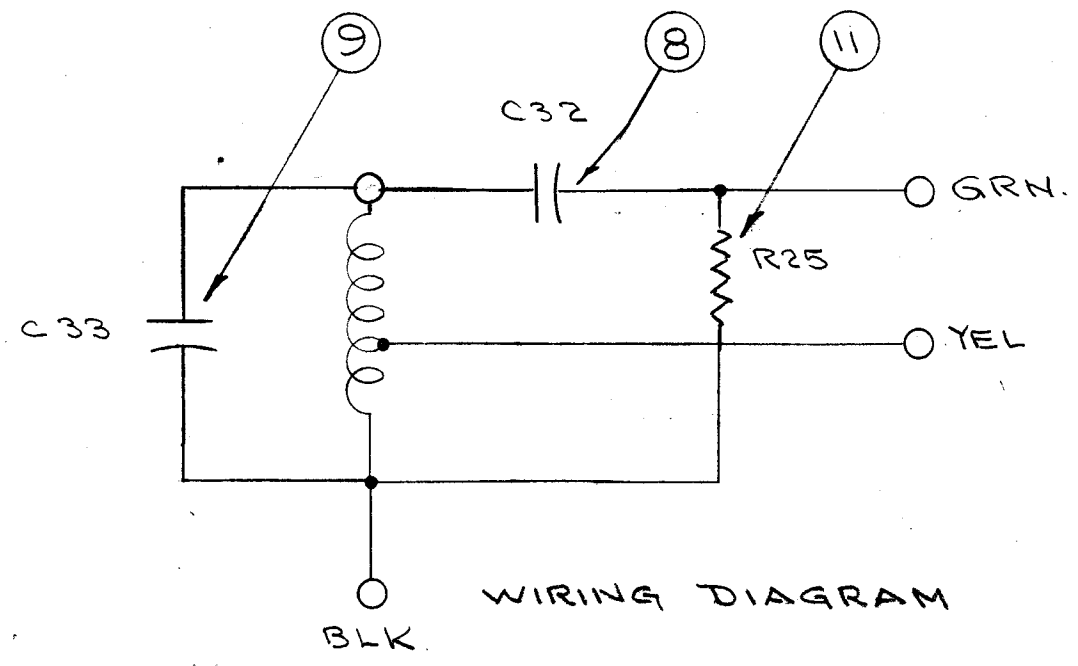
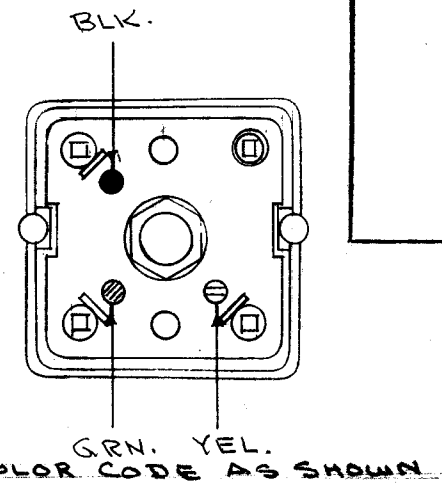
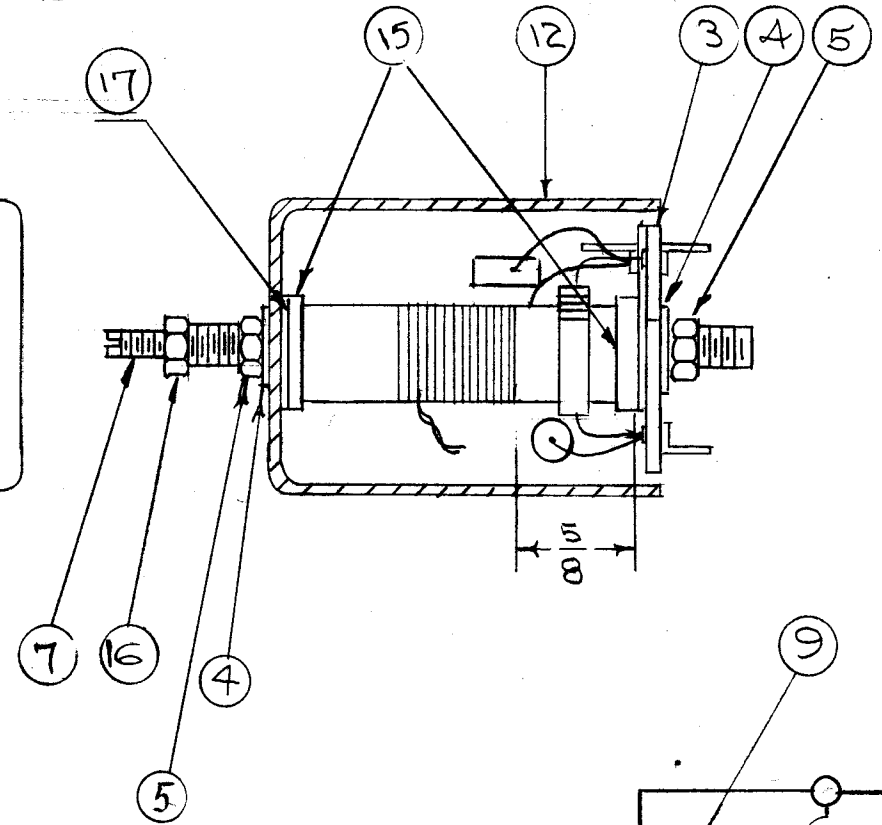
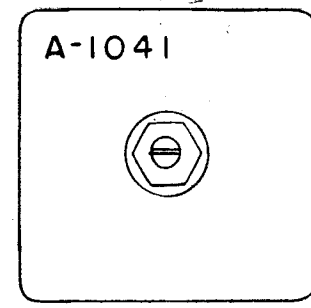
A-1041 K

WINDING DATA:
 SINGLE LAYER WINDING OF 36 TURNS TAPPED AT 32ND TURN.
 APPLY GL-103 TO ENDS.
 BAKE FOR 1/2 HOUR AT 215°F.
 APPLY COATING OF GL-102 (Q-MAX.)
 BAKE FOR 1/2 HOUR AT 215°F.
 LEADS TO BE APPROX. 3" LONG.

ELECTRICAL SPEC. (W/O CORE)
 $L = 7.2 \mu h$ (6.8 - 7.6 μh)
 $F = 7.9 mc$
 $Q = 110$ OR GREATER



STAMP TOP OF CAN - 1/8 HIGH BLACK GOTHIC



COIL WINDING DATA

REQ.	ITEM	PART NO.	DESCRIPTION	SYMBOL
1	17	FW 25 HBN	WASHER, FLAT	
1	16	NTH0632BN8	NUT, HEX.	
2	15	SM-110	BUSHING	
X	14	GL-103	DUCO CEMENT	
X	13	BS-100	SOLDER, SOFT	
1	12	A-1033-1	CAN ASSY.	
1	11	RC20GF153 J	RESISTOR, FIXED	R25
X	10	GL-102	Q, MAX	
1	9	CM15F221G03	CAPACITOR, "	C33
1	8	CC-101-4	" "	C32
1	7	CI-109-5	CORE	
	6	DELETED		
2	5	NT-102	NUT, HEX	
2	4	LWI25MRN	WASHER, LOCK	
1	3	A-942	TERM. BD. ASSY.	
X	2	WI-107-11	WIRE, MAGNET #30DSC	
1	1	CF-100	COIL FORM	

THE TECHNICAL MATERIEL CORP.
 MAMARONECK, NEW YORK
 COIL, RF, TUNED, 2ND CONVERTER &
 OSCILLATOR 3.5MC
 CDD. 6-22-55
 DRAWN: JAO
 ELEC. DES. APP. [Signature]
 MECH. DES. APP. [Signature]
 G.T.O.
 FINAL APPROVAL
 A-1041 K

ISSUE	ITEM	CHANGED FROM	DATE	CN. NO.	DRAFTS	CHECKER	ENG. APP.
K		IT.4 WAS LWI25LRC. IT.5 WAS CM20D221G. DELE. IT.6. IT.16 WAS NTH0632BN8. IT.17 WAS FW25LRC	9-26-66	16	B ₉₂	RME	[Signature]

TOLERANCES: DEC. DIM. ±, FRAC. DIM. ±, ANGULAR DIM. ±

SCALE: DRILL, PUNCH, COMMERCIAL STOCK SIZES AND MANUFACTURERS TOLERANCES ARE NOT INCLUDED.

1 GPR L19 6-22-55

REQ. PER UNIT MODEL PROJECT NO. SYMBOL NO. DATE

USED ON