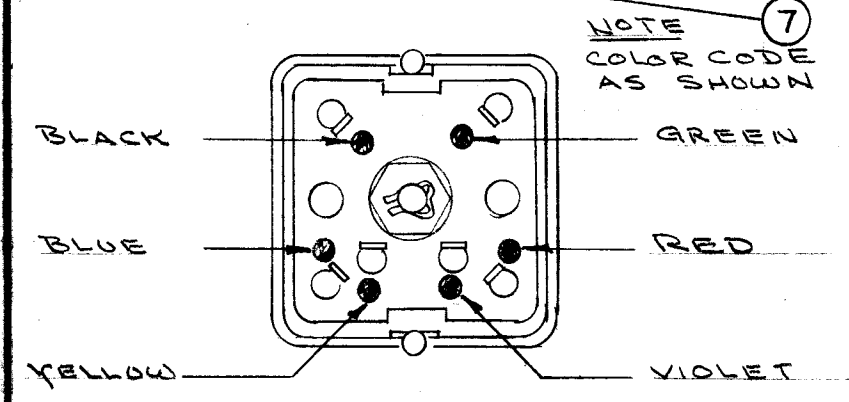
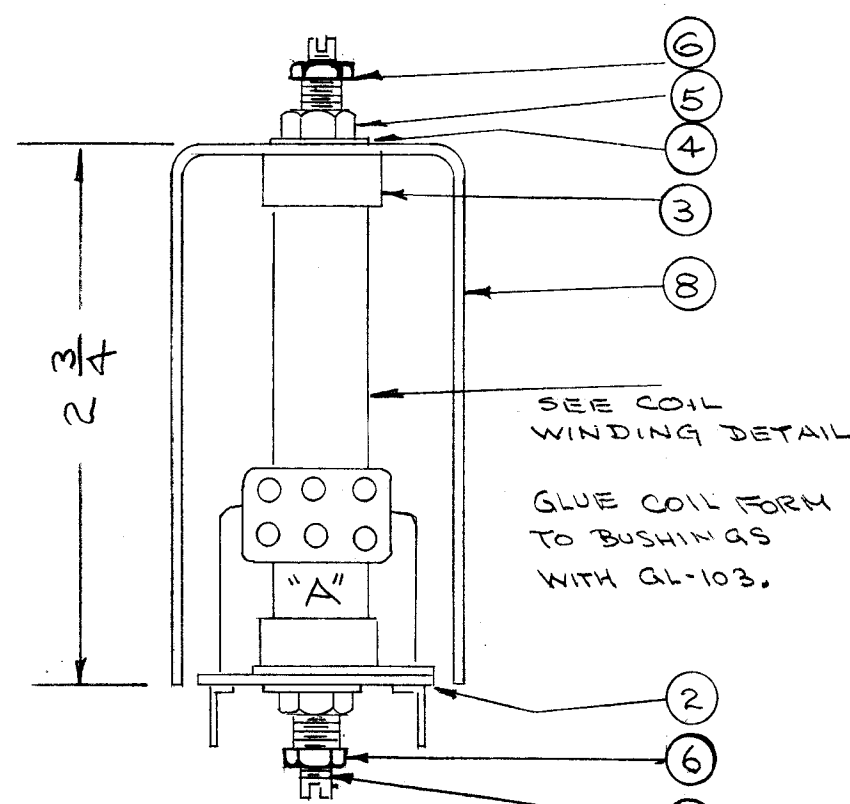


NOTE
STAMP TOP OF CAN
1/8 HIGH BLACK
GOTHK



ADD IT. 6 TO PICT. IT. 9 WAS CM20D20IG. IT. 6 WAS SPI02. IT. 4 WAS LWI25LRN	9-26-66	16892	R M E	<i>[Signature]</i>	<i>[Signature]</i>
ITEM #9 CM20D20IG WAS CM109D 2000G	11/12/58	522	JCB	<i>[Signature]</i>	<i>[Signature]</i>
COMPLETELY REVISED	8/3/56	3	JAN	<i>[Signature]</i>	<i>[Signature]</i>
1 SUPERSEDES IA-945					

ISSUE	ITEM	CHANGED FROM	DATE	CH. NO.	DRAFTS	CHECKER	ENG. APP.

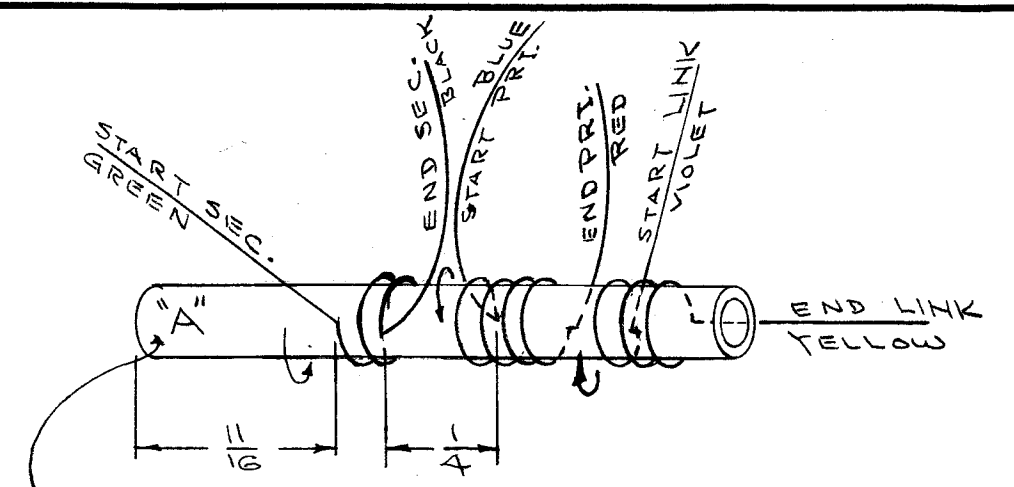
TOLERANCES: DEC. DIM. ±, FRAC. DIM. ±, ANGULAR DIM. ±

- WINDING**
- 2 CLOSE WOUND, SINGLE LAYER WINDINGS, OF ITEM 13 #30 DSC (WIRE, MAGNET). 32 TURNS IN EACH WINDING.
 - 2 TURNS OF ITEM 14 #32 DSC (WIRE, MAGNET), CLOSE WOUND, SINGLE LAYER, NEXT TO PRI.

- FABRICATION**
- 1 STAKE LEADS TO COIL FORM WITH GL-103.
 - 2 BAKE DRY FOR 1/2 HR AT 215° F.
 - 3 COAT COILS WITH GL-102
 - 4 BAKE FOR 1/2 HR. AT 215° F.

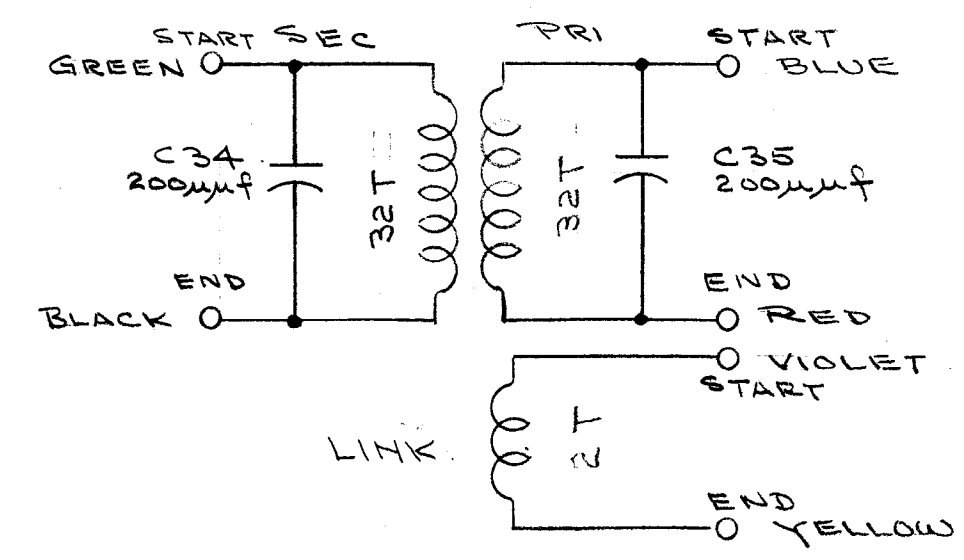
ELECTRICAL DATA (W/O CORE)

L PRI. & SEC.	F	Q
6.2 μh (5.9-6.5)	7.9 mc	7 110



NOTE - "A" TOWARD TERM. BD

WIRING DIAGRAM



X	4	WI-107-13	WIRE, MAGNET #32 DSC	
X	13	WI-107-11	" " #30 DSC	
X	12	GL-102	Q-MAX	
X	11	GL-103	CEMENT, DUCO	
X	10	BS-100	SOLDER, SOFT	
2	9	CM15F20IG03	CAPACITOR, FIXED	CP34
1	8	A-949	CAN, SUB-ASSY	CP34
2	7	CE-109-5	CORE	
2	6	NTH0632BNS	NUT, HEX.	
2	5	NT-102	NUT, HEX	
2	4	LWI25LRN	LOCK WASHER	
2	3	SM-110	BUSHING	
1	2	A-992	TERMINAL BD SUB ASSY	
1	1	CF-117-2.5	COIL FORM	

THE TECHNICAL MATERIEL CORP. MAMARONECK, NEW YORK			
SECOND CONVERTER ASSY			
T2 INPUT TRANSF GPR			
TYPE & TEMPER	HEAT TREAT. SPEC.	DRAWN	CHECKED
		<i>[Signature]</i>	<i>[Signature]</i>
FINISH & SPEC. NO.	ELEC. DES. APP.	MECH. DES. APP.	FINAL APPROVAL
	<i>[Signature]</i>		<i>[Signature]</i>

1	GPR-90	297	G-22-55
REQ. PER UNIT	MODEL	PROJECT NO.	ASS'Y. NO.
			DATE

USED ON

A-1040 E