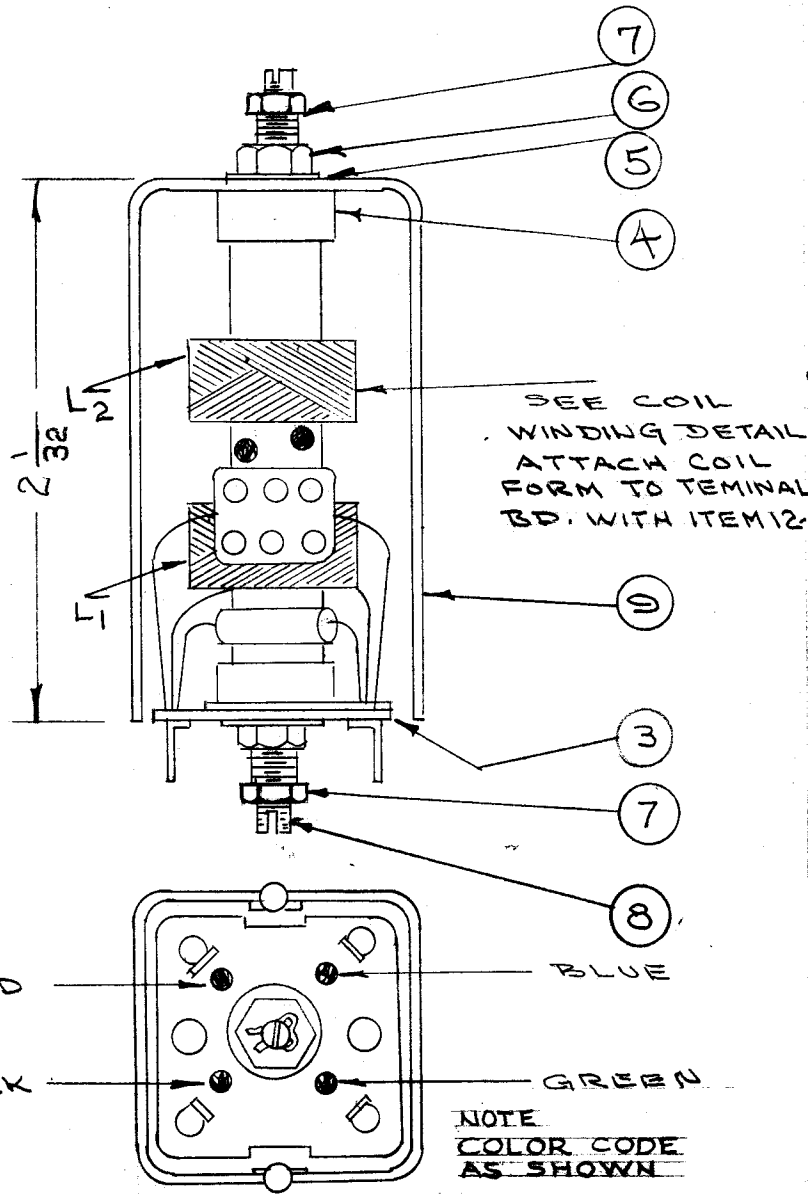
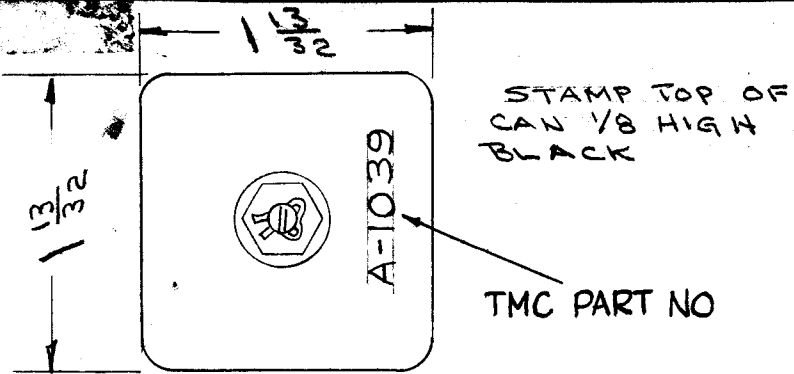


A-1039



WINDING MACHINE DATA

CAM GEAR 105
 DRIVER GEAR 69
 CAM 1/4

WINDING DATA

2 PL - 100 TURNS EACH PL.
 OF ITEM 2

FABRICATION

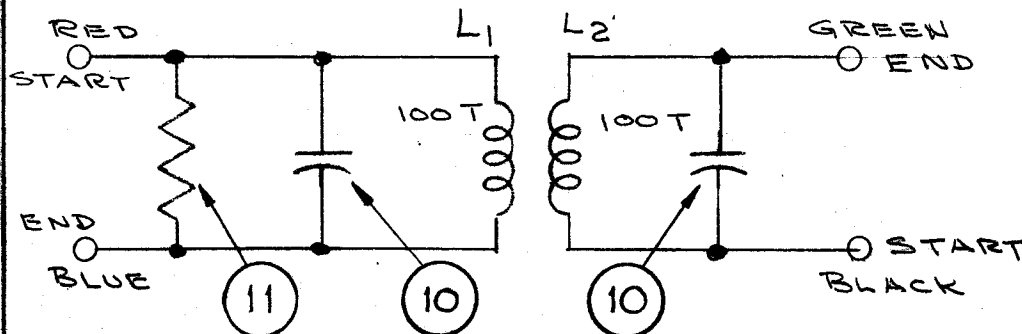
LEADS APPROX. 3" LONG
 BAKE DRY FOR 1/2 HOUR AT 215°F
 COAT COILS WITH Q-MAX (GL-102).
 BAKE FOR 1/2 HOUR AT 215°F.

ELECTRICAL TEST DATA (W/O CORE)

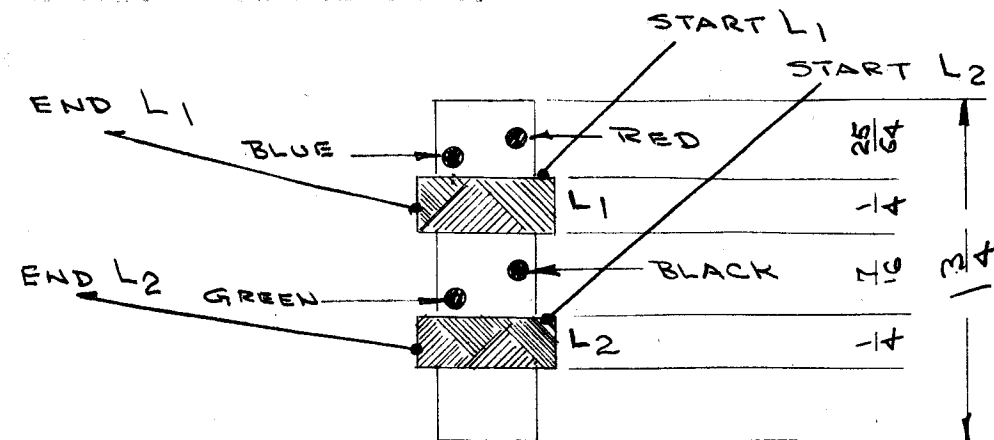
L	F	Q	R
95μh (90-100)	750KC	> 75	3.5Ω APPR.

NOTE
 COMPLETED ASSY. TO MEET
 TMC SPECIFICATION S-280

WIRING DIAGRAM



TMC PART NO	SYMBOL	ITEM 11	ITEM 10	UNITS USED ON
A-1039	T-6	R-41	C49, C51	GPR-90, GPR-90RX, GPR-90RXD
A-1039-	T-7	R-48	C55, C58	GPR-90, GPR-90RX, GPR-90RXD
A-1039-	T-8	R-56	C62, C64	GPR-90, GPR-90RX, RXD, GPR-91RXD



X 14	GL-102	Q-MAX	
X 13	BS-100	SOLDER, SOFT	
X 12	GL-103	DUCO CEMENT	
1 11	RC20GF5637	RESISTOR, FIXED	
2 10	CM20F10ZG03	CAPACITOR, FIXED	
1 9	A-1033-1	CAN, SUB-ASSY	
2 8	CI-109-11	CORE	
2 7	NTH0632BNS	NUT, HEX	
2 6	NT-102	NUT, HEX	
2 5	LWI25LRN	LOCKWASHER	
2 4	SM-110	BUSHING	
1 3	A977	TERMINAL RD. SUB-ASSY	
X 2	WI-104-5413CQS	WIRE, LITZ	
1 1	CF-100	COIL FORM	
REQ. ITEM	PART NO.	DESCRIPTION	SYMBOL

STOCK SIZE

THE TECHNICAL MATERIEL CORP.
 MAMARONEOK, NEW YORK

I.F. TRANSFORMER ASSY, 455 KC

MATERIAL

TYPE & TREAT. SPEC.	DRAWN	CHECKED	FINAL APPROVAL
	P.L.K.		A.J.J.
			A-1039

M	ADD IT. 7 TO PICT. 9 - IT. 7 WAS SPI02. IT. 10 WAS CM20D10Z6 IT. 11 TOL. WAS 'K'	26-16	6092	R M E	CB	
L	IT. 3 WAS A1004	4-14-65	13836	AK	JCP	
K	MODEL#GPR91RXD ADDED	8-19-63	9771	AK	JMS	
ISSUE ITEM	CHANGED FROM	DATE	CH. NO.	DRAFTS	CHECKER	ENG. APP.

DEC. DIM. ±	FRAC. DIM. ±	ANGULAR DIM. ±	TOLERANCES	SCALE:	MAXIMUM ALLOWABLE TOLERANCES HAVE BEEN DETERMINED AND ANY DEVIATIONS WILL BE CAUSE FOR REJECTION. REMOVE ALL BURRS AND SHARP EDGES
	1/64				

1	GPR91RXD			8-2-63
3	GPR90RXD			3-3-60
3	GPR90RX			3-3-60
3	GPR90	297		2-7-66
REQ. PER UNIT	MODEL	PROJECT NO.	ASS'Y. NO.	DATE
				USED ON