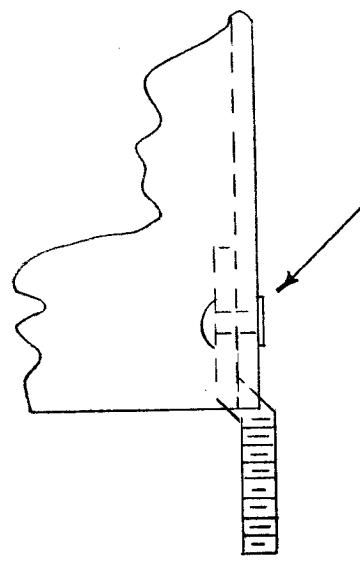
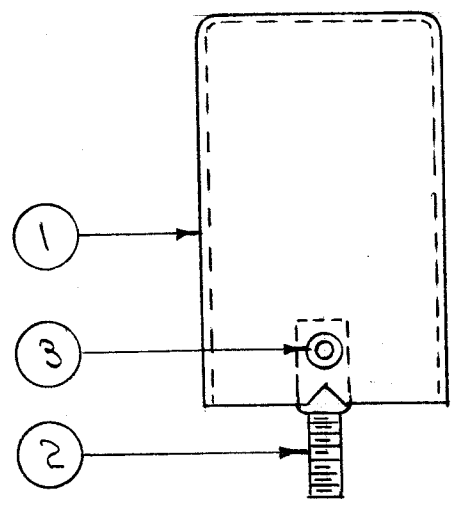
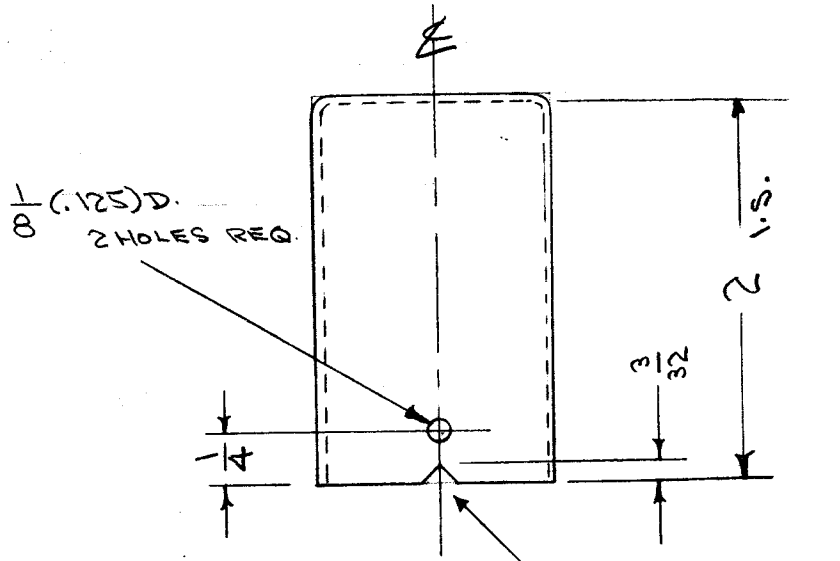


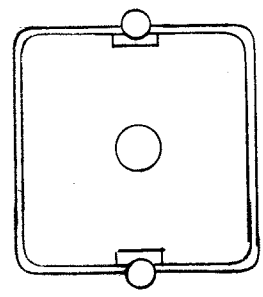
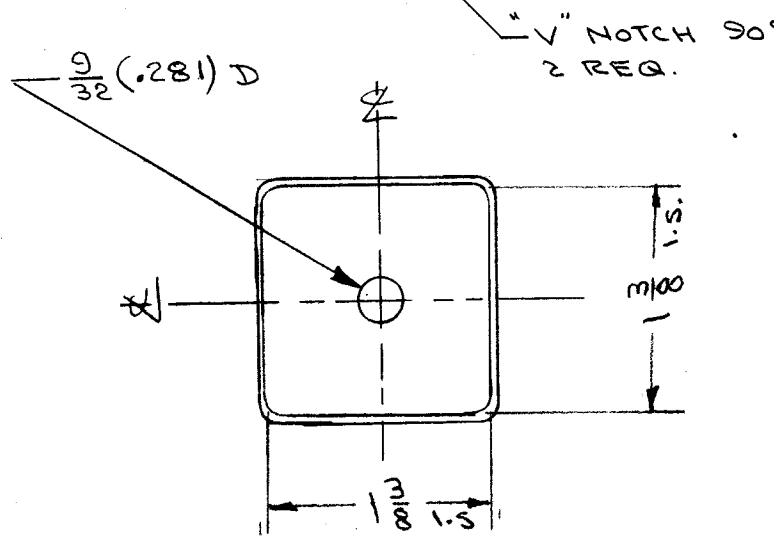
IF IT IS FOUND DESIRABLE TO CHANGE ANY TOLERANCE OR OTHER DETAIL SPECIFIED ON THIS DRAWING NOTIFY THE PURCHASER PROMPTLY.

MAXIMUM ALLOWABLE TOLERANCES HAVE BEEN DETERMINED AND DEVIATIONS WILL BE CAUSE FOR REJECTION. REMOVE ALL BURRS AND SHARP EDGES

A-1033 E



MODEL	USED ON	DESCRIPTION
GPR	3 REQ A-1039 1 REQ A-1041	A-1033-1 (AS SHOWN) A-1033-2 (W/O HOLE)



MODIFY BX-102-8 AS ABOVE

REQ.	ITEM	PART NO.	DESCRIPTION	SYMBOL
2	3	EY-100-1	EYELET	
2	2	SC-107-1	SPADE BOLT	
1	1	BX-102-8	CAN, MODIFIED AS SHOWN	
BX-102-8			THE TECHNICAL MATERIEL CORP., MAMARONECK, NEW YORK	
STOCK SIZE			CAN ASSY, (USE CHART)	
MATERIAL		WEIGHT PER PC.		
TYPE & TEMPER			CDR. 6-13-55	##
HEAT TREAT. SPEC.			DRAWN	ELEC. DES. APP. MECH. DES. APP.
			CHECKED	FINAL APPROVAL

ISSUE	ITEM	CHANGED FROM	DATE	CN. NO.	DRAFTS	CHECKER	ENG. APP.
E	1	A-1041 Added To A-1033-1	10/6/55	5	JAW	P.Z.X	A.J.J.
D	1	ITEM 1 WAS MS-654	8/18/56	4	JAW	P.Z.X	A.J.J.
C	1	2 1/16 WAS 2	6/5/56	3	JAW	P.Z.X	A.J.J.
B	1	9/32 D WAS 1/4 D	7/19/55	2	JAW	P.Z.X	A.J.J.
A	1	QUAN. WAS 1 REQ	6/19/55	1	C.D.D.	JAW	A.J.J.

TOLERANCES		SCALE:	
ALL OTHERS	DEC. DIM. ± FRAC. DIM. ± ANGULAR DIM. ±	DRILL, PUNCH, COMMERCIAL STOCK SIZES AND MANUFACTURERS TOLERANCES ARE NOT INCLUDED.	SEE CHART

REQ. PER UNIT	MODEL	PROJECT NO.	ASS'Y. NO.	DATE
	GPR			6-17-55

USED ON

A-1033