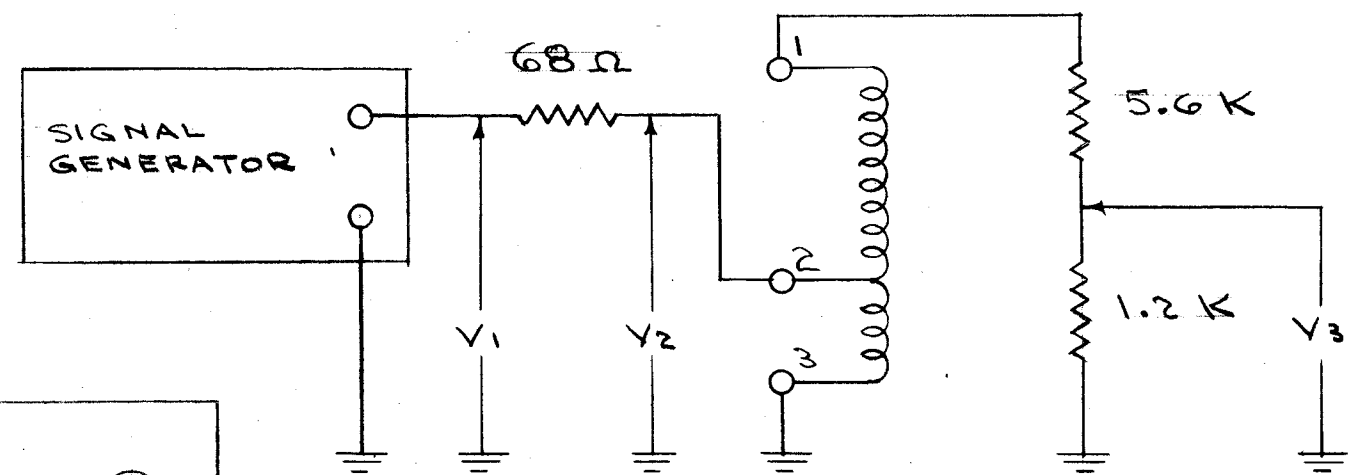
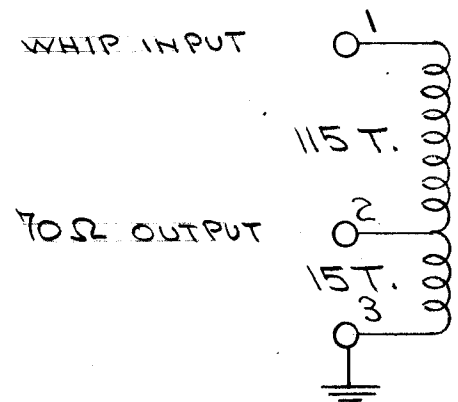
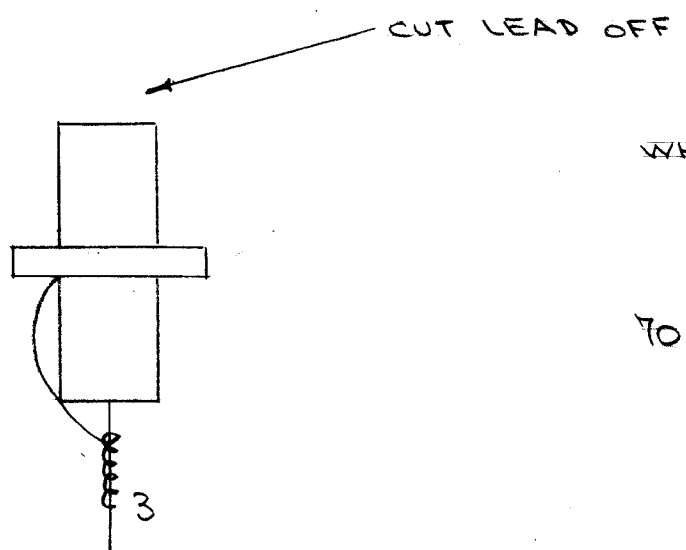


IF IT IS FOUND DESIRABLE TO CHANGE ANY TOLERANCE OR OTHER DETAIL SPECIFIED ON THIS DRAWING NOTIFY THE PURCHASER PROMPTLY.

MAXIMUM ALLOWABLE TOLERANCES HAVE BEEN DETERMINED AND DEVIATIONS WILL BE CAUSE FOR REJECTION. REMOVE ALL BURRS AND SHARP EDGES

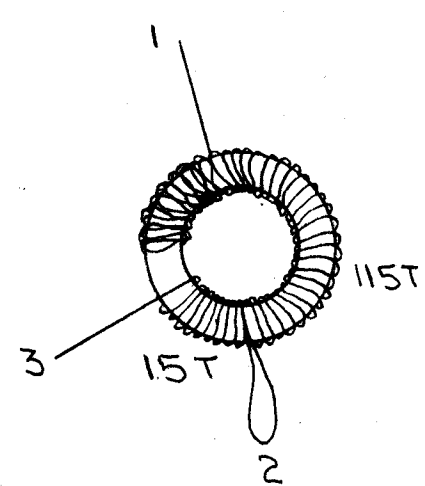
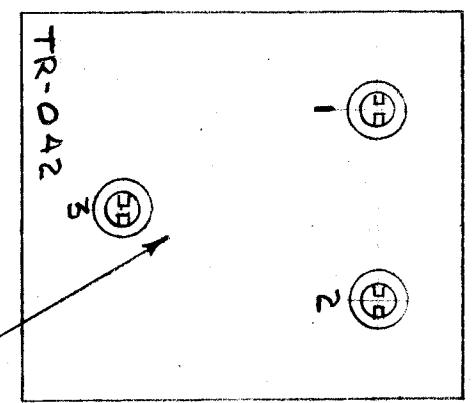
A-1011 C



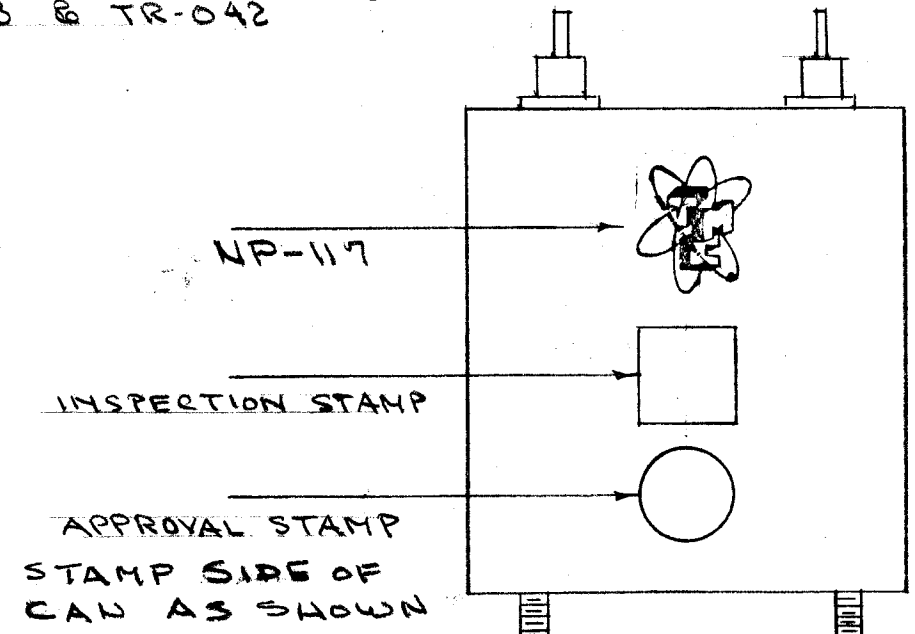
f. Kc.	R.F. VOLTS		
	V <sub>1</sub>	V <sub>2</sub> ± 10%	V <sub>3</sub> ± 10%
200	1.0	.6	.86
400	1.0	.57	.82
800	1.0	.48	.82

H.P. YTM.

METAL STAMP BEFORE PAINTING.  
 1/8 BLACK STAMP AFTER PAINTING  
 1, 2, 3 & TR-042



STARTING AT 3, WIND ON 15 TURNS, TAP AT 2. WIND ON 100 TURNS. THEN DOUBLE BACK FOR 15 TURNS ENDING AT 1.



**NOT TO BE RELEASED W/O AUTHORIZATION**  
 AUTH. BY: \_\_\_\_\_  
 DATE: \_\_\_\_\_

REQ.	ITEM	PART NO.	DESCRIPTION	SYMBOL
1	7	NP-117	T.M.C. INSIGNIA	
1	6	CN-100-3	CAPACITOR, FIXED	
X	5	GL-106	POTTING COMPOUND	
X	4	BS-100	SOLDER, SOFT	
X	3	WI-102-11	WIRE	
1	2	CI-104	CORE	
1	1	BX-120	CASE	
			THE TECHNICAL MATERIEL CORP. MAMARONECK, NEW YORK	
			TRANSFORMER	
			TR-042	
			COND. 8-10-54	AMP
			DRAWN	ELEC. DES. APP. MECH. DEP.
			FADE	AMP
			CHECKED	FINAL APPROVAL
			A-1011	

ISSUE	ITEM	CHANGED FROM	DATE	CN. NO.	DRAFTS	CHECKER	ENG. APP.
C	-	± 10% ADDED (V2, V3)	11-22-55	15152	R.V.	RC	
B	1	GL-106 WAS GL-100	2-18-57	2	SC.	10	
A	1	WAS DWG. NO. TR-042	5-10-55	1	CS	AMP	
A	1	ITEM 7 WAS NP-139	3-8-55	1	P.D.	AMP	

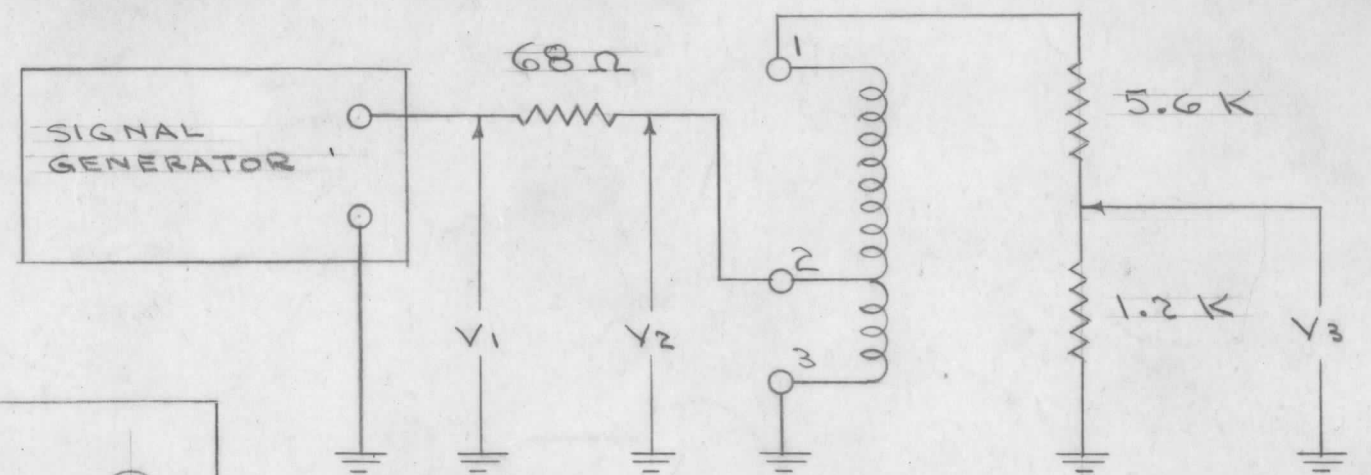
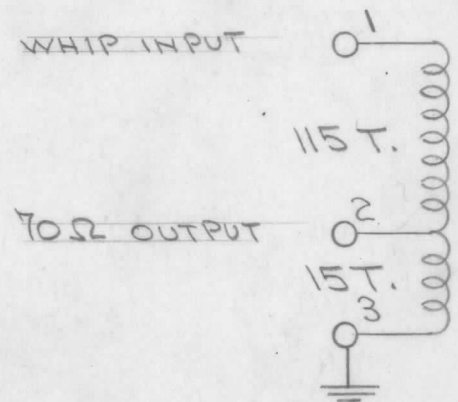
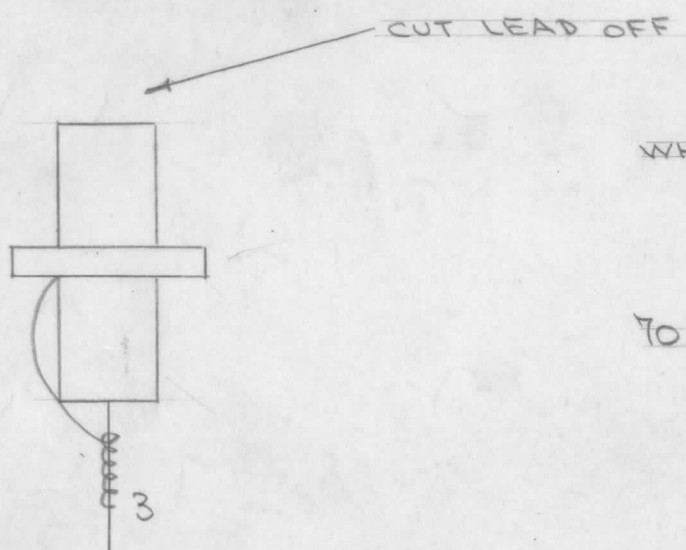
TOLERANCES		SCALE:
DEC. DIM. ±		DRILL, PUNCH, COMMERCIAL STOCK
FRAC. DIM. ±		SIZES AND MANUFACTURERS
ANGULAR DIM. ±		TOLERANCES ARE NOT INCLUDED.

QTY	UNIT	MODEL	PROJECT NO.	ASS'Y. NO.	DATE
1	VRM				5-26-58

IF IT IS FOUND DESIRABLE TO CHANGE ANY TOLERANCE OR OTHER DETAIL SPECIFIED ON THIS DRAWING NOTIFY THE PURCHASER PROMPTLY.

MAXIMUM ALLOWABLE TOLERANCES HAVE BEEN DETERMINED AND DEVIATIONS WILL BE CAUSE FOR REJECTION. REMOVE ALL BURRS AND SHARP EDGES

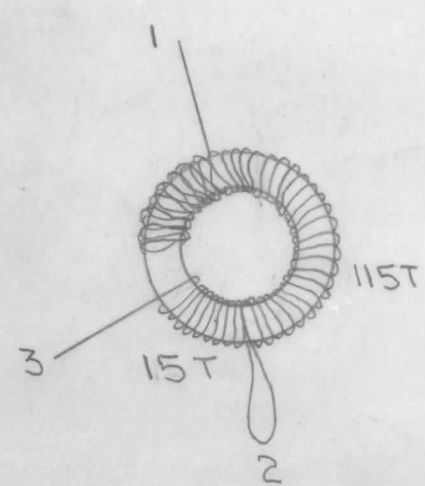
A-10112 C



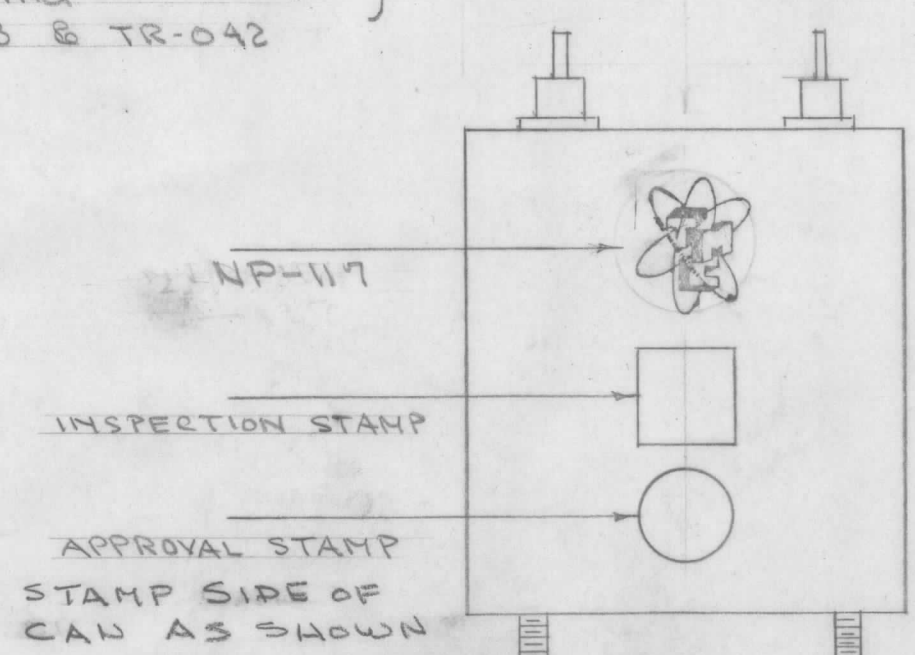
f. Kc.	R.F. VOLTS		
	V <sub>1</sub>	V <sub>2</sub> ± 10%	V <sub>3</sub> ± 10%
200	1.0	.6	.86
400	1.0	.57	.82
800	1.0	.48	.82

H.P. YTM.

METAL STAMP BEFORE PAINTING.  
 1/8 BLACK STAMP AFTER PAINTING  
 1, 2, 3 & TR-042



STARTING AT 3, WIND ON 15 TURNS, TAP AT 2. WIND ON 100 TURNS. THEN DOUBLE BACK FOR 15 TURNS ENDING AT 1.



REQ.	ITEM	PART NO.	DESCRIPTION	SYMBOL
1	7	NP-117	T.M.C. IN SIGNIA	
1	6	CN-100-3	CAPACITOR, FIXED	
X	5	GL-106	POTTING COMPOUND	
X	4	BS-100	SOLDER, SOFT	
X	3	WI-102-11	WIRE	
1	2	CI-104	CORE	
1	1	BX-120	CASE	

**NOT TO BE RELEASED W/O AUTHORIZATION**  
 AUTH. BY .....  
 DATE: .....

ISSUE	ITEM	CHANGED FROM	DATE	CN. NO.	DRAFTS	CHECKER	ENG. APP.
C	-	± 10% ADDED (V2, V3)	11-22-65	15152	R.V.	9C15	
B	1	GL-106 WAS GL-100	2-18-57	2	SC.	10	
-	1	WAS DWG. NO. TR-042	5/10/55	-	CS	10	
A	1	ITEM 7 WAS NP-139	3-8-55	1	P.B.	10	

TOLERANCES		SCALE:
ALL	DEC. DIM. ± FRAC. DIM. ± ANGULAR DIM. ±	DRILL, PUNCH, COMMERCIAL STOCK SIZES AND MANUFACTURERS TOLERANCES ARE NOT INCLUDED.

REF. UNIT	MODEL	PROJECT NO.	ASS'Y. NO.	DATE
1	VRA			5-26-58

THE TECHNICAL MATERIEL CORP. MAMARONECK, NEW YORK			
TRANSFORMER			
TR-042			
REQ.	ITEM	PART NO.	DESCRIPTION
3-11			SMOOTH GRAY ENAMEL
HEAT TREAT. SPEC.	FINISH & SPEC. NO.		
DATE	CHECKED	ELEC. DES. APP.	MECH. DES. APP.
DRAWN		FINAL APPROVAL	
A-10112			