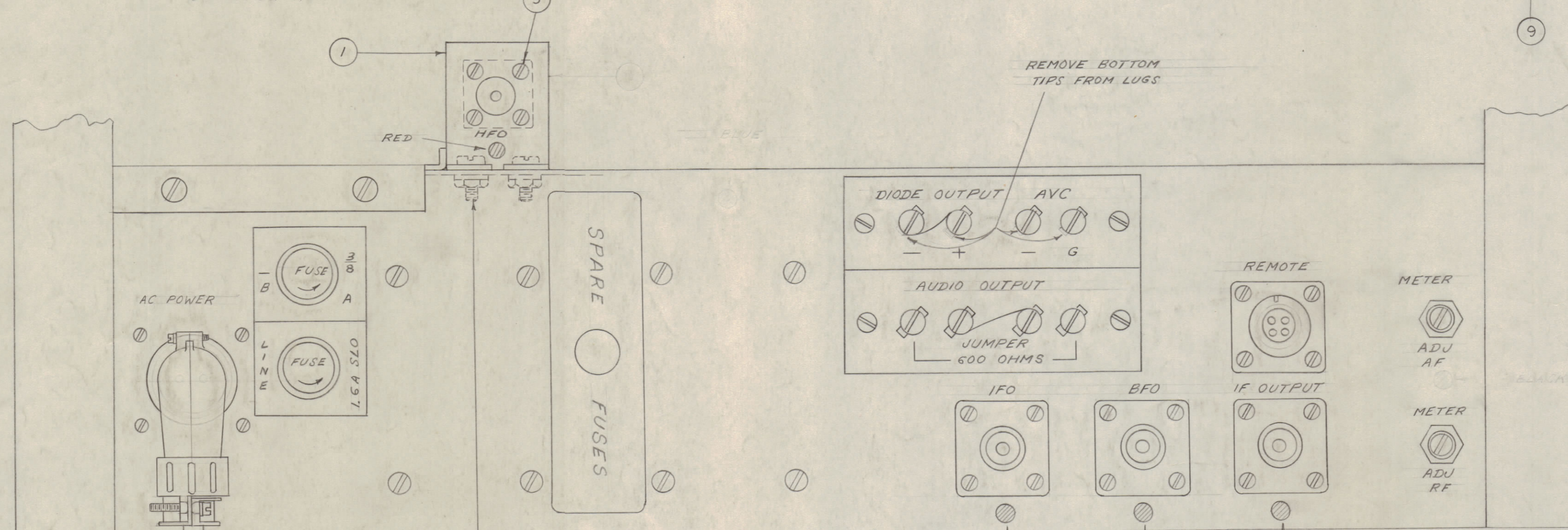
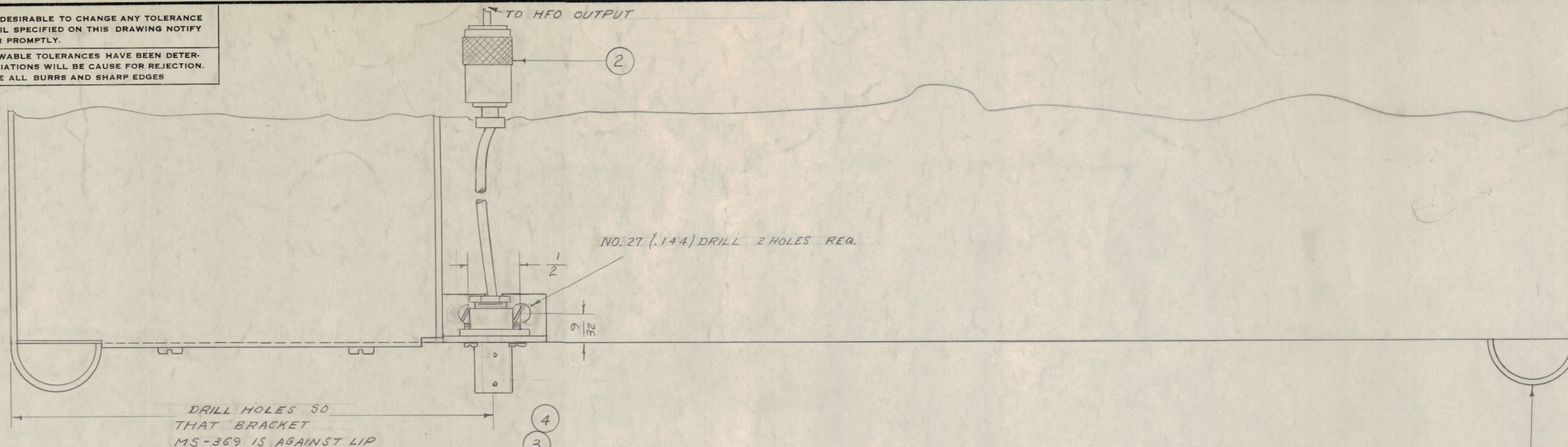
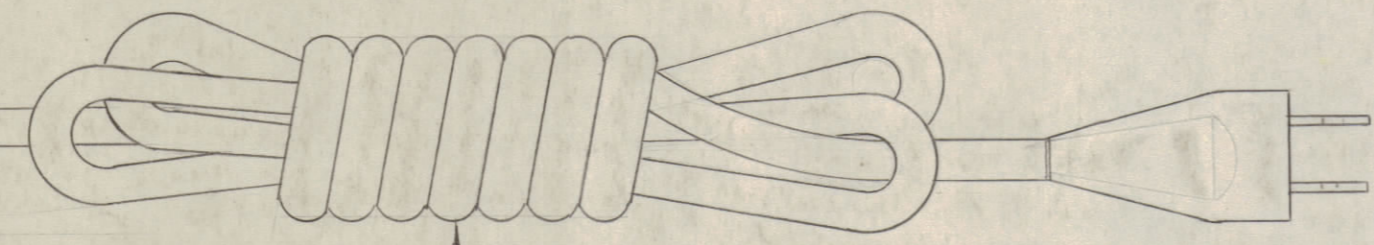


IF IT IS FOUND DESIRABLE TO CHANGE ANY TOLERANCE OR OTHER DETAIL SPECIFIED ON THIS DRAWING NOTIFY THE PURCHASER PROMPTLY.
 MAXIMUM ALLOWABLE TOLERANCES HAVE BEEN DETERMINED AND DEVIATIONS WILL BE CAUSE FOR REJECTION. REMOVE ALL BURRS AND SHARP EDGES



A-1003 A

NOTE:
 STAMP HFO WITH RED DOT
 STAMP IFO WITH BLUE DOT
 STAMP BFO WITH BLACK DOT
 STAMP IF OUTPUT WITH WHITE DOT



1	11	AN3108B-14-2P	ANGLE PLUG	
1	10	AN3057-6	CLAMP, CABLE	
1	9	SP-600 JX17	HAMMARLUND RECEIVER	
1	8	CA-243	POWER, CABLE	
2	7	NTH0632BC8	NUT, HEX	
2	6	LWS06MRC	LOCKWASHER, SPLIT	
2	5	SCBS0632BC8	SCREW, MACHINE	
4	4	SCBS0356BC3	SCREW, MACHINE	
4	3	LWS03MRC	LOCKWASHER	
1	2	CA-242	HFO CABLE	
1	1	MS-369	BRACKET	

REF. TMC SPECIFICATION S-256

ITEMS 10 & 11 SHIPPED AS LOOSE ITEMS

A	2	ITEM 11 WAS PL-126-1	4264	1	AD	JAS	
	1	ITEM 10 WAS CU-120-3					
ISSUE	ITEM	CHANGED FROM	DATE	CN. NO.	DRAFTS	CHECKER	ENG. APP.
TOLERANCES			SCALE:				
ALL OTHERS	DEC. DIM. ±	DRILL, PUNCH, COMMERCIAL STOCK SIZES AND MANUFACTURERS TOLERANCES ARE NOT INCLUDED.					
	FRAC. DIM. ±						
	ANGULAR DIM. ±						

DMK-5			4-22-55
MODEL	PROJECT NO.	ASSY. NO.	DATE
USED ON			

REQ.	ITEM	PART NO.	DESCRIPTION	SYMBOL
THE TECHNICAL MATERIEL CORP.				
MAMARONECK, NEW YORK				
REAR PANEL				
ASSEMBLY DMK-5				
STOCK SIZE				
MATERIAL			WEIGHT PER PC.	
TYPE & TEMPER			10 4-22-55	
HEAT TREAT. SPEC.			DRAWN ELEC. DES. APP. MECH. DES. APP.	
FINISH & SPEC. NO.			CHECKED FINAL APPROVAL	
			A-1003 A	