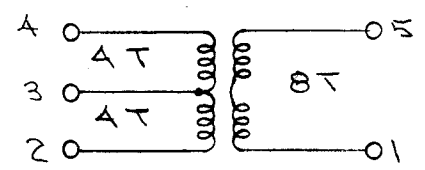
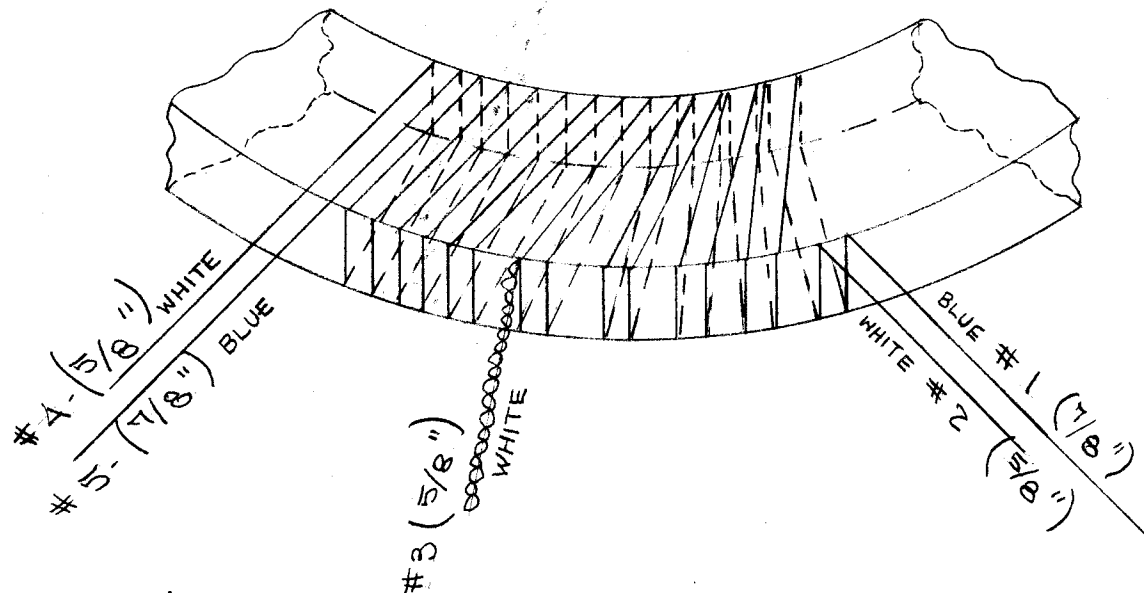


IF IT IS FOUND DESIRABLE TO CHANGE ANY TOLERANCE OR OTHER DETAIL SPECIFIED ON THIS DRAWING NOTIFY THE PURCHASER PROMPTLY.

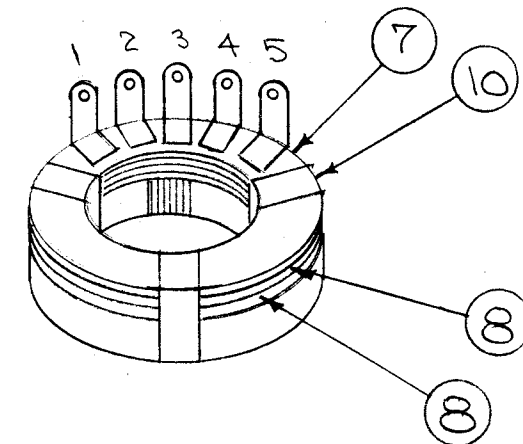
MAXIMUM ALLOWABLE TOLERANCES HAVE BEEN DETERMINED AND DEVIATIONS WILL BE CAUSE FOR REJECTION. REMOVE ALL BURRS AND SHARP EDGES

WHITE & BLUE WIRES ARE STARTED TOGETHER, AT #4 & #5.  
WIND 4 TURNS AND BRING OUT TAP IN WHITE WIRE TO POINT #3.  
CONTINUE WINDING BOTH WIRES FOR 4 MORE TURNS, END AT POINTS #1 & #2.

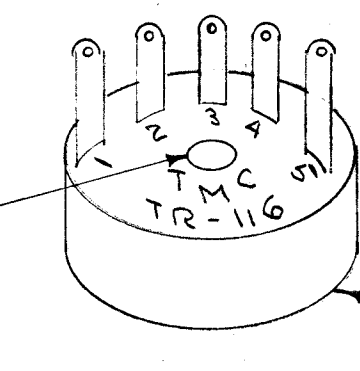
100-1-A



INTERWINDING TURNS  
CONNECTIONS  
3-2 70Ω BAL-UNBAL INPUT  
4-2 300Ω " " "  
1-5 300Ω UNBAL OUTPUT  
FREQ. RANGE 2-32 MC.

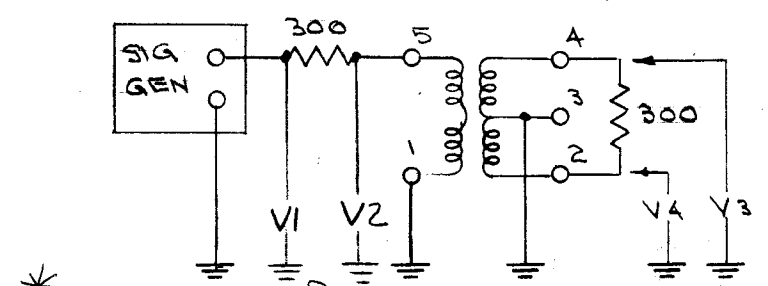
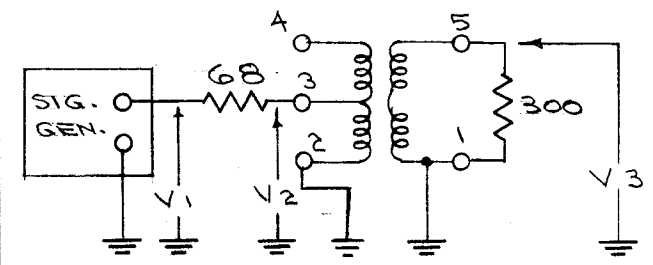


USE ONE OF ITEM 8 FLAT, FOLD OTHER IN HALF & PLACE AS SHOWN TO TAKE UP SPACE OF WIRES & TERM. CRIMP ON OTHER SIDE OF CORE



STAMP AS SHOWN BLACK GOTHIC

5/32 (.156) D.



\*TEST NO. 1

| f  | V1  | V2  | V3  |
|----|-----|-----|-----|
| 2  | 1.0 | .42 | .86 |
| 8  | 1.0 | .42 | .86 |
| 30 | 1.0 | .42 | .84 |

\*TEST NO. 2

| f  | V1  | V2  | V3 | V4 |
|----|-----|-----|----|----|
| 2  | 1.0 | .42 | .2 | .2 |
| 8  | 1.0 | .42 | .2 | .2 |
| 30 | 1.0 | .42 | .2 | .2 |

| ISSUE | ITEM | CHANGED FROM               | DATE     | CN. NO. | DRAFTS | CHECKER | ENG. APP. |
|-------|------|----------------------------|----------|---------|--------|---------|-----------|
| J     |      | TEST 1 & 2 UPDATED * ADDED | 1/29/67  | 18637   |        |         |           |
| H     | 1    | IT. 2 & 5 REVERSED         | 2-4-66   | CC      |        |         |           |
| G     | 2    | TERM 1 & 2 GND ADDED       | 9/65     | A201    |        |         |           |
|       | 1    | V1, V2 RELOCATED           |          |         |        |         |           |
|       | 3    | ITEM 7 WAS A-1064          |          |         |        |         |           |
| F     | 2    | ITEM 5 WAS WI-102-30-99    | 4/5/57   | 6       | 16     |         |           |
|       | 1    | ITEM 2 WAS WI-102-30-66    |          |         |        |         |           |
| E     | 1    | WIRING DATA REVISED        | 12-28-55 | 5       | 13     |         |           |
| D     | 1    | ITEMS 5 & 9 DELETED        | 3/1/55   | 4       | COO    |         |           |
| C     | 2    | ITEM 1 WAS IM-155-3        | 7/4/55   | 3       | COO    |         |           |
|       | 1    | " 5 " TE-151               |          |         |        |         |           |
| B     | 2    | ITEMS 7-8-9-10 ADDED       | 7/2/55   | 2       | COO    |         |           |
|       | 1    | ITEM 5 WAS TE-125          |          |         |        |         |           |

\* ALL READINGS EXCEPT V1 ± 10%

**NOT TO BE RELEASED W/O AUTHORIZATION**  
AUTH. BY: \_\_\_\_\_  
DATE: \_\_\_\_\_

|   |    |              |                   |       |
|---|----|--------------|-------------------|-------|
| X | 10 | TA-100-1     | TAPE              |       |
| X | 9  |              | DELETED           |       |
| 2 | 8  | IM-155       | INSULATOR         |       |
| 1 | 7  | A-1327-12345 | " ASSY.           |       |
| X | 6  | BS-100       | SOLDER, SOFT      |       |
| X | 5  | WI-102-9-6   | WIRE              | WHITE |
| X | 4  | GL-106       | COMPOUND, PLASTIC |       |
| X | 3  | GL-102       | Q-MAX A-27        |       |
| X | 2  | WI-102-9-9   | WIRE              | BLUE  |
| 1 | 1  | CI-104       | CORE              |       |

| REQ. ITEM                           | PART NO. | DESCRIPTION | SYMBOL |
|-------------------------------------|----------|-------------|--------|
| <b>THE TECHNICAL MATERIEL CORP.</b> |          |             |        |
| <b>MAMARONECK, NEW YORK</b>         |          |             |        |
| <b>ANTENNA TRANSFORMER</b>          |          |             |        |
| MATERIAL                            |          | TR-116      | GPR    |
| WEIGHT PER PC.                      |          |             |        |
| TYPE & TEMPER                       |          | CDP 7-28-55 |        |
| HEAT TREAT. SPEC.                   |          |             |        |
| FINISH & SPEC. NO.                  |          |             |        |

| TOLERANCES     | SCALE:   |
|----------------|----------|
| ALL OTHERS     | 1 GPR-40 |
| DEC. DIM. ±    | TR-116   |
| FRAC. DIM. ±   |          |
| ANGULAR DIM. ± |          |

| REQ. PER UNIT | MODEL  | PROJECT NO. | ASSY. NO. | DATE    |
|---------------|--------|-------------|-----------|---------|
| 1             | TR-116 |             |           | 5-12-58 |
|               |        |             |           | 7-28-55 |

USED ON