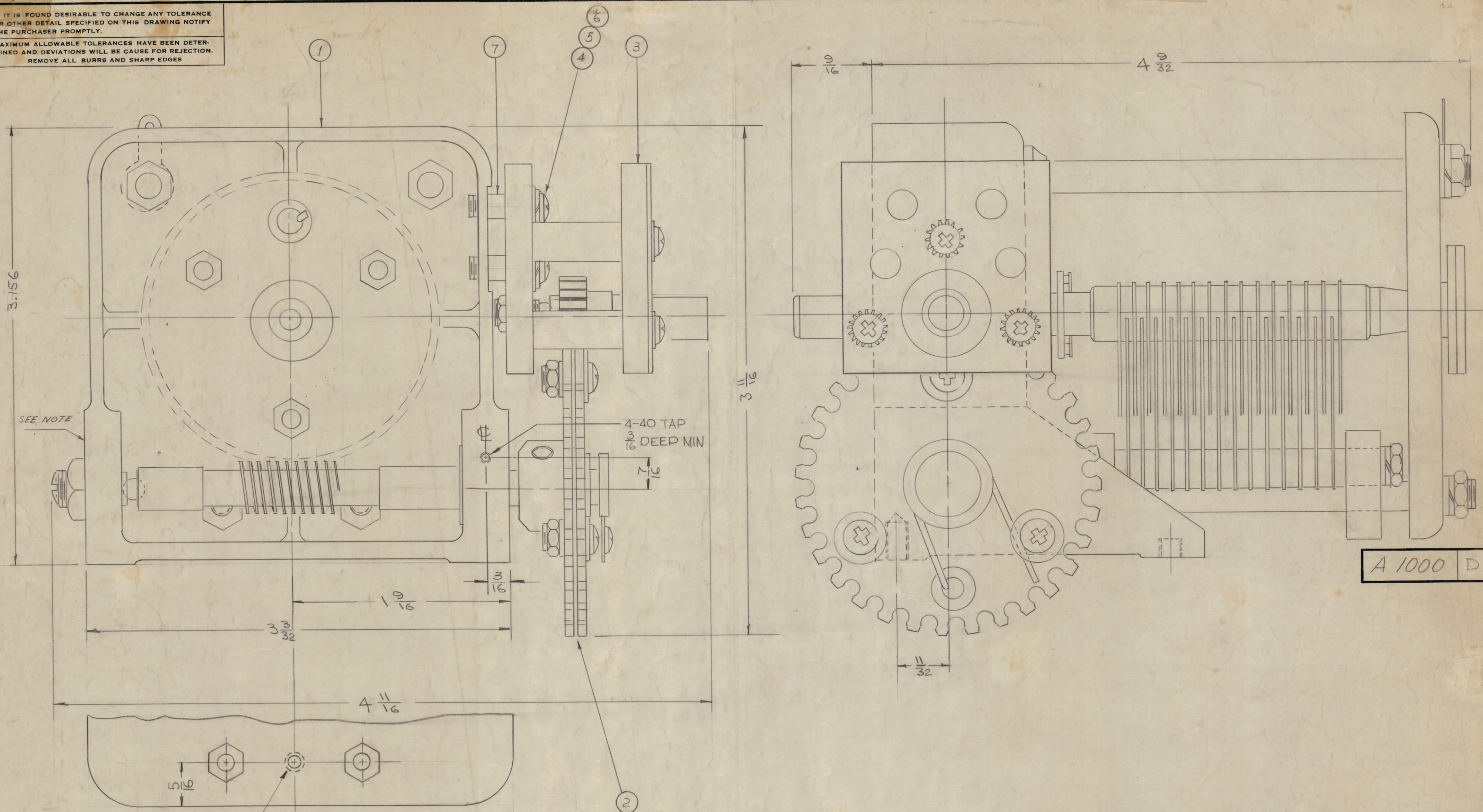


IF IT IS FOUND DESIRABLE TO CHANGE ANY TOLERANCE OR OTHER DETAIL SPECIFIED ON THIS DRAWING NOTIFY THE PURCHASER PROMPTLY.

MAXIMUM ALLOWABLE TOLERANCES HAVE BEEN DETERMINED AND DEVIATIONS WILL BE CAUSE FOR REJECTION. REMOVE ALL BURRS AND SHARP EDGES



REF: SEE ML-A1000

4	7	TE-117-22	SPACER	
4	6	FW04HBN	WASHER, FLAT	
4	5	LW504MRN	WASHER, LOCK, SPLIT	
4	4	SCBP0440BN9	SCREW, MACHINE	
	3	*	PINION GEAR ASSY	
	2	*	SPLIT SPUR GEAR ASSY	
	1	*	CAPACITOR VARIABLE	

* REF ONLY

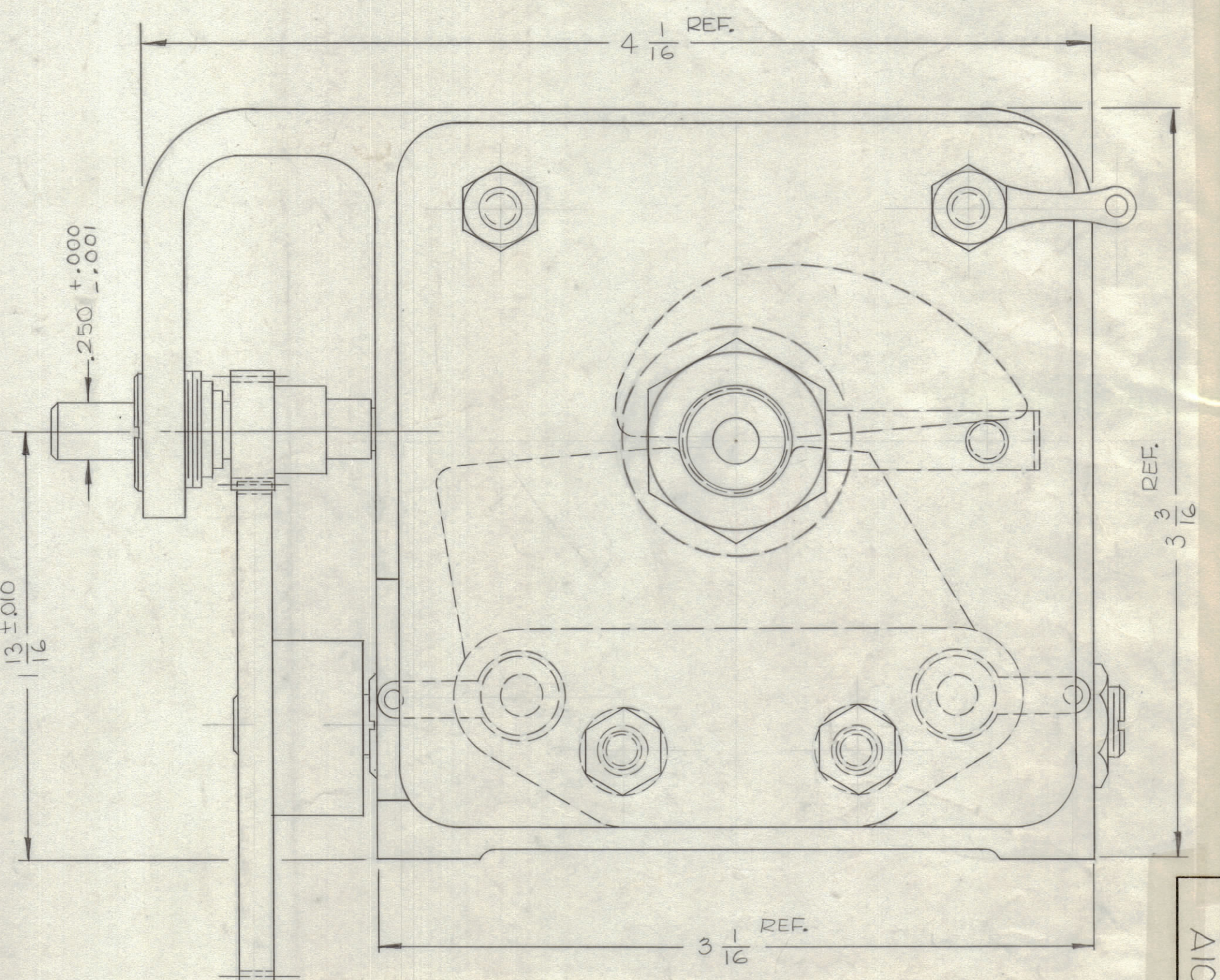
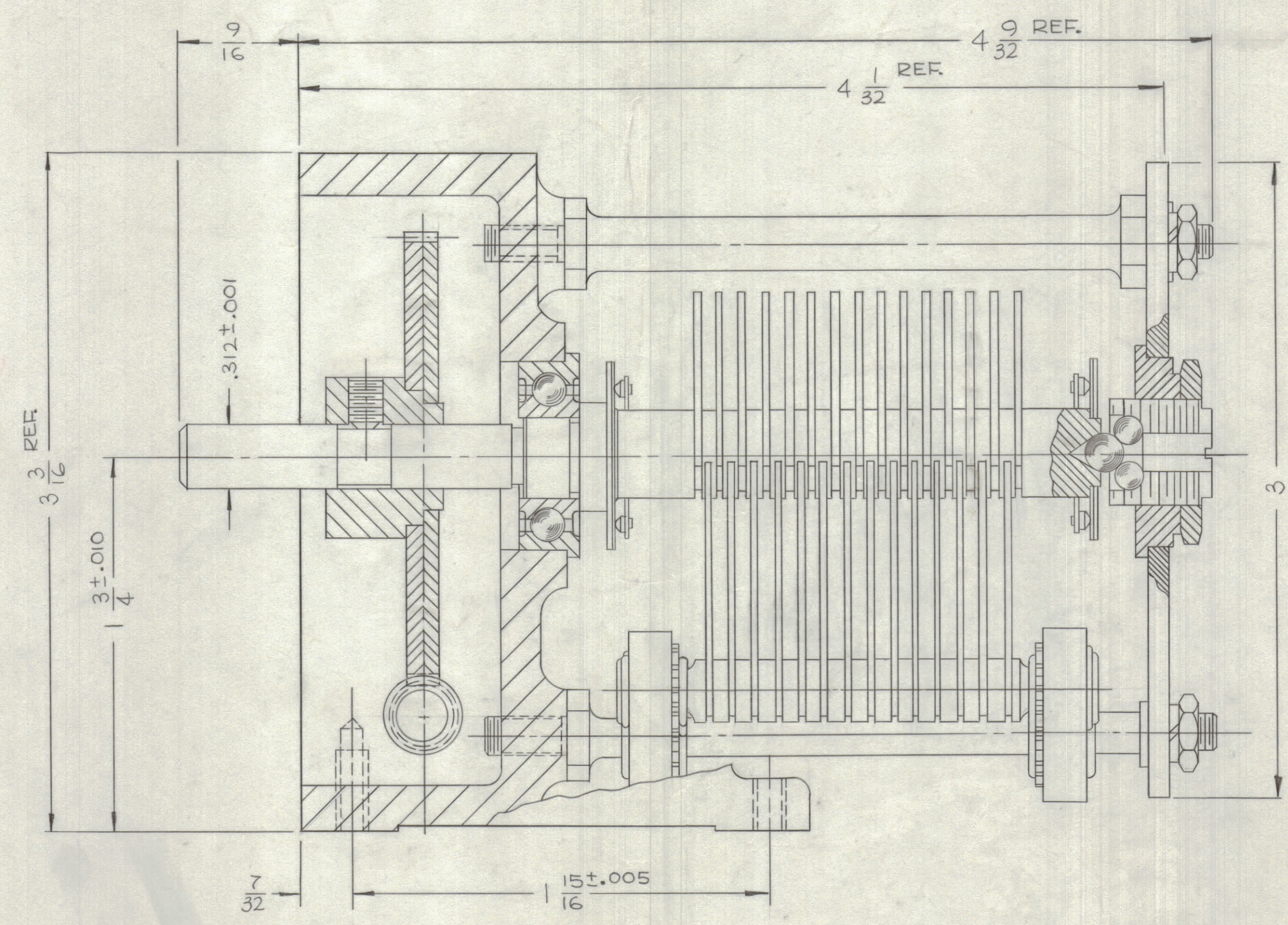
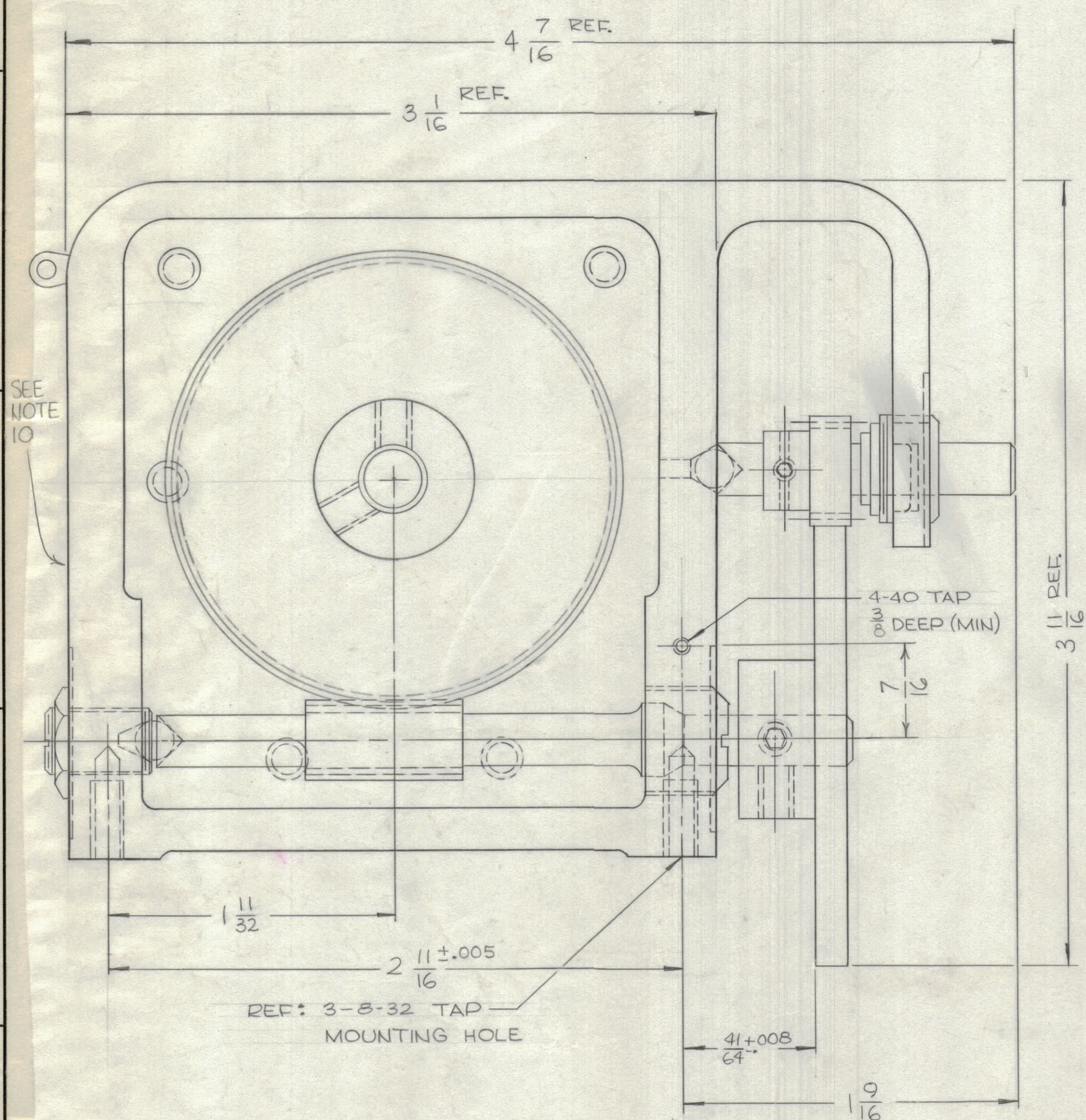
D	4-40 TAPPED ADDED DWG MADE 1 OF 2 B/W IT. 1-3 DELETED STAMP NOTE ADDED SEE SHEET 2 OF 2.	5/25/66	16277	WHD		
C	1 DELETED VEND REF NOTE	4/1/63	10059			
B	1 ITEM (4) WAS SCBP0440BN9	6/22/61	6470	DSM		
A	2 Added (1) 6-32 TAPPED HOLE	4/27/61	4705	DSM		
	1 Added REAR VIEW BOTTOM					

NOTE

1	VOX-3,4,5,6			6-22-62
1	RTF-2	MAS / OSC		11-10-58
1	RTF			2-1-56
1	PMO-1	285		12-17-54
1	VOX-3			12-17-54
REQ PER UNIT	MODEL	PROJECT NO.	ASSY. NO.	DATE

REQ. ITEM	PART NO.	DESCRIPTION	SYMBOL
THE TECHNICAL MATERIEL CORP. MAMARONECK, NEW YORK			
SUB ASSEMBLY			
MATERIAL		WEIGHT PER PC.	
CAPACITOR, VARIABLE AIR			
TYPE & TEMPER		DRAWN	ELEC. DES. APP. MECH. DES. APP.
HEAT TREAT. SPEC.		CHECKED A.J.J. FINAL APPROVAL	
FINISH & SPEC. NO.		SHEET 1 OF 2 A 1000 D	

REVISIONS		DATE	E.M.N. NO.	DRAFT	CHKD	APPD
A	SEE SHEET 1 OF 2	5/25/66	4705	WHD		
B	SEE SHEET 1 OF 2	5/25/66	6470	WHD		
C	SEE SHEET 1 OF 2	5/25/66	10059	WHD		
D	DWG MADE 2 OF 2	5/25/66	16277	WHD		



- NOTES:**
- 1 - AIR GAP: .030 NOMINAL
 - 2 - VOLTAGE TEST: 750 V RMS 60 CYCLES
 - 3 - CAPACITY: EFFECTIVE BETWEEN 0 & 210 PINION SHAFT TURNS; PINION SHAFT TURNS AT FULL MESH POSITION OF PLATES IS 0. SEE CAPACITY CURVE CHART
 - 4 - ROTATION: C.W. ROTATION OF PINION SHAFT TO INCREASE CAPACITY
 - 5 - GEAR RATIO: WORM DRIVE GEAR TO PINION GEAR - 100:22;
ROTOR DRIVE GEAR TO WORM - 100:1;
OVERALL DRIVE TRAIN - 454.545:1
 - 6 - TORQUE: TO OVER COME ANTI-BACKLASH SPRINGS OF ROTOR DRIVE GEAR - 40 INCH OUNCE NOMINAL
OVERALL PINION SHAFT DRIVE 2.5 INCH OUNCES OR LESS

- CONSTRUCTION:**
- 1 - HOUSING: STAINLESS STEEL CASTING
 - 2 - ROTOR SHAFTS & STATOR RODS: COLD DRAWN STEEL
 - 3 - FRAME PARTS: STEEL WITH SILVER OR NICKEL PLATE FINISH
 - 4 - ROTOR & STATOR: SOLDERED ASSEMBLIES OF STEEL COMPONENTS SILVER PLATED, PLATES OF INVAR
 - 5 - GEARS: PINION SHAFT, PINION GEAR & WORM GEAR OF STAINLESS STEEL; ANTI-BACKLASH GEARS OF BRONZE
 - 6 - CONTACT SPRINGS: SILVER PLATED BERYLLIUM COPPER WITH SILVER BUTTONS AGAINST COIN SILVER FACED ROTOR CONTACT DISCS
 - 7 - HARDWARE: STEEL OR COPPER ALLOY WITH CADMIUM OR NICKEL PLATE FINISH
 - 8 - INSULATION: STEATITE OR GR. L-4 OR BETTER PER JAN-I-10 & D.C.-200 TREATED
 - 9 - LUBRICATION: TEXACO UNITEMP. PER MIL-G-3278
 - 10 - MARKING: STAMP TMC PART NUMBER 1/8" HIGH GOTHIC W/LATEST REVISION & MANUFACTURE CODE "S401-12"

CAPACITY CURVE		
CCW PINION TURNS FROM FULL MESH	NOMINAL CAPACITY P.F.	ΔC TOL. P.F. ±
210	0.00	
200	3.39	.15
180	11.09	.17
160	19.99	.30
140	30.28	.45
120	42.68	.64
100	57.62	.86
80	75.54	1.13
60	97.41	1.46
40	124.43	1.87
20	158.68	2.38
* 0	200.00	1.00

* FULL MESH
NOTE: MINIMUM CAPACITANCE 25.0 P F
MAX @ 210 TURNS FROM FULL MESH POSITION

REQ'D.	ITEM	PART NUMBER	DESCRIPTION	SYMBOL
1	VOX34,5,6			
1	RTF-2	MAS OSC		
1	RTF			
1	PMO-1/2	285		
1	VOX-5			

LIST OF MATERIAL		THE TECHNICAL MATERIEL CORP.	
		MAMARONECK, NEW YORK	
MATERIAL	#	TITLE	CAPACITOR, OUTLINE
FINISH	SEE NOTES	REV. LTR.	D

SCALE	MODEL USED ON	ABS'Y. NO.	UNLESS OTHERWISE SPECIFIED DIMENSIONS ARE IN INCHES AND INCLUDE CHEMICALLY APPLIED OR PLATED FINISHES	DRAWN	DATE	FINAL APPROVAL	DATE
DO NOT SCALE	S401-12			WHD	5/25/66	AJJ	6/27/66

DECIMALS	FRACTIONS	TOLERANCES	ANGLES
±.05	± 1/64		± 1/64
±.01			± 30'
±.005			

NOTES