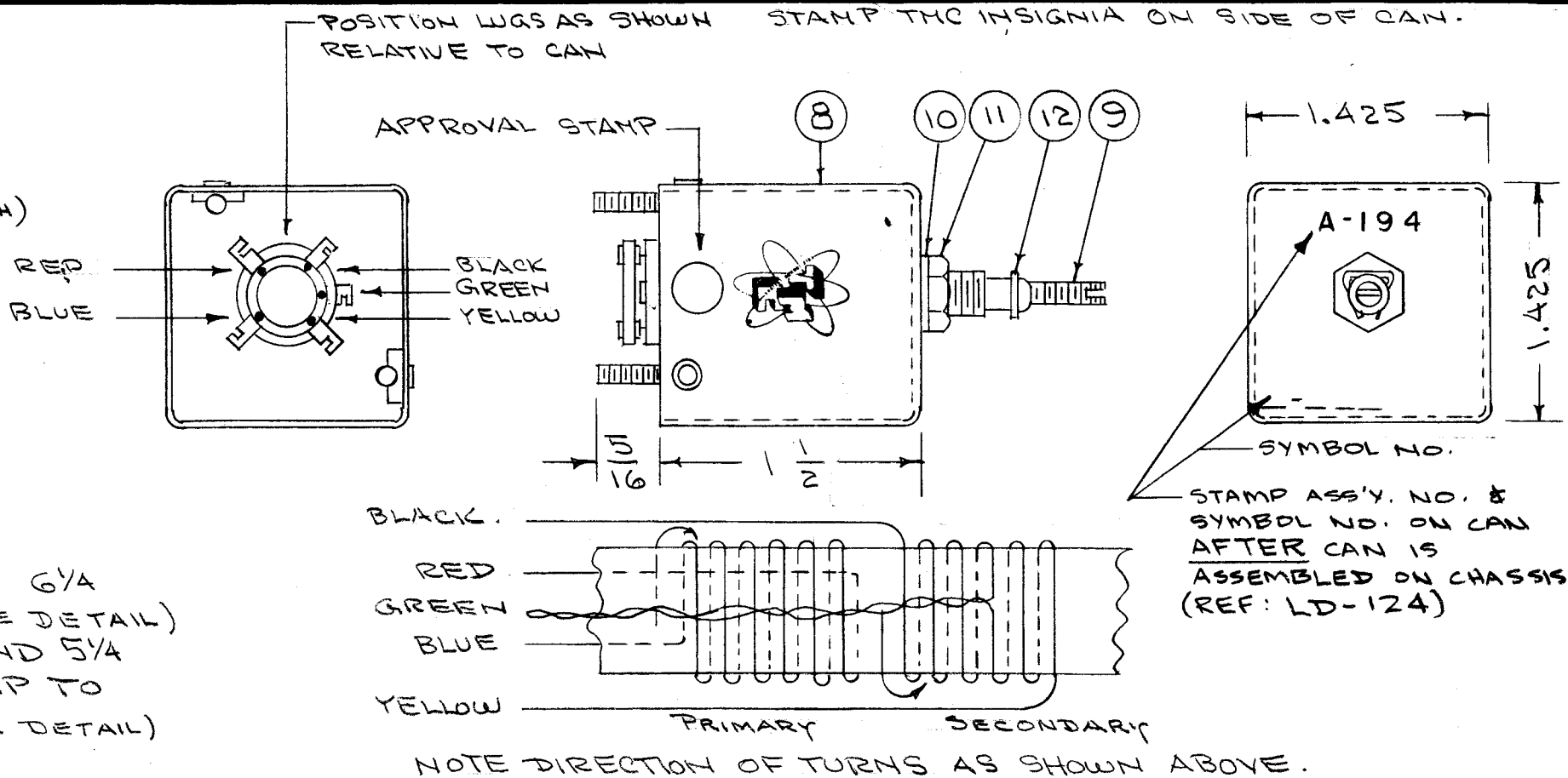
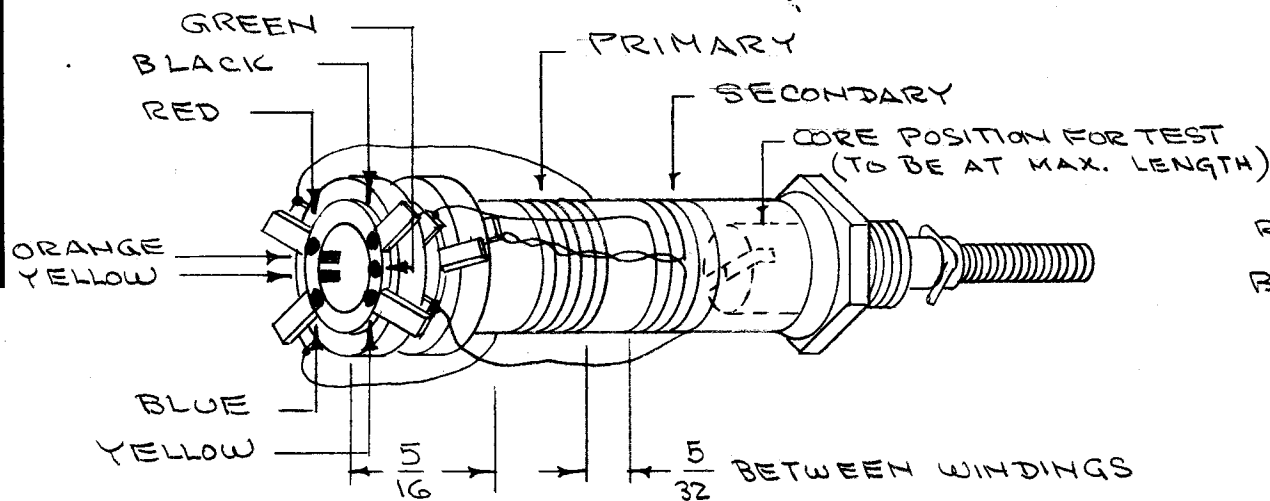


CEMENT ITEM 6,7 (COLLAR) TO COIL FORM WITH ITEM 4.
 COLOR CODE END OF COIL FORM AS BELOW.



WINDING DATA

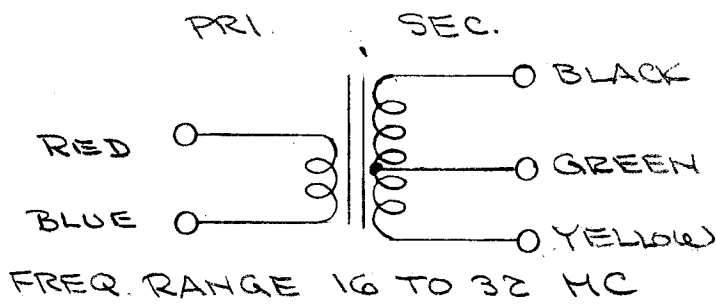
- 1- PRIMARY - STARTING AT BLUE LUG, CLOSE WIND 6 1/4 TURNS OF ITEM 2 ENDING AT RED LUG. (SEE DETAIL)
- 2- SECONDARY - STARTING AT BLACK LUG, CLOSE WIND 5 1/4 TURNS OF ITEM 3 ENDING AT YELLOW LUG. TAP TO GREEN LUG AT 3/8 TURNS FROM START. (SEE DETAIL)
- 3- STAKE LEADS WITH ITEM 4.
- 4- BAKE FOR 1/2 HOUR AT 215° F.
- 5- SATURATE COILS WITH ITEM 5. (Q MAX)
- 6- BAKE FOR 1/2 HOUR AT 215° F.
- 7- REPEAT STEPS 5 AND 6.
- 8- STRIP, TIN AND SOLDER CONNECT LEADS AS ABOVE.

TEST DATA (SEE ABOVE FOR CORE POSITION)

TEST LEADS 1/4" APPROX. NO CAN NEEDED FOR TEST.

	PRIMARY		SECONDARY	
	BLUE/RED	BLACK/YELLOW	BLACK/GREEN	
L _{uh}	.95 (.905 - .995)	.54 (.515 - .565)	.26 (.229 - .291)	
Q	115 OR GREATER	145 OR GREATER	100 OR GREATER	
F	25 MCS	25 MCS	25 MCS	

USE BOONTON Q METER 160A OR EQUIV.



REQ. ITEM	PART NO.	DESCRIPTION	SYMBOL
X 13	BS-100	SOLDER, SOFT	
1 12	SP-102	SPRING LOCK P/O CF-114	
1 11	NT-102	NUT, HEX P/O CF-114	
1 10	LWI 25 LRC	WASHER, LOCK P/O CF-114	
1 9	CI-109-19	CORE	
1 8	A-173	CAN ASSY.	
1 7	TE-146-4	COLLAR & LUGS	
1 6	TE-146-1	" & "	
X 5	GL-102	Q MAX A-27	
X 4	GL-103	CEMENT, DUCCO	
X 3	WI-102-6-0	WIRE, # 24 SCE	
X 2	WI-107-13	WIRE, # 32 DSC	
1 1	CF-114-3	COIL FORM	

ITEM	CHANGED FROM	DATE	CH. NO.	DRAFTS	CHECKER	ENG. APP.
1	COMPLETE REVISION SUPERSEDES A-193	10/8/16	2		P.L.K.	AJT

TOLERANCES		SCALE:	
DIM. ±			
2. DIM. ±			
ULAR DIM. ±			

REQ. PER UNIT	MODEL	PROJECT NO.	ASS'Y. NO.	DATE
1	FFRD-8	104	A-327	10-8-50

THE TECHNICAL MATERIEL CORP. MAMARONECK, NEW YORK			
TRANSFORMER ASSY.			
MIXER, T802, BAND 8			
TYPE & TEMPER	HEAT TREAT. SPEC.	DRAWN	CHECKED
		P.L.K.	
FINISH & SPEC. NO.		ELEC. DES. APP.	MECH. DES. APP.
FINAL APPROVAL			SYMBOL
A-194			B