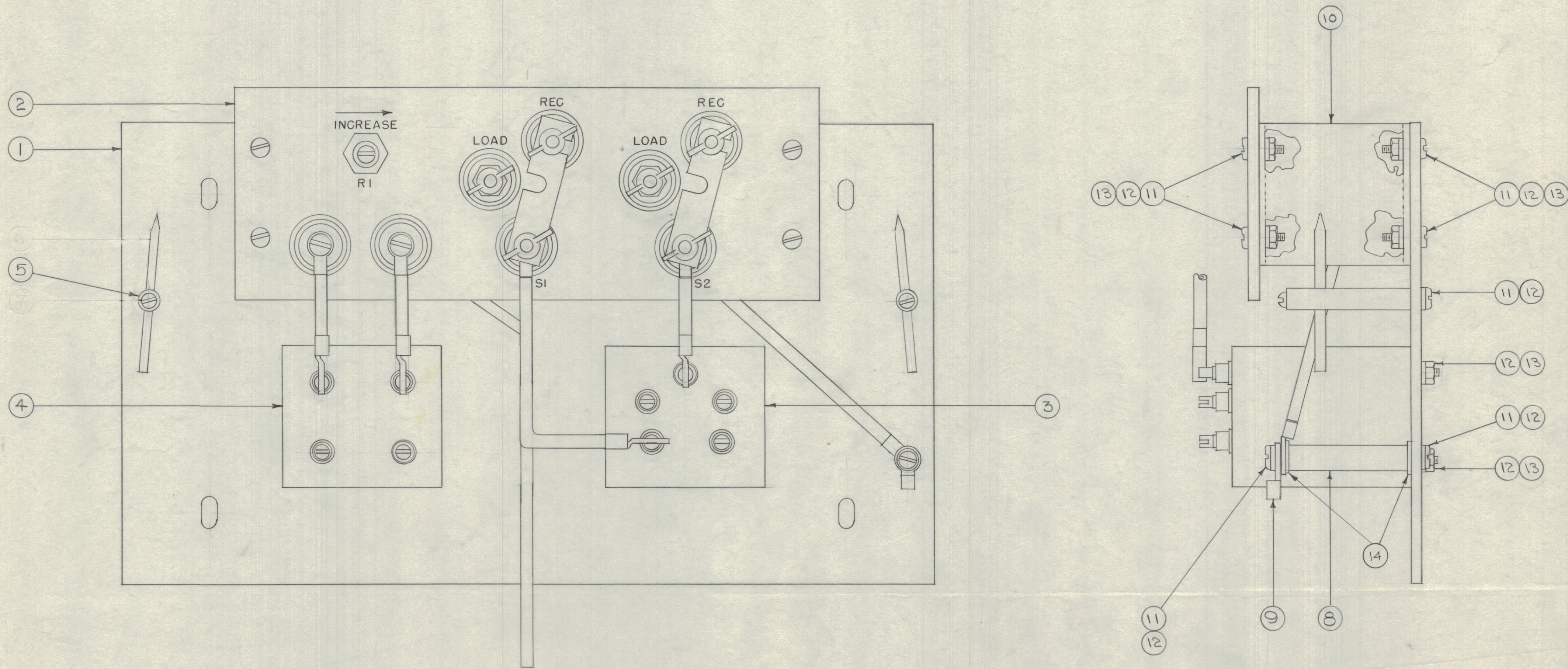


IF IT IS FOUND DESIRABLE TO CHANGE ANY TOLERANCE OR OTHER DETAIL SPECIFIED ON THIS DRAWING NOTIFY THE PURCHASER PROMPTLY.
 MAXIMUM ALLOWABLE TOLERANCES HAVE BEEN DETERMINED AND DEVIATIONS WILL BE CAUSE FOR REJECTION. REMOVE ALL BURRS AND SHARP EDGES



A-190 F

F	MDW. UPDATED E.T. (COPPER) 7/16/55 14397 MKK QVS						
E	ITEM 5 WAS DELETED 3/25/57 5 EC						
D	ITEM 5 WAS DELETED 5/15/54 7 MKK QVS						
C	COMPLETE REVISION 11/18/54 3 ESB MKK QVS						
ISSUE	ITEM	CHANGED FROM	DATE	CN. NO.	DRAFTS	CHECKER	ENG. APP.

TOLERANCES: DEC. DIM. ±, FRAC. DIM. ±, ANGULAR DIM. ±
 SCALE: DRILL, PUNCH, COMMERCIAL STOCK SIZES AND MANUFACTURERS TOLERANCES ARE NOT INCLUDED.

NOTICE TO PERSONS RECEIVING THIS DRAWING

THE TECHNICAL MATERIEL CORPORATION claims proprietary right in the material disclosed herein. This drawing is issued in confidence for engineering information only and may not be reproduced or used to manufacture anything shown hereon without permission from THE TECHNICAL MATERIEL CORPORATION to the user. This drawing is loaned for mutual assistance and is subject to recall at any time.

Property of:
 THE TECHNICAL MATERIEL CORPORATION
 MAMARONECK, NEW YORK

1	BAC-2	157	A-188	11-4-54
MODEL	PROJECT NO.	ASSY. NO.	DATE	

REQ. ITEM	PART NO.	DESCRIPTION	SYMBOL																				
2	14	WA-109-16	WASHER, FIBRE																				
16	13	NTH622N10	NUT, HEX																				
20	12	LWEOGMRN	WASHER, LOCK																				
12	11	SCBFO622BNG	SCREW, MACHINE																				
2	10	MS-112	BRACKET																				
1	9	TE-1A1-1	TERMINAL																				
1	8	NS3W014	INSULATOR, PILLAR																				
		DELETED																					
		DELETED																					
2	5	A107	SPARK ROD ASSY.																				
1	4	TR-004	TRANSFORMER, RF																				
1	3	TR-003	" " RF																				
1	2	A-192	TERM. BD. ASSY.																				
1	1	MS-113	MOUNTING PLATE																				
<table border="1"> <tr> <td colspan="4">THE TECHNICAL MATERIEL CORP. MAMARONECK, NEW YORK</td> </tr> <tr> <td colspan="4">TRANSFORMER & TERMINAL BOARD SUB ASSEMBLY</td> </tr> <tr> <td>TYPE & TEMPER.</td> <td>CDD. 11-4-54</td> <td>QVS</td> <td>M.H.S.</td> </tr> <tr> <td>HEAT TREAT. SPEC.</td> <td>1102</td> <td>QVS</td> <td></td> </tr> <tr> <td>FINISH & SPEC. NO.</td> <td colspan="3">A-190 F</td> </tr> </table>				THE TECHNICAL MATERIEL CORP. MAMARONECK, NEW YORK				TRANSFORMER & TERMINAL BOARD SUB ASSEMBLY				TYPE & TEMPER.	CDD. 11-4-54	QVS	M.H.S.	HEAT TREAT. SPEC.	1102	QVS		FINISH & SPEC. NO.	A-190 F		
THE TECHNICAL MATERIEL CORP. MAMARONECK, NEW YORK																							
TRANSFORMER & TERMINAL BOARD SUB ASSEMBLY																							
TYPE & TEMPER.	CDD. 11-4-54	QVS	M.H.S.																				
HEAT TREAT. SPEC.	1102	QVS																					
FINISH & SPEC. NO.	A-190 F																						