

IF IT IS FOUND DESIRABLE TO CHANGE ANY TOLERANCE OR OTHER DETAIL SPECIFIED ON THIS DRAWING NOTIFY THE PURCHASER PROMPTLY.

MAXIMUM ALLOWABLE TOLERANCES HAVE BEEN DETERMINED AND DEVIATIONS WILL BE CAUSE FOR REJECTION. REMOVE ALL BURRS AND SHARP EDGES

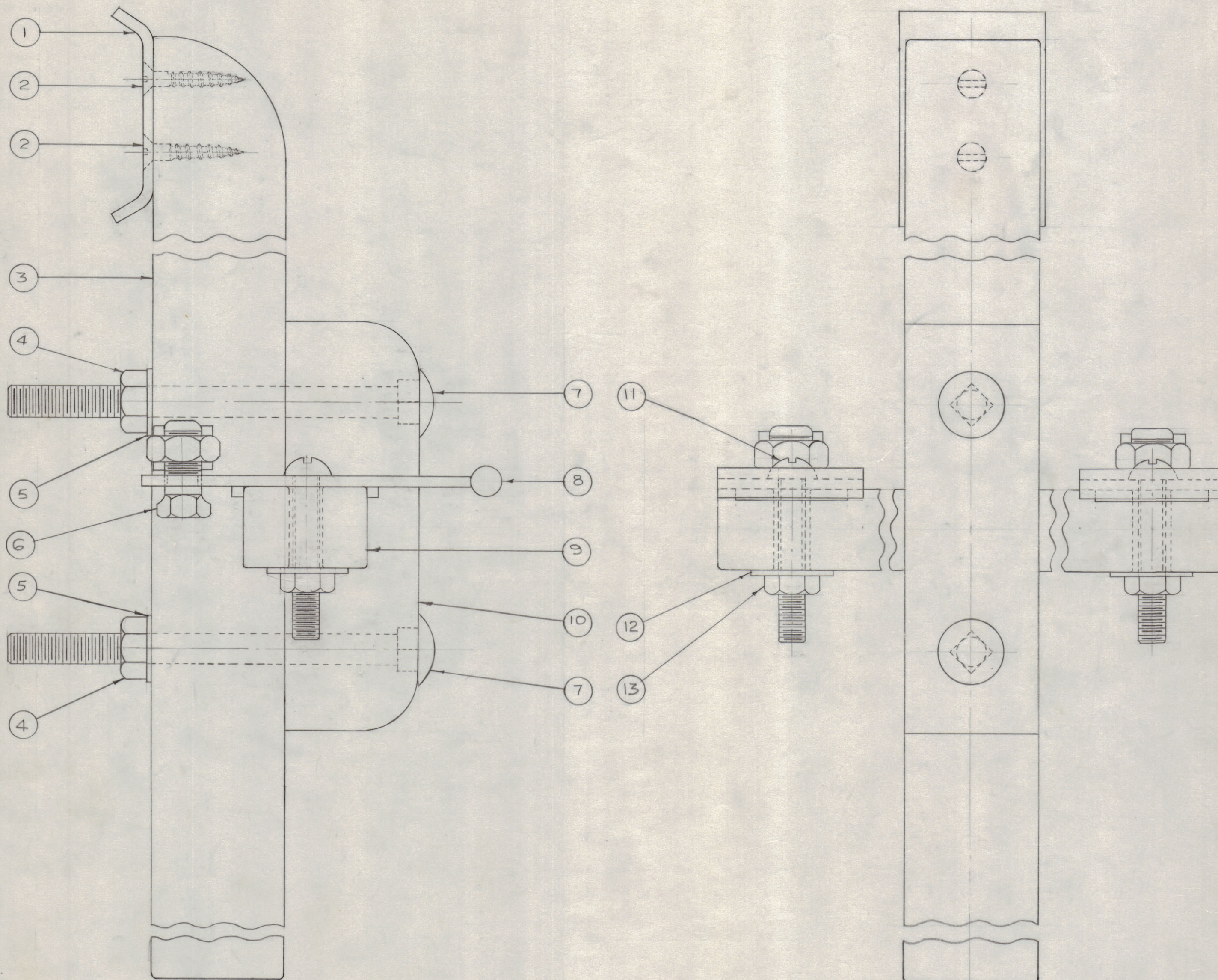
RELEASED

NOTICE TO PERSONS RECEIVING THIS DRAWING

THE TECHNICAL MATERIEL CORPORATION claims proprietary right in the material disclosed hereon. This drawing is issued in confidence for engineering information only and may not be reproduced or used to manufacture anything shown hereon without permission from THE TECHNICAL MATERIEL CORPORATION to the user. This drawing is loaned for mutual assistance and is subject to recall at any time.

Property of:

THE TECHNICAL MATERIEL CORPORATION
MAMARONECK, NEW YORK



NOTE:

COAT THREADS OF ITEM 7 WITH LIGHT APPLICATION OF LU-102 (ITEM 14) BEFORE INSTALLING NUT.

A-187 B

X	14	LU-102	ANTI-SEIZE COMPOUND
2	13	AN-335-5	NUT, HEX.
2	12	WA-104-2	WASHER
2	11	SCRS3118SC32	MACHINE SCREW
1	10	WD-118	CLAMPING MEMBER
1	9	NS-105	INSULATOR, STRAIN
2	8	A-186	CONTACT ARM ASSEMBLY
2	7	SC-109	CARRIAGE BOLT
2	6	TE-107	SOLDERLESS CONNECTOR
2	5	FW37MSC	WASHER FLAT
2	4	SC-109	NUT (COMES WITH #7 AS UNIT)
1	3	WD-117	LEVER
2	2	AN-550-B10-8	WOOD SCREW
1	1	MS-152	FULCRUM PLATE

REQ. ITEM	PART NO.	DESCRIPTION	SYMBOL
THE TECHNICAL MATERIEL CORP. MAMARONECK, NEW YORK			
SWITCH ARM ASSEMBLY			
MATERIAL		WEIGHT PER PC.	
TYPE & TEMPER			
HEAT TREAT. SPEC.			
FINISH & SPEC. NO.			

ISSUE	ITEM	CHANGED FROM	DATE	CN. NO.	DRAFTS	CHECKER	ENG. APP.
B	3	AN960-C616	12-12-52	2	JAD		
A	2	AN-550-B10-10	12-8-52	1	JAD	RFB	
	1	WA-105	12-8-52	1	JAD	RFB	

TOLERANCES		SCALE:
ALL OTHERS	DEC. DIM. ± FRAC. DIM. ± ANGULAR DIM. ±	DRILL, PUNCH, COMMERCIAL STOCK SIZES AND MANUFACTURERS TOLERANCES ARE NOT INCLUDED.

MODEL	PROJECT NO.	ASSY. NO.	DATE
	141		10-9-52