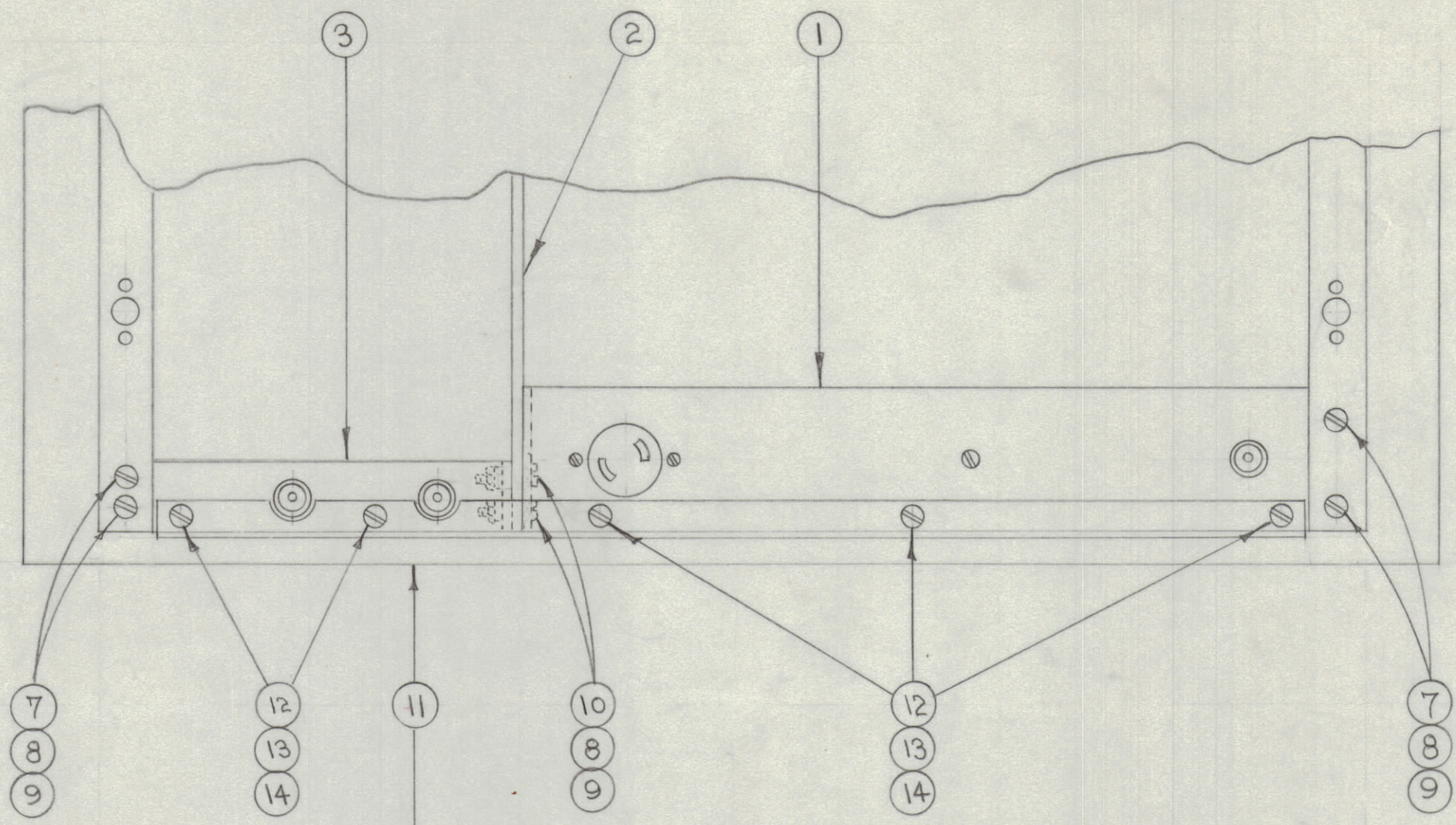
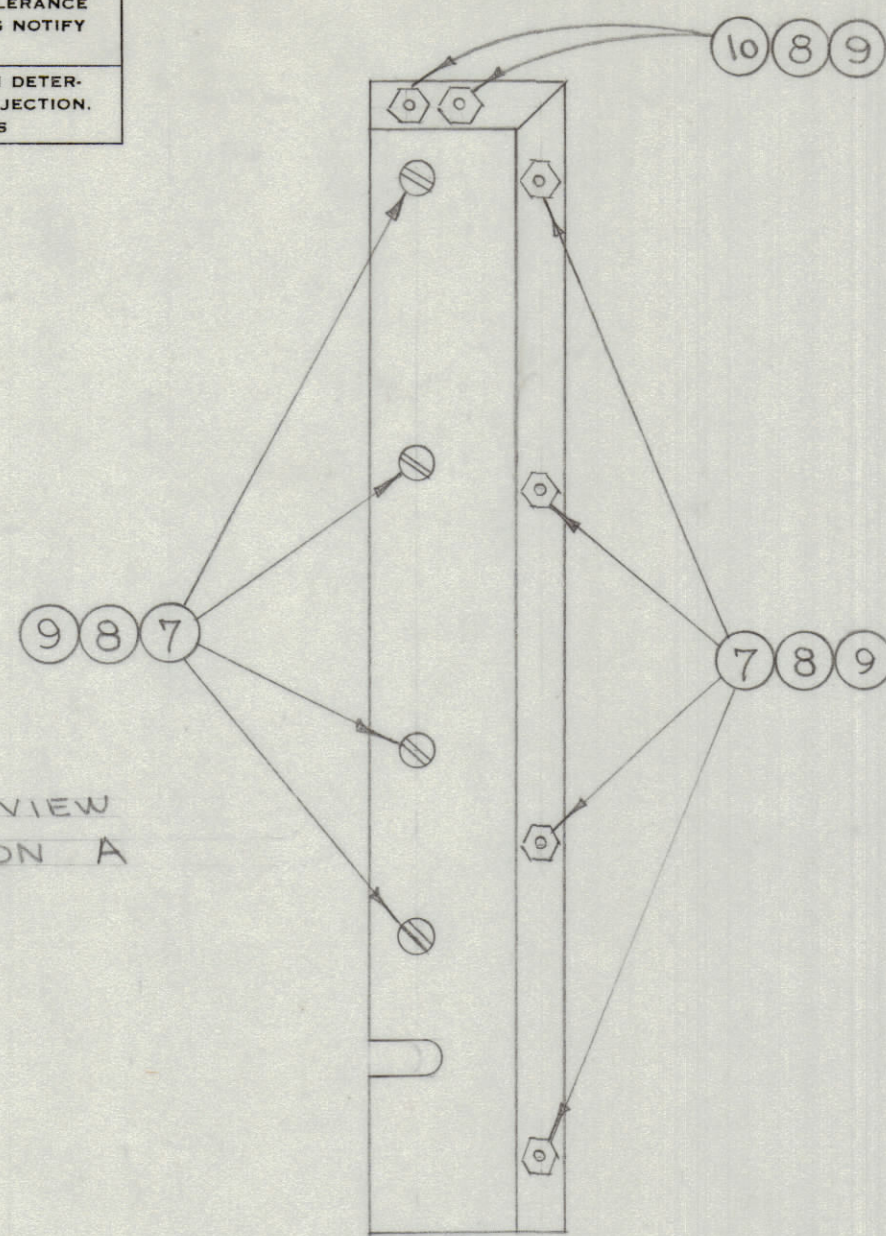


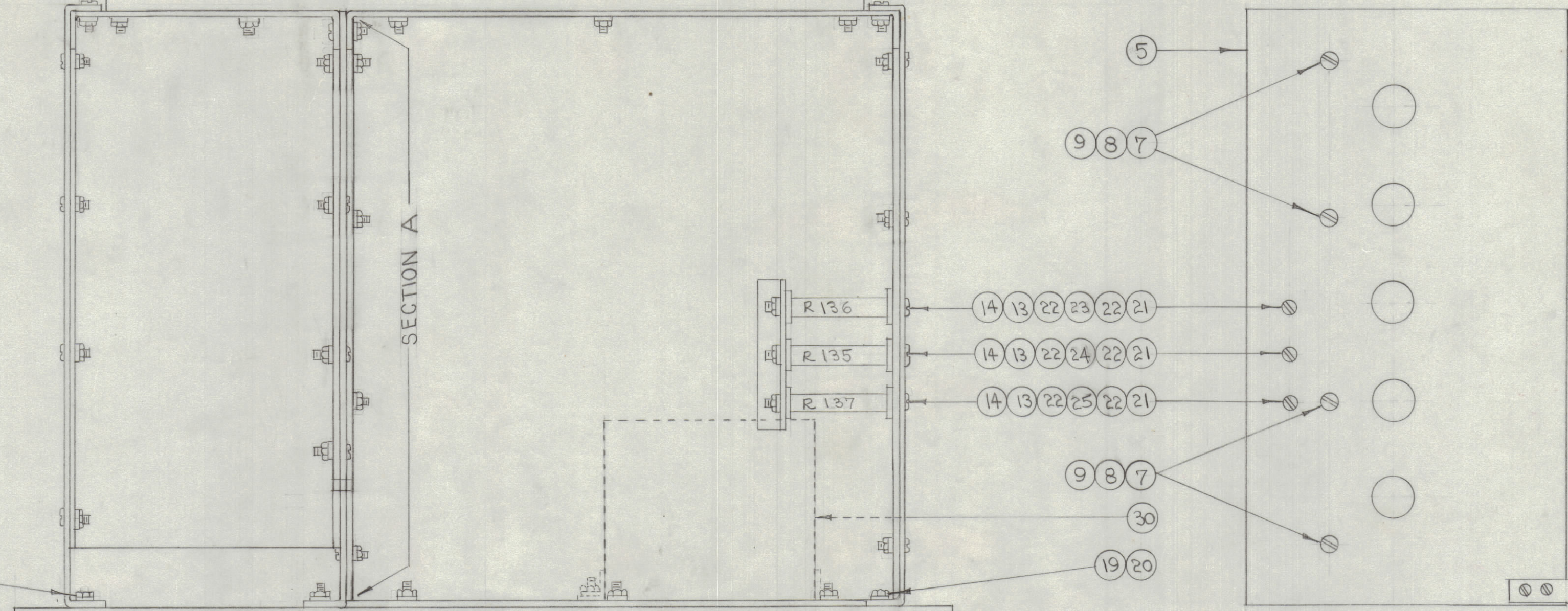
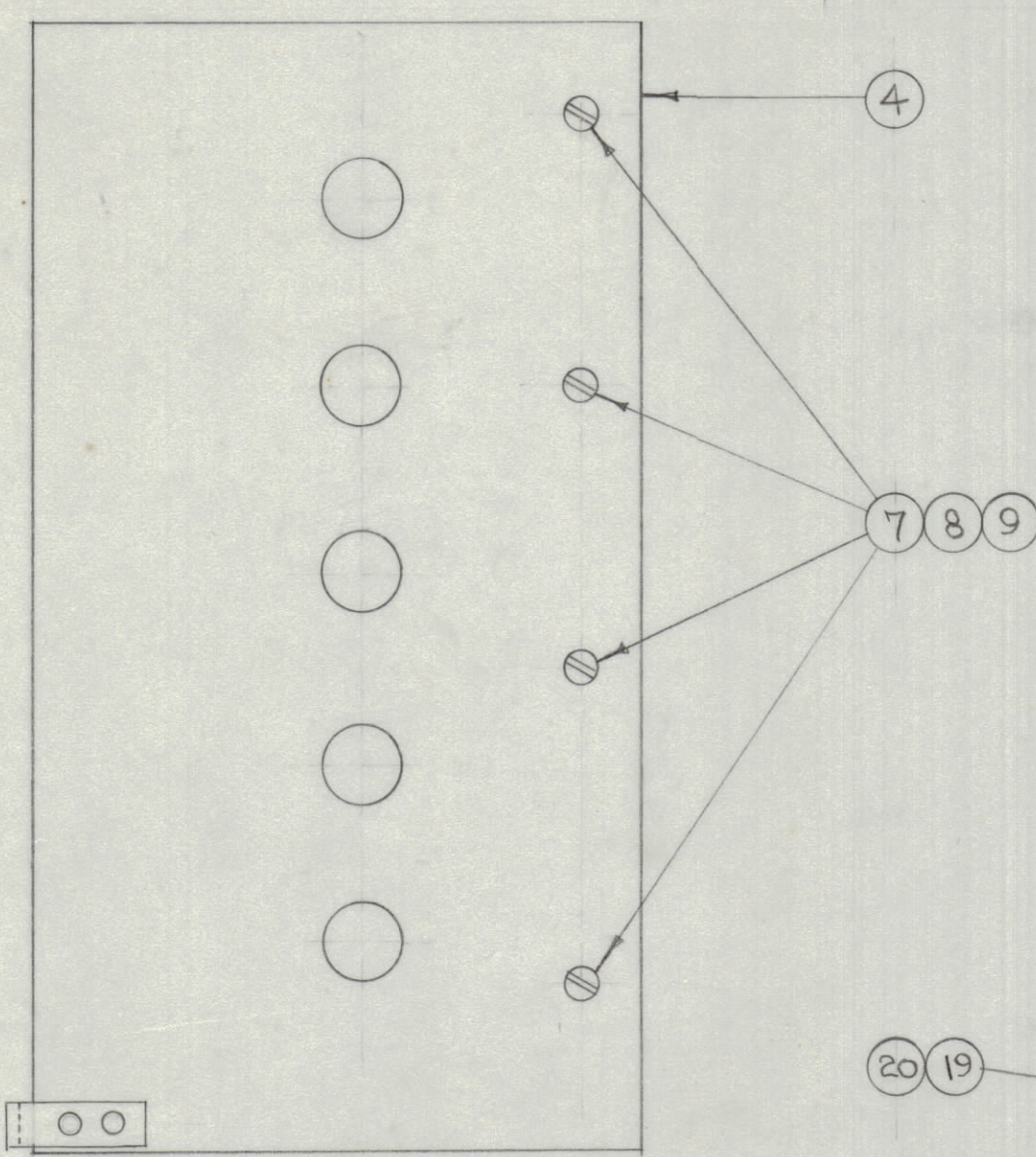
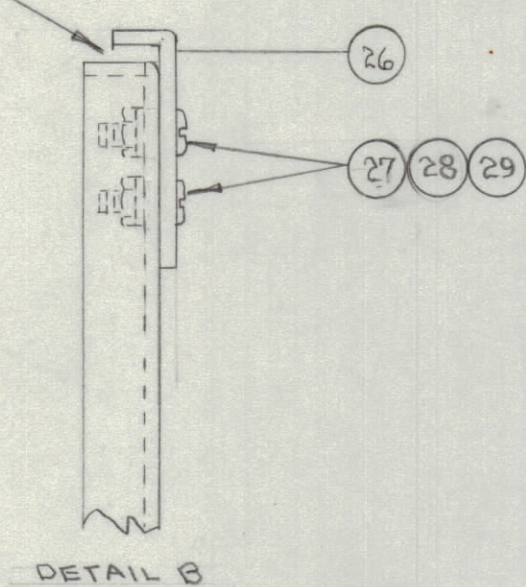
IF IT IS FOUND DESIRABLE TO CHANGE ANY TOLERANCE OR OTHER DETAIL SPECIFIED ON THIS DRAWING NOTIFY THE PURCHASER PROMPTLY.  
 MAXIMUM ALLOWABLE TOLERANCES HAVE BEEN DETERMINED AND DEVIATIONS WILL BE CAUSE FOR REJECTION. REMOVE ALL BURRS AND SHARP EDGES

RELEASED

SIDE VIEW SECTION A

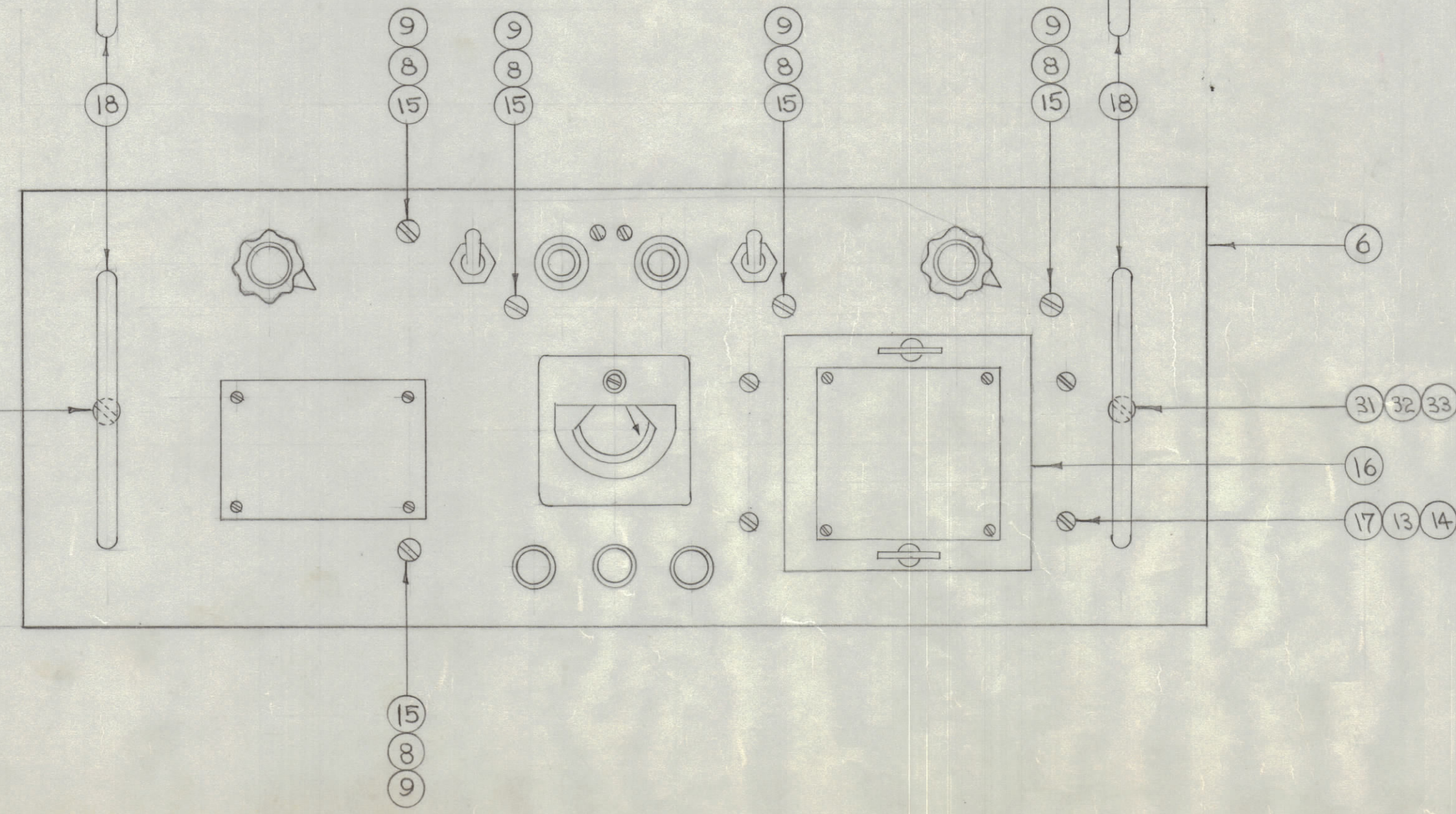


.064 CLEARANCE BETWEEN BRACKET AND LIP



ALL BOTTOM LIPS OMITTED TO SHOW HARDWARE DETAIL

SEE DETAIL B



ALL SCREW HEADS ON FRONT PANEL ARE TO BE PAINTED WITH SMOOTH GREY ENAMEL (S-115).

COMPONENTS AND WIRING OMITTED. (SEE SUB ASSEMBLYS, ITEMS 1-3-4-5 AND 6 FOR DETAILS)

NOTICE TO PERSONS RECEIVING THIS DRAWING

THE TECHNICAL MATERIEL CORPORATION claims proprietary right in the material disclosed herein. This drawing is issued in confidence for engineering information only and may not be reproduced or used to manufacture anything shown hereon without permission from THE TECHNICAL MATERIEL CORPORATION to the user. This drawing is loaned for mutual assistance and is subject to recall at any time.

Property of:  
 THE TECHNICAL MATERIEL CORPORATION  
 MAMARONECK, NEW YORK

2	33	NTH 1032 BCB	NUT, HEX.
2	32	LWS 10 MRC	LOCKWASHER, SPLIT

2	31	SCFS 1032 BCB	SCREW, MACHINE	
1	30	A-147	XTAL OVEN ASSEMBLY	
4	29	NTH0440BC8	NUT, HEX	
4	28	LWS 04 MRC	LOCKWASHER, SPLIT	
4	27	SCBS0440BC4	SCREW, MACHINE	
2	26	MS-162	BRACKET, COVER	
1	25	A-238	RESISTOR, FIXED, SUB ASSY.	R-137
1	24	RW-109-28	RESISTOR, FIXED	R-135
1	23	RW-104	RESISTOR, FIXED	R-136
6	22	WA-101-3	WASHER, FIBER	
3	21	SCBS0632BC26	SCREW, MACHINE	
4	20	AN3C-5A	BOLT, MACHINE	
4	19	LWS 10 MRC	LOCKWASHER, SPLIT	
2	18	HA-101	HANDLE, FRONT	
4	17	SCFS0632BC8	SCREW, MACHINE	
1	16	A-138	DOOR, XTALOVEN, SUB ASSY.	
5	15	SCFS0832BC8	SCREW, MACHINE	
12	14	NTH0632BC8	NUT, HEX.	
12	13	LWS 06 MRC	LOCKWASHER, SPLIT	
5	12	SCBS0632BC6	SCREW, MACHINE	
1	11	MS-175	REAR ANGLE BRACKET	
2	10	SCBS0832BC7	SCREW, MACHINE	
2	9	NTH0832BC10	NUT, HEX	
2	8	LWS 08 MRC	LOCKWASHER, SPLIT	
2	7	SCBS0832BC6	SCREW, MACHINE	
1	6	A-182	PANEL, FRONT - SUB ASSY.	
1	5	A-181	SIDE, LEFT - SUB ASSY.	
1	4	A-180	SIDE, RIGHT - SUB ASSY.	
1	3	A-202	CHASSIS, POWER - SUB ASSY.	
1	2	MS-131	CENTER BRACKET	
1	1	A-184	CHASSIS, MAIN, COMP. SUB ASSY.	

ISSUE	ITEM	CHANGED FROM	DATE	CN. NO.	DRAFTS	CHECKER	ENG. APP.
A	1	ITEM 23 WAS RW-108-42	11-1952	1	C.D.D.	[Signature]	[Signature]
TOLERANCES							
ALL OTHERS	DEC. DIM. ±	DRILL PUNCH COMMERCIAL STOCK SIZES AND MANUFACTURERS TOLERANCES ARE NOT INCLUDED.					
	FRAC. DIM. ±						
	ANGULAR DIM. ±						

LFA	109	10-29-52
MODEL	PROJECT NO.	DATE
	ASSY. NO.	
USED ON		

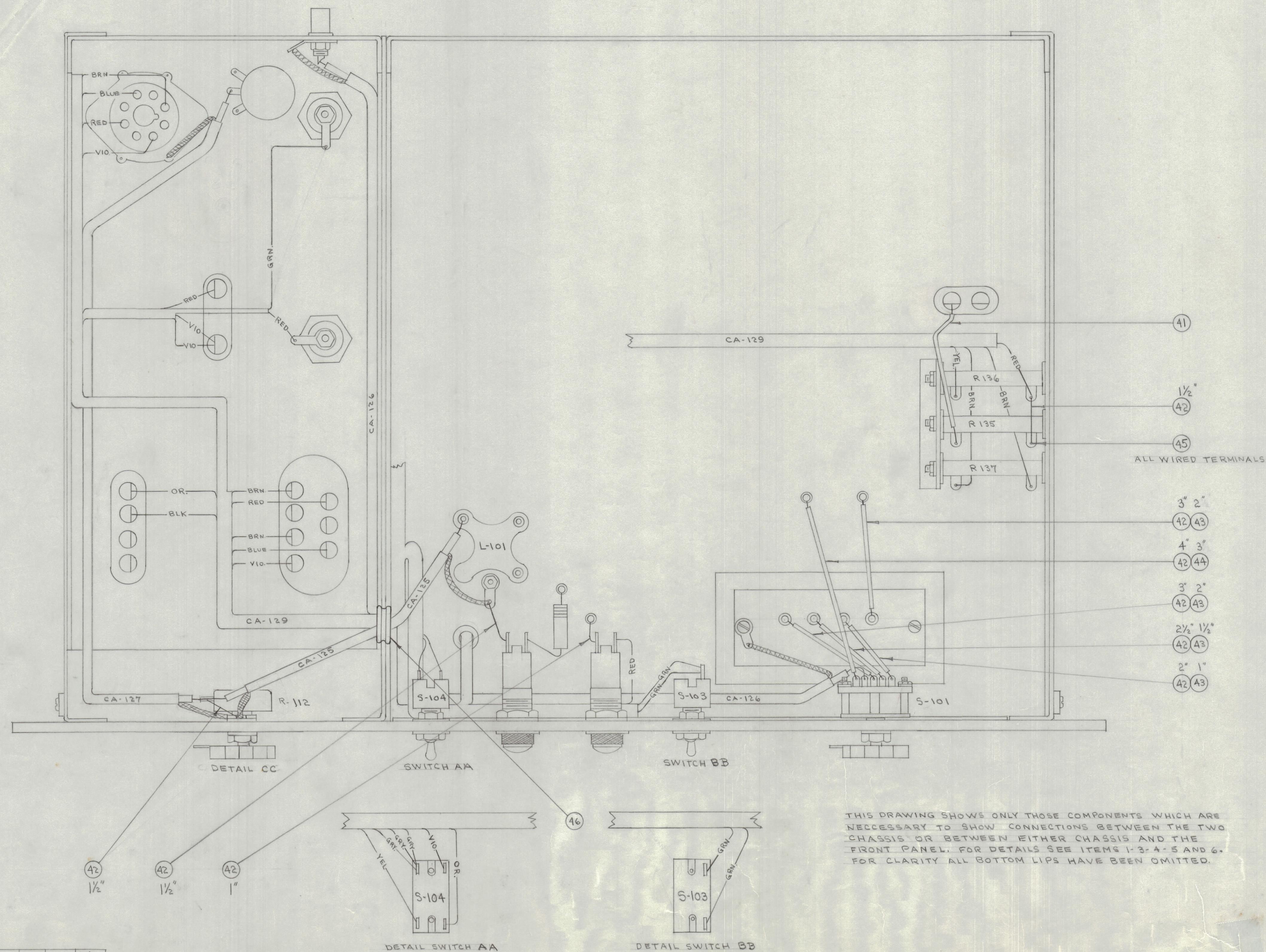
REG. ITEM	PART NO.	DESCRIPTION	SYMBOL
STOCK SIZE			
MATERIAL WEIGHT PER PC.			
TYPE & TEMPER			
HEAT TREAT. SPEC.			
FINISH & SPEC. NO.			
THE TECHNICAL MATERIEL CORP. MAMARONECK, NEW YORK			
MAIN ASSEMBLY			
SHEET 1 OF 3			
C.O.D. 10-29-52			
DRAWN			
ELEC. DES. APP.			
MECH. DES. APP.			
CHECKED			
FINAL APPROVAL			
A-183			A

A-183 A



IF IT IS FOUND DESIRABLE TO CHANGE ANY TOLERANCE OR OTHER DETAIL SPECIFIED ON THIS DRAWING NOTIFY THE PURCHASER PROMPTLY.  
 MAXIMUM ALLOWABLE TOLERANCES HAVE BEEN DETERMINED AND DEVIATIONS WILL BE CAUSE FOR REJECTION. REMOVE ALL BURRS AND SHARP EDGES.

RELEASED



WIRE NO.	COLOR	FROM		TO	
		COMPONENT	PIN OR TERM.	COMPONENT	PIN OR TERM.
1	BROWN	STAND OFF		XV 102	3
2	ORANGE	STAND OFF		E 102	2
3	RED	I 101		F 101	
4	GREEN	L 107		C 126	
5	RED	L 107		L 106 C 125	
6	BROWN	R 137		T 101	8
7	ORANGE	T 101	1	F 102	
8	BLUE	XV 107	6	T 101	7
9	BROWN	XV 107	8	T 101	10
10	RED	XV 107	4	T 101	5
11	VIOLET	XV 107	2	L 106	
12	VIOLET	L 106		T 101	11
13	RED	C 127		STAND OFF	
14	WHITE	STAND OFF		M 101	
15	GREEN	L 107		S 103	
16	GREEN	STAND OFF		STAND OFF	
17	GREEN	STAND OFF		S 103	
18	GREY	S 104		T 101	3
19	RED	STAND OFF		S 132	
20	YELLOW	R 136		XV 108	1
21	GREEN	XV 106	6	STAND OFF	
22	BROWN	R 137		XV 101	4
23	BROWN	XV 101	4	XV 106	3
24	BROWN	XV 106	3	XV 105	3
25	BROWN	XV 105	3	XV 104	9
26	YELLOW	XV 105	2	XV 106	2
27	ORANGE	S 104		J 104	
28	YELLOW	S 104		J 104	
29	BROWN	XV 102	3	XV 103	3
30	GREY	S 104		STAND OFF	
31	VIOLET	F 102		F 101	

A-183 A

32	GREY	S 104		E 102	4
33	VIOLET	S 104		F 102	
34	RED	F 101		E 102	5

**NOTICE TO PERSONS RECEIVING THIS DRAWING**

THE TECHNICAL MATERIEL CORPORATION claims proprietary right in the material disclosed herein. This drawing is issued in confidence for engineering information only and may not be reproduced or used to manufacture anything shown herein without permission from THE TECHNICAL MATERIEL CORPORATION to the user. This drawing is loaned for mutual assistance and is subject to recall at any time.

Property of:  
 THE TECHNICAL MATERIEL CORPORATION  
 MAMARONECK, NEW YORK

1	A6	ANS 931-3-10	GROMMET, ELASTIC	
X	A5	BS-100	SOLDER, SOFT	
3"	A4	PX-104-4-.034	INSULATION, SLEEVING (GRN.)	
6 1/2"	A3	PX-104-6-.034	INSULATION, SLEEVING (BLUE)	
20"	A2	WL-100-7	WIRE, BUSS BAR	
3"	A1	SRIR(7)20U55	CABLE, INSULATED (GRN.)	

REQ.	ITEM	PART NO.	DESCRIPTION	SYMBOL
THE TECHNICAL MATERIEL CORP. MAMARONECK, NEW YORK				
MAIN ASSEMBLY				
SHEET 2 OF 3				
TYPE & TEMPER		C.O.D. 10-31-52	A. J. J.	
HEAT TREAT. SPEC.		M.H.S.		
FINISH & SPEC. NO.				FINAL APPROVAL
				A-183 A

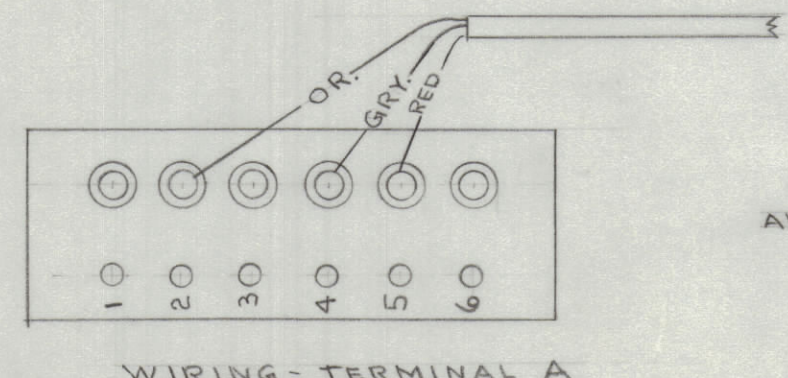
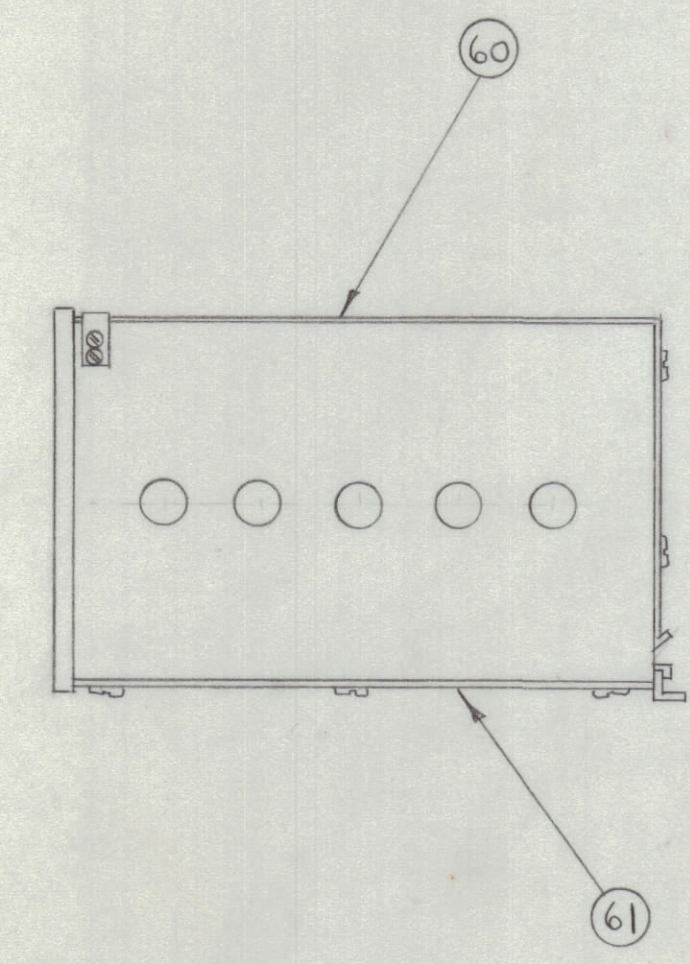
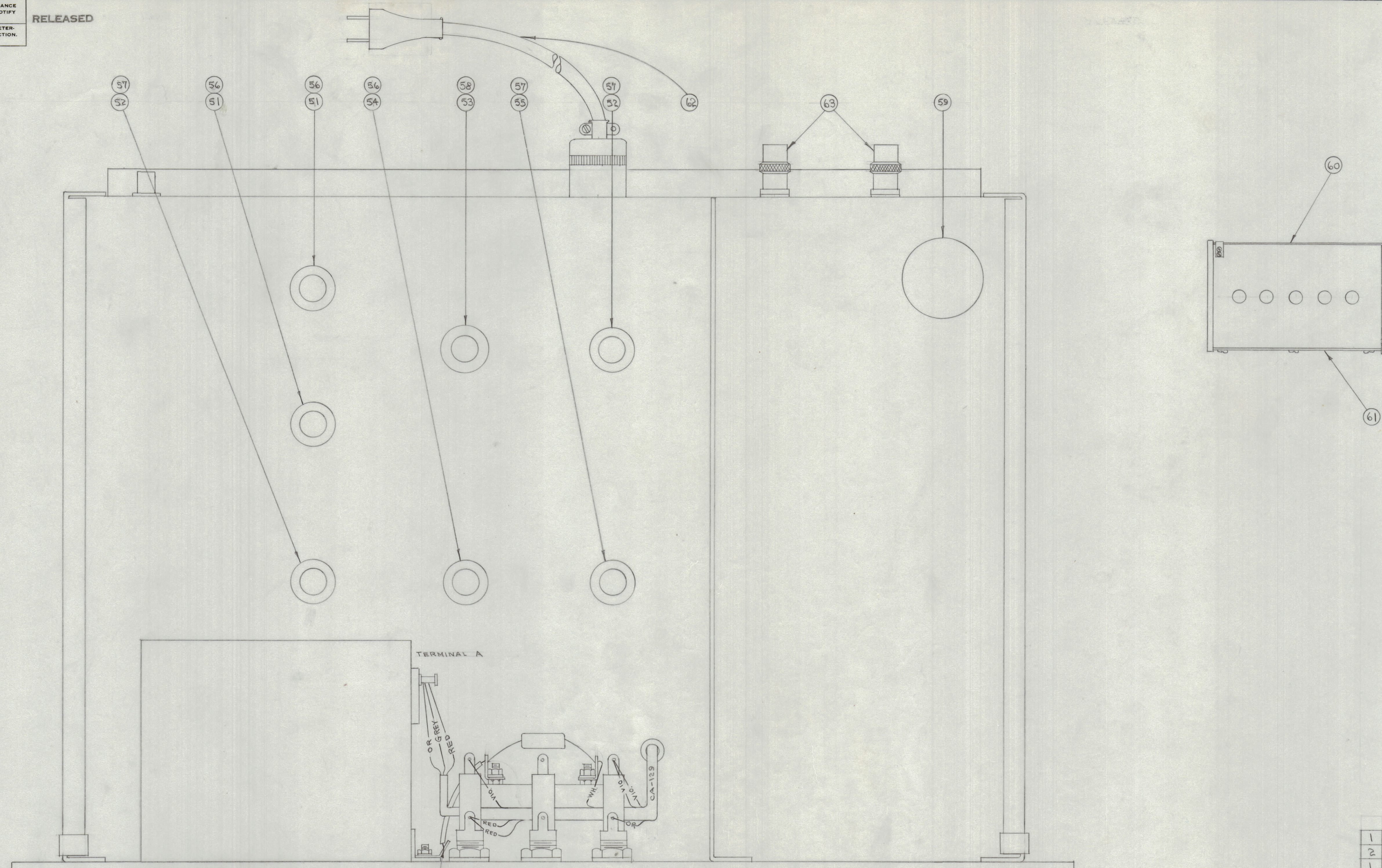
LFA	109	10-31-52
MODEL	PROJECT NO.	DATE
USED ON		

A	1-2	SEE SHEET 1 OF 3	12-1952	1	C.D.D.		
ISSUE	ITEM	CHANGED FROM	DATE	CN. NO.	DRAFTS	CHECKER	ENG. APP.
TOLERANCES							
SCALE: 1/16" = 1"							
DRILL, PUNCH, COMMERCIAL STOCK SIZES AND MANUFACTURERS TOLERANCES ARE NOT INCLUDED.							



IF IT IS FOUND DESIRABLE TO CHANGE ANY TOLERANCE OR OTHER DETAIL SPECIFIED ON THIS DRAWING NOTIFY THE PURCHASER PROMPTLY.  
 MAXIMUM ALLOWABLE TOLERANCES HAVE BEEN DETERMINED AND DEVIATIONS WILL BE CAUSE FOR REJECTION. REMOVE ALL BURRS AND SHARP EDGES

RELEASED



45  
ALL WIRED TERMINALS

THIS DRAWING SHOWS ONLY THOSE COMPONENTS WHICH ARE NECESSARY TO SHOW WIRING CONNECTIONS OR THOSE WHICH HAVE NOT BEEN PICKED UP ON PREVIOUS ASSEMBLYS. SEE ITEMS 1-3-4-5-6 FOR DETAILS.

ITEMS 62 AND 63 SUPPLIED AS LOOSE ITEMS

NOTICE TO PERSONS RECEIVING THIS DRAWING

THE TECHNICAL MATERIEL CORPORATION claims proprietary right in the material disclosed hereon. This drawing is issued in confidence for engineering information only and may not be reproduced or used to manufacture anything shown hereon without permission from THE TECHNICAL MATERIEL CORPORATION to the user. This drawing is loaned for mutual assistance and is subject to recall at any time.

Property of:  
 THE TECHNICAL MATERIEL CORPORATION  
 MAMARONECK, NEW YORK

REQ. ITEM	PART NO.	DESCRIPTION	SYMBOL
1	64 CK-117	SCHEMATIC DIAGRAM	
2	63 UG 260/6	PLUG	
1	62 CA-103	CORD ASSY.	
1	61 A-225	BOTTOM COVER ASSY.	
1	60 A-224	TOP COVER, ASSY.	
1	59 5V4G	TUBE, ELECTRON	V-107
1	58 TS-103-U02	SHIELD	
3	57 TS-102-U02	SHIELD	
3	56 TS-102-U03	SHIELD	
1	55 6BE6	TUBE, ELECTRON	V-102
1	54 0A2	TUBE, ELECTRON	V-108
1	53 12AT7	TUBE, ELECTRON	V-104
2	52 6C4	TUBE, ELECTRON	V-101 V-103
2	51 6AQ5	TUBE, ELECTRON	V-105 V-106

THE TECHNICAL MATERIEL CORP.			
MAMARONECK, NEW YORK			
MAIN ASSEMBLY			
SHEET 3 OF 3			
REQ.	ITEM	DESCRIPTION	SYMBOL
1	64	CK-117	
2	63	UG 260/6	
1	62	CA-103	
1	61	A-225	
1	60	A-224	
1	59	5V4G	V-107
1	58	TS-103-U02	
3	57	TS-102-U02	
3	56	TS-102-U03	
1	55	6BE6	V-102
1	54	0A2	V-108
1	53	12AT7	V-104
2	52	6C4	V-101 V-103
2	51	6AQ5	V-105 V-106

LFA	109	10-31-52
MODEL	PROJECT NO.	DATE

SEE SHEET 1 OF 3	12-10-52	1	C.D.D.	
ISSUE	ITEM	CHANGED FROM	DATE	CN. NO. DRAFTS CHECKER ENG. APP.
TOLERANCES				
ALL OTHERS	DEC. DIM. ±	FRAC. DIM. ±	ANGULAR DIM. ±	DRILL, PUNCH, COMMERCIAL STOCK SIZES AND MANUFACTURERS TOLERANCES ARE NOT INCLUDED.

A-183 A