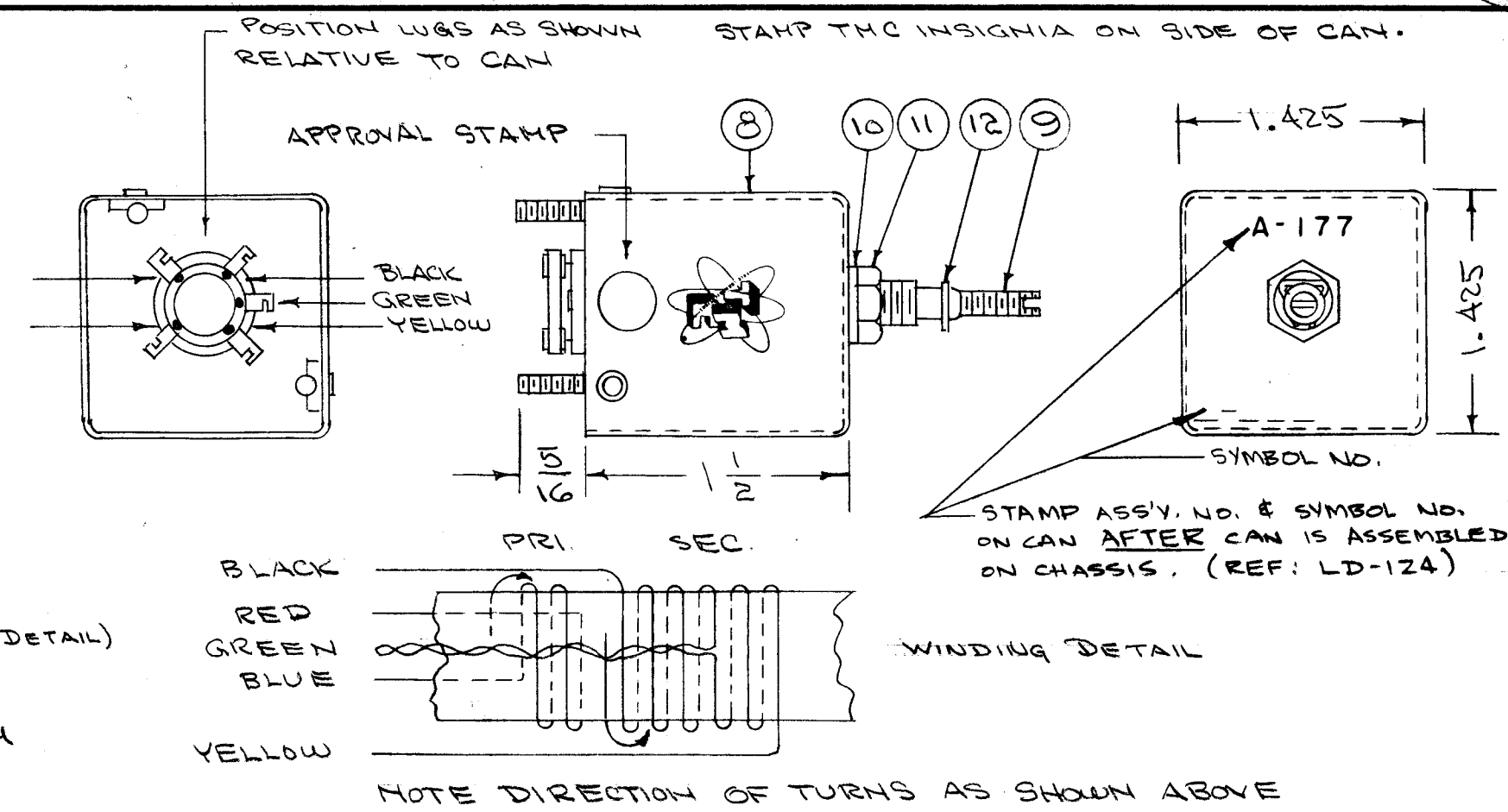
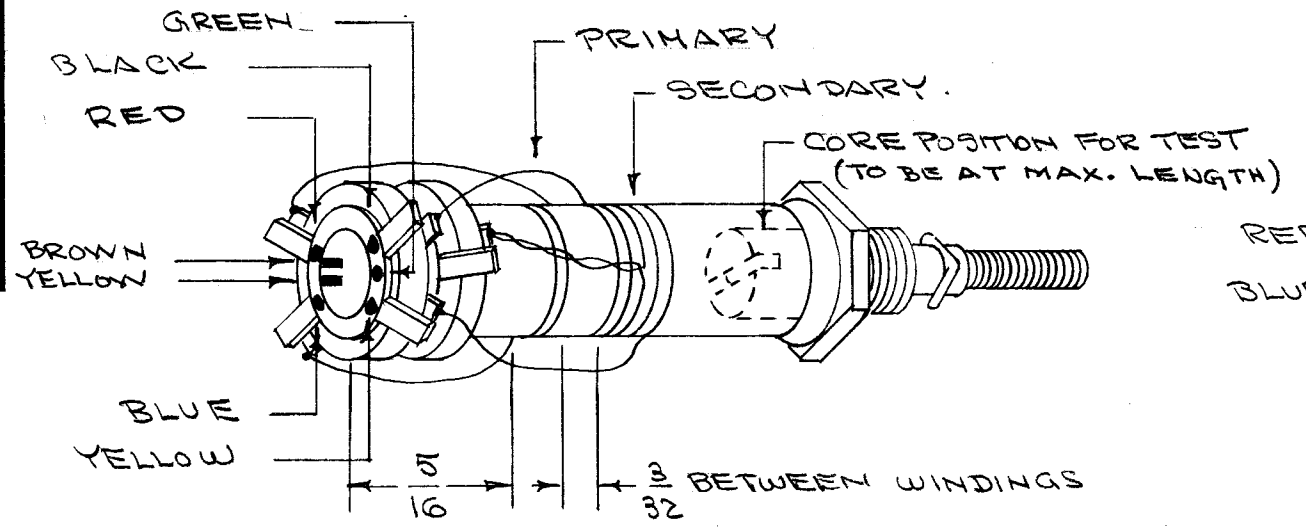


A-177

CEMENT ITEMS 6 & 7 (COLLAR) TO COIL FORM WITH ITEM 4
 COLOR CODE END OF COIL FORM AS BELOW



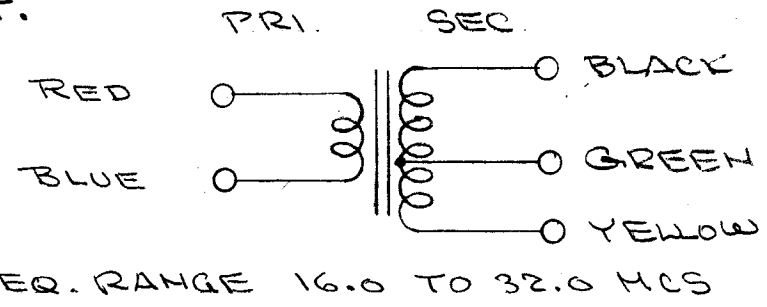
WINDING DATA

- 1- PRIMARY - STARTING AT BLUE LUG, CLOSE WIND 2 1/4 TURNS OF ITEM 2 ENDING AT RED LUG. (SEE DETAIL)
- 2- SECONDARY - STARTING AT BLACK LUG, CLOSE WIND 5 1/4 TURNS OF ITEM 3 ENDING AT YELLOW LUG. BRING OUT TAP TO GREEN LUG 3/8 TURNS FROM START. (SEE DETAIL)
- 3- STAKE LEADS WITH ITEM 4.
- 4- BAKE FOR 1/2 HOUR AT 215° F.
- 5- SATURATE COILS WITH ITEM 5 (Q MAX)
- 6- BAKE FOR 1/2 HOUR AT 215° F
- 7- REPEAT STEPS 5 & 6.
- 8- STRIP, TIN AND SOLDER CONNECT LEADS AS ABOVE.

TEST DATA (SEE ABOVE FOR CORE POSITION)
 TEST LEADS APPROX. 1/4". NO CAN NEEDED FOR TEST.

	PRIMARY		SECONDARY	
	BLUE/RED	BLACK/YELLOW	BLACK/GREEN	BLACK/BLUE
L μh	.236 (.225 - .247)	.58 (.555 - .605)	.277 (.264 - .290)	
Q	75 OR GREATER	150 OR GREATER	100 OR GREATER	
F	25 MCS	25 MCS	25 MCS	

USE BOONTON Q METER 160 A OR EQUIVALENT.



REQ. ITEM	PART NO.	DESCRIPTION	SYMBOL
1	13	BS-100	SOLDER, SOFT
X	12	SP-102	SPRING LOCK P/O CF-114
X	11	NT-102	NUT, HEX P/O CF-114
X	10	LWI 25 LRC	WASHER, LOCK P/O-CF-114
1	9	CI-109-19	CORE
1	8	A-173	CAN ASSY
1	7	TE-146-1	COLLAR & LUGS
1	6	TE-146-4	" " "
X	5	GL-102	Q MAX A-27
X	4	GL-103	CEMENT, DUCCO
X	3	WI-102-6-0	WIRE, # 24 SCE
X	2	WI-107-13	WIRE, #32 DSC
1	1	CF-114-3	COIL FORM

THE TECHNICAL MATERIEL CORP. MAMARONECK, NEW YORK			
TRANSFORMER ASSY. ANTENNA, T800 BAND 8			
MATERIAL		CDP 10/8/56	A.J.J.
TYPE & TEMPER	HEAT TREAT. SPEC.	DRAWN	CHECKED
		P.L.K.	
FINISH & SPEC. NO.		ELEC. DES. APP.	MECH. DES. APP.
		A-177	B

ISSUE ITEM	CHANGED FROM	DATE	CH. NO.	DRAFTS	CHECKER	ENG. APP.
B 1	COMPLETE REVISION SUPERCEDES A-176	10/8/56	2		P.L.K.	A.J.J.

1	FFRD-8	104	A-327	10-8-56
REQ. PER UNIT	MODEL	PROJECT NO.	ASS'Y. NO.	DATE
	USED ON			

DEC. DIM. ±
 FRAC. DIM. ±
 ANGULAR DIM. ±

SCALE:
 MAXIMUM ALLOWABLE TOLERANCES HAVE BEEN DETERMINED AND ANY DEVIATIONS WILL BE CAUSE FOR REJECTION.
 REMOVE ALL BURRS AND SHARP EDGES