

IF IT IS FOUND DESIRABLE TO CHANGE ANY TOLERANCE OR OTHER DETAIL SPECIFIED ON THIS DRAWING NOTIFY THE PURCHASER PROMPTLY.

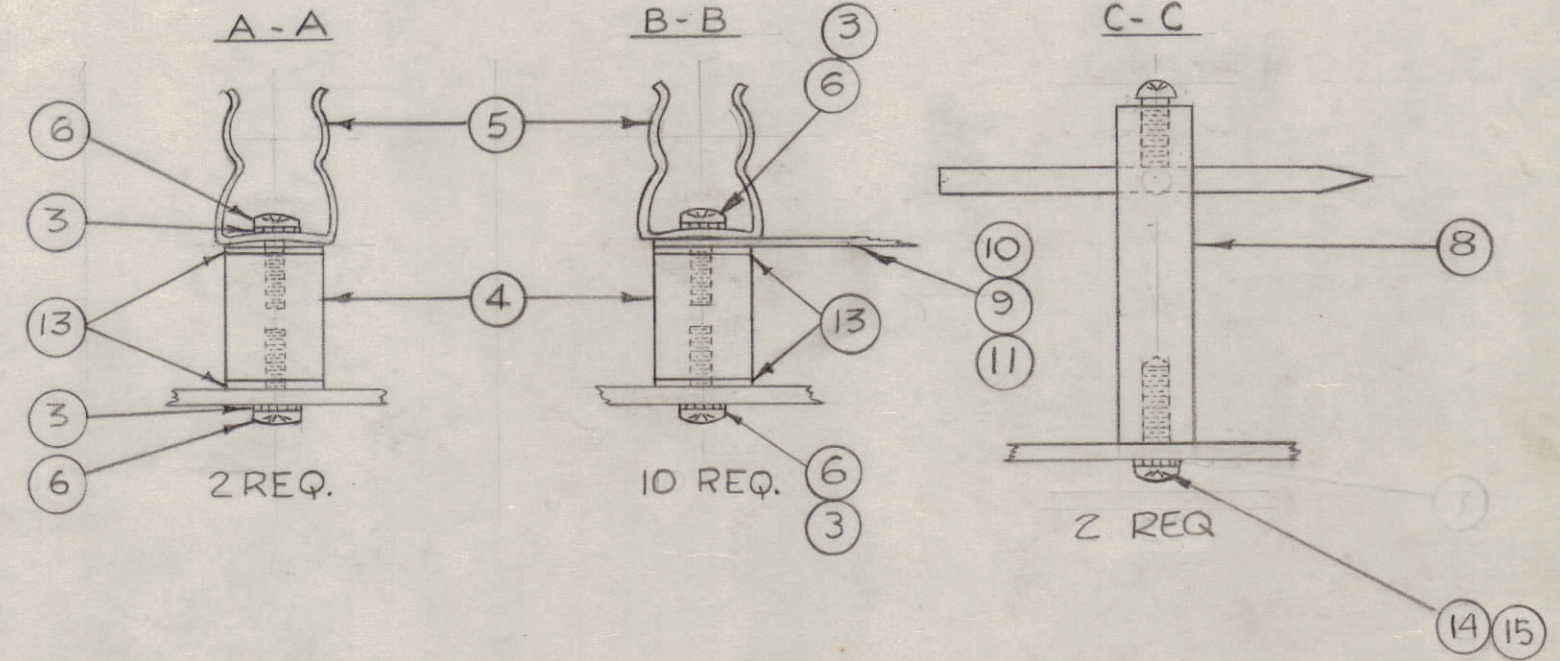
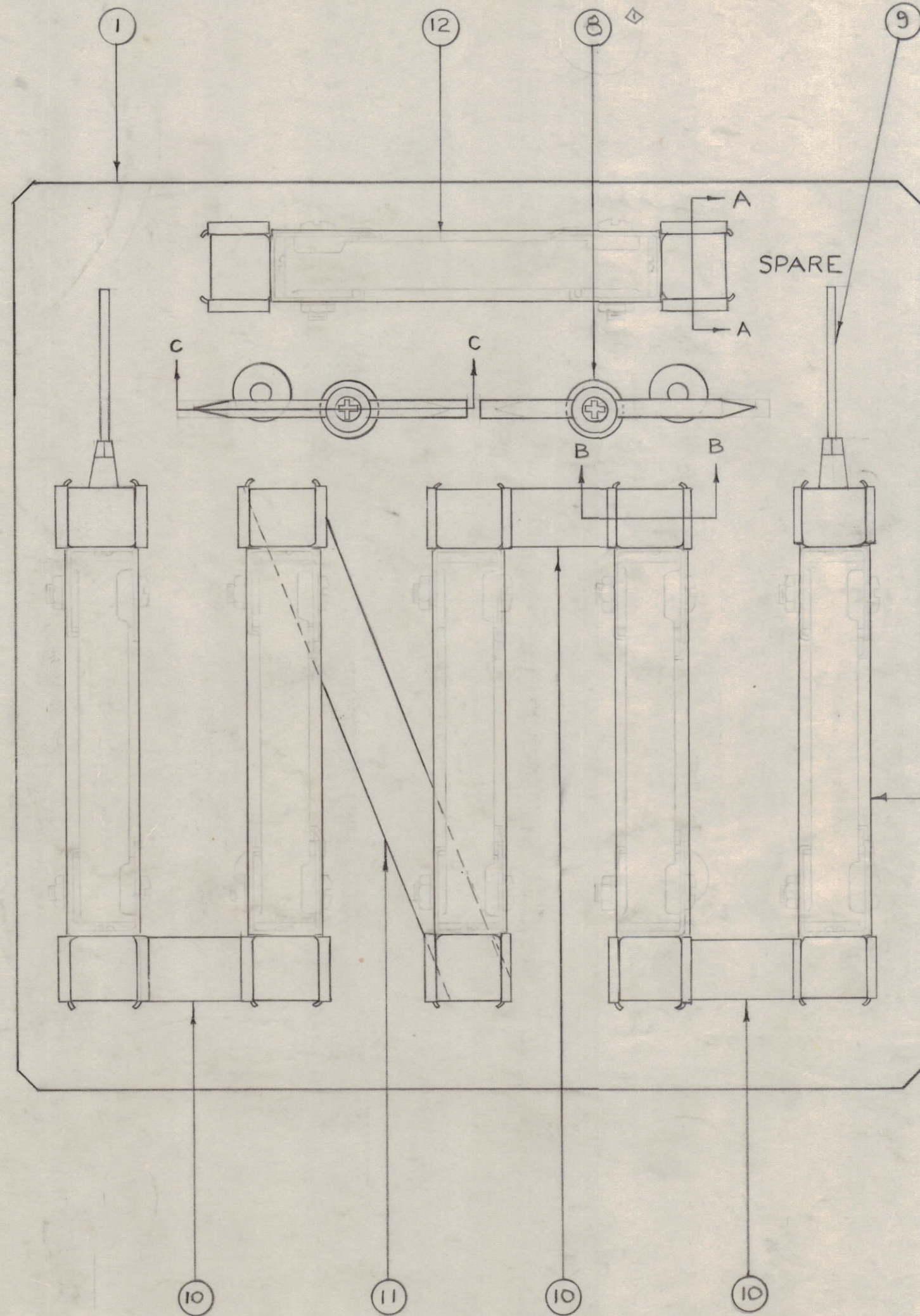
MAXIMUM ALLOWABLE TOLERANCES HAVE BEEN DETERMINED AND DEVIATIONS WILL BE CAUSE FOR REJECTION. REMOVE ALL BURRS AND SHARP EDGES

RELEASED

NOTICE TO PERSONS RECEIVING THIS DRAWING

THE TECHNICAL MATERIEL CORPORATION claims proprietary right in the material disclosed hereon. This drawing is issued in confidence for engineering information only and may not be reproduced or used to manufacture anything shown hereon without permission from THE TECHNICAL MATERIEL CORPORATION to the user. This drawing is loaned for mutual assistance and is subject to recall at any time.

Property of:  
THE TECHNICAL MATERIEL CORPORATION  
MAMARONECK, NEW YORK



A-172 L

NOTE:  
RTB IS SUPERSEDED BY RTB-1.

TMC MODEL NO.	REV.	DATE
RTB	1	8-24-55
RTB-1	1	10-4-52

2	15	LWEO6MRN	LOCKWASHER, EXT
2	14	SCBP0632BNG	SCREW, MACHINE
24	13	WA-109-46	WASHER, FIBRE
6	12	A-1070-140	RESISTOR, ASSEMBLY
1	11	MS-144-2	LINK
3	10	MS-144-1	LINK
2	9	A-1563-2	LEAD, ASSEMBLY
2	8	A-170	LIGHTNING ARRESTOR
	7	DELETED	
24	6	SCBP0832BNG	SCREW, MACHINE
12	5	FC-101	CLIP, FUSE
12	4	NS3W0206	INSULATOR, STAND-OFF
24	3	LWEO8MRN	WASHER, LOCK
	2	DELETED	
1	1	MS-1289 LD-1003	MOUNTING PLATE
REQ.	ITEM	PART NO.	DESCRIPTION
			THE TECHNICAL MATERIEL CORP. MAMARONECK, NEW YORK
			RESISTOR BOARD ASSEMBLY
			TYPE & TEMPER
			HEAT TREAT. SPEC.
			FINISH & SPEC. NO.
			DRAWN: <i>L. J. ...</i> ELEC. DES. APP. <i>...</i> MECH. DES. APP. <i>...</i> CHECKED: <i>...</i> FINAL APPROVAL: <i>...</i>
			A-172 L

ISSUE	ITEM	CHANGED FROM	DATE	CN. NO.	DRAFTS	CHECKER	ENG. APP.
L		ITEM 12 CHG.	8/24/55	19492	GE	<i>L. J. ...</i>	<i>...</i>
K		MODEL NO. CHART DELE. EXCEPT RTB-101 G/M: IT (2) WAS SEE CHART-RESISTOR FIXED	12/21/54	13040	RZ	<i>R. Z. ...</i>	<i>...</i>
TOLERANCES							
SCALE: FULL SIZE							
ALL OTHERS				DEC. DIM. ± FRAC. DIM. ± ANGULAR DIM. ±			
				DRILL PUNCH, COMMERCIAL STOCK SIZES AND MANUFACTURERS TOLERANCES ARE NOT INCLUDED.			

RTB-1		A-168	8-24-55
RTB	158	A-168	10-4-52
MODEL	PROJECT NO.	ASS'Y. NO.	DATE
USED ON			