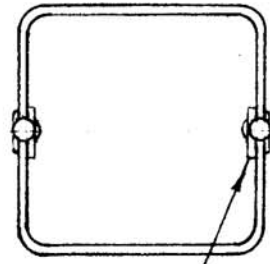
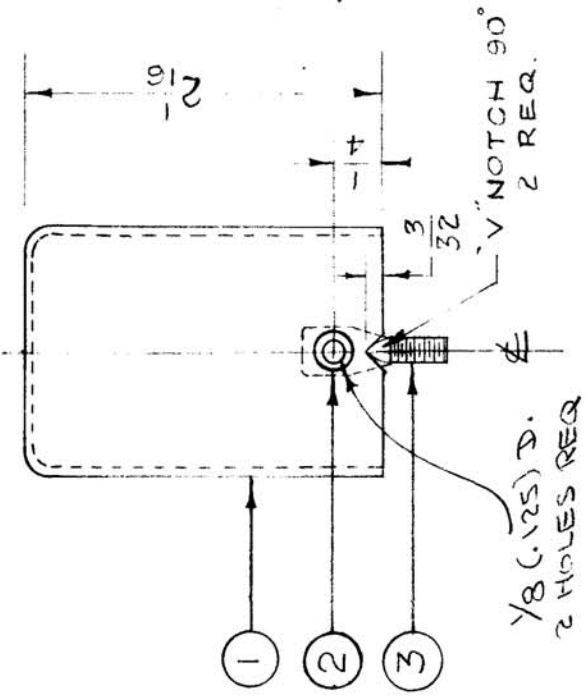


IF IT IS FOUND DESIRABLE TO CHANGE ANY TOLERANCE OR OTHER DETAIL SPECIFIED ON THIS DRAWING NOTIFY THE PURCHASER PROMPTLY.

MAXIMUM ALL WABLE TOLERANCES HAVE BEEN DETERMINED AND DEVIATIONS WILL BE CAUSE FOR REJECTION. REMOVE ALL BURRS AND SHARP EDGES



SPADE BOLT ON INSIDE

DETAIL OF SPADE BOLT

EYELET ROLLED OVER ON OUTSIDE.  
MOUNT IN THIS POSITION

A 163		C	
USED ON			
REQ. PER UNIT	MODEL	PROJECT NO.	ASSY. NO.
1	FFR-2	104	A-164
1	LFA	109	A-203
1	A-1507	MER-3	A-1506
			DATE
			9-29-52
			10-24-52
			4-10-58

REQ. ITEM	PART NO.	DESCRIPTION	SYMBOL
2	3 SC-107-1	BOLT SPADE, OFFSET TYPE	
2	2 EY100-1	EYELET	
1	1 FP-108-1	CAN (MODIFIED AS SHOWN)	
STOCK SIZE		CAN	
MATERIAL		ASSEMBLY	
TYPE & TEMPER		G.T.O	
HEAT TREAT. SPEC.		ELEC. DES. APP. MECH. DES. APP.	
FINISH & SPEC. NO.		DRAWN CHECKED	

THE TECHNICAL MATERIEL CORP.  
MAMARONECK, NEW YORK

ISSUE ITEM	CHANGED FROM	DATE	CN. NO.	DRAFTS CHECKER	ENG. APP.
C 1	Model per Deleted	10/17/56	3	JAC	JAC
B 1	MOVE SIZE	9/11/56	2	JAC	JAC
A 2	ITEM 1 WAS MS-143	1-30-56	1	JAC	JAC
A 1	DIMENSIONS ADDED				

TOLERANCES  
DEC. DIM. ± .005  
FRAC. DIM. ± .01  
OTHERS AN ULAR DIM. ± .04

SCALE FULL SIZE

DRILL, PUNCH, COMMERCIAL STOCK SIZES AND MANUFACTURERS TOLERANCES ARE NOT INCLUDED.

A-163		C	
-------	--	---	--