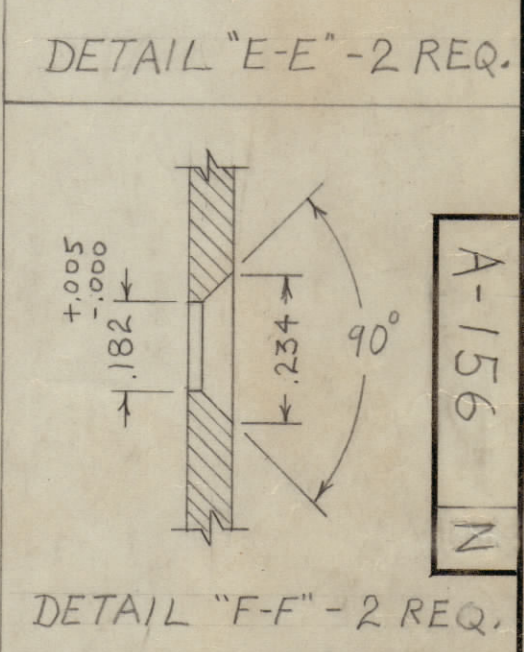
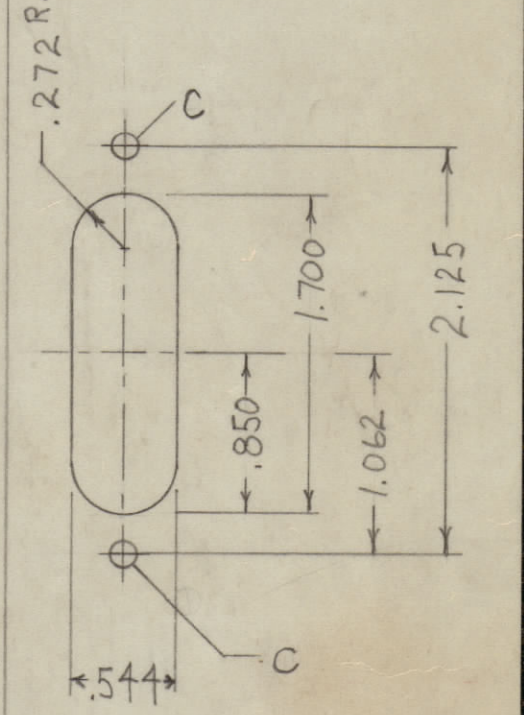
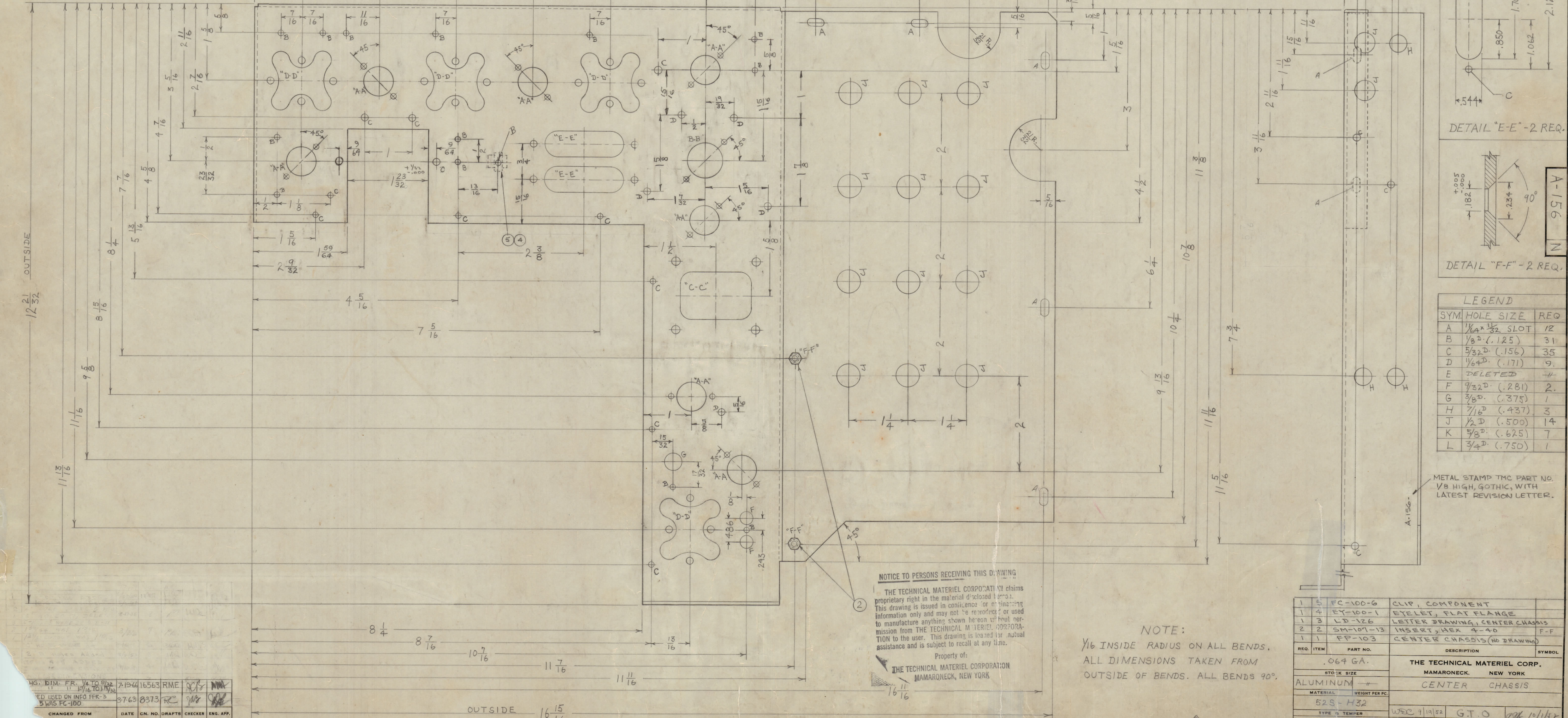
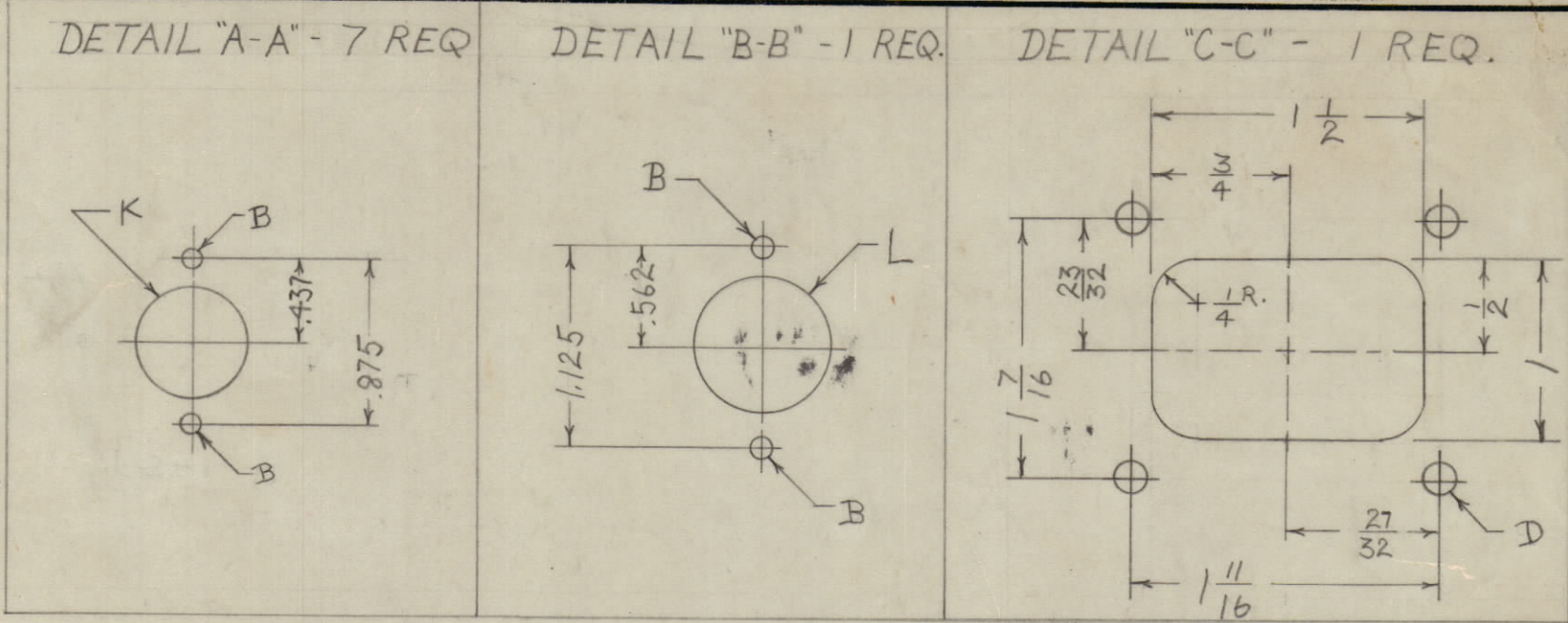
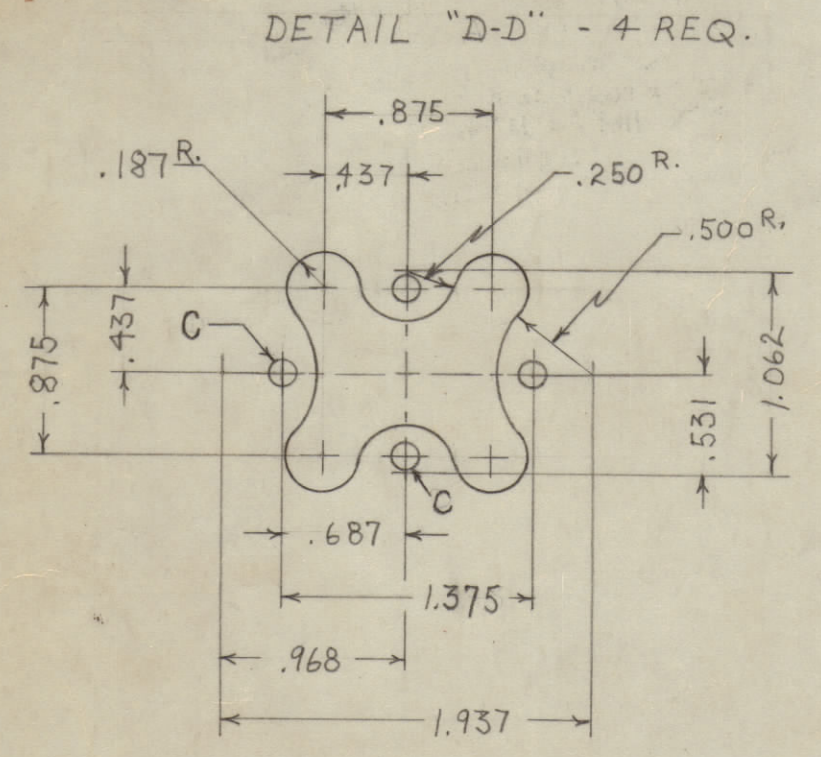


IF IT IS FOUND DESIRABLE TO CHANGE ANY TOLERANCE OR OTHER DETAIL SPECIFIED ON THIS DRAWING NOTIFY THE PURCHASER PROMPTLY.
 MAXIMUM ALLOWABLE TOLERANCES HAVE BEEN DETERMINED AND DEVIATIONS WILL BE CAUSE FOR REJECTION. REMOVE ALL BURRS AND SHARP EDGES.

RELEASED



LEGEND

SYM	HOLE SIZE	REQ
A	1/64 x 1/32 SLOT	12
B	1/32 (.125)	31
C	5/32 D (.156)	35
D	1/64 D (.171)	9
E	DELETED	-
F	9/32 D (.281)	2
G	3/64 D (.437)	1
H	7/16 D (.437)	3
J	1/2 D (.500)	14
K	5/8 D (.625)	7
L	3/4 D (.750)	1

METAL STAMP TMC PART NO. V8 HIGH, GOTHIC, WITH LATEST REVISION LETTER.

NOTICE TO PERSONS RECEIVING THIS DRAWING

THE TECHNICAL MATERIEL CORPORATION claims proprietary right in the material disclosed hereon. This drawing is issued in confidence and engineering information only and may not be reprinted or used to manufacture anything shown hereon without permission from THE TECHNICAL MATERIEL CORPORATION to the user. This drawing is loaned for mutual assistance and is subject to recall at any time.

Property of:
 THE TECHNICAL MATERIEL CORPORATION
 MAMARONECK, NEW YORK

NOTE:
 1/16 INSIDE RADIUS ON ALL BENDS.
 ALL DIMENSIONS TAKEN FROM OUTSIDE OF BENDS. ALL BENDS 90°.

CHANGED FROM	DATE	CN. NO.	DRAFTS	CHECKER	ENG. APP.
1.005					
±.005					
±.010					
±.020					

FFR-2#3	104	A-258	9-19-52
MODEL	PROJECT NO.	ASSY. NO.	DATE
USED ON			

REQ. ITEM	PART NO.	DESCRIPTION	SYMBOL
1	5	FC-100-6	CLIP, COMPONENT
1	4	EY-100-1	EYELET, FLAT FLANGE
1	3	LD-126	LETTER DRAWING, CENTER CHASSIS
2	2	SM-107-13	INSERT, WAX 4-40
1	1	FP-103	CENTER CHASSIS (NO DRAWING)
.064 GA.			
STOCK SIZE			
ALUMINUM #			
MATERIAL WEIGHT PER PC.			
529-H32			
TYPE & TEMPER			
HEAT TREAT. SPEC.			
FINISH & SPEC. NO.			

WRC 9/19/52	G.T.O.	006 10/1/52
DRAWN	ELEC. DES. APP.	MECH. DES. APP.
006 10/1/52	CHECKED	FINAL APPROVAL
A-156 N		