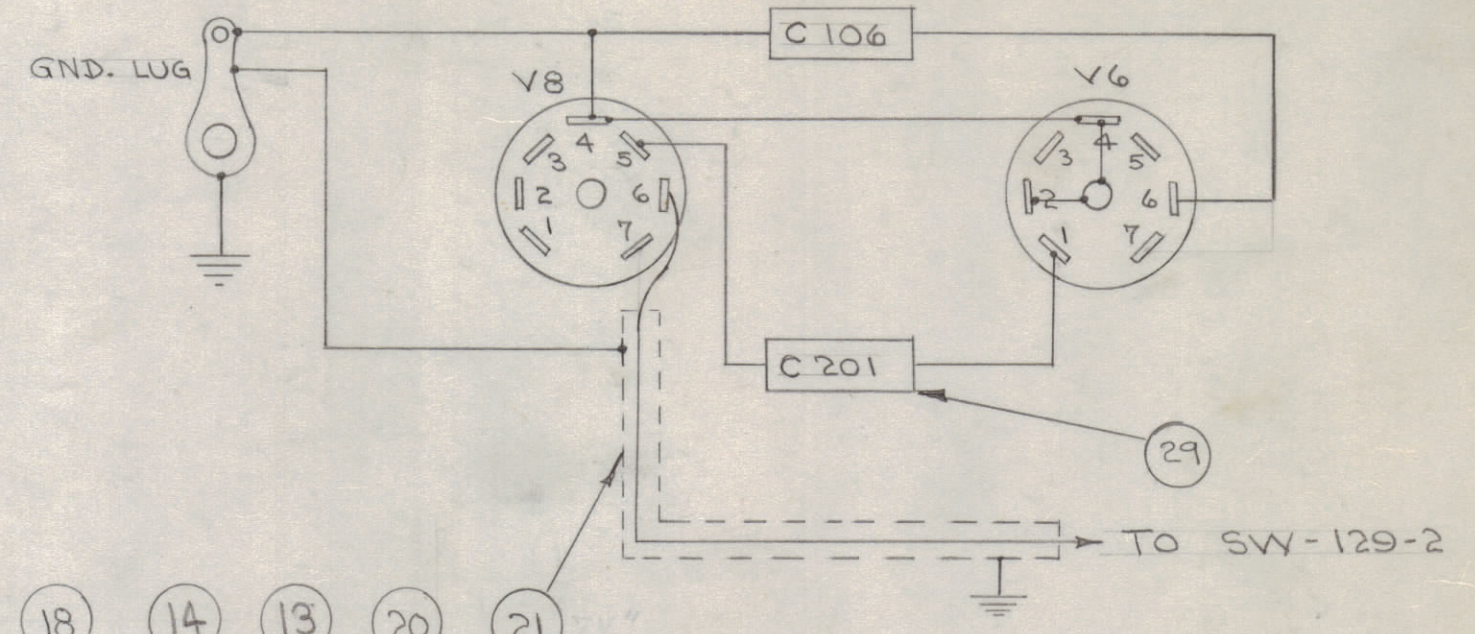
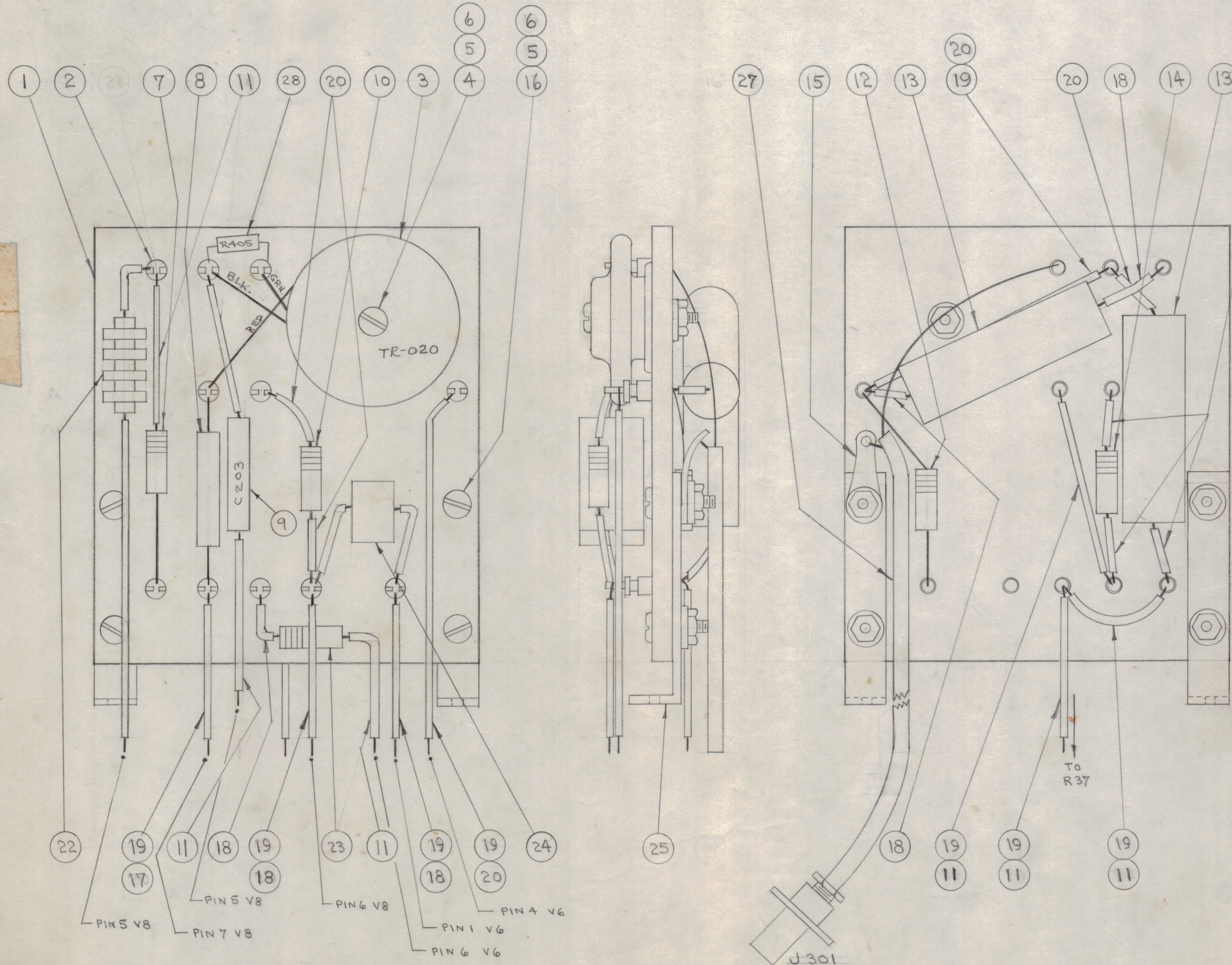


IF IT IS FOUND DESIRABLE TO CHANGE ANY TOLERANCE OR OTHER DETAIL SPECIFIED ON THIS DRAWING NOTIFY THE PURCHASER PROMPTLY.

MAXIMUM ALLOWABLE TOLERANCES HAVE BEEN DETERMINED AND DEVIATIONS WILL BE CAUSE FOR REJECTION. REMOVE ALL BURRS AND SHARP EDGES

NOTE: 1. ITEMS 22 23 24 25 NOT SUPPLIED. SALVAGE FROM OLD UNIT.

2. PART NUMBERS ON ITEMS 22 23 24 25 ARE HAMMARLUND NUMBERS.



1	29	CM20A 101K	CAPACITOR, FIXED 100µmf	C201
1	28	RC20GF102K	RESISTOR, FIXED 1000 Ω	R405
1	27	CA-171	CABLE ASSEMBLY	
1	26	MS-151	MODIFICATION OF SHIELD CAN (SALVAGE)	
2	25	//	BRACKET (SALVAGE)	
1	24	31130-1	3.5 MC. CRYSTAL (SALVAGE)	
1	23	19310-179BF	RESISTOR, FIXED 20K (SALVAGE)	R40
1	22	15612-G1	CHOKE (SALVAGE)	
1	21	CA-172	CABLE ASSY.	

A-155 D

6"	20	PX-104-1-.064	INSULATION, SLEEVING	
19 3/4"	19	WL-100-7	WIRE, BUSS	
5 1/2"	18	PX-104-A-.034	INSULATION, SLEEVING	
2"	17	PX-104-2-.034	INSULATION, SLEEVING	
4	16	SCRS0440SN4	SCREW, MACHINE	
1	15	TE-104-1	TERMINAL, LOCKING	
1	14	RC20GF681K	RESISTOR, FIXED	R202
2	13	CN-100-3	CAPACITOR, FIXED	C204 C205
1	12	RC20GF223K	RESISTOR, FIXED	R204
8 1/4"	11	PX-104-3-.034	INSULATION, SLEEVING	
1	10	RC20GF104K	RESISTOR, FIXED	R203
1	9	CM20A180J	CAPACITOR, FIXED, MICA	C203
1	8	CM20A102K	CAPACITOR, FIXED, MICA	C202
1	7	RC20GF563K	RESISTOR, FIXED	R201
5	6	NTH0440 SC8	NUT, HEXAGON	
5	5	LW104 MRC	LOCKWASHER, INT. TOOTH	
1	4	SCRS0440SN12	SCREW, MACHINE	
1	3	TR-020	TRANSFORMER	T-201
11	2	TE-109-3	LUG, SPLIT TERMINAL	
1	1	PX-110	BOARD, TERMINAL	

D	1	ITEM 8 WAS CM30A102K	5/12/54	4	JAL	C.D.D.	ONS
C	1	ITEM 9 WAS 050 I	9-10-53	3	J.G.	C.D.D.	JHC
B	1	BLK. WAS GRN. GRN. WAS BLK	8/24/53	2	C.D.D.		ONS
A	1	C28-C29 Added	7/23/52	1	JAL		ONS

ISSUE	ITEM	CHANGED FROM	DATE	CN. NO.	DRAFTS	CHECKER	ENG. APP.
TOLERANCES							
SCALE:							
ALL OTHERS	DEC. DIM. ±	DRILL, PUNCH, COMMERCIAL STOCK SIZES AND MANUFACTURERS TOLERANCES ARE NOT INCLUDED.					
	FRAC. DIM. ±						
	ANGULAR DIM. ±						

DMK-4	140	A-256	9-20-52
MODEL	PROJECT NO.	ASSY. NO.	DATE
USED ON			

REQ. ITEM	PART NO.	DESCRIPTION	SYMBOL
THE TECHNICAL MATERIEL CORP.			
MAMARONECK, NEW YORK			
3.5 MC OSC. ASSEMBLY			
STOCK SIZE			
MATERIAL		WEIGHT PER PC.	
TYPE & TEMPER			
DRAWN		ELEC. DES. APP.	MECH. DES. APP.
HEAT TREAT. SPEC.		CHECKED	FINAL APPROVAL
FINISH & SPEC. NO.		A-155 D	