

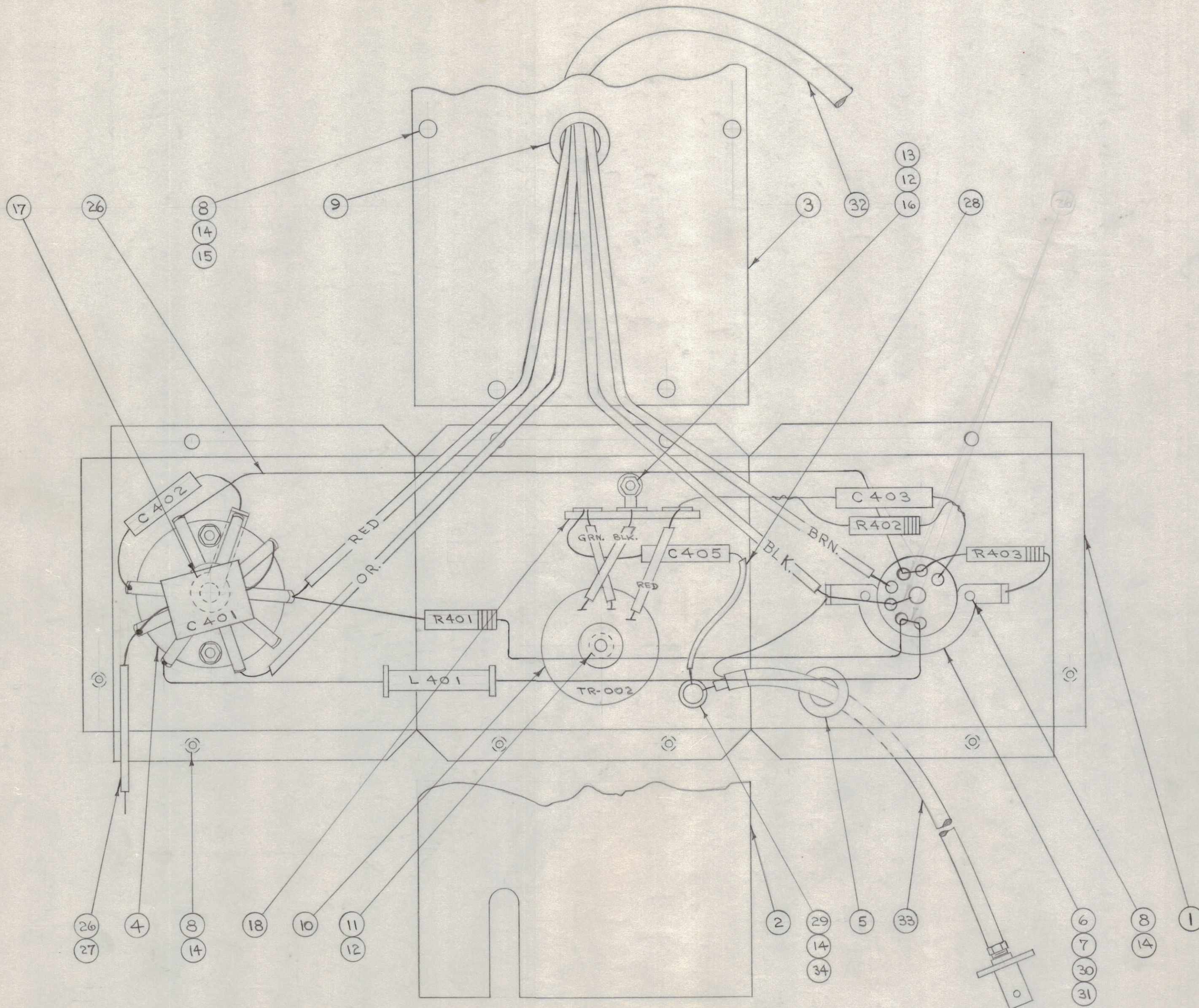
IF IT IS FOUND DESIRABLE TO CHANGE ANY TOLERANCE OR OTHER DETAIL SPECIFIED ON THIS DRAWING NOTIFY THE PURCHASER PROMPTLY.

MAXIMUM ALLOWABLE TOLERANCES HAVE BEEN DETERMINED AND DEVIATIONS WILL BE CAUSE FOR REJECTION. REMOVE ALL BURRS AND SHARP EDGES

NOTICE TO PERSONS RECEIVING THIS DRAWING

THE TECHNICAL MATERIEL CORPORATION claims proprietary right in the material disclosed hereon. This drawing is issued in confidence for engineering information only and may not be reproduced or used to manufacture anything shown hereon without permission from THE TECHNICAL MATERIEL CORPORATION to the user. This drawing is loaned for mutual assistance and is subject to recall at any time.

Property of:
THE TECHNICAL MATERIEL CORPORATION
MAMARONECK, NEW YORK



1	34	TE-102-2	TERMINAL, TURRET	
1	33	CA-170	CABLE ASSY., R.F.	
1	32	CA-118	CABLE	
1	31	TS-102-U01	SHIELD, TUBE	
1	30	6 J 6	TUBE, ELECTRON	
1	29	SCBS0440BC3	SCREW, MACHINE	
1"	28	PX-104-1-.034	INSULATION, SLEEVING	
1"	27	PX-104-4-.034	INSULATION, SLEEVING	
5/2"	26	WL-100-7	WIRE, BUSS BAR	
1	25	CL-103	CHOKE, RF	L401
1	24	RC30GF182K	RESISTOR, FIXED	R401
1	23	RC20GF104K	RESISTOR, FIXED	R403
1	22	RC20GF681K	RESISTOR, FIXED	R402

A-154 C

1	21	CN-190-1	CAPACITOR, FIXED	C405
2	20	CM20A102K	CAPACITOR, FIXED	C402
1	19	CM20A050K	CAPACITOR, FIXED	C403
1	18	TM-101	TERMINAL STRIP	C401
1	17	TE-111-2	LUG, SOLDER	
1	16	SCBS0632BC4	SCREW, MACHINE	
4	15	NTH0446BC8	NUT, HEX.	
13	14	LWS04MRC	LOCKWASHER, SPLIT	
1	13	NTH0632BC8	NUT, HEX.	
2	12	LWS06MRC	LOCKWASHER, SPLIT	
1	11	SCBS0632BC8	SCREW, MACHINE	
1	10	TR-002	TRANSFORMER	T401
1	9	EY-102-3	GROMMET, ELASTIC	
12	8	SCBS0440B4	SCREW, MACHINE	
1	7	NT-101-4	NUT, STRAP	
1	6	TS-102-P01	SOCKET, MIN. 7 PIN	
1	5	EY-102-12	GROMMET, ELASTIC	
1	4	SW-104	SWITCH, ROTARY	S-401
1	3	MS-124	BOTTOM	
1	2	MS-123	COVER	
1	1	MS-122	CHASSIS	

REQ. ITEM	PART NO.	DESCRIPTION	SYMBOL
#			
STOCK SIZE		THE TECHNICAL MATERIEL CORP. MAMARONECK, NEW YORK	
#		H.F.O. CHASSIS ASSEMBLY.	
MATERIAL		WEIGHT PER PC.	
#		#	
TYPE & TEMPER		C.D.D. 9-A-52	
#		DRAWN	
HEAT TREAT. SPEC.		ELEC. DES. APP.	
#		MECH. DES. APP.	
#		CHECKED	
#		FINAL APPROVAL	
FINISH & SPEC. NO.		A-154 C	

C	1	ITEM 26 Moved	5/12/54	1	FILE	CSB	APP
B	1	ITEM 20 WAS CM30A102K	7/1/53	1	FILE	CSB	APP
A	1	ITEM 22 WAS RC20GF680K	7/13/53	1	FILE	CSB	APP
ISSUE	ITEM	CHANGED FROM	DATE	CN. NO.	DRAFTS	CHECKER	ENG. APP.
TOLERANCES			SCALE: #				
ALL OTHERS			DRILL, PUNCH, COMMERCIAL STOCK SIZES AND MANUFACTURERS TOLERANCES ARE NOT INCLUDED.				

DMK-4	140	A-256	9-4-52
MODEL	PROJECT NO.	ASS'Y. NO.	DATE
USED ON			