

IF IT IS FOUND DESIRABLE TO CHANGE ANY TOLERANCE OR OTHER DETAIL SPECIFIED ON THIS DRAWING NOTIFY THE PURCHASER PROMPTLY.

MAXIMUM ALLOWABLE TOLERANCES HAVE BEEN DETERMINED AND DEVIATIONS WILL BE CAUSE FOR REJECTION. REMOVE ALL BURRS AND SHARP EDGES

RELEASED

A 149

USED ON

MODEL

PROJECT NO.

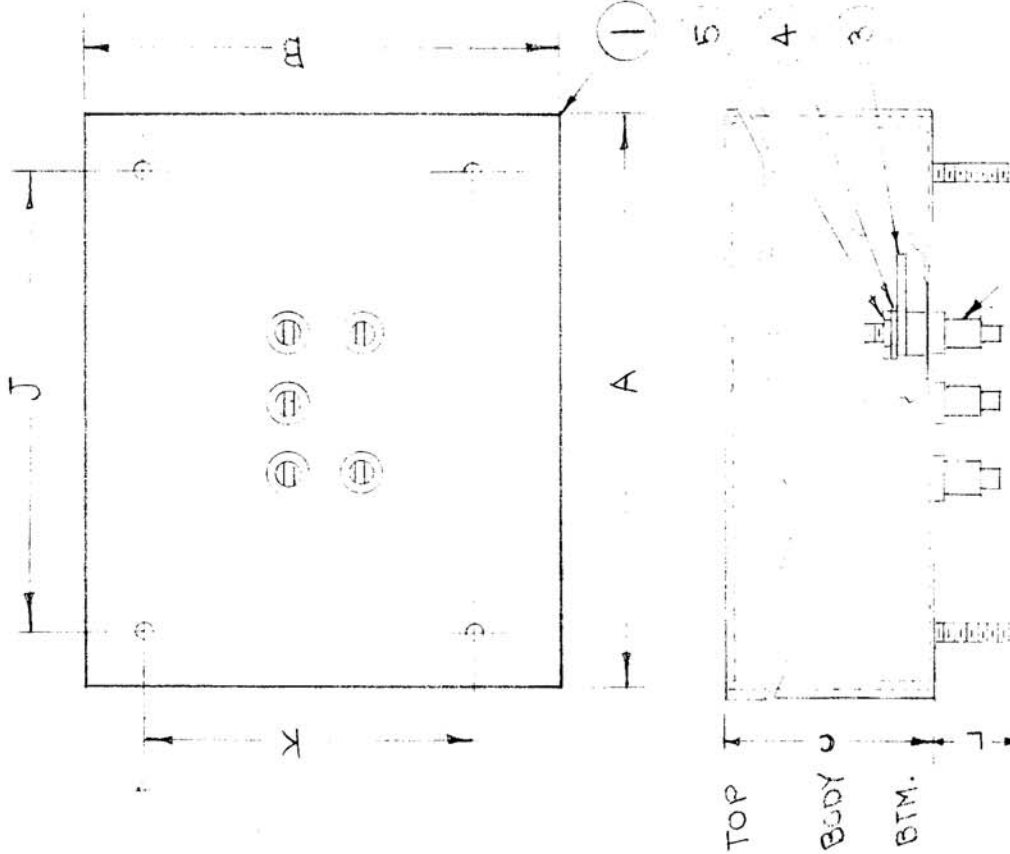
ASSY. NO.

DATE

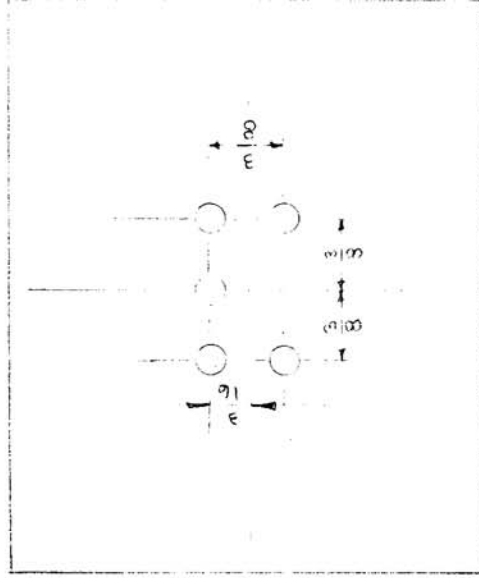
TR 019 109

A-149

10-21-54



NOTE:
 1-LUGS SHALL BE ORIENTATED RAD- IALLY WITH SOLDER HOLE ON OUTSIDE (ITEM 3)
 2- EACH ASSEMBLY CONSISTS OF THREE PARTS, BOTTOM, BODY AND TOP, COMPLETE WITH ASSEMBLED TERM- INALS.



BOTTOM DRILLING PLAN

- 5 5 NTH0440 BRG NUT, HEXAGON
- 5 4 LWS04 MRK LOCKWASHER, SPLIT
- 5 3 TE-110-2 LUG, SOLDER
- 5 2 TE-101-1 BUSHING, SLOTTED HEAD
- 1 1 BX-100-125 CASE, TRANSFORMER

REQ. ITEM	PART NO.	DESCRIPTION	SYMBOL
THE TECHNICAL MATERIEL CORP. MAMARONECK, NEW YORK			
CASE AND TERMINALS			
SUB ASSEMBLY			
CUG-5-1852		A. J. J.	MECH. DES. APP.
DRAWN		M.H.S.	ELEC. DES. APP.
TYPE & TEMPER		CHECKED	
HEAT TREAT. SPEC.		FINAL APPROVAL	
FINISH & SPEC. NO.		A-149	

ISSUE ITEM	CHANGED FROM	DATE	CN. NO.	DRAFTS	CHECKER	ENG. APP.
SCALE						
TOLERANCES						
ALL DEC. DIM. \pm	DRILL, PUNCH, COMMERCIAL STOCK					
OTHERS FRAC. DIM. \pm	SIZES AND MANUFACTURERS					
ANGULAR DIM. \pm	TOLERANCES ARE NOT INCLUDED.					