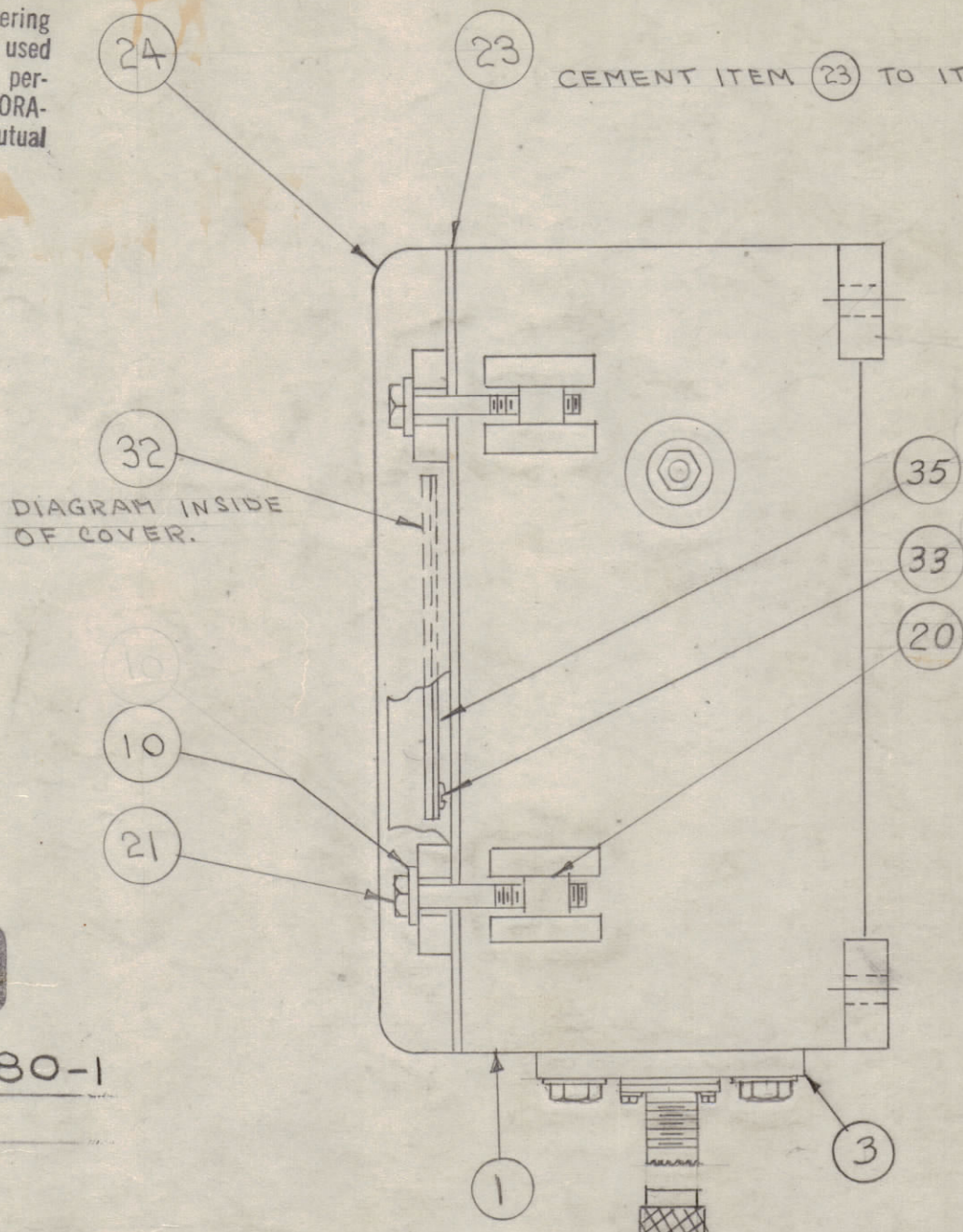
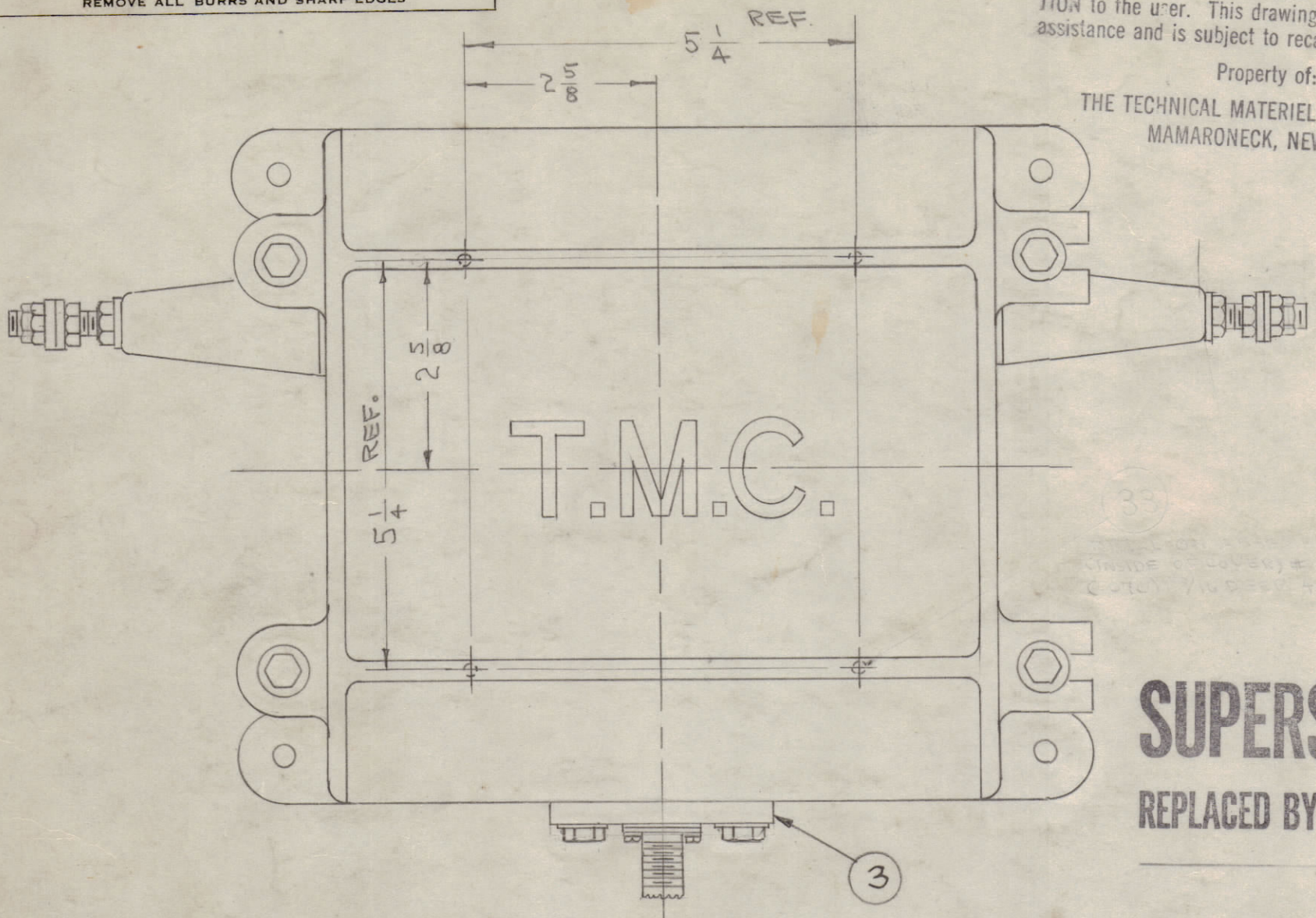


IF IT IS FOUND DESIRABLE TO CHANGE ANY TOLERANCE OR OTHER DETAIL SPECIFIED ON THIS DRAWING NOTIFY THE PURCHASER PROMPTLY.

MAXIMUM ALLOWABLE TOLERANCES HAVE BEEN DETERMINED AND DEVIATIONS WILL BE CAUSE FOR REJECTION. REMOVE ALL BURRS AND SHARP EDGES

PROPERTY RECEIVING THIS DRAWING
 THE TECHNICAL MATERIEL CORPORATION claims proprietary right in the material disclosed hereon. This drawing is issued in confidence for engineering information only and may not be reproduced or used to manufacture anything shown hereon without permission from THE TECHNICAL MATERIEL CORPORATION to the user. This drawing is loaned for mutual assistance and is subject to recall at any time.

Property of:
 THE TECHNICAL MATERIEL CORPORATION,
 MAMARONECK, NEW YORK

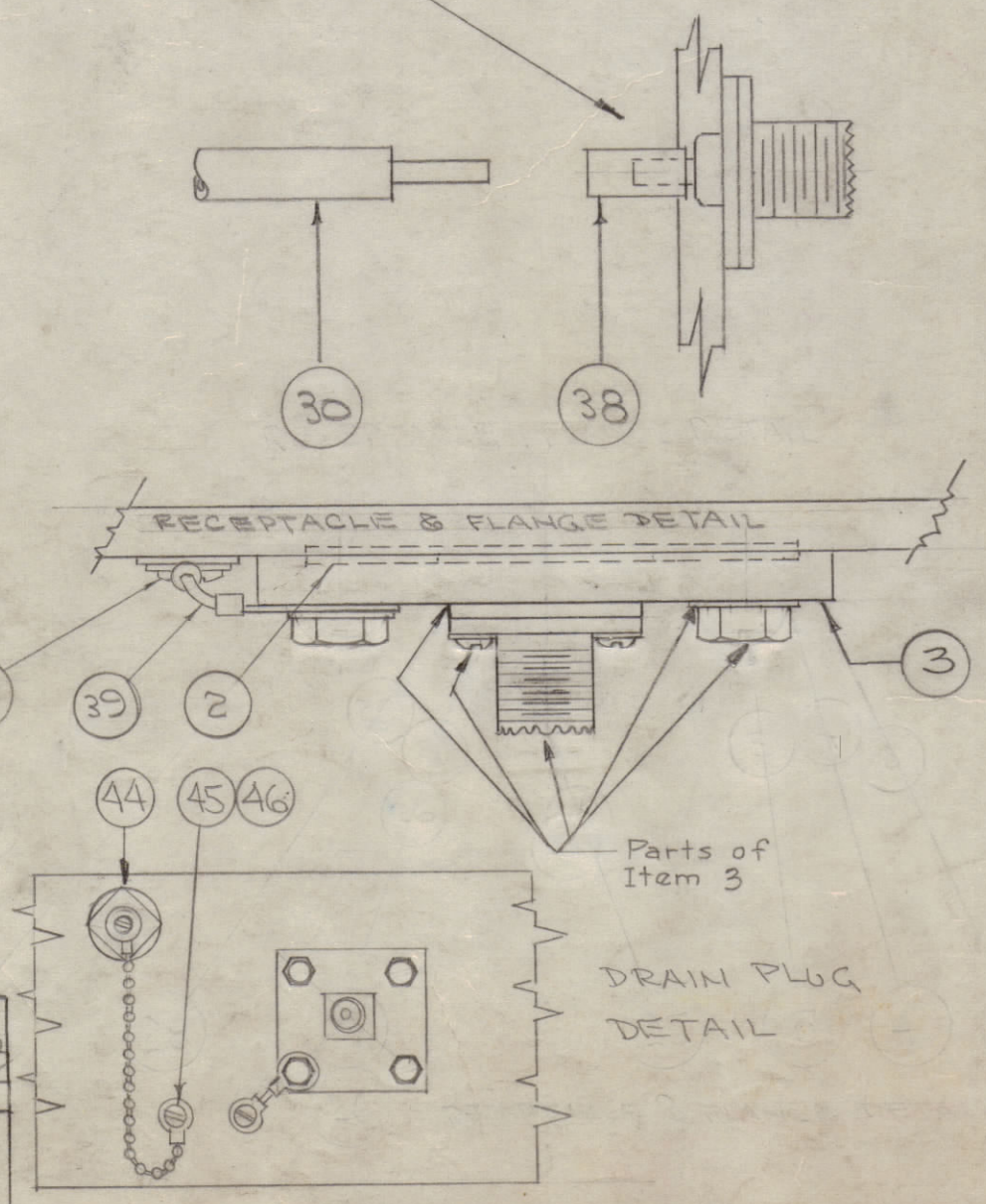
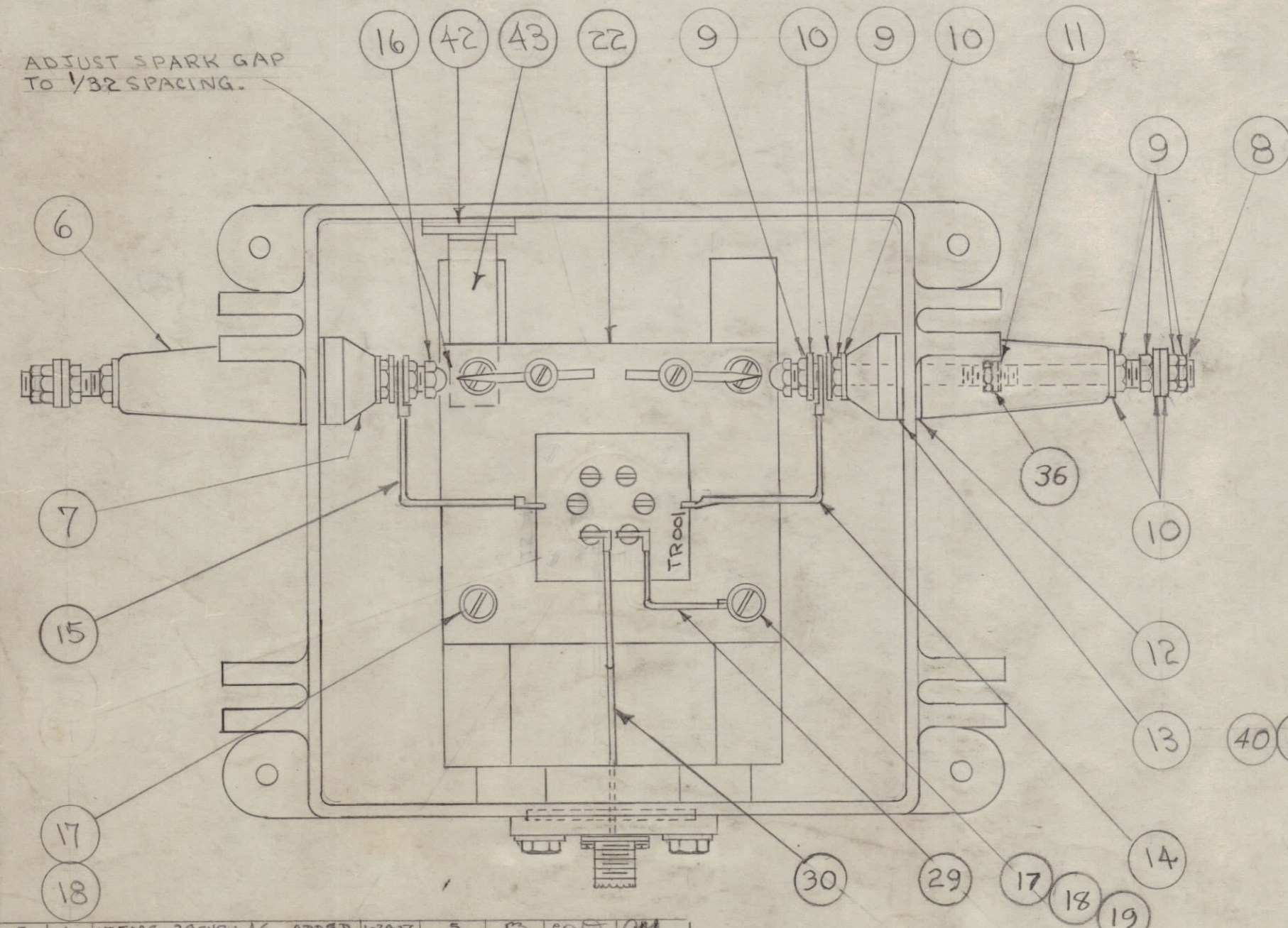


SUPERSEDED
 REPLACED BY A-3080-1

NOTE: SOLDER ALL ELECTRICAL CONNECTIONS WITH ITEM 31

P/O ITEM 3 SUPPLIED AS LOOSE ITEM (PL-259 A/U)

SLIP FERRULE OVER TIP OF JACK AS SHOWN. SLIDE CONNECTOR INTO FERRULE AND SOLDER IN PLACE



CEMENT ITEM 23 TO ITEM 24 WITH ITEM 34

1	46	LWE06MRN	WASHER, LOCK
1	45	SCBS0632BN3	SCREW, MACHINE
1	44	A-1291	DRAIN PLUG ASSY.
1	43	MS-933	HOLDER, DESSICANT
2	42	AD-101-1/6	DESSICANT
1	41	SCBS1032554	SCREW, MACHINE
1	40	LWE10MSS	LOCKWASHER
1	39	A-1164	GROUND, STRAP CASE
1	38	CU-101-1	FERRULE
#	#	#	DELETED
2	36	FW25LRN	WASHER, FLAT
1	35	PX-115	GUARD
X	34	GL-101-2	CEMENT, PLOBOND
4	33	SC-102-1	SCREW, THREAD CUTTING
1	32	LD-111	SCHEMATIC DIAGRAM
X	31	BS-100	SOLDER, SOFT
1	30	A-876	CONNECTOR, COAX
1	29	FP-132	" GND.
#	#	#	DELETED
#	#	#	DELETED
#	#	#	DELETED
#	#	#	DELETED
1	24	PM-105	COVER
1	23	GA-103	GASKET, COVER
1	22	A-105	TRANSFORMER, SUBASSY.

A-145 J

4	21	SC-108-9	BOLT, HEX
4	20	PM-100	PIN, COVER BOLT
1	19	FW08MBN	WASHER, FLAT
4	18	LWE08MRN	WASHER, LOCK.
4	17	SCBS0832BN6	SCREW, MACHINE
2	16	NTC2520BNL	NUT, CAP
1	15	A-849	CONNECTOR, INS. LEFT
1	14	A-848	" " RIGHT
2	13	GA-101	GASKET
2	12	GA-100	GASKET
2	11	GA-104	GASKET
16	10	FW25HSS	WASHER, FLAT
12	9	NTH25208814	NUT, HEX
2	8	A-100	STUD, SUB ASSY.
2	7	NS-101	INSULATOR, INSIDE
2	6	NS-100	INSULATOR, OUTSIDE
#	#	#	DELETED
#	#	#	DELETED
1	3	A-754	CONNECTOR/PLATE ASSY
1	2	GA-102	GASKET
1	1	PM-106	CASE

E	1	ITEMS 39 THRU 46 ADDED	1-24-52	5	MS	CDP	AM
4		ITEM 38 ADDED					
D	3	ITEMS 15 & 30 WERE PX-104	11/25/51	A	CPD	JAR	102
2		ITEMS 4 & 29 WERE WL-100-4					
C	1	ITEM 5 WAS SC-102-1	11/26/53	3	VS	JAR	102
1		ITEM 22 WAS SCBS0832BN3					
B	1	# 31 ADDED	11/22/53	2	JAR	102	102
A	2	# 36 ADDED	8-24-52	1	FM	CDP	102
1		WL-100-4 WAS WL-100-3					

J	1	'SUPERSEDED' NOTE ADD.	6-9-54	11509	AKB	@	MM
H	1	FW25HSS WAS FW25MSS	11/26/53	10300	CDP		
G	1	ITEM 41 WAS SCBS1032554	7/19/58	7555	CDP		
13		ITEMS 45, 25, 26, 27, 28, 27 DELETED					
12		NOTE ADDED					
11		ITEM 3 WAS PM-110		6	2	5	0
10		ITEM 15 WAS NTC2520BNL					
9		ITEM 17 WAS SCBS0832BN6					
8		ITEM 18 WAS LWE08MRN					
7		ITEM 19 WAS FW08MBN					
6		ITEM 20 WAS PX-115					
5		ITEM 21 WAS FW25LRN					
4		ITEM 40 WAS LWE10MSS					
3		ITEM 41 WAS SCBS1032554					
2		ITEM 45 WAS SCBS0632BN3					
1		ITEM 46 WAS LWE06MRN					

ISSUE	ITEM	CHANGED FROM	DATE	CN. NO.	DRAFTS	CHECKER	ENG. APP.
ALL OTHERS							
DEC. DIM. ±							
FRAC. DIM. ±							
ANGULAR DIM. ±							