

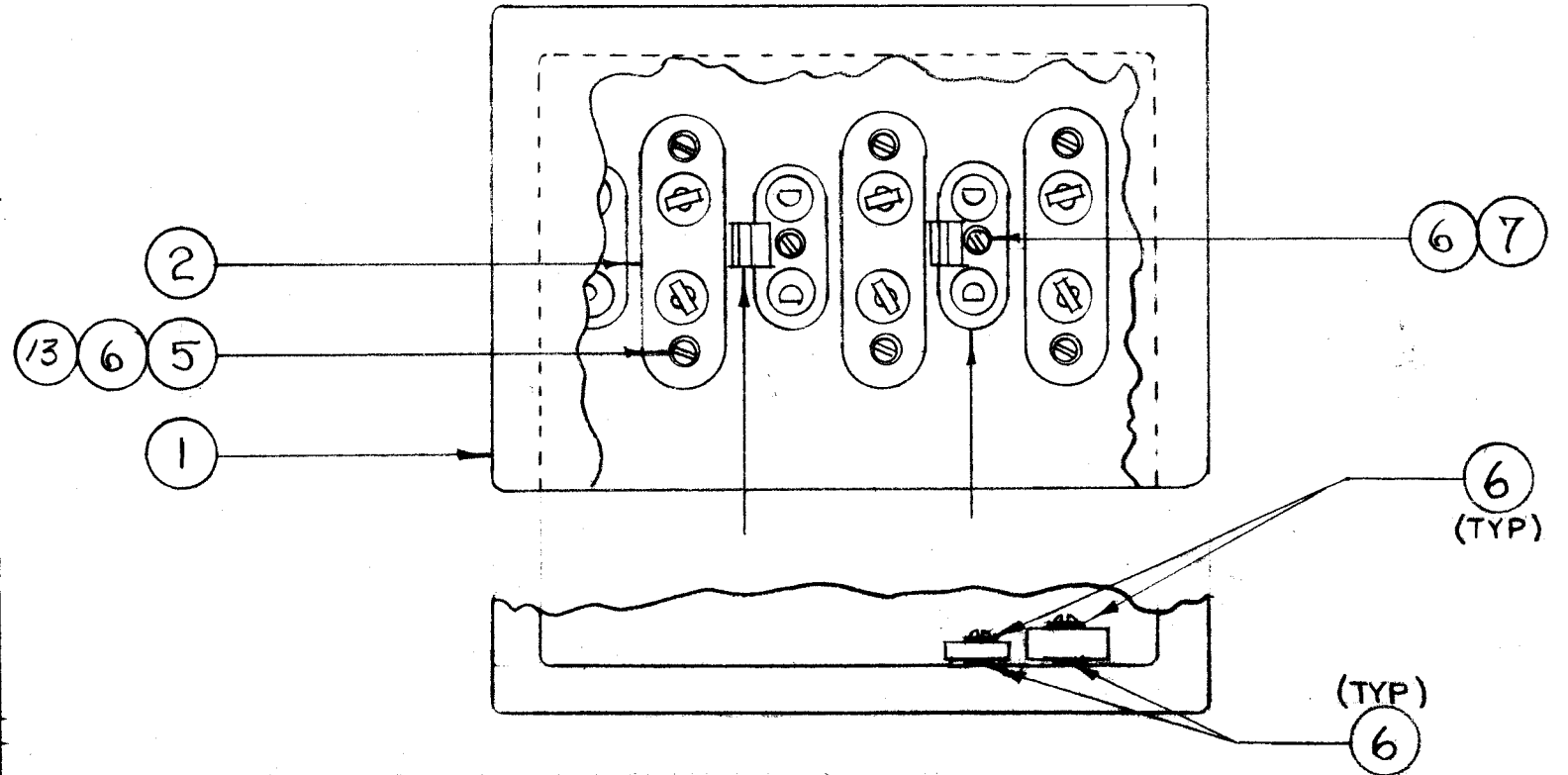
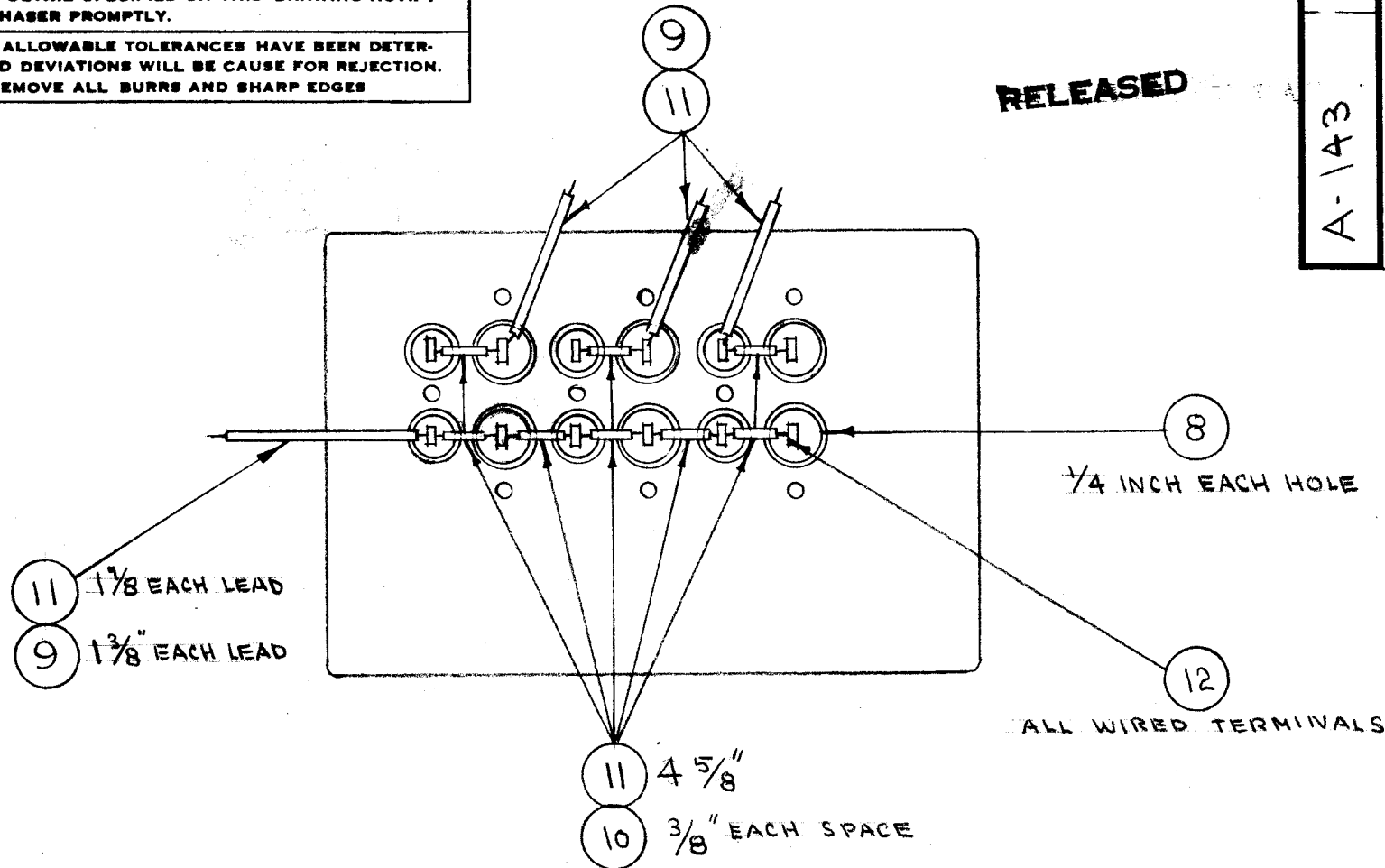
IF IT IS FOUND DESIRABLE TO CHANGE ANY TOLERANCE OR OTHER DETAIL SPECIFIED ON THIS DRAWING NOTIFY THE PURCHASER PROMPTLY.

MAXIMUM ALLOWABLE TOLERANCES HAVE BEEN DETERMINED AND DEVIATIONS WILL BE CAUSE FOR REJECTION. REMOVE ALL BURRS AND SHARP EDGES

RELEASED

A-143 C

REV	DESCRIPTION	DATE	EM.N. NO.	DRAFT	CHKD	APP
A	ITEM 13 WAS ADDED	12-18-54		P.F.		
B	SIDE VIEW ADD. ON B/M IT 6 WAS QTY 9 WA-101-1	9-28-64	12470	P.L.		
C	B/M UPDATED	10.18.66	16064	Wtd		



9	13	LWS04MRN	LOCK, WASHER	
X	12	BS-100	SOLDER, SOFT	
1 1/8"	11	WL-100-7	WIRE, BUSS BAR	
3"	10	PX-10A-A-034	INSULATION, SLEEVING (GRN.)	
5 1/2"	9	PX-10A-2-034	INSULATION, SLEEVING (YEL.)	
3"	8	PX-10A-5-234	INSULATION, SLEEVING (BRN.)	
3	7	SCBP0440 B N 6	SCREW, MACHINE	
18	6	WA-109-17	WASHER, FIBRE	
6	5	SCBP0440 B N 10	SCREW, MACHINE	
3	4	TS-104-1	SOCKET, XTAL	
3	3	FP-109	CLAMP, XTAL	
3	2	TS-105-1	SOCKET, XTAL	
1	1	PM-118	MACHINING, XTAL OVEN	

REQ.	ITEM	PART NO.	DESCRIPTION	SYMBOL
#				
STOCK SIZE			#	
MATERIAL		WEIGHT PER PC.		#
#			TYPE & TEMPER	
#			HEAT TREAT. SPEC.	
#			FINISH & SPEC. NO.	

THE TECHNICAL MATERIEL CORP.				
MAMARONECK. NEW YORK				
CRYSTAL OVEN CORE				
SUB ASSEMBLY				
C.D.D. 10-24-54		#		
DRAWN		ELEC. DES. APP.	MECH. DES. APP.	
WDC 10-27		#		
CHECKED		FINAL APPROVAL		
#		#		

TOLERANCES		SCALE:	LFA	109	A-147	10-24-52
ALL OTHERS	DEC. DIM. ± FRAC. DIM. ± ANGULAR DIM. ±	DRILL, PUNCH, COMMERCIAL STOCK SIZES AND MANUFACTURERS TOLERANCES ARE NOT INCLUDED.	XFK	1		
			MODEL	PROJECT NO.	ASS'Y. NO.	DATE
USED ON						

A-143 C