

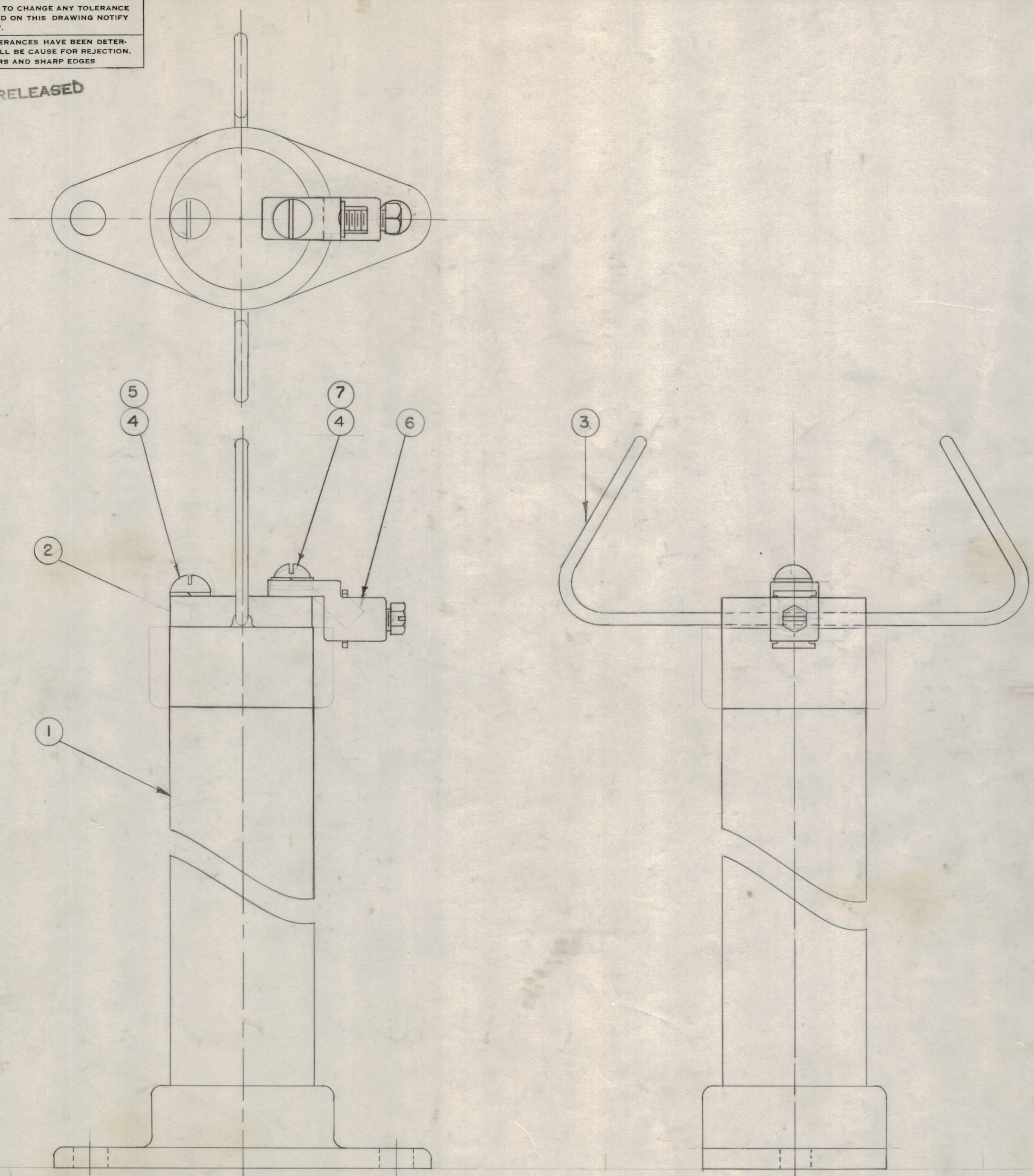
IF IT IS FOUND DESIRABLE TO CHANGE ANY TOLERANCE OR OTHER DETAIL SPECIFIED ON THIS DRAWING NOTIFY THE PURCHASER PROMPTLY.
 MAXIMUM ALLOWABLE TOLERANCES HAVE BEEN DETERMINED AND DEVIATIONS WILL BE CAUSE FOR REJECTION. REMOVE ALL BURRS AND SHARP EDGES

NOTICE TO PERSONS RECEIVING THIS DRAWING

THE TECHNICAL MATERIEL CORPORATION claims proprietary right in the material disclosed hereon. This drawing is issued in confidence for engineering information only and may not be reproduced or used to manufacture anything shown hereon without permission from THE TECHNICAL MATERIEL CORPORATION to the user. This drawing is loaned for mutual assistance and is subject to recall at any time.

Property of:
 THE TECHNICAL MATERIEL CORPORATION
 MAMARONECK, NEW YORK

RELEASED



A-130-2 C

1	7	SCRS3118BN16	SCREW, ROUND HD.	
1	6	TE-106	SOLDERLESS LUG	
1	5	SCRS3118BN14	SCREW, ROUND HD.	
2	4	LWS 31MRC	WASHER LOCK	
1	3	WL - 102	GROUNDING HORN	
1	2	MP - 115	INSULATOR CAP	
1	1	NS - 102	INSULATOR STAND OFF	
REQ. ITEM	PART NO.	DESCRIPTION		SYMBOL
THE TECHNICAL MATERIEL CORP.				
MAMARONECK, NEW YORK				
INSULATOR				
ASSEMBLY				
TYPE & TEMPER		DRAWN		MECH. DES. APP.
HEAT TREAT. SPEC.		CHECKED		FINAL APPROVAL
FINISH & SPEC. NO.		A-130-2		C

C	3	SIZE CHGD. ITEMS 5 AND 7	1-22-51	3	C.D.D.	A	A
B	2	GENERAL REVISION	1-5-53	2	15	A	A
A	1	SCRS 3118 BCIG	12-12-52	1	JAN	A	A
ISSUE	ITEM	CHANGED FROM	DATE	CN. NO.	DRAFTS	CHECKER	ENG. APP.
TOLERANCES			SCALE: FULL SIZE				
ALL OTHERS	DEC. DIM. ± FRAG. DIM. ± ANGULAR DIM. ±		DRILL, PUNCH, COMMERCIAL STOCK SIZES AND MANUFACTURERS TOLERANCES ARE NOT INCLUDED.				

MODEL	141	A-127	8-27-52
PROJECT NO.	ASS'Y. NO.	DATE	
USED ON			