

IF IT IS FOUND DESIRABLE TO CHANGE ANY TOLERANCE OR OTHER DETAIL SPECIFIED ON THIS DRAWING NOTIFY THE PURCHASER PROMPTLY.

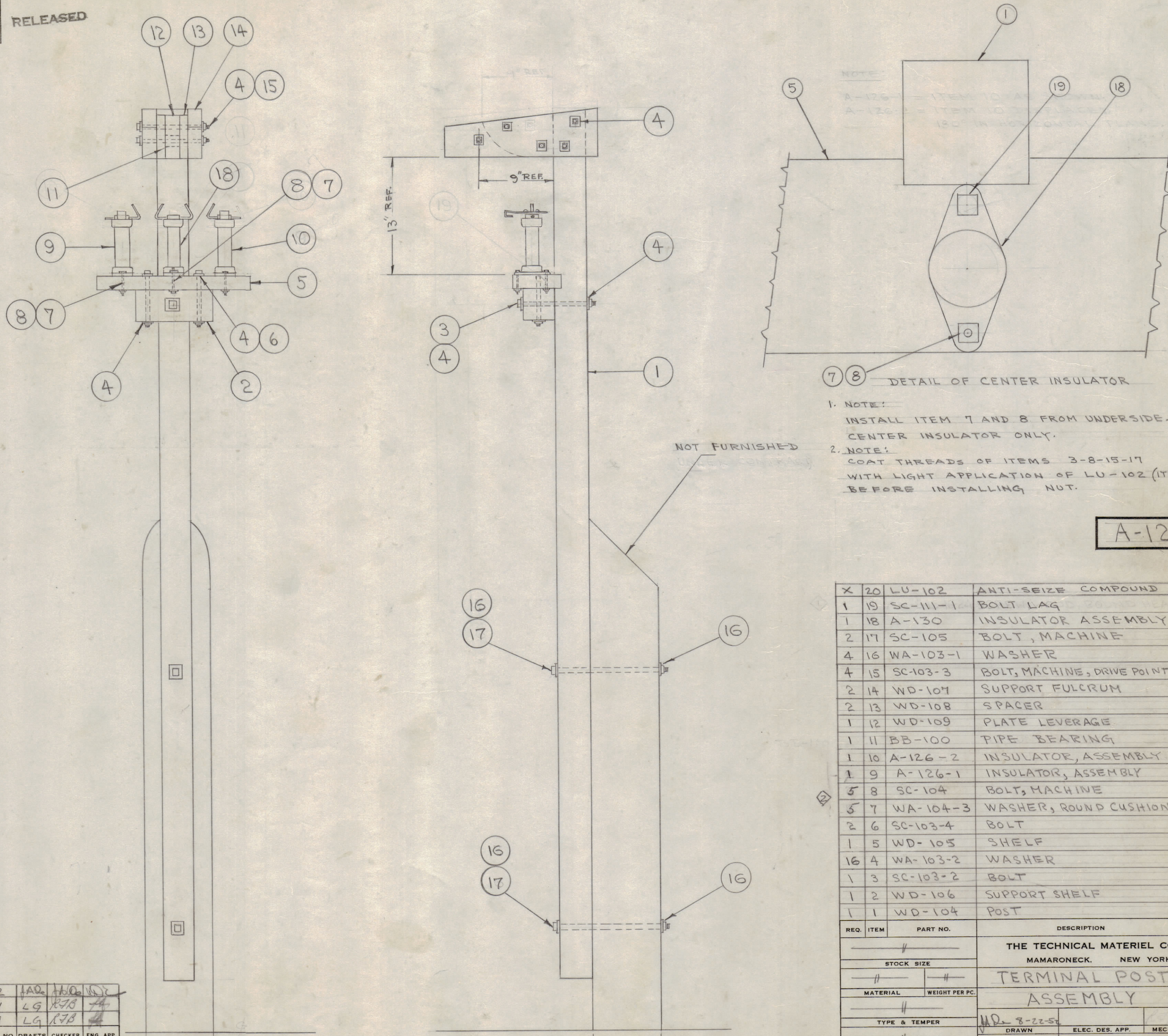
MAXIMUM ALLOWABLE TOLERANCES HAVE BEEN DETERMINED AND DEVIATIONS WILL BE CAUSE FOR REJECTION. REMOVE ALL BURRS AND SHARP EDGES

RELEASED

NOTICE TO PERSONS RECEIVING THIS DRAWING

THE TECHNICAL MATERIEL CORPORATION claims proprietary right in the material disclosed hereon. This drawing is issued in confidence for engineering information only and may not be reproduced or used to manufacture anything shown hereon without permission from THE TECHNICAL MATERIEL CORPORATION to the user. This drawing is loaned for mutual assistance and is subject to recall at any time.

Property of:
THE TECHNICAL MATERIEL CORPORATION
MAMARONECK, NEW YORK



NOTE:
A-126-1 = ITEM 10 ASSEMBLY
A-126-2 = ITEM 10 ASSEMBLY
180° IN ROTATIONAL PLANE

7 8 DETAIL OF CENTER INSULATOR

1. NOTE:
INSTALL ITEM 7 AND 8 FROM UNDERSIDE. CENTER INSULATOR ONLY.

2. NOTE:
COAT THREADS OF ITEMS 3-8-15-17 WITH LIGHT APPLICATION OF LU-102 (ITEM 20) BEFORE INSTALLING NUT.

A-127 B

REQ.	ITEM	PART NO.	DESCRIPTION	SYMBOL
X	20	LU-102	ANTI-SEIZE COMPOUND	
1	19	SC-111-1	BOLT LAG	
1	18	A-130	INSULATOR ASSEMBLY	
2	17	SC-105	BOLT, MACHINE	
4	16	WA-103-1	WASHER	
4	15	SC-103-3	BOLT, MACHINE, DRIVE POINT	
2	14	WD-107	SUPPORT FULCRUM	
2	13	WD-108	SPACER	
1	12	WD-109	PLATE LEVERAGE	
1	11	BB-100	PIPE BEARING	
1	10	A-126-2	INSULATOR, ASSEMBLY	
1	9	A-126-1	INSULATOR, ASSEMBLY	
5	8	SC-104	BOLT, MACHINE	
5	7	WA-104-3	WASHER, ROUND CUSHION	
2	6	SC-103-4	BOLT	
1	5	WD-105	SHELF	
16	4	WA-103-2	WASHER	
1	3	SC-103-2	BOLT	
1	2	WD-106	SUPPORT SHELF	
1	1	WD-104	POST	

ISSUE	ITEM	CHANGED FROM	DATE	CN. NO.	DRAFTS	CHECKER	ENG. APP.
B	3	GENERAL REVISION	12-11-52	2	JAG	HAG	[Signature]
A	2	QUAN. WAS 6	10/8/52	1	LG	RFB	[Signature]
A	1	#19 ADDED	10/8/52	1	LG	RFB	[Signature]

TOLERANCES		SCALE: 1/2" = 1'-0"
ALL OTHERS	DEC. DIM. ± FRAC. DIM. ± ANGULAR DIM. ±	DRILL, PUNCH, COMMERCIAL STOCK SIZES AND MANUFACTURERS TOLERANCES ARE NOT INCLUDED.

MODEL	PROJECT NO.	ASSY. NO.	DATE
	#141		2-22-52

THE TECHNICAL MATERIEL CORP. MAMARONECK, NEW YORK			
TERMINAL POST ASSEMBLY			
TYPE & TEMPER	HEAT TREAT. SPEC.	FINISH & SPEC. NO.	
DRAWN	ELEC. DES. APP.	MECH. DES. APP.	
CHECKED	FINAL APPROVAL		
			A-127 B