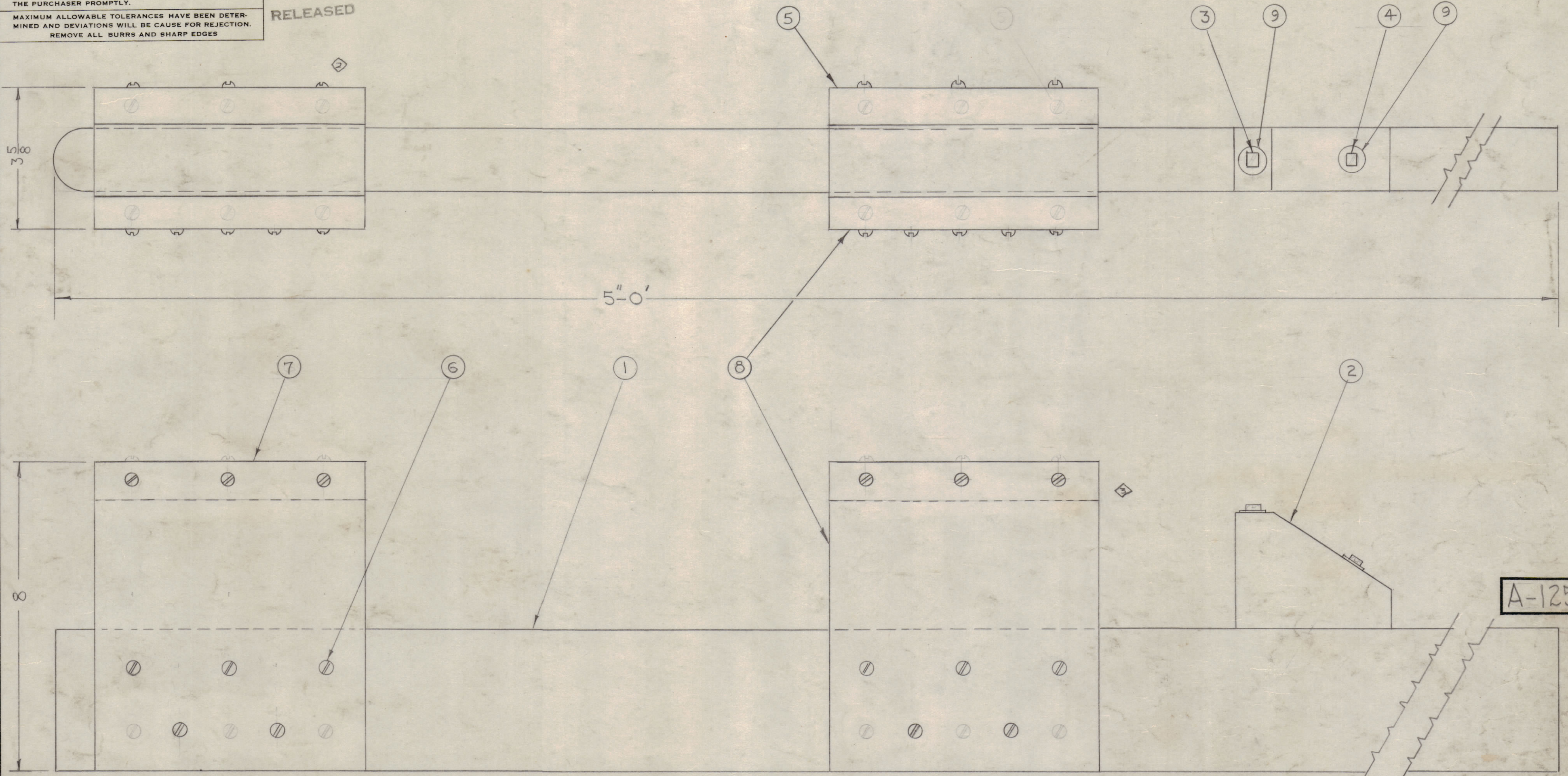


IF IT IS FOUND DESIRABLE TO CHANGE ANY TOLERANCE OR OTHER DETAIL SPECIFIED ON THIS DRAWING NOTIFY THE PURCHASER PROMPTLY.  
 MAXIMUM ALLOWABLE TOLERANCES HAVE BEEN DETERMINED AND DEVIATIONS WILL BE CAUSE FOR REJECTION.  
 REMOVE ALL BURRS AND SHARP EDGES

RELEASED



A-125 D

0	5	GENERAL REVISION					
1	4	ITEM B ADD					
A	3	DIMS					
A	2	SCREWS					
D	6	GENERAL REVISION	12-11-52	4	JAG		
ISSUE	ITEM	CHANGED FROM	DATE	CN. NO.	DRAFTS	CHECKER	ENG. APP.
TOLERANCES		SCALE:					
ALL OTHERS	DEC. DIM. ± FRAC. DIM. ± ANGULAR DIM. ±	DRILL, PUNCH, COMMERCIAL STOCK SIZES AND MANUFACTURERS TOLERANCES ARE NOT INCLUDED.					

**NOTICE TO PERSONS RECEIVING THIS DRAWING**  
 THE TECHNICAL MATERIEL CORPORATION claims proprietary right in the material disclosed hereon. This drawing is issued in confidence for engineering information only and may not be reproduced or used to manufacture anything shown hereon without permission from THE TECHNICAL MATERIEL CORPORATION to the user. This drawing is loaned for mutual assistance and is subject to recall at any time.

Property of:  
 THE TECHNICAL MATERIEL CORPORATION  
 MAMARONECK, NEW YORK

2	9	AN960-C416	WASHER ROUND	
2	8	WD-102-2	SUPPORT, WOOD	
2	7	WD-103	SUPPORT, WOOD	
32	6	AN545-10-14	SCREW, WOOD	
2	5	WD-102-1	SUPPORT, WOOD	
1	4	SC-111-3	BOLT LAG	
1	3	SC-111-4	BOLT LAG	
1	2	WD-101	SUPPORT SWITCH ARM	
1	1	WD-100	POST	
REQ. ITEM	PART NO.	DESCRIPTION		SYMBOL
<b>THE TECHNICAL MATERIEL CORP.</b> MAMARONECK, NEW YORK				
<b>SWITCH ARM HOLDER ASSEMBLY</b>				
STOCK SIZE		DRAWN: JAG 8-15-52		
MATERIAL		WEIGHT PER PC.		ELEC. DES. APP.
TYPE & TEMPER		MECH. DES. APP.		
HEAT TREAT. SPEC.		CHECKED: RFB 8/29/52		
FINISH & SPEC. NO.		FINAL APPROVAL		
		A-125 D		

MODEL	PROJECT NO. 141	ASS'Y. NO.	DATE
USED ON			