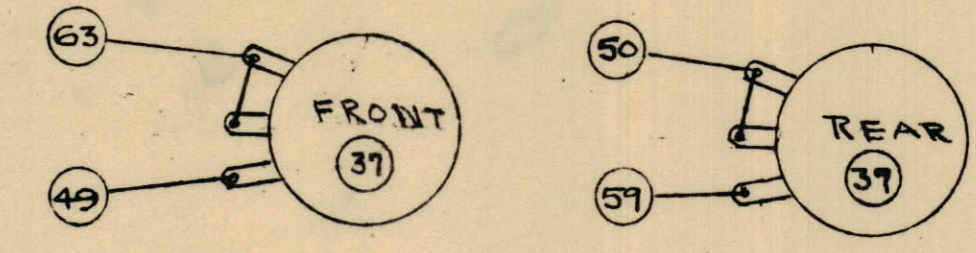


IF IT IS FOUND DESIRABLE TO CHANGE ANY TOLERANCE OR OTHER DETAIL SPECIFIED ON THIS DRAWING NOTIFY THE PURCHASER PROMPTLY.
 MAXIMUM ALLOWABLE TOLERANCES HAVE BEEN DETERMINED AND DEVIATIONS WILL BE CAUSE FOR REJECTION REMOVE ALL BURRS AND SHARP EDGES

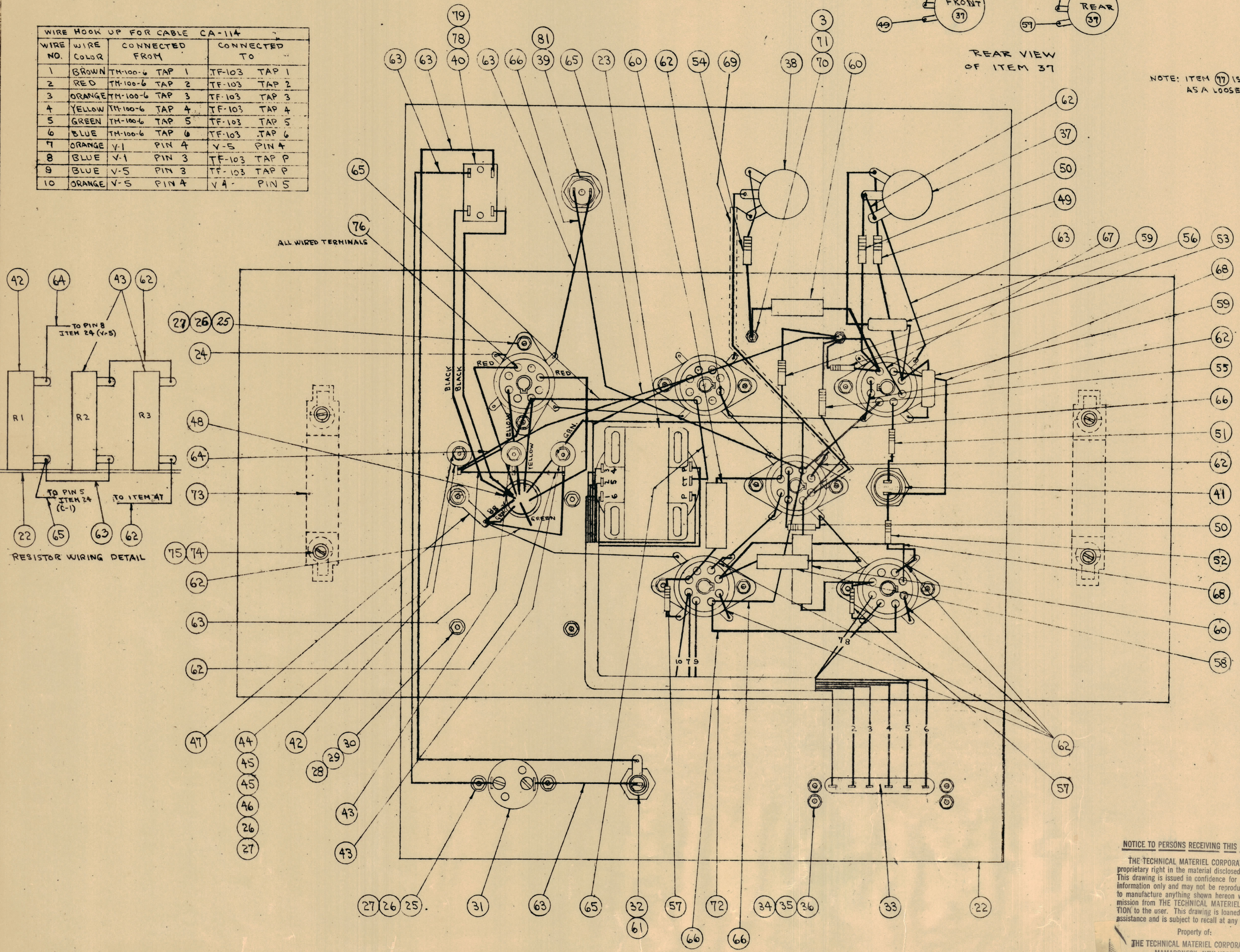
RELEASED

WIRE NO.	WIRE COLOR	CONNECTED FROM	CONNECTED TO
1	BROWN	TM-100-6 TAP 1	TF-103 TAP 1
2	RED	TM-100-6 TAP 2	TF-103 TAP 2
3	ORANGE	TM-100-6 TAP 3	TF-103 TAP 3
4	YELLOW	TM-100-6 TAP 4	TF-103 TAP 4
5	GREEN	TM-100-6 TAP 5	TF-103 TAP 5
6	BLUE	TM-100-6 TAP 6	TF-103 TAP 6
7	ORANGE	V-1 PIN 4	V-5 PIN 4
8	BLUE	V-1 PIN 3	TF-103 TAP P
9	BLUE	V-5 PIN 3	TF-103 TAP P
10	ORANGE	V-5 PIN 4	V-1 PIN 5



REAR VIEW OF ITEM 37

NOTE: ITEM 17 IS SUPPLIED ASA LOOSE ITEM



LD-110 CHASSIS LETTERING - TOP	LD-106 CHASSIS LETTERING - BOTTOM	
1 81 BI-101-44	INCANDESCENT LAMP	I-1
X 80 CK-102	SCHEMATIC DIAGRAM	
1 79 LW10LR	LOCKWASHER, INT. TOOTH	
1 78 WA-100	LOCKING RING	
1 77 CA-103	CORD ASSY.	
X 76 BS-100	SOLDER, SOFT	
4 75 LW10BMR	LOCKWASHER, EXT. TOOTH	
4 74 SCPS0832BN4	SCREW, MACHINE	
2 73 HA-100	HANDLE	
1 72 CA-114	CABLE DIAGRAM, SUB ASSY.	
2 71 SCPS0440BN4	SCREW, MACHINE	
2 70 TE-102-2	TERMINAL, TURRET	
7" 69 WL-101-1	CABLE, SHIELD FLEXIBLE	
10" 68 SRIR(1)20U44	CABLE, INSULATED	
3" 67 SRIR(1)20U66	CABLE, INSULATED	
17" 66 SRIR(1)20U11	CABLE, INSULATED	
14" 65 SRIR(1)20U22	CABLE, INSULATED	
6" 64 SRIR(1)20U33	CABLE, INSULATED	
34" 63 SRIR(1)20U00	CABLE, INSULATED	
14" 62 WL-100-6	WIRE, BUSS BAR	
1 61 FU-100-2	FUSE	
3 60 CN-100-4	CAPACITOR, FIXED	C-5-C1
2 59 CM35C682G	CAPACITOR, MICA	C-5-C2
1 58 RW-106	RESISTOR, FIXED	R-17
2 57 RC20GF223K	RESISTOR, FIXED	R-15
1 56 RC20GF563K	RESISTOR, FIXED	R-14
1 55 RC20GF333K	RESISTOR, FIXED	R-12
1 54 RC20GF474K	RESISTOR, FIXED	R-10

1 53 RC20GF153K	RESISTOR, FIXED	R-9
1 52 RC20GF681K	RESISTOR, FIXED	R-8
1 51 RC20GF151K	RESISTOR, FIXED	R-7
2 50 RC20GF272K	RESISTOR, FIXED	R-13
1 49 RC20GF123K	RESISTOR, FIXED	R-5
1 48 AN-931-7-11	GROMMET, ELASTIC	
1 47 TE-104-3	TERMINAL, LOCKING	
3 46 FW06MBC	WASHER, FLAT	
6 45 WA-102-4	WASHER, FIBRE SHOULDER	
3 44 SCPS0632BN36	SCREW, MACHINE	
2 43 RW-110-35	RESISTOR, FIXED	R-2-R3
1 42 RW-110-23	RESISTOR, FIXED	R-1
1 41 TS-108-2	SOCKET, BAYONET	XI-2
1 40 ST-22-K	SWITCH, TOGGLE	S-1
1 39 TS-106-1	SOCKET LENS, MIN. BAYONET	XI-1
1 38 RVA1TRD504B	RESISTOR, VARIABLE	R-11
1 37 PT-100	RESISTOR, VARIABLE DUAL	R-4
4 36 NTH0432BC8	NUT, HEXAGONAL	
4 35 LW10AMRC	LOCKWASHER, INT. TOOTH	
4 34 SCBS0440BN8	SCREW, MACHINE	
1 33 TM-100-6	TERMINAL STRIP	E-1
1 32 FH-100-2	FUSE EXTRACTOR POST	XF-1
1 31 IJ-100-A	RECEPTACLE, HALF TWIST LOCK	J-1
4 30 NTH0832BC8	NUT, HEXAGONAL	
4 29 LW10BMR	LOCKWASHER, INT. TOOTH	
4 28 SCPS0832BN6	SCREW, MACHINE	
15 27 NTH0432BC8	NUT, HEXAGONAL	
15 26 LW106MRC	LOCKWASHER, INT. TOOTH	
12 25 SCPS0632BN4	SCREW, MACHINE	
6 24 TS-101P01	SOCKET, OCTAL	
1 23 TF-103	TRANSFORMER, UNIV. OUTPUT T2	
1 22 MS-110	CHASSIS, LAYOUT	

NOTICE TO PERSONS RECEIVING THIS DRAWING

THE TECHNICAL MATERIEL CORPORATION claims proprietary right in the material disclosed hereon. This drawing is issued in confidence for engineering information only and may not be reproduced or used to manufacture anything shown hereon without permission from THE TECHNICAL MATERIEL CORPORATION to the user. This drawing is loaned for mutual assistance and is subject to recall at any time.

Property of:
 THE TECHNICAL MATERIEL CORPORATION
 MAMARONECK, NEW YORK

REV.	ITEM	CHANGED FROM	DATE	BY	CHK'D	ENG'G
A	Revised		7-5-53			

VTG	103	B-20-52
MODEL	PROJECT NO.	DATE

REV.	ITEM	PART NO.	DESCRIPTION	SYMBOL
			THE TECHNICAL MATERIEL CORP.	
			MAMARONECK, NEW YORK	
			COVER + CHASSIS ASSY.	