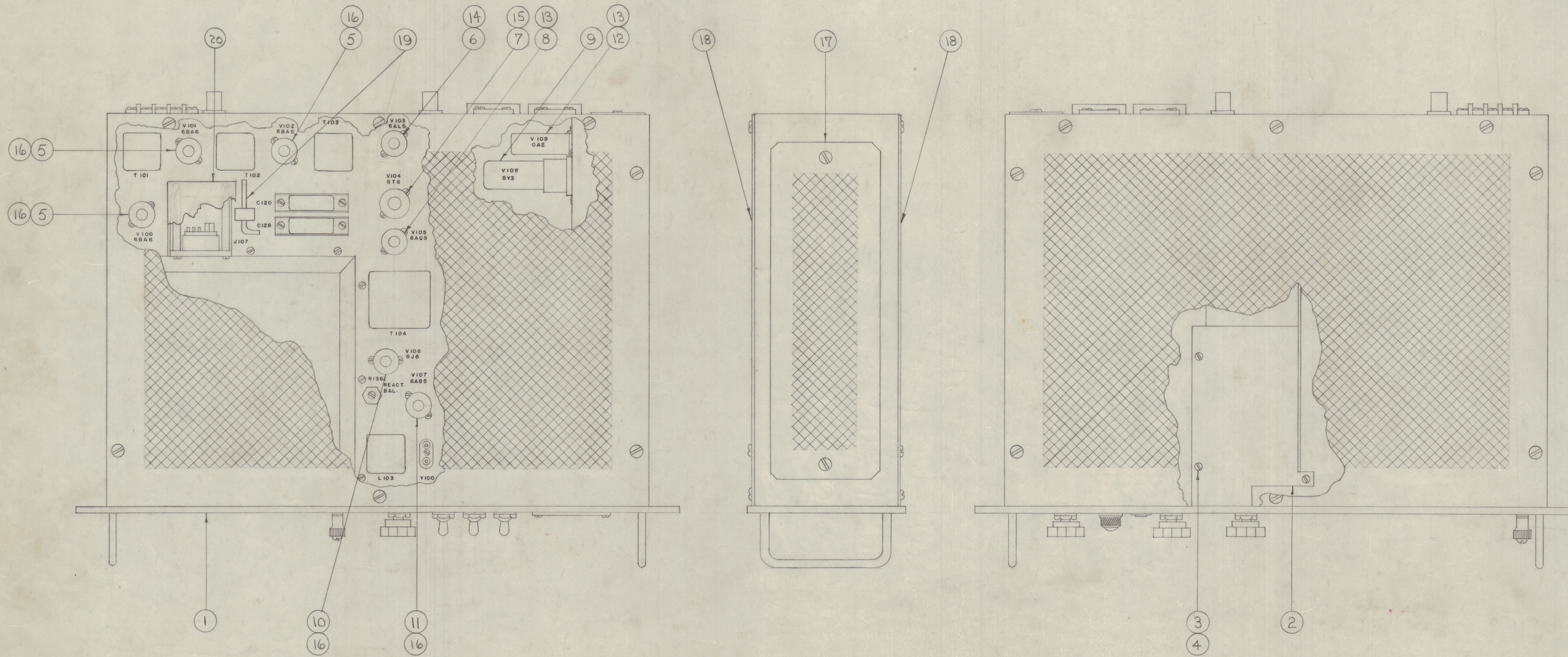


IF IT IS FOUND DESIRABLE TO CHANGE ANY TOLERANCE OR OTHER DETAIL, SPECIFIED ON THIS DRAWING NOTIFY THE PURCHASER PROMPTLY.  
 MAXIMUM ALLOWABLE TOLERANCES HAVE BEEN DETERMINED AND DEVIATIONS WILL BE CAUSE FOR REJECTION.  
 REMOVE ALL BURRS AND SHARP EDGES

RELEASED



1	20	A-324	JACK COVER ASSY.	
1	19	WR-100-4	WRENCH, HEX.	
2	18	A-317	COVER ASSY, TOP+BOTTOM	
1	17	A-316	COVER ASSY, POWER SUPPLY	
5	16	TS102 U02	SOCKET SHIELD	
1	15	TS103 U02	SOCKET SHIELD	
1	14	TS102 U01	SOCKET SHIELD	
2	13	TS102 U03	SOCKET SHIELD	
1	12	0A2	TUBE, ELECTRON	V109
1	11	6A5	TUBE, ELECTRON	V107
1	10	6J6	TUBE, ELECTRON	V106
1	9	5Y3	TUBE, ELECTRON	V105
1	8	6AQ5	TUBE, ELECTRON	V105
1	7	6T8	TUBE, ELECTRON	V104
1	6	6AL5	TUBE, ELECTRON	V103
3	5	6BA6	TUBE, ELECTRON	V100
3	4	LWE04 LRC	WASHER, LOCK	V102
3	3	SCB50A40BC4	SCREW, MACHINE	
1	2	LD2084/MS181	SHIELD, B.F.O.	
1	1	A-286	CHASSIS+FRONT PANEL ASSY.	

REQ. ITEM	PART NO.	DESCRIPTION	SYMBOL
THE TECHNICAL MATERIEL CORP. MAMARONECK, NEW YORK			
MAIN ASSEMBLY			
MATERIAL		FFR-2	
TYPE & TEMPER		C.O.D. 12-10-54	G.T.O.
HEAT TREAT. SPEC.		MECH. DES. APP.	MECH. DES. APP.
FINISH & SPEC. NO.		CHECKED	FINAL APPROVAL
		SUPERCEDES	FFR 12/10/54
			A-122 B

NOTICE TO PERSONS RECEIVING THIS DRAWING

THE TECHNICAL MATERIEL CORPORATION claims proprietary right in the material disclosed herein. This drawing is issued in confidence for engineering information only and may not be reproduced or used to manufacture anything shown hereon without permission from THE TECHNICAL MATERIEL CORPORATION to the user. This drawing is loaned for mutual assistance and is subject to recall at any time.

Property of:  
 THE TECHNICAL MATERIEL CORPORATION  
 MAMARONECK, NEW YORK

B	ITEM 2 WAS MS181	6/2/64	16322	C.H.	9/16	9/16
A	NEW IS RELEASED	5/1/53		C.D.D.	W.C.	W.C.
ISSUE	ITEM	CHANGED FROM	DATE	CN. NO.	DRAFTS	CHECKER
TOLERANCES						
SCALE:						
ALL	DEC. DIM. ±	DRILL, PUNCH, COMMERCIAL STOCK				
OTHERS	FRAC. DIM. ±	SIZES AND MANUFACTURERS				
	ANGULAR DIM. ±	TOLERANCES ARE NOT INCLUDED.				

FFR-2	104		12-27-54
MODEL	PROJECT NO.	ASSY. NO.	DATE
USED ON			

A-122 B