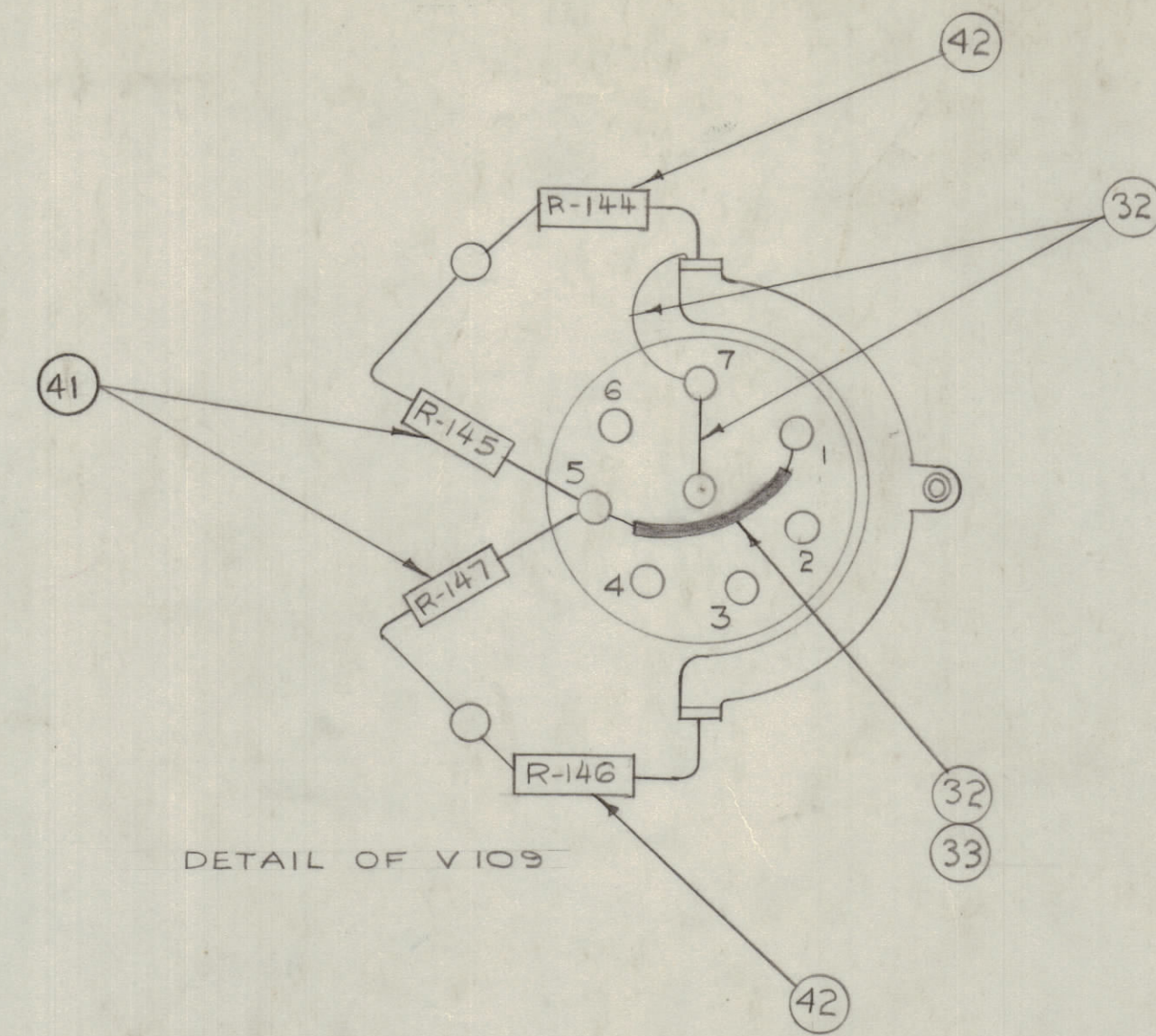
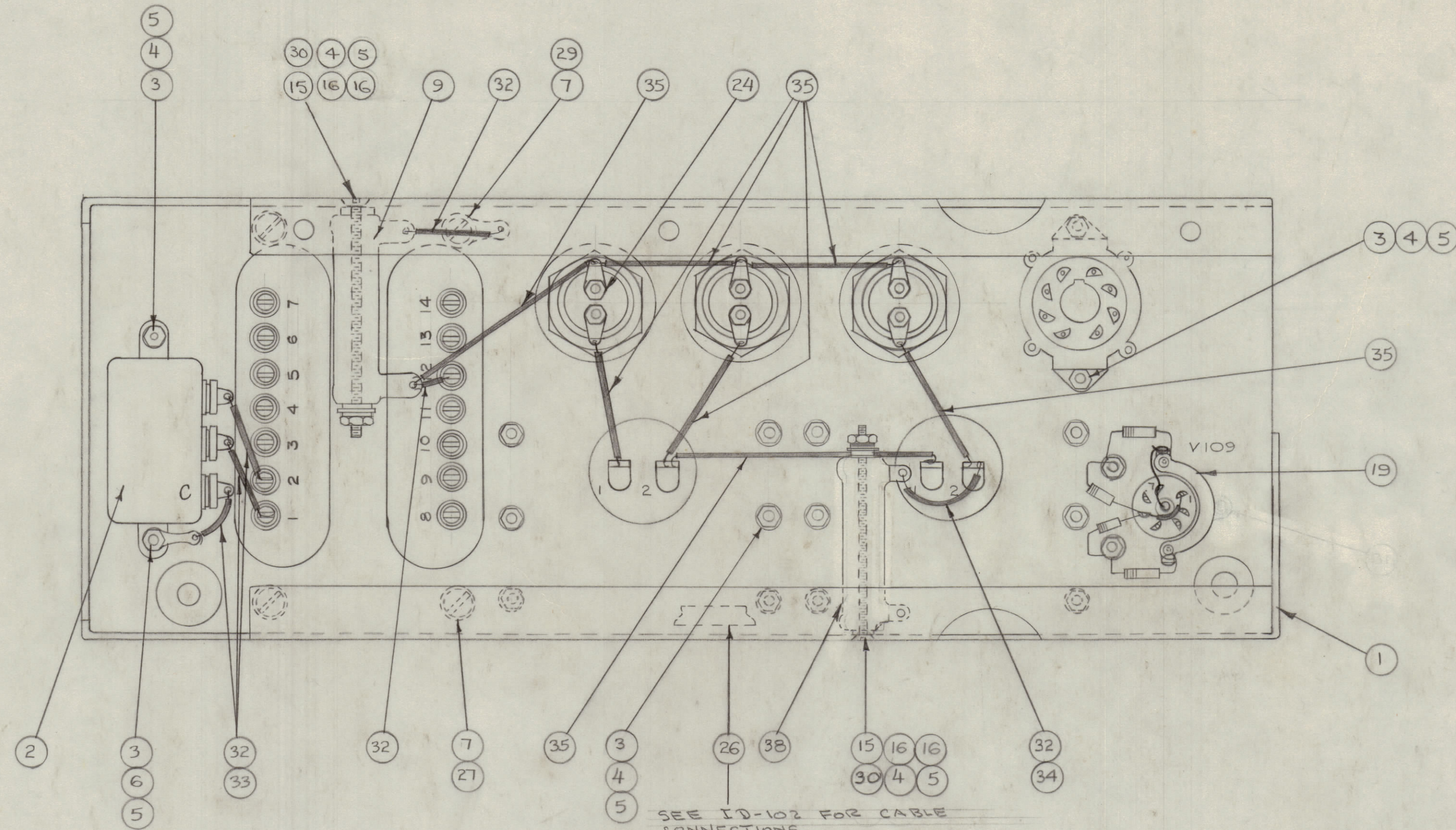
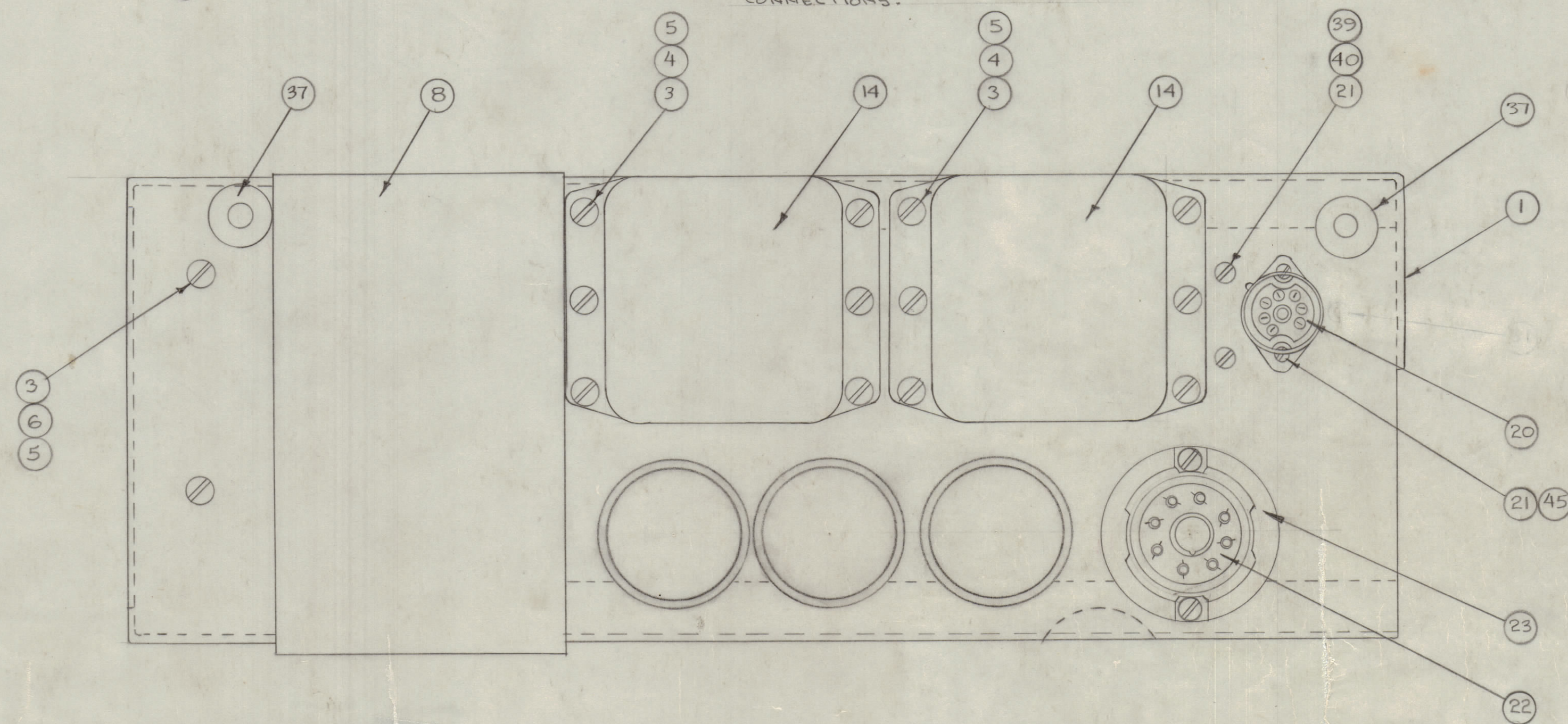


IF IT IS FOUND DESIRABLE TO CHANGE ANY TOLERANCE OR OTHER DETAIL SPECIFIED ON THIS DRAWING NOTIFY THE PURCHASER PROMPTLY.  
 MAXIMUM ALLOWABLE TOLERANCES HAVE BEEN DETERMINED AND DEVIATIONS WILL BE CAUSE FOR REJECTION. REMOVE ALL BURRS AND SHARP EDGES

RELEASED



NOTE:  
 ITEM 32 USED EIGHT PLACES.  
 ITEM 33 USED THREE PLACES.  
 ITEM 34 USED ONE PLACE.  
 ITEM 35 USED SEVEN PLACES.



2	45	LWS04 MSC	WASHER, LOCK	
X	44	CK-101	SCHEMATIC	
X	43	ID-102	WIRING DIAGRAM	
2	42	RC20GF682J	RESISTOR, FIXED	R-144
2	41	RC20GF154J	RESISTOR, FIXED	R-145
2	40	LWE04MRC	WASHER, LOCK, EXT.	R-147
2	39	TE-102-2	TERMINAL, TURRET	
1	38	RW-110-27	RESISTOR, FIXED	R-148
2	37	AN931-4-7	GROMMET, ELASTIC	
X	36	BS-100	SOLDER, SOFT	
21	35	SR1R 3/8(7)-22-LP2	CABLE (hook-up) INSULATED, STRANDED	
1 1/2	34	PX-104-3-.034	INSULATION, SLEEVING	
5/8	33	PX-104-1-.034	INSULATION, SLEEVING	

1 1/2	32	WL-100-6	WIRE; BUSS-BAR TINNED	
	31		DELETED	
2	30	FW06MBC	WASHER, FLAT	
1	29	TE-104-4	TERMINAL, LOCKING	
	28		(DELETED)	
3	27	LWS10MRN	WASHER, LOCK	
1	26	CA-113	CABLE	
	25		(DELETED)	
3	24	CP41B1FF405V	CAPACITOR, FIXED	C-148
1	23	CU-100-3	HOLDER, TUBE	C-149
1	22	TS-101-PO1	SOCKET, OCTAL	C-150
4	21	SCRS0440BN4	SCREW, MACHINE	XV-108
1	20	TS-102-PO1	SOCKET, 7 PIN MINIATURE	XV-109
1	19	NT-101-4	NUT, STRAP FOR MINIATURE SOCKETS	
	18		(DELETED)	
	17		(DELETED)	
4	16	WA-102-6	WASHER - FIBER SHOULDER	
2	15	SCFS0632BN40	SCREW, MACHINE	
2	14	TF-5000	INDUCTOR	
	13		(DELETED)	
	12		(DELETED)	
	11		(DELETED)	
	10		(DELETED)	
1	9	RW-102	RESISTOR, FIXED, WIREWOUND	R-149
1	8	TF-101	POWER TRANSFORMER	T-105
4	7	SCBS1032BN7	SCREW, MACHINE	
1	6	TE-104-2	TERMINAL, LOCKING	
18	5	NTH0632BN8	NUT, HEX., DOUBLE CHAMFER	
17	4	LWS06LRN	WASHER, LOCK	
16	3	SCBS0632BN5	SCREW, MACHINE	
1	2	CP53B4EF104K	CAPACITOR, FIXED	C-147-A
1	1	MS-176	CHASSIS, P.S. (LETTERED)	C-147-B

REQ. ITEM	PART NO.	DESCRIPTION	SYMBOL
THE TECHNICAL MATERIEL CORP. MAMARONECK, NEW YORK			
POWER SUPPLY			
ASSEMBLY			
TYPE & TEMPER			
HEAT TREAT. SPEC.			
CHECKED			
FINAL APPROVAL			

E	3	ITEM-31 DELETED	4/2/53	6	JAD	WOB	FR
D	2	ITEMS-9-5-15-16-30 CHANGED	3/12/53	5	JAD	CO-D	FR
C	1	ITEMS-10-11-12-13-28-DELETED	3/22/52	4	WOB	FR	FR
C	1	REDRAWN - NO CHANGE	3/22/52	4	WOB	FR	FR
ISSUE	ITEM	CHANGED FROM	DATE	CN. NO.	DRAFTS	CHECKER	ENG. APP.
TOLERANCES		SCALE: 1/4"					
DEC. DIM. ±		DRILL, PUNCH, COMMERCIAL STOCK					

PROPERTY OF: TECHNICAL MATERIEL CORPORATION  
 MAMARONECK, NEW YORK

FFR-2 A-286 12-27-54

A-121 E