

STANDARD DRAWING

REQ. PER UNIT

MODEL

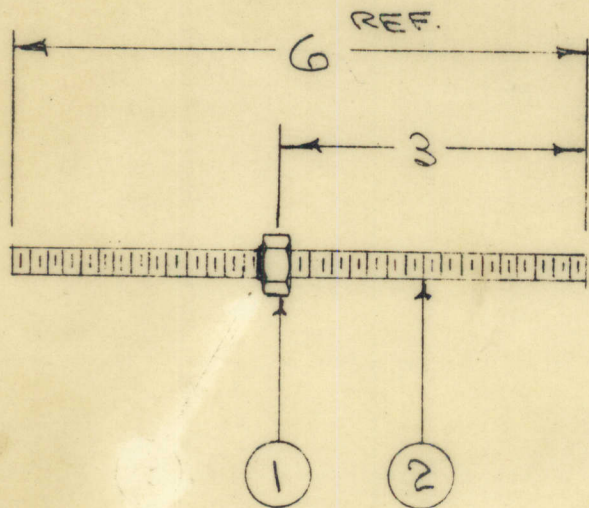
USED ON

ASSY. NO.

DATE

A-100

L



STAKE WITH EPOXY -

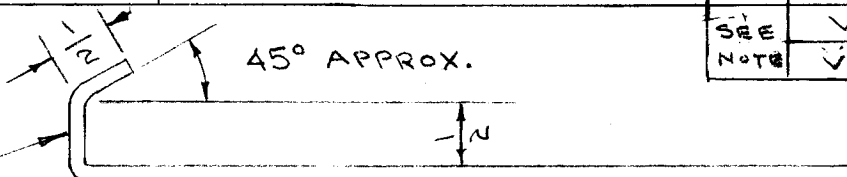
L	1	ITEM 1 WAS 3N14 ITEM 3 (BS 100) DEL.	7-2-80	21820	G.D.L.														
K		STAKE NOTE ADDED	6-15-72	20733	GE	EP	EP			1	2	SM2520BP6.000	STUD, CONT. THD.						
J	1	* NOTE ADDED	6-16-64	11562	A.M.	JAL	JAL			1	1	NTH2520BN12	NUT, HEX-30R1.5						
H	1	EXTEN. CHG. SEE EMN	3-9-64	9502	AM.	JCB	JCB												
G	1	S135 NICKEL WAS S10SCADMIUM	2-28-62	6453	GG	JAL	JAL							THE TECHNICAL MATERIEL CORP. MAMARONECK, NEW YORK					
F	1	ITEM 1 WAS NTH2520BC14	12/10/56	6	10	JAL	JAL							STUD ASSEMBLY					
E	1	3" WAS 3/8"	10/19/56	5	000	JAL	JAL												
		REDRAWN NO CHANGE	8/1/57		000	JAL	JAL												
ISSUE	ITEM	CHANGED FROM	DATE	CH. NO.	DRAFTS	CHECKER	ENG. APP.												
TOLERANCES			SCALE:			MATERIAL			FINISH & SPEC. NO.			ELEC. DES. APP.			MECH. DES. APP.				
DEC. DIM. ±			MAXIMUM ALLOWABLE TOLERANCES HAVE BEEN DETERMINED AND ANY DEVIATIONS WILL BE CAUSE FOR REJECTION.			S-135 NICKEL PLATE			DRAWN			CHECKED			FINAL APPROVAL				
FRAC. DIM. ±			REMOVE ALL BURRS AND SHARP EDGES			.0002			JAL			JAL			A-100				
ANGULAR DIM. ±															L				

IF IT IS FOUND DESIRABLE TO CHANGE ANY TOLERANCE OR OTHER DETAIL SPECIFIED ON THIS DRAWING NOTIFY THE PURCHASER PROMPTLY.

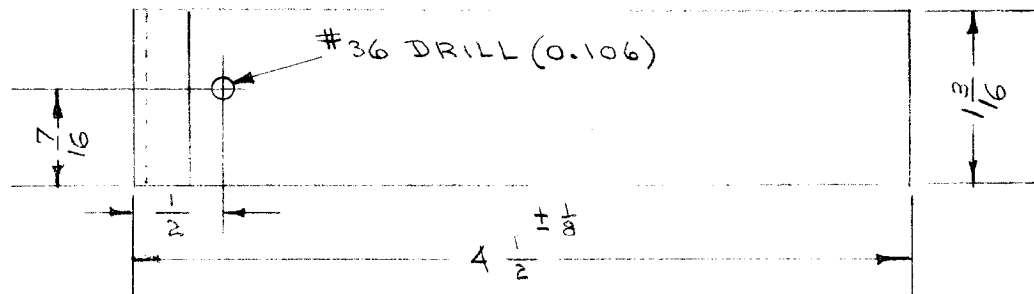
A-104

MAXIMUM ALLOWABLE TOLERANCES HAVE BEEN DETERMINED AND DEVIATIONS WILL BE CAUSE FOR REJECTION. REMOVE ALL BURRS AND SHARP EDGES

PER UNIT	USED ON			
	MODEL	PROJECT NO.	ASS'Y. NO.	DATE
SEE NOTE	VOX	101		7-2-52
	VOX-12			2-2-55

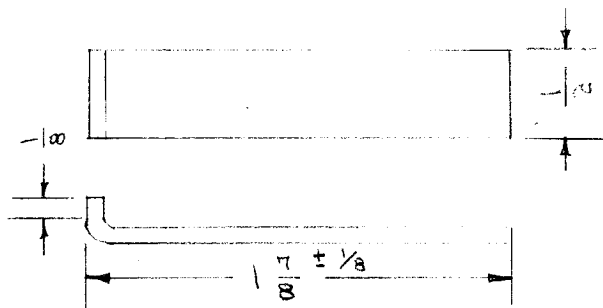


INSTALL 6-32 x 3/8 SELF TAPPING SCREW WITH CAPTIVE WASHER FROM THIS SIDE.



A-104-1

DRILL #36 (0.106) HOLE AND INSTALL 6x32 x 3/8 SELF TAPPING SCREW WITH CAPTIVE WASHER AT TIME OF ASSEMBLY.



A-104-2

SEE SPEC- S-103 FOR INSTALLATION

NO BILL OF MATERIAL

REQ.	ITEM	PART NO.	DESCRIPTION	SYMBOL
		.064	THE TECHNICAL MATERIEL CORP. MAMARONECK, NEW YORK	
		STOCK SIZE		
		ALUMINUM	VOX MOTOR PACKING	
		MATERIAL	STRIPS	
		WEIGHT PER PC.		
		52S-H32		
		TYPE & TEMPER		
		HEAT TREAT. SPEC.		
		FINISH & SPEC. NO.		

ISSUE	ITEM	CHANGED FROM	DATE	CN. NO.	DRAFTS	CHECKER	ENG. APP.
A	1	1 3/16 WAS 1/2, 7/16 WAS 3/4	4-22-52	2	PR		
		REDRAWN - NO CHANGE	7/13/52	1	CDD	YS	

TOLERANCES		SCALE
ALL OTHERS	DEC. DIM. ± FRAC. DIM. ± 1/64 ANGULAR DIM. ±	DRILL, PUNCH, COMMERCIAL STOCK SIZES AND MANUFACTURERS TOLERANCES ARE NOT INCLUDED.

EMB 7/1/52
DRAWN
ELEC. DES. APP. AJJ
MECH. DES. APP. [Signature]
16 1-13-52
CHECKED
FINAL APPROVAL
AJJ [Signature]

A-104 A

IF IT IS FOUND DESIRABLE TO CHANGE ANY TOLERANCE OR OTHER DETAIL SPECIFIED ON THIS DRAWING NOTIFY THE PURCHASER PROMPTLY.

A-128

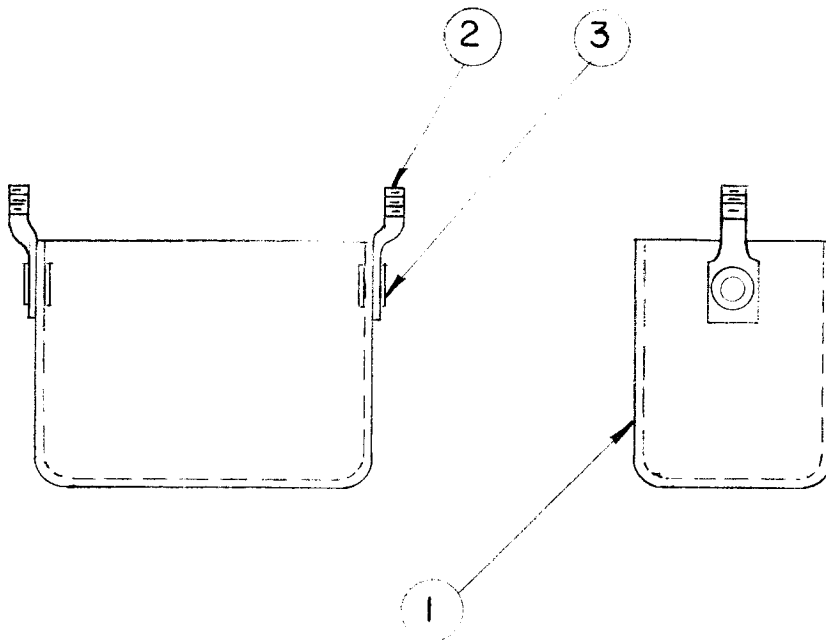
A

MAXIMUM ALLOWABLE TOLERANCES HAVE BEEN DETERMINED AND DEVIATIONS WILL BE CAUSE FOR REJECTION. REMOVE ALL BURRS AND SHARP EDGES

REQ
PER
UNIT

USED ON

REQ PER UNIT	MODEL	PROJECT NO.	ASS'Y. NO.	DATE
2	DMK-4	140	A-129	9-20-52



2	3	EY-100-1	EYELET, FLAT FLANGE	
2	2	SC-107-1	BOLT, SPADE	
1	1	FP-100	SHIELD, CAN	
REQ.	ITEM	PART NO.	DESCRIPTION	SYMBOL
STOCK SIZE			THE TECHNICAL MATERIEL CORP. MAMARONECK, NEW YORK	
MATERIAL				
WEIGHT PER PC.				
TYPE & TEMPER			9-20-52	
HEAT TREAT. SPEC.			DRAWN	
FINISH & SPEC. NO.			ELEC. DES. APP.	
			MECH. DES. APP.	
			CHECKED	
			FINAL APPROVAL	
			A-128	
			A	

A	1	ITEM 2 WAS SC-106-1	9/24/54	1	JANOR	ASC	
ISSUE	ITEM	CHANGED FROM	DATE	CN. NO.	DRAFTS	CHECKER	ENG. APP.

TOLERANCES		SCALE
ALL OTHERS	DEC. DIM. \pm FRAC. DIM. \pm ANGULAR DIM. \pm	DRILL, PUNCH, COMMERCIAL STOCK SIZES AND MANUFACTURERS TOLERANCES ARE NOT INCLUDED.

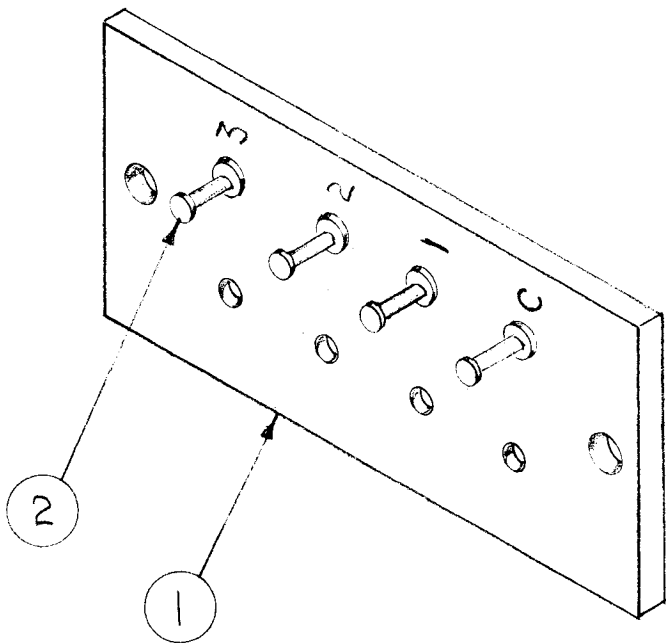
IF IT IS FOUND DESIRABLE TO CHANGE ANY TOLERANCE OR OTHER DETAIL SPECIFIED ON THIS DRAWING NOTIFY THE PURCHASER PROMPTLY.

RELEASED

A-144 A

MAXIMUM ALLOWABLE TOLERANCES HAVE BEEN DETERMINED AND DEVIATIONS WILL BE CAUSE FOR REJECTION. REMOVE ALL BURRS AND SHARP EDGES

AMT PER UNIT	MODEL	USED ON		
		PROJECT NO.	ASS'Y. NO.	DATE
1	XFK		A-600	12-2-53
1	LFA	109	A-147	9-16-52



REF: LD132

A	2	TE-105-4	TERMINAL LUG.	
1	1	PX 107	BOARD, TERMINAL	
REQ.	ITEM	PART NO.	DESCRIPTION	SYMBOL
#			THE TECHNICAL MATERIEL CORP. MAMARONECK, NEW YORK	
STOCK SIZE				
#		#	BOARD, TERM. XTAL OVEN	
MATERIAL		WEIGHT PER PC.	SUB ASSEMBLY.	
#			C.D.D. 9-16-52	
TYPE & TEMPER			A. J. J.	
#			WDC 10-21	
HEAT TREAT. SPEC.			CHECKED	FINAL APPROVAL
#			A-144 A	
FINISH & SPEC. NO.				

A	LD132 REF ADDED	10.1866	17064	WFW			
ISSUE	ITEM	CHANGED FROM	DATE	CN. NO.	DRAFTS	CHECKER	ENG. APP.
TOLERANCES		SCALE					
ALL OTHERS	DEC. DIM. \pm FRAC. DIM. \pm ANGULAR DIM. \pm	DRILL, PUNCH, COMMERCIAL STOCK SIZES AND MANUFACTURERS TOLERANCES ARE NOT INCLUDED.					

IF IT IS FOUND DESIRABLE TO CHANGE ANY TOLERANCE OR OTHER DETAIL SPECIFIED ON THIS DRAWING NOTIFY THE PURCHASER PROMPTLY.

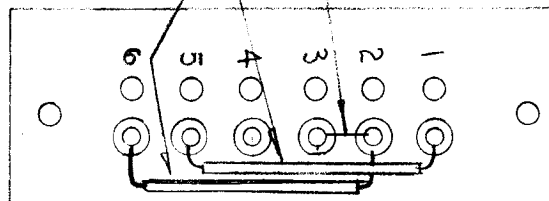
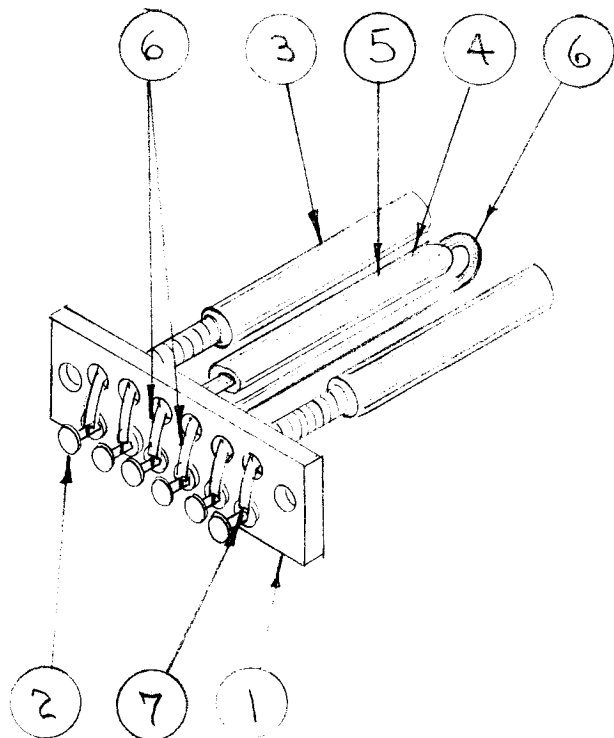
RELEASED

A-146 C

MAXIMUM ALLOWABLE TOLERANCES HAVE BEEN DETERMINED AND DEVIATIONS WILL BE CAUSE FOR REJECTION. REMOVE ALL BURRS AND SHARP EDGES

USED ON

MODEL	PROJECT NO.	ASS'Y. NO.	DATE
XFK		A-600	12/1/53
LFA	109	A-627	10-23-52
		A-147	



REF: LD132

REQ.	ITEM	PART NO.	DESCRIPTION	SYMBOL
3"	9	PX-10A-5-034	INSULATION, SLEEVING	BROWN
4"	8	WL-100-1	WIRE, BUSS BAR	
X	7	BS-100	SOLDER, SOFT	
6"	6	MWC-22(7)B9	CABLE, INSULATED - GLASS BR.	WHITE
3"	5	PX-10A-5-375	INSULATION, SLEEVING	
1	4	SS-100-2	SWITCH, SENSITIVE.	
2	3	RR-102-1	ELEMENT, XTAL OVEN	
6	2	TE-105-4	TERMINAL LUG.	
1	1	PX-108	BOARD, TERMINAL - ELEMENT	

THE TECHNICAL MATERIEL CORP.
MAMARONECK, NEW YORK

BOARD, TERMINAL - ELEMENT
HEATER

SUB ASSEMBLY

C.D.D. 9-16-52

A. J. J. [Signature]

DRAWN

ELEC. DES. APP.

MECH. DES. APP.

WDC 10-27

CHECKED

FINAL APPROVAL

A-146 C

ISSUE	ITEM	CHANGED FROM	DATE	CN. NO.	DRAFTS	CHECKER	ENG. APP.
C		LD132 ADDED	10-18-66	17064	W.H.W.	[Signature]	[Signature]
B		JUMPER 6-2 WAS 6-3	6-17-65	14280	D.V.V.	[Signature]	[Signature]
A	1	Item (6) Was SRIR 3/5(7)22U99	12-26-61	6097	E.B.	[Signature]	[Signature]

TOLERANCES

SCALE

ALL OTHERS

DEC. DIM. ±
FRAC. DIM. ±
ANGULAR DIM. ±

DRILL, PUNCH, COMMERCIAL STOCK
SIZES AND MANUFACTURERS
TOLERANCES ARE NOT INCLUDED.

FINISH & SPEC. NO.

IF IT IS FOUND DESIRABLE TO CHANGE ANY TOLERANCE OR OTHER DETAIL SPECIFIED ON THIS DRAWING NOTIFY THE PURCHASER PROMPTLY.

RELEASED

A 148

MAXIMUM ALLOWABLE TOLERANCES HAVE BEEN DETERMINED AND DEVIATIONS WILL BE CAUSE FOR REJECTION. REMOVE ALL BURRS AND SHARP EDGES

USED ON

MODEL

PROJECT NO.

ASS'Y. NO.

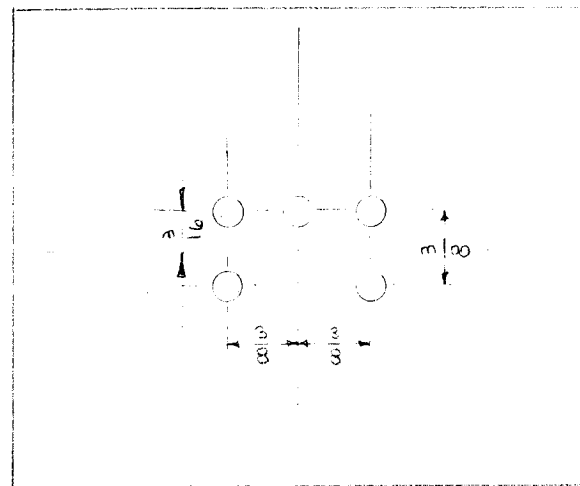
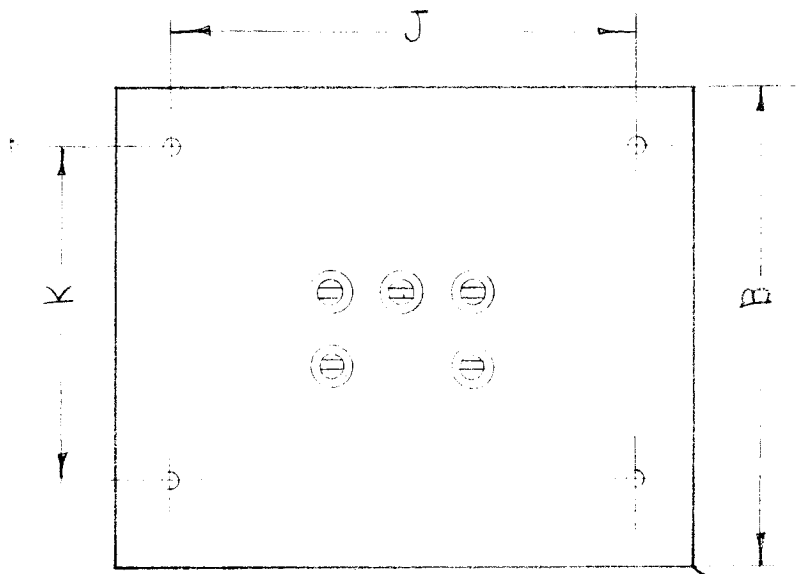
DATE

TR 019

109

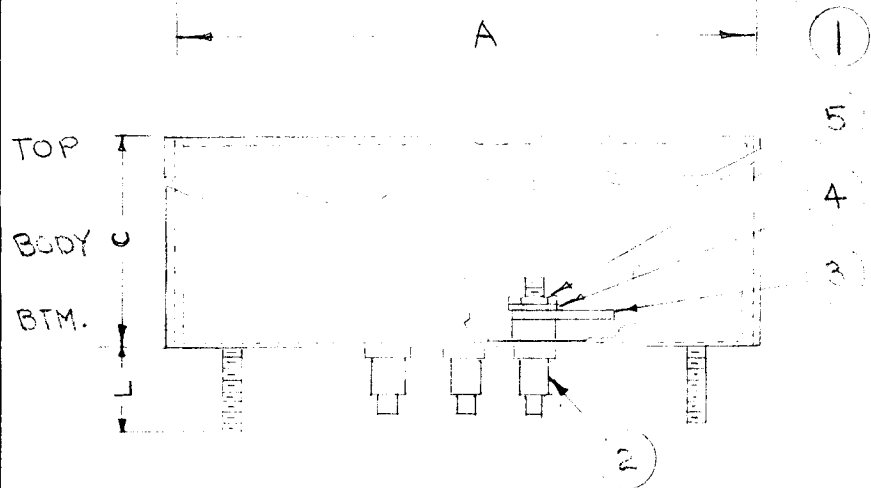
A-148

10-21-54



BOTTOM DRILLING PLAN

NOTE:
1- LUGS SHALL BE ORIENTATED RAD- IALLY WITH SOLDER HOLE ON OUTSIDE (ITEM 3)
2- EACH ASSEMBLY CONSISTS OF THREE PARTS, BOTTOM, BODY AND TOP, COMPLETE WITH ASSEMBLED TERM- INALS.



5	5	NTH0440 BR6	NUT, HEXAGONAL
5	4	LWS 04 MRK	LOCKWASHER, SPLIT
5	3	TE-110-2	LUG, SOLDER
5	2	TE-101-1	BUSHING, SLOTTED HEAD
1	1	BX-100-12 S	CASE, TRANSFORMER

REQ.	ITEM	PART NO.	DESCRIPTION	SYMBOL
			THE TECHNICAL MATERIEL CORP. MAMARONECK, NEW YORK	
STOCK SIZE			CASE AND TERMINALS	
MATERIAL		WEIGHT PER PC.	SUB ASSEMBLY	
TYPE & TEMPER		CDD-9-18 52	A. J. J.	mm
HEAT TREAT. SPEC.		M.H.S.	#	
FINISH & SPEC. NO.		DRAWN		
		ELEC. DES. APP.		MECH. DES. APP.
		CHECKED		FINAL APPROVAL
				A-148

ISSUE	ITEM	CHANGED FROM	DATE	CN. NO.	DRAFTS	CHECKER	ENG. APP.
TOLERANCES			SCALE				
ALL OTHERS			DRILL, PUNCH, COMMERCIAL STOCK SIZES AND MANUFACTURERS TOLERANCES ARE NOT INCLUDED.				
DEC. DIM. ±							
FRAC. DIM. ±							
ANGULAR DIM. ±							

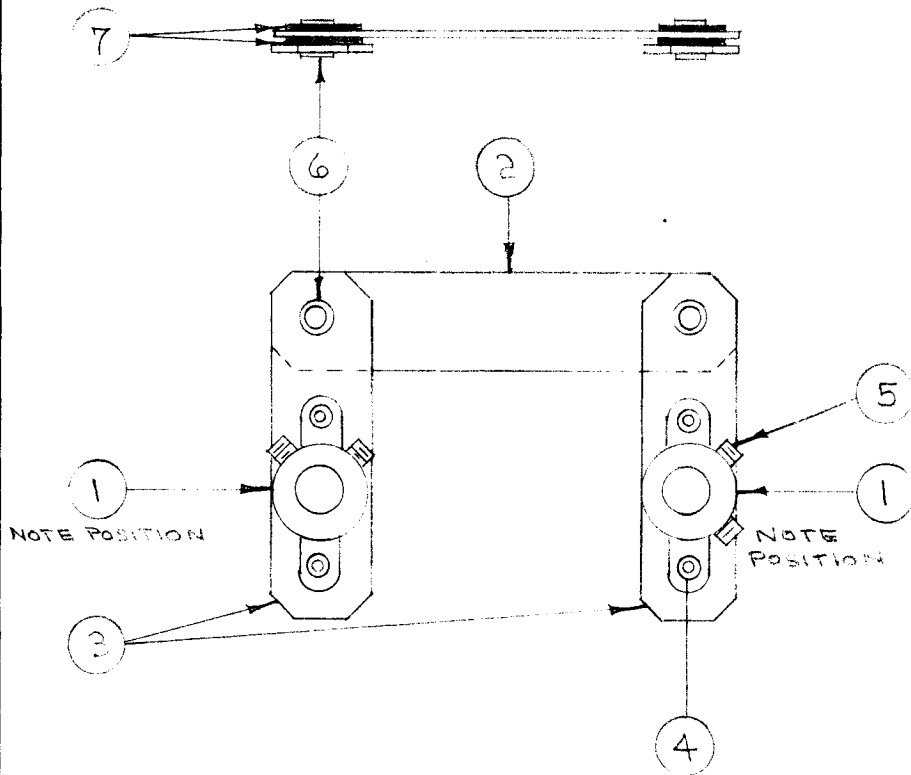
IF IT IS FOUND DESIRABLE TO CHANGE ANY TOLERANCE OR OTHER DETAIL SPECIFIED ON THIS DRAWING NOTIFY THE PURCHASER PROMPTLY.

A-150

MAXIMUM ALLOWABLE TOLERANCES HAVE BEEN DETERMINED AND DEVIATIONS WILL BE CAUSE FOR REJECTION. REMOVE ALL BURRS AND SHARP EDGES

USED ON

MODEL	PROJECT NO.	ASS'Y. NO.	DATE
DMK-4	140	A-167	6-13-52



REQ.	ITEM	PART NO.	DESCRIPTION	SYMBOL
4	7	FW04MBC	WASHER, FLAT	
2	6	EY-100-2	EYELET	
4	5	AN-565-6-4	SCREW, HEADLESS SET	
4	4	EY-100-1	EYELET	
2	3	MS-141	ARM COUPLING	
1	2	MS-142	ARM COUPLING	
1	1	MC-105	COUPLING (PARTS A & B)	

REQ.	ITEM	PART NO.	DESCRIPTION	SYMBOL
STOCK SIZE			THE TECHNICAL MATERIEL CORP. MAMARONECK, NEW YORK	
MATERIAL				
WEIGHT PER PC.			COUPLING ASSEMBLY	
TYPE & TEMPER			HFO SWITCH	
HEAT TREAT. SPEC.			CDR 6-13-52	
FINISH & SPEC. NO.			DRAWN	
			ELEC. DES. APP.	
			MECH. DES. APP.	
			CHECKED	
			FINAL APPROVAL	
			A-150	

ISSUE	ITEM	CHANGED FROM	DATE	CN. NO.	DRAFTS	CHECKER	ENG. APP.
TOLERANCES			SCALE				
ALL OTHERS			DRILL, PUNCH, COMMERCIAL STOCK SIZES AND MANUFACTURERS TOLERANCES ARE NOT INCLUDED.				
DEC. DIM. ±							
FRAC. DIM. ±							
ANGULAR DIM. ±							

IF IT IS FOUND DESIRABLE TO CHANGE ANY TOLERANCE OR OTHER DETAIL SPECIFIED ON THIS DRAWING NOTIFY THE PURCHASER PROMPTLY.

RELEASED

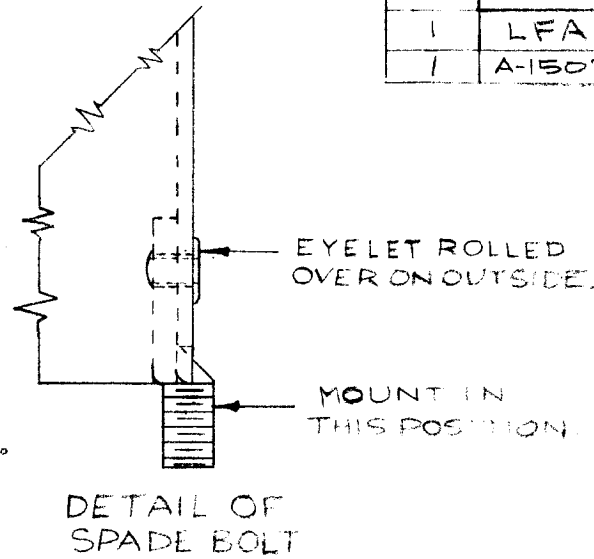
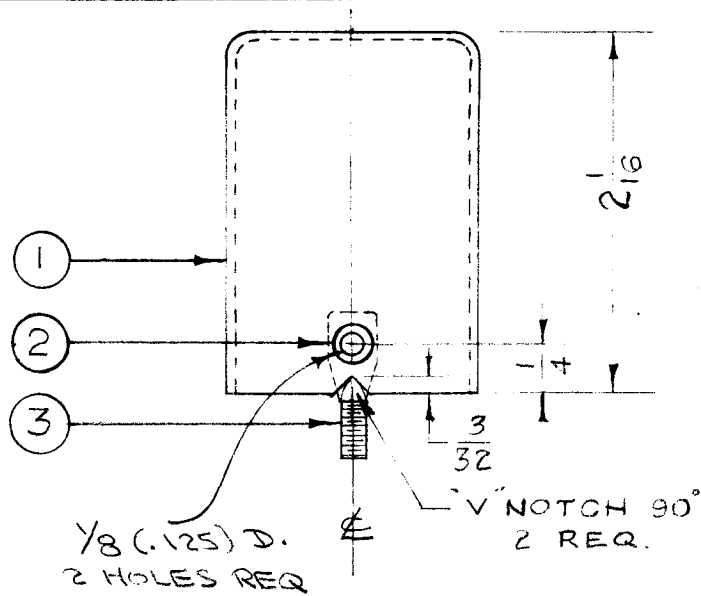
A 163

C

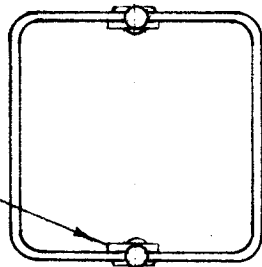
MAXIMUM ALL WABLE TOLERANCES HAVE BEEN DETERMINED AND DEVIATIONS WILL BE CAUSE FOR REJECTION. REMOVE ALL BURRS AND SHARP EDGES

USED ON

QTY	MODEL	PROJECT NO.	ASS'Y. NO.	DATE
1	FFR-2	104	A-164	9-29-52
1	LFA	109	A-203	10-24-52
1	A-1507	MSR-3	A-1506	4-10-58



SPADE BOLT ON INSIDE



REQ.	ITEM	PART NO.	DESCRIPTION	SYMBOL
2	3	SC-107-1	BOLT SPADE, OFFSET TYPE	
2	2	EY-100-1	EYELET	
1	1	FP-108-1	CAN (MODIFIED AS SHOWN)	
---			THE TECHNICAL MATERIEL CORP. MAMARONECK, NEW YORK	
STOCK SIZE				
---			CAN	
MATERIAL				
---			ASSEMBLY	
WEIGHT PER PC.				
---			G.T.O. <i>10/8/52</i>	
TYPE & TEMPER				
---			DRAWN <i>10/02/52</i>	
HEAT TREAT. SPEC.				
---			CHECKED	
FINISH & SPEC. NO.				
				FINAL APPROVAL <i>[Signature]</i>
				A-163 C

ISSUE	ITEM	CHANGED FROM	DATE	CN. NO.	DRAFTS	CHECKER	ENG. APP.
C	1	Model GPR Deleted Use A-1033-1 for GPR.	10/19/56	3	HAZ	HAZ	HAZ
B	1	HOLES SIZE	8/1/56	2	HAZ	HAZ	HAZ
A	2	ITEM 1 WAS MS-143	1-30-56	1	P3	HAZ	HAZ
	1	DIMENSIONS ADDED					

TOLERANCES		SCALE FULL SIZE
ALL OTHERS	DEC. DIM. $\pm .005$ FRAC. DIM. $\pm \frac{1}{64}$ AN ULAR DIM. \pm	DRILL, PUNCH, COMMERCIAL STOCK SIZES AND MANUFACTURERS TOLERANCES ARE NOT INCLUDED.

IF IT IS FOUND DESIRABLE TO CHANGE ANY TOLERANCE OR OTHER DETAIL SPECIFIED ON THIS DRAWING NOTIFY THE PURCHASER PROMPTLY.

RELEASED

A-170

B

MAXIMUM ALLOWABLE TOLERANCES HAVE BEEN DETERMINED AND DEVIATIONS WILL BE CAUSE FOR REJECTION. REMOVE ALL BURRS AND SHARP EDGES

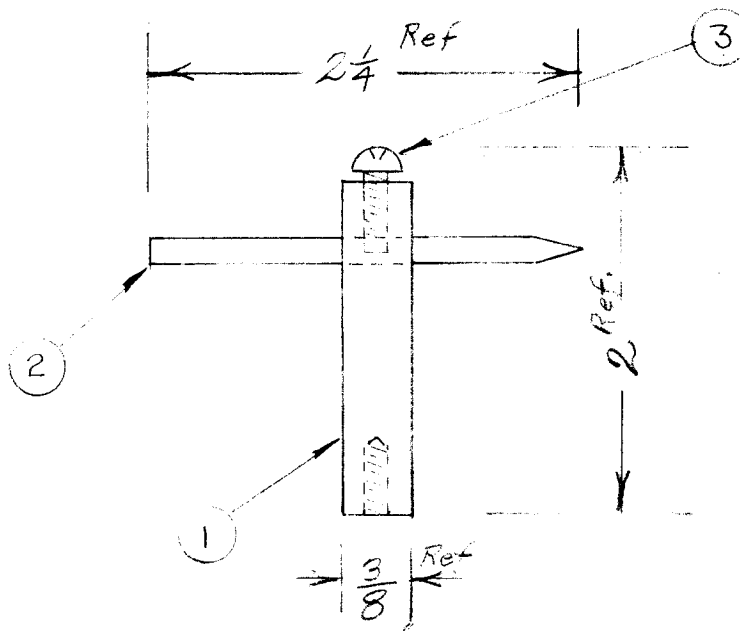
USED ON

MODEL

PROJECT NO.

ASS'Y. NO.

DATE



1	3	SCRPO632SN6	Screw Machine	
1	2	PM-103	SPARK ROD	
1	1	PM-721-3BNH.75	Foot	
REQ.	ITEM	PART NO.	DESCRIPTION	SYMBOL
			THE TECHNICAL MATERIEL CORP.	
			MAMARONECK. NEW YORK	
			LIGHTNING ARRESTOR	
		STOCK SIZE		
		MATERIAL	WEIGHT PER PC.	
		TYPE & TEMPER	L.H.	
		HEAT TREAT. SPEC.		
		FINISH & SPEC. NO.		
			DRAWN	ELEC. DES. APP.
			MECH. DES. APP.	
			CHECKED	FINAL APPROVAL

B	1	ITEM(1) WAS PM-102	7-3-63	9403				
A	1	Item 3 Was SCRPO632SC6	11-13-61	5862	LB			
ISSUE	ITEM	CHANGED FROM	DATE	CN. NO.	DRAFTS	CHECKER	ENG. APP.	

TOLERANCES		SCALE
ALL OTHERS	DEC. DIM. ± FRAC. DIM. ± ANGULAR DIM. ±	DRILL, PUNCH, COMMERCIAL STOCK SIZES AND MANUFACTURERS TOLERANCES ARE NOT INCLUDED.

A-170

B