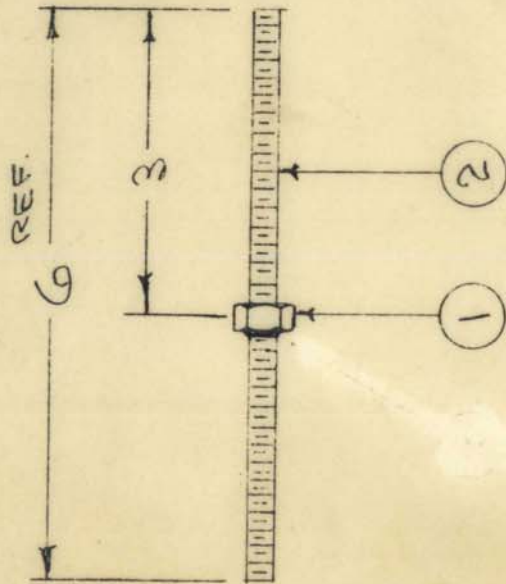


# STANDARD DRAWING

REQ. PER UNIT  
USED ON  
MODEL  
DATE

A-100



STAKE WITH EPOXY

REQ. ITEM	DESCRIPTION	PART NO.	SYMBOL
1	STUD, CONT. THD.	SM2520BP6.000	
1	NUT, HEX-	NTH2520BN12	
THE TECHNICAL MATERIEL CORP. MAMARONECK, NEW YORK			
STUD ASSEMBLY			
MATERIAL			
FINISH & SPEC. NO.			
ELEC. DES. APP.			
MECH. DES. APP.			
CHECKED			
DRAWN			
FINAL APPROVAL			
A-100			
L			

ITEM	DATE	CH. NO.	DRAFTS	CHECKER	ENG. APP.
ITEM 1 WAS G1/4	7-2-80	21820	G1/4	EP	EP
ITEM 3 (BS 100) DEL.	6-15-72	20733	GE	JAL	JAL
STAKE NOTE ADDED	6-16-64	11562	A.M.	JAL	JAL
* NOTE ADDED	3-9-64	9502	AM.	JAL	JAL
EXTEN. CHG. SEE EMN	2-28-62	6453	GG	JAL	JAL
S135 NICKEL WAS S105CADMIUM	12/10/56	6	VB	JAL	JAL
ITEM 1 WAS NTH2520B514	12/10/56	5	VB	JAL	JAL
3" WAS 3/8"	8/15/56	—	—	JAL	JAL
REPRAWN	—	—	—	JAL	JAL
NO CHANGE	—	—	—	JAL	JAL

ISSUE ITEM	CHANGED FROM	SCALE:
TOLERANCES		
MAXIMUM ALLOWABLE TOLERANCES HAVE BEEN DETERMINED AND ANY DEVIATIONS WILL BE CAUSE FOR REJECTION. REMOVE ALL BURRS AND SHARP EDGES		
DEC. DIM. ±		
FRAC. DIM. ±		
ANGULAR DIM. ±		