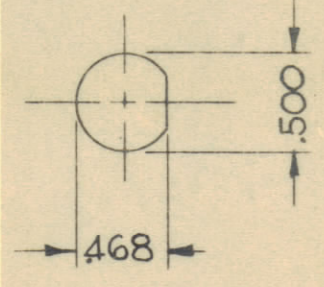


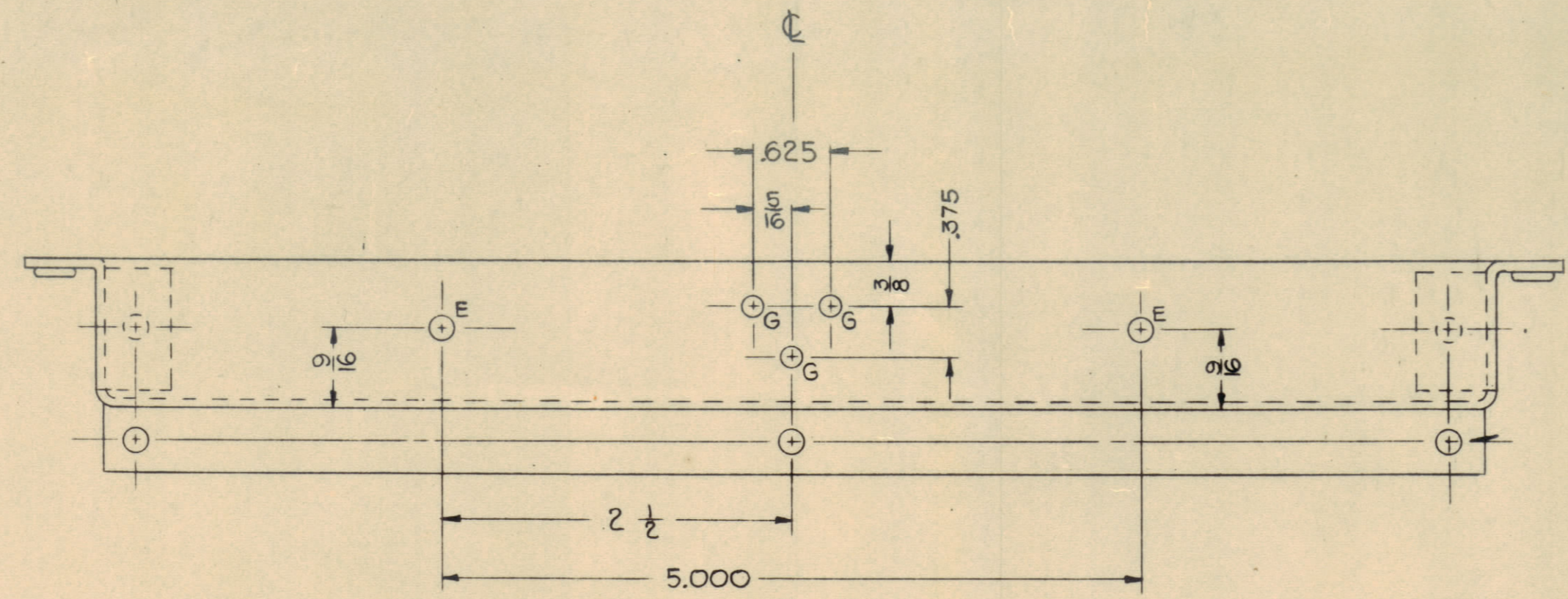
NOTICE: When Government drawings, specifications, or other data are used for any purpose other than in connection with a definitely related Government procurement operation, the United States Government thereby incurs no responsibility, nor any obligation whatsoever; and the fact that the Government may have formulated, furnished, or in any way supplied the said drawings, specifications, or other data is not to be regarded by implication or otherwise as in any manner licensing the holder or any other person or corporation, or conveying any rights or permission to manufacture, use, or sell any patented invention that may in any way be related thereto.

NEXT ASSEMBLY 1ST USED ON

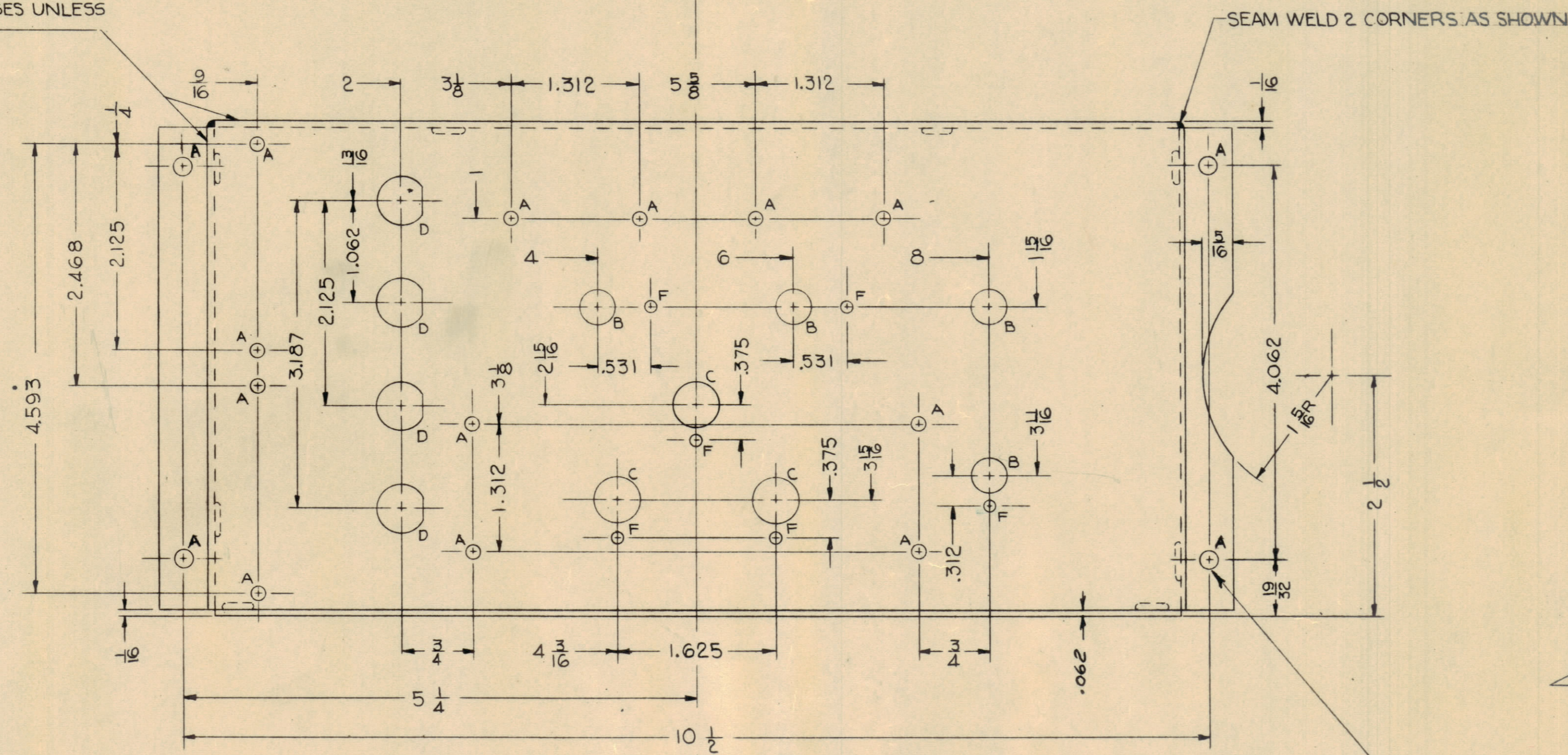
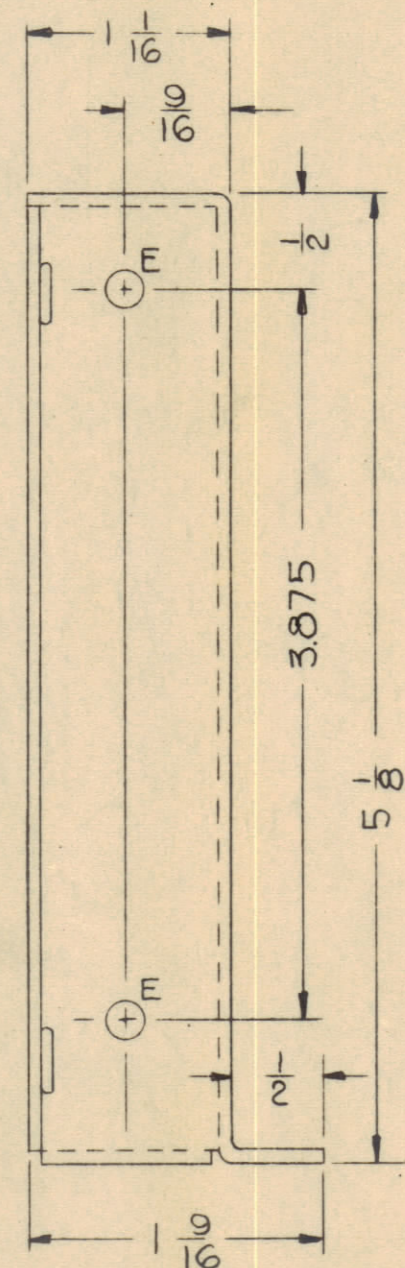
REVISIONS			
SYM	DESCRIPTION	DATE	APPROVAL



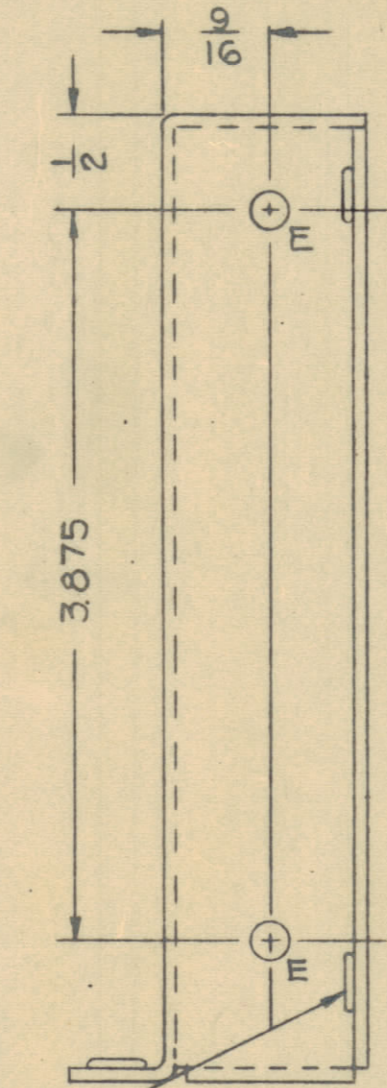
DETAIL D



ALL ONE ARROW DIMENSIONS ARE TAKEN FROM THESE 2 EDGES UNLESS OTHERWISE SPECIFIED



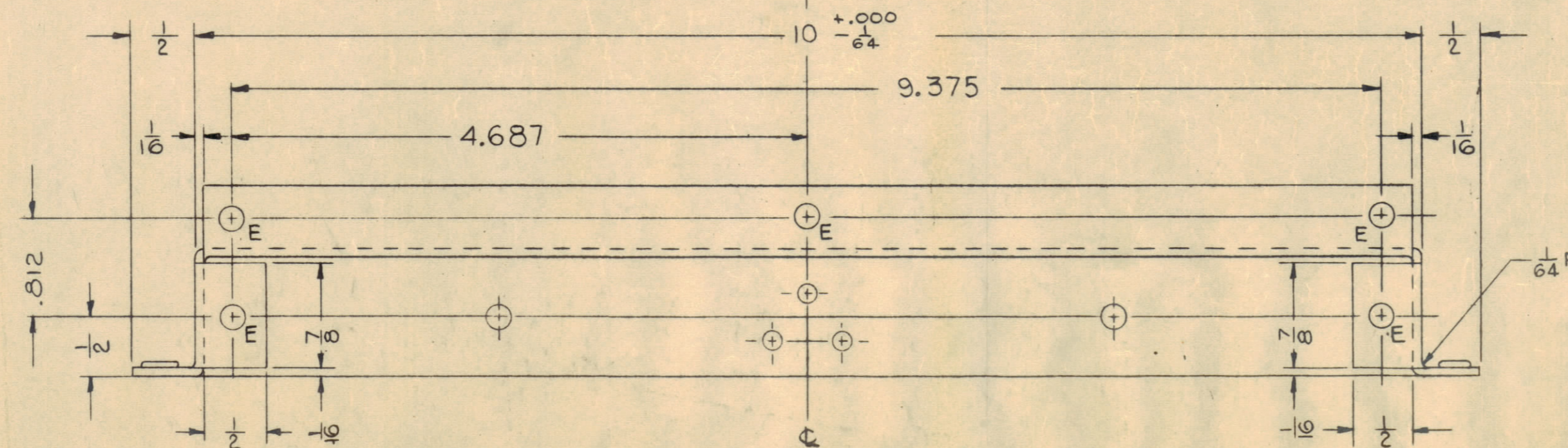
HOLE LEGEND		
SYM	SIZE	QTY
A	.156 DIA	16
B	.390 DIA	4
C	.500 DIA	3
D	SEE DETAIL D	4
E	.187 DIA	11
F	.125 DIA	6
G	.180 DIA	3



INSTALL (1) CL-632-2 FASTENER IN EACH "E" HOLE (15) (SUPPLIED BY PENN ENGINEERING & MANUFACTURING CORP, DOYLESTOWN PENN OR EQUAL) (AFTER PAINTING)

DRILL AT FINAL ASSEMBLY 4/16" HOLES IN CORNERS

- MATL -AL- CONDITION 1/2 H PER SPEC QQ-A-561
- 1 CAUSTIC DIP
 - 2 ZINC CHROMATE PRIMER PER SPEC JAN-TT-P-656B (SUPPLIED BY MAAS & WALDSTEIN CO NEWARK NJ, # 918, OR EQUAL)
 - 3 NAVY GRAY BAKING ENAMEL PER US NAVY SPEC 52E4 TYPE C SUPPLIED BY MAAS & WALDSTEIN CO NEWARK NJ, # 68252, OR EQUAL (INSIDE ONLY) GLOSS-35-40 UNITS



NOTICE TO PERSONS RECEIVING THIS DRAWING

THE TECHNICAL MATERIEL CORPORATION claims proprietary right in the material disclosed herein. This drawing is issued in confidence for engineering information only and may not be reproduced or used to manufacture anything shown herein without permission from THE TECHNICAL MATERIEL CORPORATION to the user. This drawing is loaned for mutual assistance and is subject to recall at any time.

Property of:
THE TECHNICAL MATERIEL CORPORATION
MAMARONECK, NEW YORK

REQD	PART NO.	DESCRIPTION	MATL	MATL SPEC	UNIF. WT. ZONE
UNLESS OTHERWISE SPECIFIED	AUTHENTICATION	SUB CHASSIS			
DIMENSIONS ARE IN INCHES	DRAWN TMC	5FO-2 REGENERATOR			
TOLERANCES ON	TRACED	MD-958			
FRACTIONS ± 1/64	CHECKED TMC	SCALE 1/4"			
DECIMALS ± .005	VERIFIED	WHEN REFERRING TO THIS DRAWING STATE DRAWING NO. AND ISSUE SYMBOL			
ANGLES ± 1°-0'	APPD				
COMMERCIAL TOLERANCES	REVD				
APPLY TO STOCK SIZES	DATE 9 NOV 48				

THE TECHNICAL MATERIEL CORPORATION
MAMARONECK, NEW YORK

MD-958