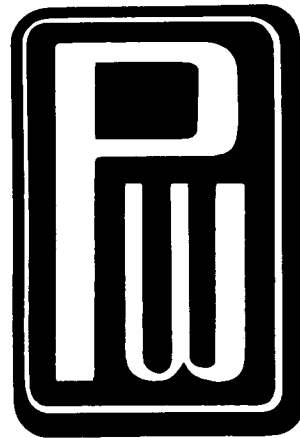


FACILITIES of



PRESS WIRELESS

MANUFACTURING COMPANY INC.

Executive Offices: Rockville, Conn.

Plants at: Rockville, Conn. and West Newton, Mass.

PRESS WIRELESS

MANUFACTURING COMPANY INC.

F O R E W O R D

Press Wireless Manufacturing Company, Inc. was incorporated in 1941 in the State of Massachusetts under the original name of Milliken Machine Company with all operations located in one plant in West Newton, Massachusetts. The facilities of the former Press Wireless Manufacturing Corporation of Hicksville, New York were acquired in 1948 and the corporate name changed to Press Wireless Manufacturing Company, Inc.

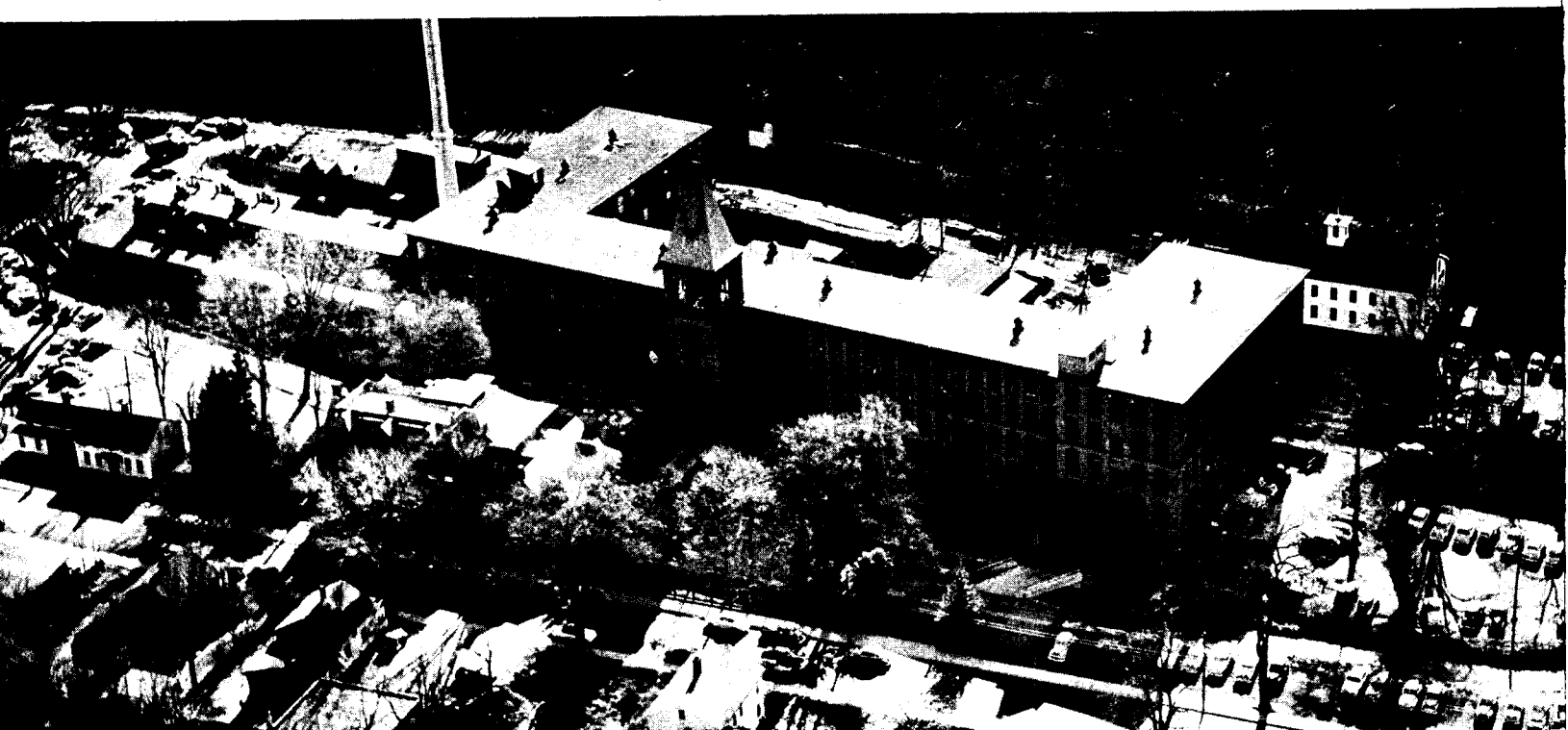
In 1952 the controlling interest in Press Wireless Manufacturing Company, Inc. was acquired by La-Pointe Electronics Inc. and the facilities of the Hicksville Division were moved to a more spacious plant in Rockville, Connecticut. This plant was adapted to the quantity production of electronic and precision electro-mechanical parts and equipment.

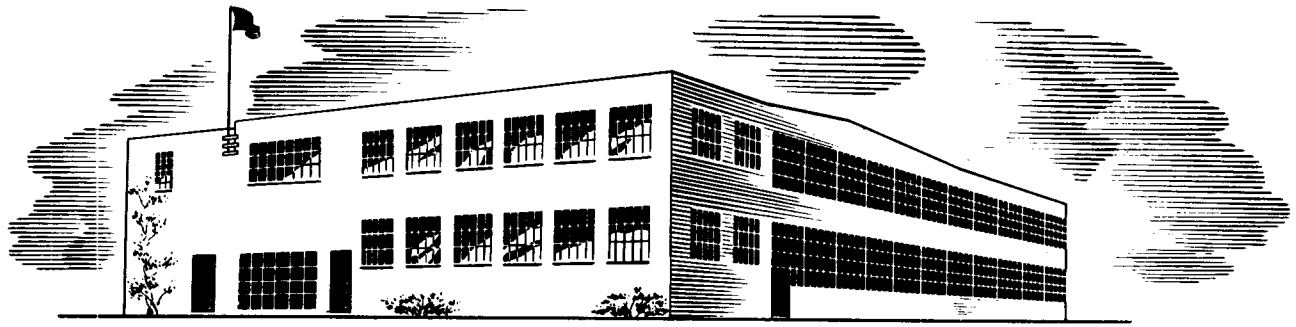
The main endeavor of the company has been directed towards the development, design and manufacture of communication equipment, electronic test equipment, radar components and precision electro-mechanical devices for both commercial and military use.

Press Wireless transmitting and radioteletype equipment is in use today throughout the world. In fact, the general use of the Moduplex, Duoflex and Frequency Shift systems of communications is a result of Press Wireless developments.

The expanded facilities of Press Wireless Manufacturing Company, Inc., including both the Rockville and West Newton Divisions, are available to serve your needs in the development, design and manufacture of all types of electronic and precision electro-mechanical equipment.

Aerial View, Rockville Division and Main Offices





West Newton, Massachusetts Division

ROCKVILLE DIVISION

The Rockville Division of Press Wireless is equipped to handle the engineering, design and production of electronic equipment, electro-mechanical devices, sheet metal and precision machined parts in quantities ranging from pilot runs to full scale quantity production. This plant provides a total of approximately 156,000 square feet of manufacturing space exclusive of a separate administration building which houses the executive offices of both Press Wireless and LaPointe Electronics Inc.

The engineering development laboratory with its associated design and drafting departments occupies approximately 6,600 square feet in one wing of the factory building.

The tool room, precision machine shop and sheet metal shop occupy approximately 35,000 square feet and the remainder of the factory building is used for the assembly, wiring and test of electronic equipment and television accessories as the work load necessitates.

Adequate storage facilities are available in a separate building with about 5,000 square feet of area located within a few hundred feet of the main factory building.

Both motor and rail transportation facilities are available for convenient and rapid shipment of materials to all major cities in the United States.

The extensive facilities of the engineering laboratory, machine shop and sheet metal shop are indicated by the listings of the major items of equipment on the following pages.

WEST NEWTON DIVISION

The West Newton Division of Press Wireless includes a separate research and development labora-

tory with approximately 3,000 square feet of area in a modern fire-proof building with an ADT protective system and a factory building with approximately 10,000 square feet equipped with machine facilities for model shop, pilot run and medium quantity production of specialized electronic and precision electro-mechanical equipment.

This plant is fully staffed with competent engineers, laboratory technicians and skilled machinists necessary for the handling of development projects and the fabrication of specialized equipment in the communication, navigation, radar and electronic test equipment fields.

Close cooperation and liaison between the West Newton and Rockville plants insure the most effective exchange not only of facilities but also of engineering talent as the need arises.

PERSONNEL

The personnel of Press Wireless has kept abreast of the advancement in techniques and the expansion of facilities. From management, supervision and engineering to machinists, technicians and assemblers, the hiring of new personnel and a continued training program has kept the caliber of the employees of Press Wireless at a high level. Fortunately both West Newton and Rockville are in areas where there is an adequate supply of skilled personnel, both for engineering and production.

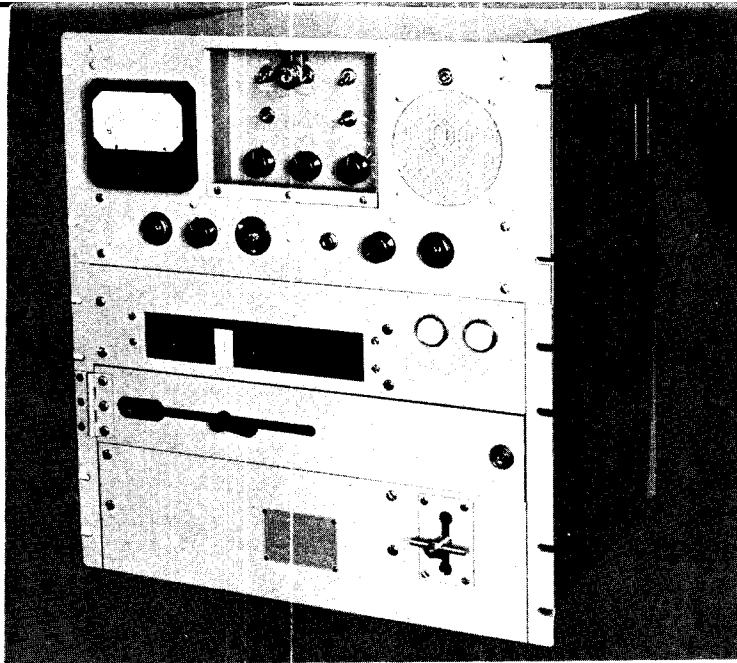
The research and development staff is of the highest calibre and since the basis for a major portion of the Press Wireless operation is electronic engineering, the administration head is himself a professional engineer. A competent group of design, mechanical and production engineers is also attributed to the engineering staffs of both plants.

ROCKVILLE DIVISION

TYPICAL ELECTRONIC PRODUCTS

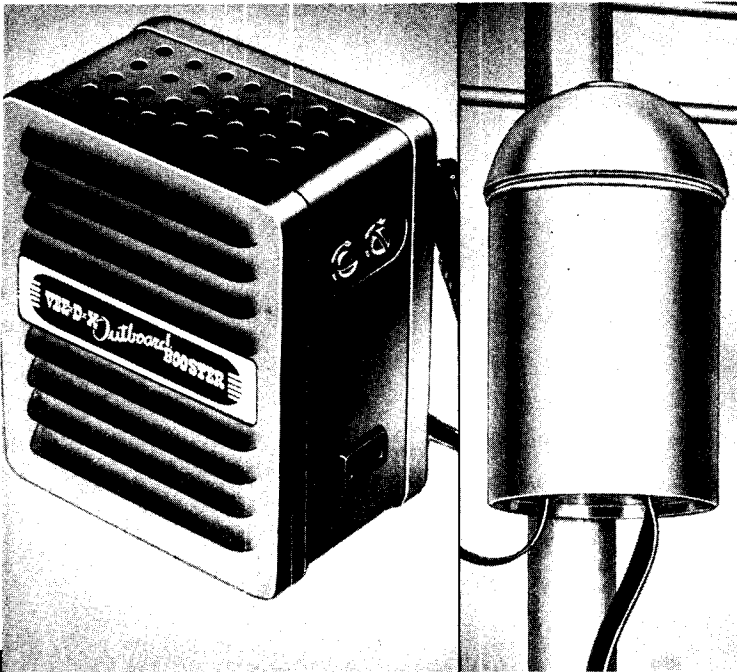
RECORDER — REPRODUCER

This magnetic tape Recorder-Reproducer was developed and designed by Press Wireless to meet the exacting requirements of the Armed Services for a recorder capable of continuous recording for a period of 24 hours on a single roll of tape.



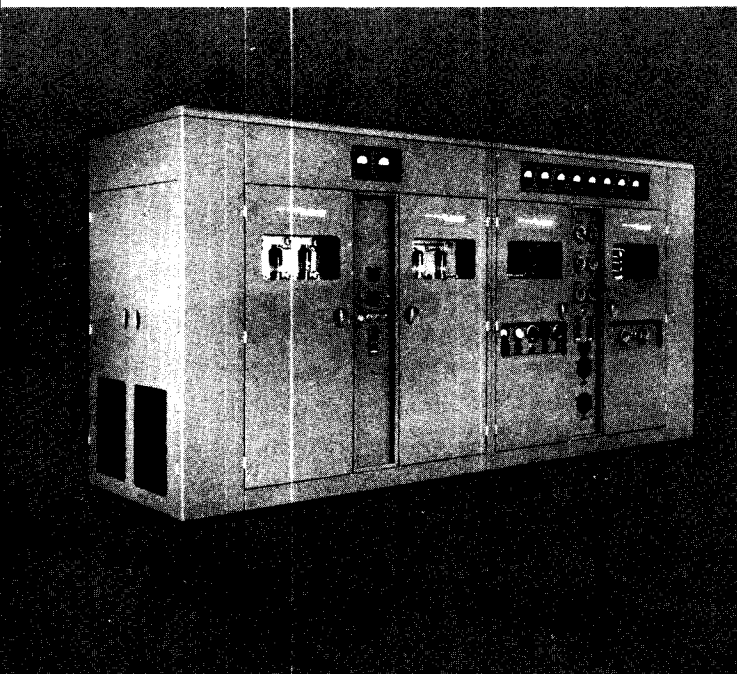
TELEVISION BOOSTER

TV boosters manufactured by Press Wireless and distributed by the VEE-D-X Division of LaPointe Electronics, Inc. require careful circuit design and rigid quality control during production in order to provide dependable operation with high gain and a minimum of background noise.



TRANSMITTER

One of the many transmitters designed and produced by Press Wireless to meet exacting requirements set forth by both the commercial markets and government agencies. Rigid control over design, production and test guaranteed against failures in the field.



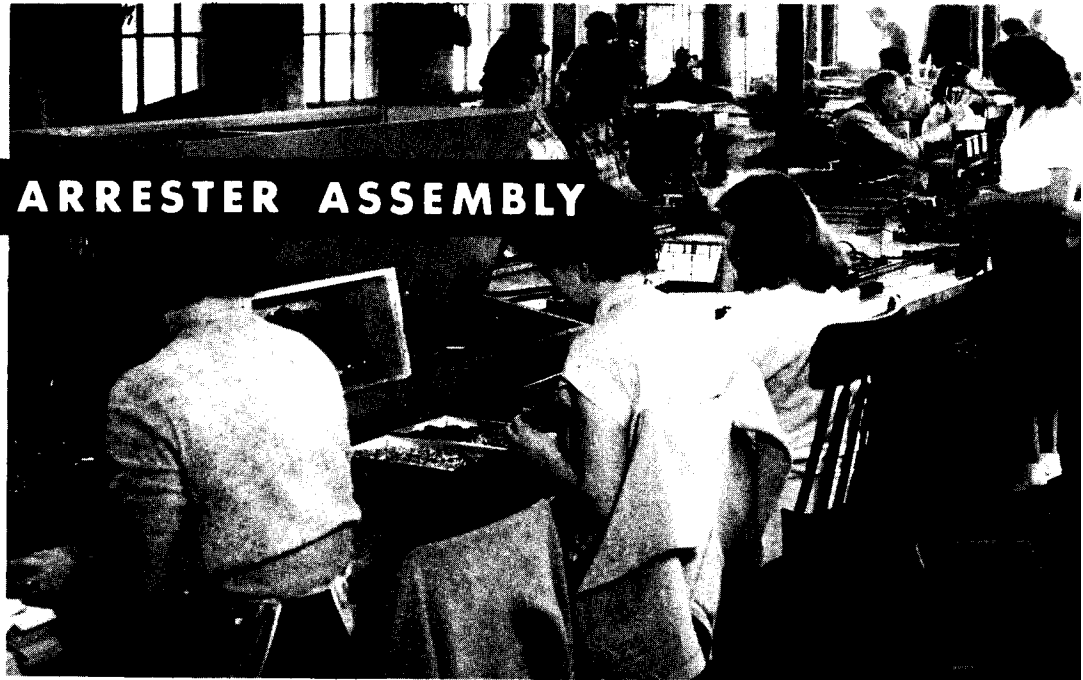
BOOSTER ASSEMBLY

Wiring and Assembly
of Television
Pre-Amplifiers



LIGHTNING ARRESTER ASSEMBLY

Assembly and Sealing
of Lightning
Arrester Units



RECORDER ASSEMBLY

Wiring and Assembly
of 24-hour
Recorder-Reproducers



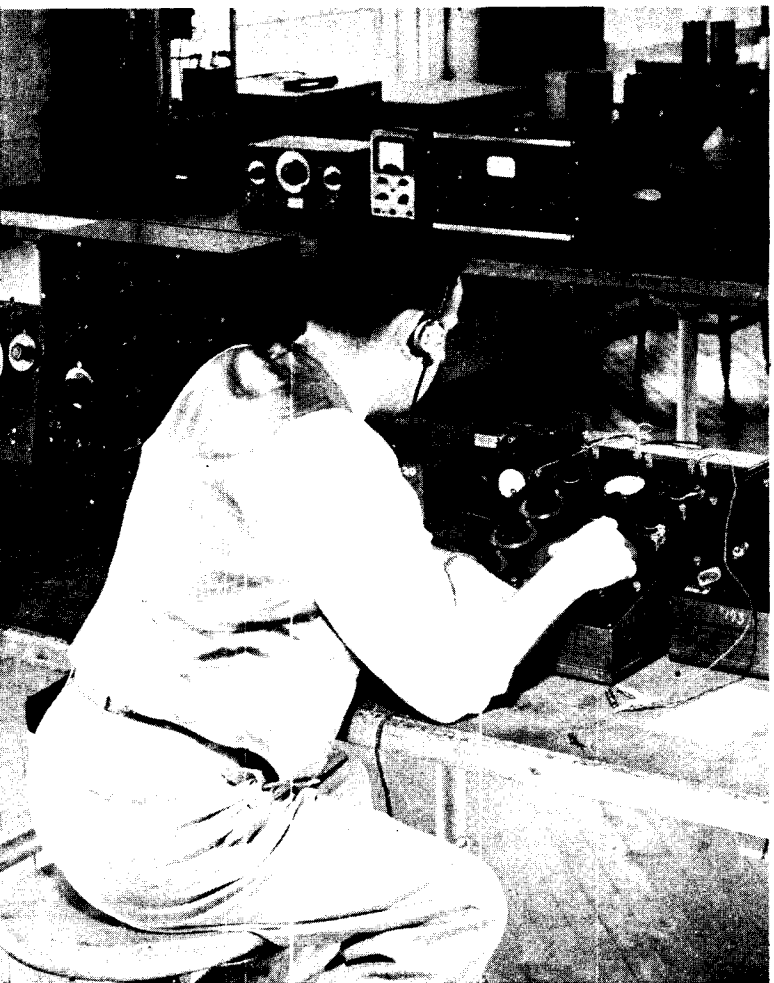


Checking television antenna performance on roof laboratory.

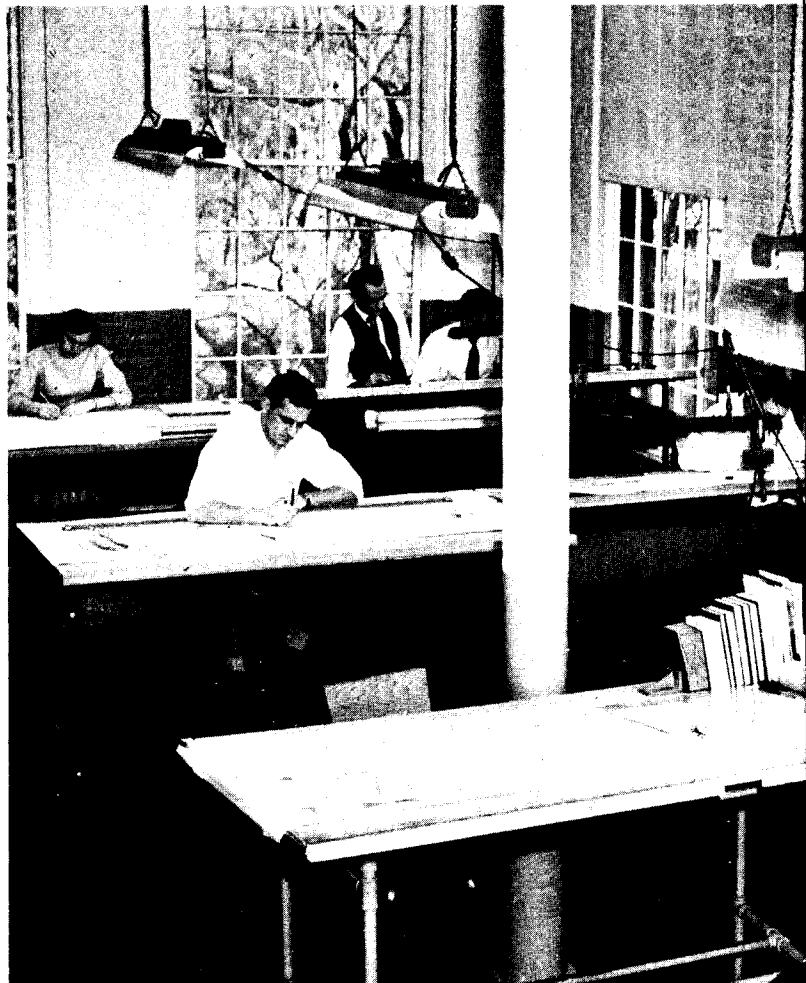


Research and development laboratory.

Electrical Testing by member of engineering Staff



Mechanical and Electrical Drafting to commercial and Government specifications



Rockville Division

LABORATORY and TEST EQUIPMENT

The following list of test equipment is typical of that which is available for engineering development and production test.

SIGNAL GENERATORS

- 1 Ferris Instrument, Model 22-A
- 1 Ferris Instrument Standard, Model 16-C
- 1 General Radio Standard, Type 605-B
- 1 Hewlett Packard Audio, Model 205-A
- 1 Hewlett Packard, Model 205-AG

DECADE BOXES

- 2 General Radio, Type 602-K
- 1 General Radio, Type 602-J
- 2 General Radio, Type 219-K
- 2 Clarostat, Model 240

OSCILLATORS

- 1 Clough-Brengle Audio, Model 79-D
- 1 Harvey Radio Lab., Model 205-TS
- 1 General Radio Interpolation, Type 617-C
- 1 General Radio Wide Range Beat Frequency, Type 700-A
- 1 RCA Beat Frequency, No. 154
- 3 Hewlett Packard, Model 200-B

INDUCTANCE BOXES

- 1 General Radio Standard, Type 106-L
- 1 General Radio Standard, Type 106-K
- 1 General Radio Standard, Type 106-J
- 1 General Radio Standard, Type 106-G
- 1 General Radio Variable, Type 107-K
- 1 General Radio Variable, Type 107-J
- 1 General Radio Standard, Type 106-M

CATHODE RAY OSCILLOSCOPES

- 3 RCA, No. 160-B
- 1 Dumont Laboratory, Type 247
- 1 Dumont Laboratory, Type 208-B
- 1 Dumont Laboratory, Type 241

WAVE METERS

- 1 General Radio, Type 419-A
- 2 General Radio, Type 566-A
- 1 General Radio Precision, Type 224-L
- 1 General Radio Precision, Type 724-A

GENERATORS

- 1 Measurements Corp. Square Wave, Model 71
- 1 General Radio Frequency Harmonic, Type 271
- 1 50 Cycle Generator Set

TEST BRIDGES

- 1 General Radio Capacitance, Type 740
- 1 General Radio Vacuum Tube, Type 561-D
- 1 General Radio R. F., Type 916-C
- 3 General Radio Impedance, Type 65A-A

FIELD STRENGTH METERS

- 1 Ferris Instrument, Model 32-A
- 1 Ferris Instrument Power Unit for Model 32-A
- 1 Ferris Instrument, Model 32-B
- 1 W. E. Field Strength Meter, Model 58

MISCELLANEOUS ITEMS

- 1 Leeds and Northrup Test Set 5430-A
- 1 Ballantine Lab. Multiplier 402-A
- 1 Ballantine Lab. Multiplier 954
- 2 Hewlett Packard Power Supply, Model 710-A
- 1 Hewlett Packard Wave Analysis
- 1 Ferris Instrument External Calibrator, Type 32-XA5
- 1 Test Set TS-15A/AP
- 1 Bendix Frequency Meter
- 1 Measurements Corp. High Impedance Probe
- 1 Daven 6c Transmission Set
- 2 Daven Volume Indicator, Type 911-A
- 1 Ratheon Voltage Stabilizer, Type VR3
- 1 Hammarlund Super Pro Receiver
- 1 Hammarlund BC-779A
- 2 Coil Winding Machines

STANDARDS, ETC.

- 1 General Radio Attenuation Box, Type 249H
- 4 General Radio Standard Resistors, Types 663-D, 663-G, 663-E, 663-F
- 4 General Radio Standard Capacitors, Types 505-L, 505-K, 505-G, 505-F
- 2 General Radio Wave Filters, Type 830
- 1 General Radio Precision Condenser, Type 222
- 1 General Radio Frequency Standard, Type 698-A

VOLTMETERS

- 1 Alfred W. Barber Vacuum Tube
- 1 General Radio Vacuum Tube, Type 726-A
- 2 Weston, D.C. Model 1
- 3 Weston, Model 341
- 1 Ballantine Lab. Electronic 300

VOLT-OHMMETERS

- 1 Radio City Products, Model 461
- 1 Precision, Model 856-G
- 1 Hickok, Model 202-B
- 3 RCA Voltohmysts Junior

MISC. METERS

- 3 Precision AC Ammeters, Series J
- 1 Boonton Radio Q Meter, Type 160-A
- 1 General Radio Output Power Meter, Type 783-A
- 2 Weston Milliammeters, D.C. Model 1
- 2 Weston Wattmeters, Model 310
- 2 Weston Ammeters, Model 370
- 1 Weston Micro Ammeter, Model 430
- 1 Weston Milliammeter, Model 622

ENVIRONMENTAL TEST EQUIPMENT

- Model 1H Bowser Climatic Test Chamber
- Type — 76



PRECISION MACHINE PRODUCTS

MAIN ROTOR SPINDLES

This operation is one of the production jobs done in the precision machine parts shop. These parts require 54 machining operations with very close tolerances and exceptionally fine finishes. Shanks and holes are ground to less than 20 micro inch finish and final inspection requires 69 different gaging points.



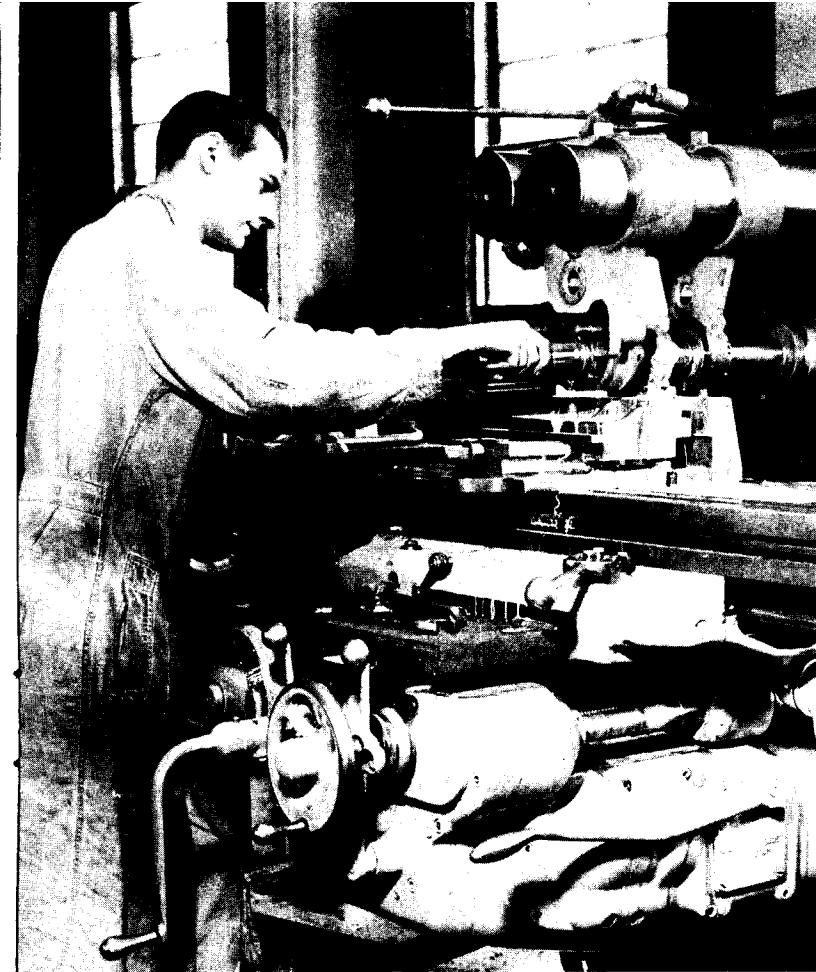
TAIL ROTOR HUBS

Another important helicopter part made from 4130 heat treated steel. In operation these parts are subjected to extremely high stresses and close tolerances and fine finishes are essential. This is just one of many important parts which is being processed in our plant for one of America's foremost helicopter manufacturers.

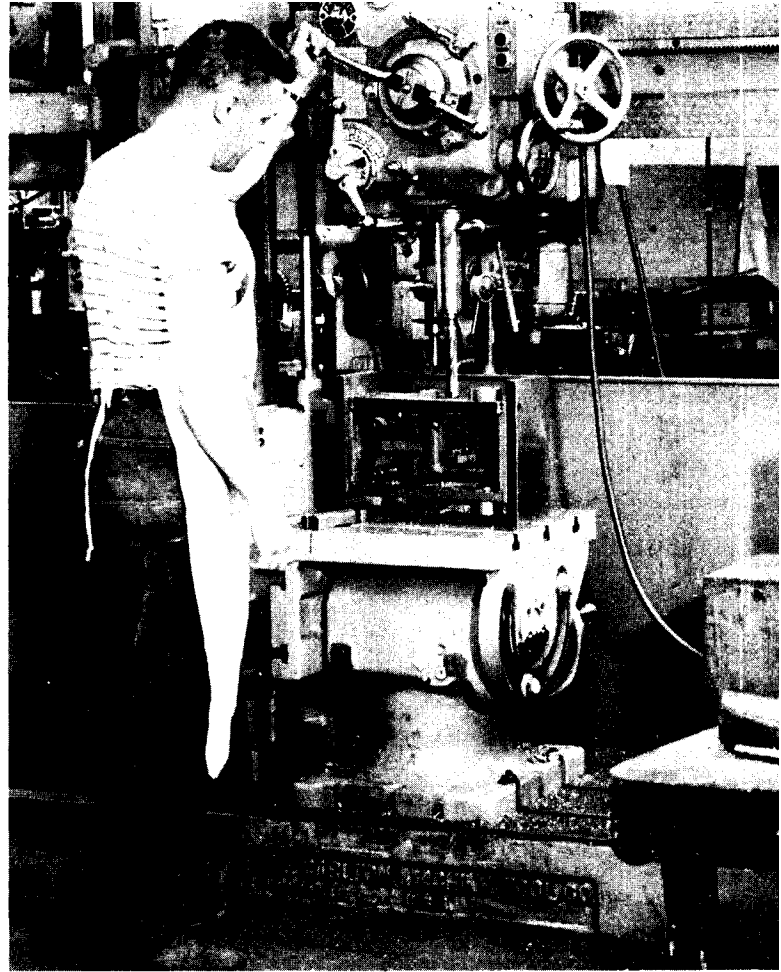


PROPELLER AND ACCESSORY PARTS

For use in the de-icing equipment on propellers, these parts and many other aircraft and jet accessory parts are made in our plant in production quantities. Small assemblies for airframes are also manufactured as well as experimental runs in limited quantities.



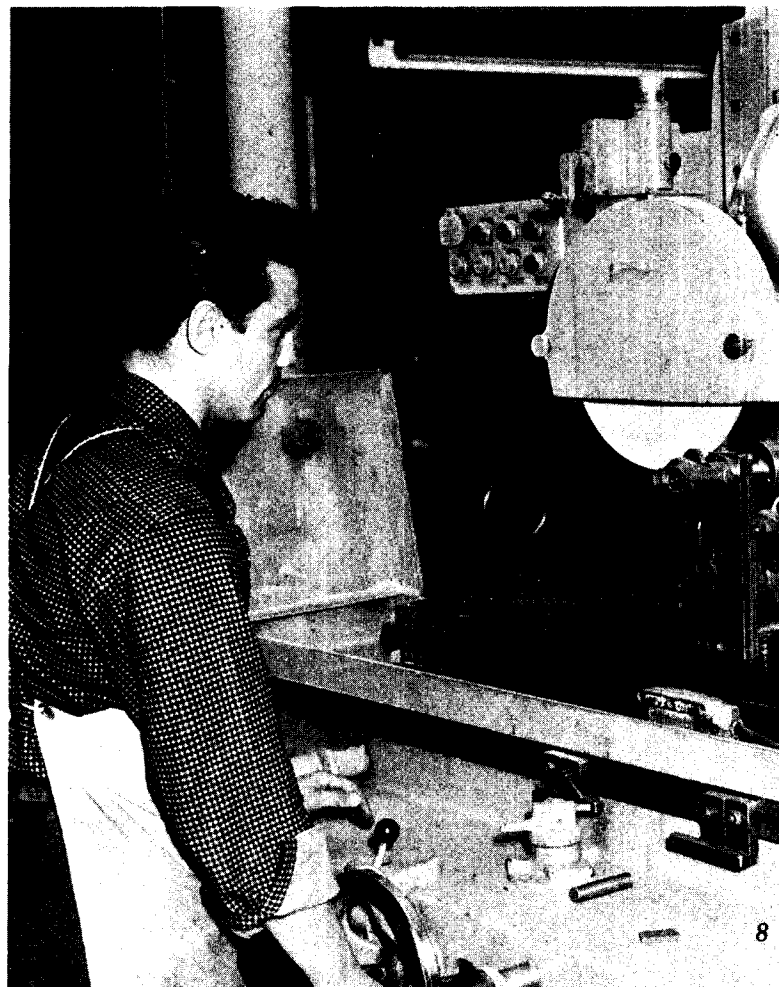
Milling operation

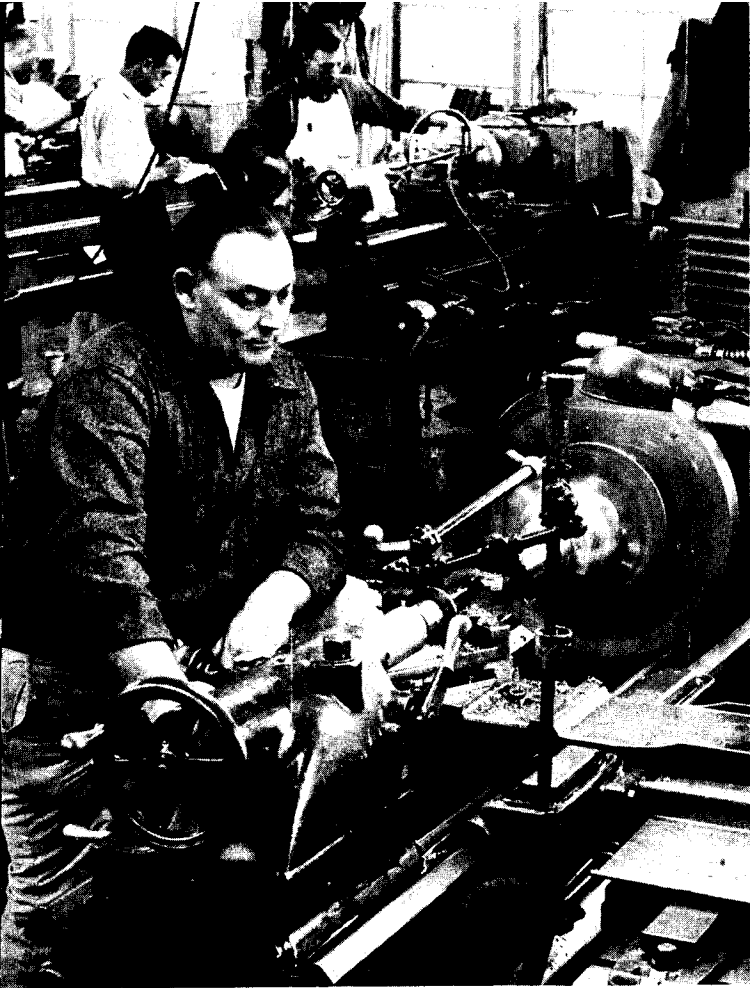


Carlton Radial Drill

Linematic Radial Drill

Surface Grinding



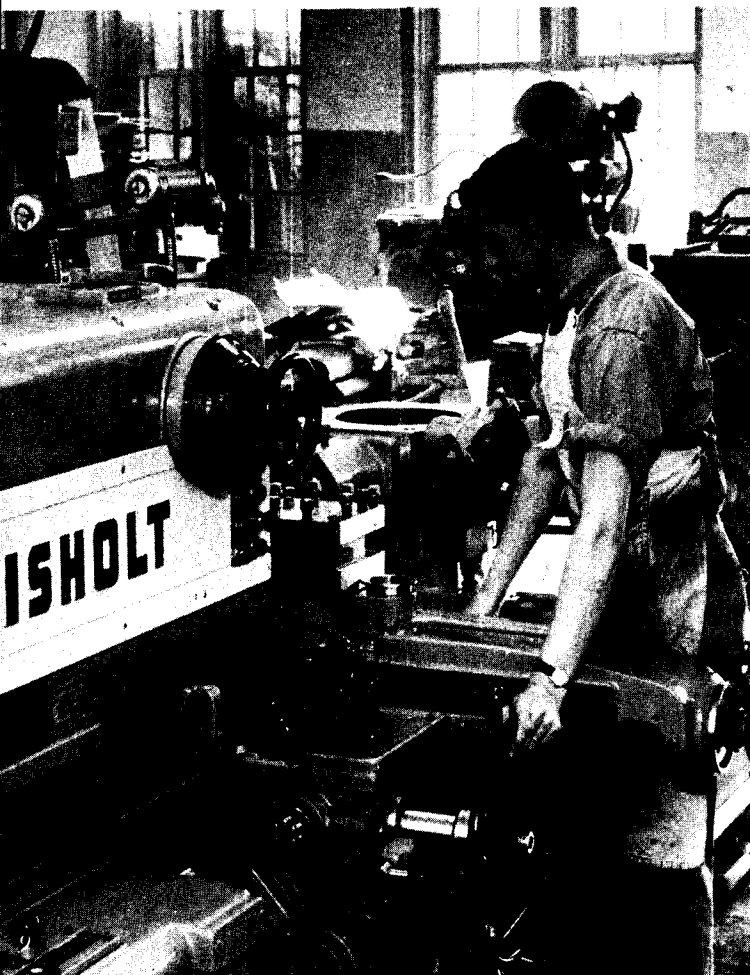


Lathe Operations

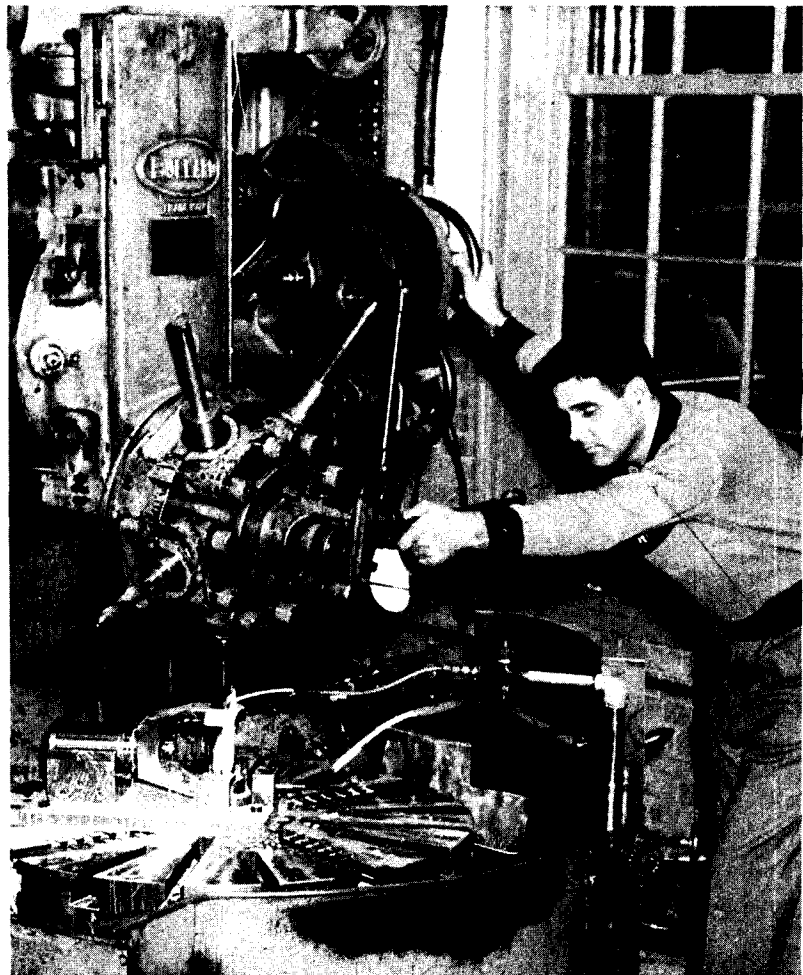


Pratt and Whitney Jig Borer

Gisholt Turret Lathe



Bullard Vertical Turret Lathe



Rockville Division

PRECISION MACHINE SHOP FACILITIES

Press Wireless facilities for the manufacture of precision parts, from raw material to finished product, are represented in the following equipment.

JIG BORERS

- 1 Pratt & Whitney #2A jig borer with 20" rotary table
- 1 Bridgeport jig borer 10" x 42" table

HORIZONTAL MILLING MACHINES

- 1 #4 Cincinnati 48" x 16" table
- 1 #1B Milwaukee 36" x 10" table
- 1 #2 Milwaukee 36" x 12" table
- 1 Van Norman Duplex 36" x 10" table
- 1 Van Norman Duplex 30" x 10" table
- 1 #2 B & S Universal 36" x 12" table
- 1 Burke Milling Machine 18" x 6" table
- 1 LeBlond Milling Machine 30" x 10" table
- 1 4/36 Cincinnati Hydromatic 48" x 16" table
- 1 4/36 Cincinnati Hydromatic duplex 48" x 16" table
- 1 Bristol Hand Miller 18" x 16" table

VERTICAL MILLING MACHINES

- 1 #2 Brown & Sharpe 36" x 12" table
- 1 #2 Milwaukee 36" x 12" table
- 3 Bridgeport 1 h.p. head 42" x 12" table
- 1 Bridgeport slotting Attach. 36" x 12" table
- 3 Bridgeport 1/2 h.p. head 36" x 12" table
- 1 Vernon 18" x 6" table

LATHES (Engine)

- 1 Pratt & Whitney G.H. 18" x 30" capy.
- 2 Hendey G. H. 16" x 30" capy.
- 1 Hendey cone head 12" x 30" capy.
- 1 LeBlond G. H. 14" x 30" capy.
- 1 Sebastian G. H. 14" x 36" capy.
- 1 Whitcomb-Blaisdell 18" x 36" capy.
- 1 LeBlond 36" x 48" capy.
- 3 Lodge & Shipley G. H. 18" x 30" capy.
- 1 Sidney 16 speed G. H. 28" x 120" capy.
- 4 Stark Bench Lathes 10" x 18"
- 7 South Bend Lathes 10" x 18"

CYLINDRICAL GRINDERS

- 1 Norton Universal 10" x 36"
- 1 Norton Type C 10" x 24"
- 1 #5 Brown & Sharpe 10" x 24"
- 1 Van Norman 10" x 18"
- 1 #10 Brown & Sharpe 6" x 24"
- 1 #1 Landis 10" x 18"
- 1 Landis 12" x 18"
- 1 Landis 16" x 36"
- 1 Landis 18" x 36"

SURFACE GRINDERS

- 1 2A Reid 10" x 18"
- 2 #2 Reid 12" x 18"

- 1 #5 Brown & Sharpe 10" x 24"
- 1 Do-All Surface Grinders 10" x 24"
- 1 Heald Rotary 18" chuck
- 1 Arter Rotary 8" chuck
- 2 Galmeyer & Livingston 12" x 36"

TOOL GRINDING EQUIPMENT

- 1 #2 Norton Tool and Cutter Grinder
- 2 K. O. Lee tool grinder
- 2 Delta Carbide tool grinders
- 1 Excello Center Lapping Machine

INTERNAL GRINDERS

- 1 #72 Heald 16" swing
- 1 #74 Heald 28" swing
- 1 #72 Heald extended base 28" swing

THREAD GRINDERS

- 1 J & L internal thread grinder 12" dia. 5" length
- 1 J & L external 6" x 30"

THREAD MILLER

- 1 Hanson & Whiting 12" x 24"

MISCELLANEOUS GRINDERS

- 1 Taylor-Fenn wet tool grinder
- 1 Du-More #7
- 1 Du-More #14
- 4 Bench tool grinders
- 2 Precise high-speed spindles
- 2 Jarvis flexible shaft grinders
- 3 Du-More flexible shaft grinders

DRILL PRESSES

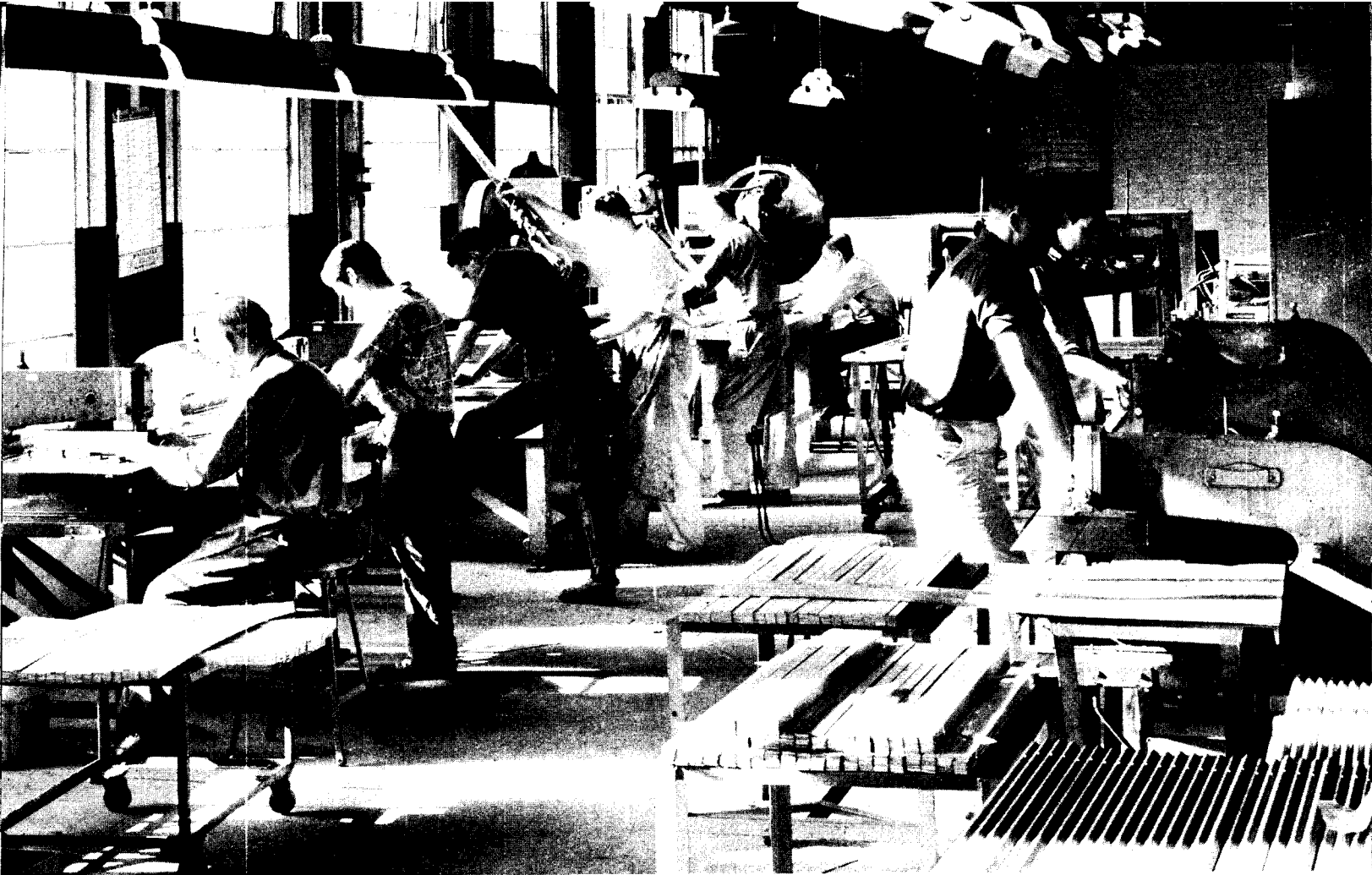
- 2 3' Carlton radial drills
- 1 Walker Turner radial
- 1 Walker Turner 3 spindle
- 1 Walker Turner 2 spindle
- 3 Walker Turner 1 spindle floor
- 3 Delta 1 spindle bench
- 1 Cincinnati 1 spindle 2 1/2" capy. 24" table
- 1 Cincinnati 1 spindle 2" capy. 20" table
- 1 Defiance 1 spindle 2 1/2" capy. 24" table
- 1 Cincinnati radial 19" col. 6' arm

TURRET LATHES

- 1 #7 Jones-Lamson 2 1/2" bar 16" swing
- 1 Libby chuck 24" swing
- 1 Acme chuck 16" swing
- 1 Bardons & Olivers chuck 14" swing
- 2 Foster Fastermatics chuck 28" swing
- 1 Bullard vertical 36" swing
- 2 Warner Swasey 1 1/2" bar 10" chuck
- 1 Gisholt 3L turret lathe 24" chuck

MACHINES ON ORDER BUT NOT DELIVERED

- 2 #5 Cincinnati Dual Power vertical milling machine
- 2 Warner & Swasey turret lathes 3 1/2" x 4 1/2" capy.
- 1 Blanchard surface grinder 42" table
- 1 Bullard vertical turret lathe 54" capy.
- 1 Cincinnati Hydrotel 28" x 96" table



Punching and stamping operations in Sheet Metal Shop

Rockville Division

SHEET METAL FACILITIES

Because of the diversity of the following equipment, it is possible to effectively fabricate either for short runs or extended production.

SHEARS

- 1 Niagara #BL8 8-foot Squaring Shear with Electric Motor and Controls
- 1 Niagara #152F 4-foot Squaring Shear with Air Cylinder and Controls
- 1 Di-Acro #2 9-inch Shear
- 1 Buffalo Forge #22 5-inch Lever-Operated Splitting Shear
- 1 Portable Electric Shears

SAWS

- 1 Wells #8 Metal Saw, 8-inch Diameter Round Stock
- 1 Delta #34-307 10-inch Tilting Table Circular Saw—with Metal-cutting Blades
- 1 Delta #28-305 14-inch Metal Cutting Bandsaw

DRILL PRESSES

- 1 Excelsior 21-inch Heavy Duty with Automatic Feed and #4 Morse Taper Spindle
 - 1 Atlas 14-inch Floor Type High Speed
 - 1 Atlas 14-inch Floor Type Low Speed
 - 1 Craftsman 14-inch Bench Type High Speed
 - 1 Craftsman 14-inch Bench Type Low Speed
 - 1 Ettco-Emrick #1B Tapping Attachment
- Adequate Selection of Drills, Taps, Countersinks, Counterbores, Hole-Saws, Fly-Cutters, etc.

PUNCH PRESSES

- 1 Bliss Model 4C 52-ton 24-inch Throat with Electric Motor and Controls
- 1 Waterbury-Farrell 25-ton 4-inch Throat with Electric Motor and Controls
- 1 Kidder #38 10-ton 24-inch Throat Lever-Operated
- 1 Whitney-Jensen #130 10-ton 18-inch Throat with Electric Motor and Controls
- 8 Whitney-Jensen #58 5-ton 18-inch Throat Kick Punch Presses

Adequate Punches and Dies including Whistler Die Set—12 inch by 24 inch Capacity with Multiple Assorted Fractional Size Punches, Greenlee Punches,

4 inch 6-louvre die, 3 inch and 5 inch, single louvre dies and assorted round, square, rectangular, round-end slot, cluster and numbering punches.

BRAKES

- 1 Chicago Steel #335 6-foot Press Brake
- 1 Whitney-Jensen #247 18-inch Press Brake
- 1 Chicago Steel 10-foot Standard Hand Brake
- 1 Chicago Steel 4-foot Hand Box and Pan Brake
- 1 Di-Acro #1 6-inch Brake

WELDERS

- 1 Ace (Peer) #103D 30 KVA Spot-Welder
- 1 Alphil Model F. 20 KVA Spot-Welder—with Square D Weld Timer and Welder Contactor
- 1 Lincoln Shield Arc 200 Ampere Horizontal Type Welder
- 1 Lincoln Shield Arc 150 Ampere Vertical Type Welder
- 1 Banner Model PS50A Spot Welder—50 KVA
Adequate Prest-O-Weld Oxy-Acetylene Welding Equipment

SANDERS, GRINDERS, ETC.

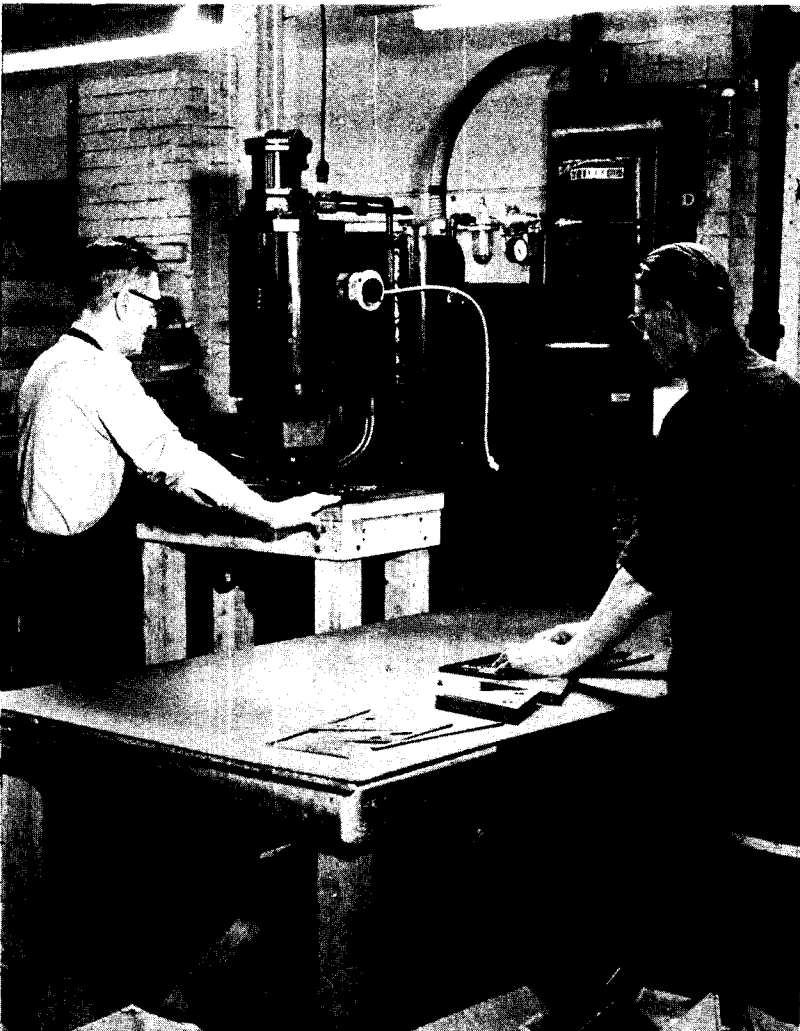
- 1 United States Electrical Tool Company Utility Ball Bearing 5 H.P. Buffing Jack
- 1 Black and Decker 10-inch Ball Bearing Bench Grinder
- 1 Delta-Milwaukee Toolmaker Surface Grinder
- 1 Delta 6-inch Vertical Belt Sander
- 1 Belke Model A. Burnishing Barrel Oscillating Sanders (Sterling and Easy) 7-inch Disc Sanders (Black & Decker) 4-inch Grinders (Black & Decker)

MISCELLANEOUS

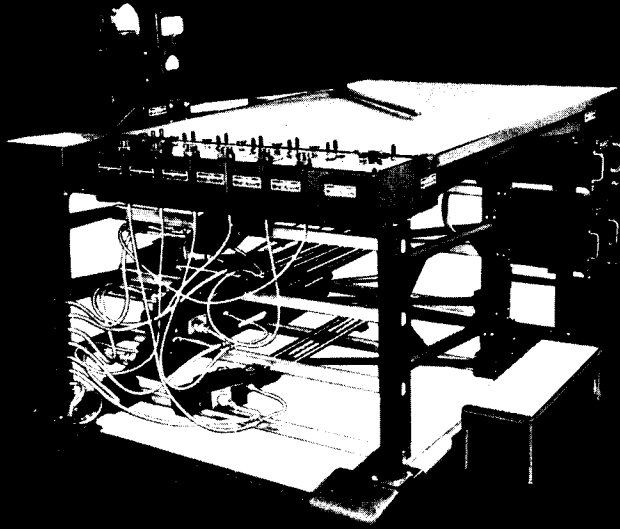
- 1 Pexto #381 3-foot Roll Former
- 1 Di-Acro #2 Bender
- 1 United Shoe Machinery Corp. Model B Eyeletting Machine
- 1 Famco Model S Arbor Press
- 1 Lockformer Rolling Machine
Adequate Cleco Pneumatic Riveting Equipment, both gun and squeezer types

Projection welding of sheet metal assemblies

Lockformer Rolling Machine adaptable to specialized use

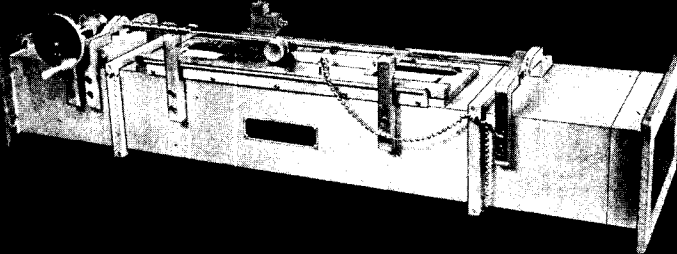


WEST NEWTON DIVISION



NAVIGATION

Errands of mercy and rescue operations to airplanes and ships in distress are speeded by this electro-mechanical computing device called the "Plotting Board". Designed and built by Press Wireless, it quickly and accurately determines the exact position from which a distress signal has been transmitted.



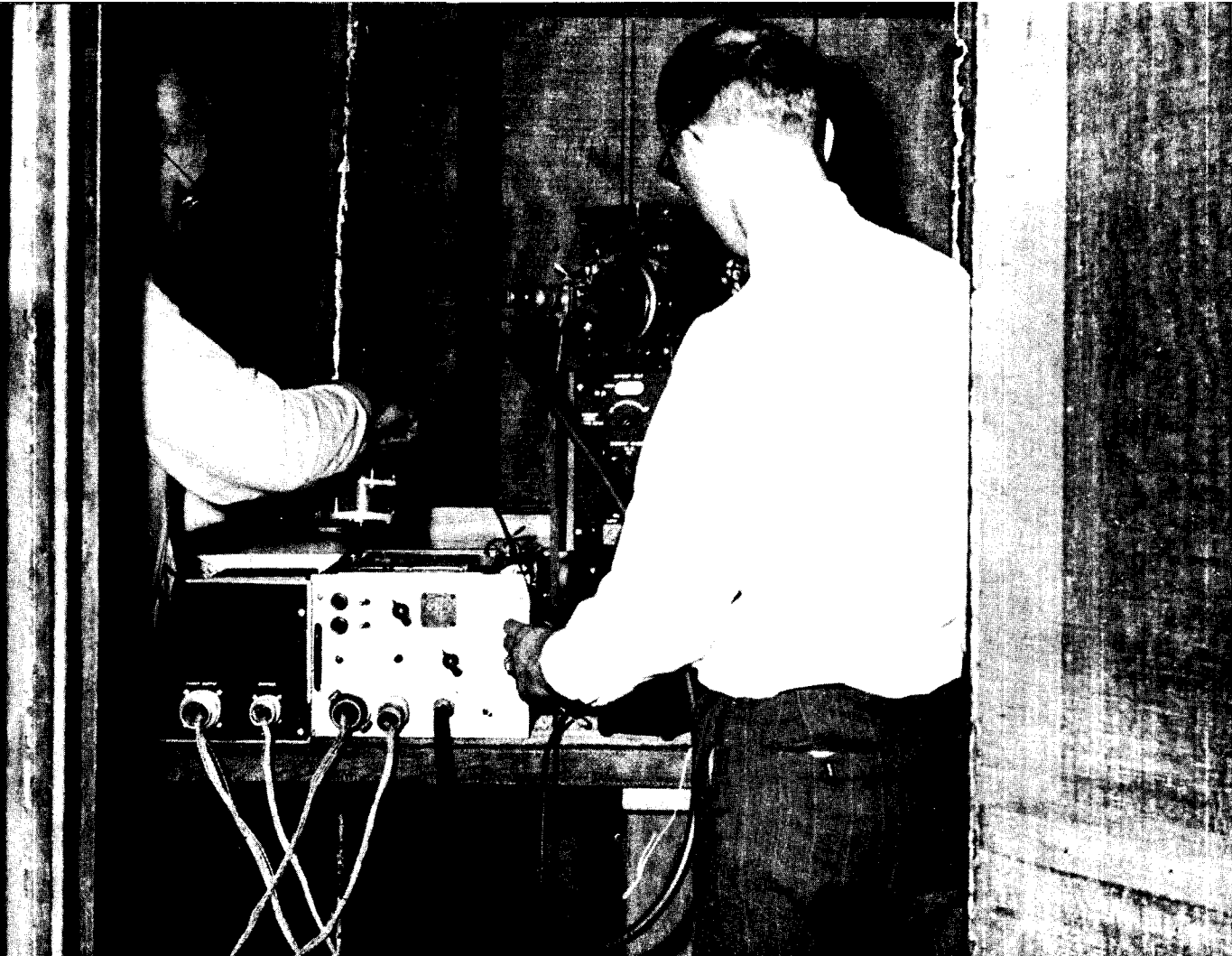
L-BAND SLOTTED LINE

This piece of test equipment is used in the measurement of voltage standing wave ratios in r. f. plumbing associated with radar and other microwave equipment. The precision machining of the component parts is of paramount importance in the manufacture of this type of laboratory test equipment.



RADAR

The efficient and dependable operation of high-powered radar sets is maintained by such test equipment as this "Voltage Divider" produced by Press Wireless. Modulator pulses with peak voltages up to 100,000 volts may be viewed and measured with extreme accuracy when used in conjunction with a synchroscope.



Shielded room for testing electronic equipment

West Newton Division

LABORATORY TEST EQUIPMENT

SIGNAL GENERATOR

- 1 General Radio Type 605-AB
- 1 General Radio Type 1021-P3
- 1 Ferris Instrument Type 22A
- 1 Western Electric Model 8662-WF-43

MISCELLANEOUS GENERATORS

- 1 Press Wireless Sweep Frequency.
- 1 Press Wireless Marker
- 1 Measurements Corporation Square Wave Model 71

OSCILLOSCOPES

- 1 Dumont Cathode Ray Type 208-B
- 1 Dumont Cathode Ray Type 247
- 1 RCA Cathode Ray Type 160-B

OSCILLATOR

- 1 General Radio Interpolation Type 617C
- 1 Hewlett-Packard Audio Model 200-B

METERS

- 1 General Radio Capacitance Meter 1612-AL
- 1 Bird Electronics Termaline Wattmeter Model 67
- 1 Power Meter TS-125/AP
- 1 Boonton Radio "Q" Meter Type 160-A
- 1 Millen Mfg. Co. Wave Meter Type 90607
- 1 Millen Grid Dip Meter Type 90651
- 1 Ferris Radio Noise and Field Strength Meter Model 32-B
- 1 Ballantine Electronic Voltmeter Model 300
- 1 Boonton Radio Electronic Voltmeter Model 62

- 2 RCA Volt Ohmyst Jr.
- 2 Radio City Products Tester Type 461
- 1 Shallcross Milliohmeter Type 670-A
- Miscellaneous Portable Test Meters

STANDARDS

- 1 General Radio Decade Resistance Box Type 602K
- 1 General Radio Decade Capacitor Box Type 219-K
- 1 Clarostat Decade Resistance Box Type 240
- 1 General Radio Frequency Standard Type 698A

MISCELLANEOUS

- 1 Kay Electric "Mega-Sweep"
- 1 Kay Electric "Megalyzer"
- 1 Browning Laboratories Synchroscope Type P4-E
- 1 Ballantine Decade Amplifier Model 220
- 1 Frequency Meter TS-69A/AP
- 1 General Radio Impedance Bridge Type 650-A
- 1 Dumont Voltage Calibrator Type 264-B
- 1 Brown Instrument Potentiometer Model 126W3
- 1 Antennascope Model AT-1
- 1 Press Wireless Hi-Potential Tester O-10 KV
- 1 Crystal Tester TS-268 U
- 1 Motor Generator Set
 - Input 220 V 60 c/s Single Phase
 - Output 28 V DC, 1 Kw Regulated and Metered
- 1 Motor Generator Set
 - Input 220 V, 60 c/s Single Phase
 - Output 110 V, 400 c/s Single Phase 1 Kw
- 1 Wells-Gardner Receiver Model RBL-3
- 1 Hammarlund Super-Pro Receiver
- 1 Receiver TU-56/A
- 1 Screen Test Room
- Miscellaneous Regulated Power Supplies

MACHINE SHOP FACILITIES

SCREW MACHINES AND TURRET LATHES

- 1 B & S #00 Automatic
- 1 B & S #00 Automatic
- 1 Gridley Automatic Sing. Spindle—2¼" rd. Capy.
- 1 Garvin #2 Hand Screw
- 1 Jones & Lamson 3" x 36"
- 1 Bardons & Oliver #3
- 1 Wade #7 Hand Screw

ENGINE LATHES

- 1 16" America
- 1 14" Sidney
- 2 13" Seneca Falls
- 1 12" Seneca Falls
- 1 10" Pratt & Whitney
- 1 9" South Bend
- 2 9" Handy
- 1 7¼" Dalton
- 1 13" x 5' South Bend quick change
- 1 14½" x 6' South Bend tool room

SPEED LATHES

- 2 10" Seneca Falls
- 1 8" Stark
- 4 8" Milliken

PLANERS AND SHAPERS

- 1 30" x 20" x 12' Powell & Woodward
- 1 16" x 22" x 6' Pond, D. W.
- 1 16" x 15" x 4' Schneider & Grossman
- 1 6" x 10" x 2' Bench Planer
- 1 16" x 22" x 8' Queen City Shaper

MILLERS

- 1 #2 Kempsmith—Plain
- 1 #3 Osterlain—Plain

1 #1½" Knight—vertical

1 #1 B & S—universal

2 #0 B & S—hand

1 1 Becker—hand

1 Hardinge—precision tool room

1 #10 B & S production

1 Bridgeport Miller 28" table

1 Bridgeport Miller 7" rising block 42" table with power feeds

GRINDERS

1 6" x 17" Brown & Sharpe Surface Grinder

1 #1 Brown & Sharpe Cylindrical

1 Norton Universal Tool Grinder

1 9" Endless Belt Sander

1 12" Disc Sander

DRILLS

1 4 Spindle—C. G. Allen

1 3 Spindle—C. G. Allen

1 1 Spindle 20" drill

3 2 Spindle 15" Walker Turner

6 1 Spindle 14" Delta—air operated

1 Spindle 16" Canedy—Otto

MISCELLANEOUS

1 Racine 4" Power Hack Saw

1 Starrett 6" Power Hack Saw

1 #1 Bliss Punch Press

3 Milliken Bench Punch Press

6 Arbor Presses

2 Air Compressors

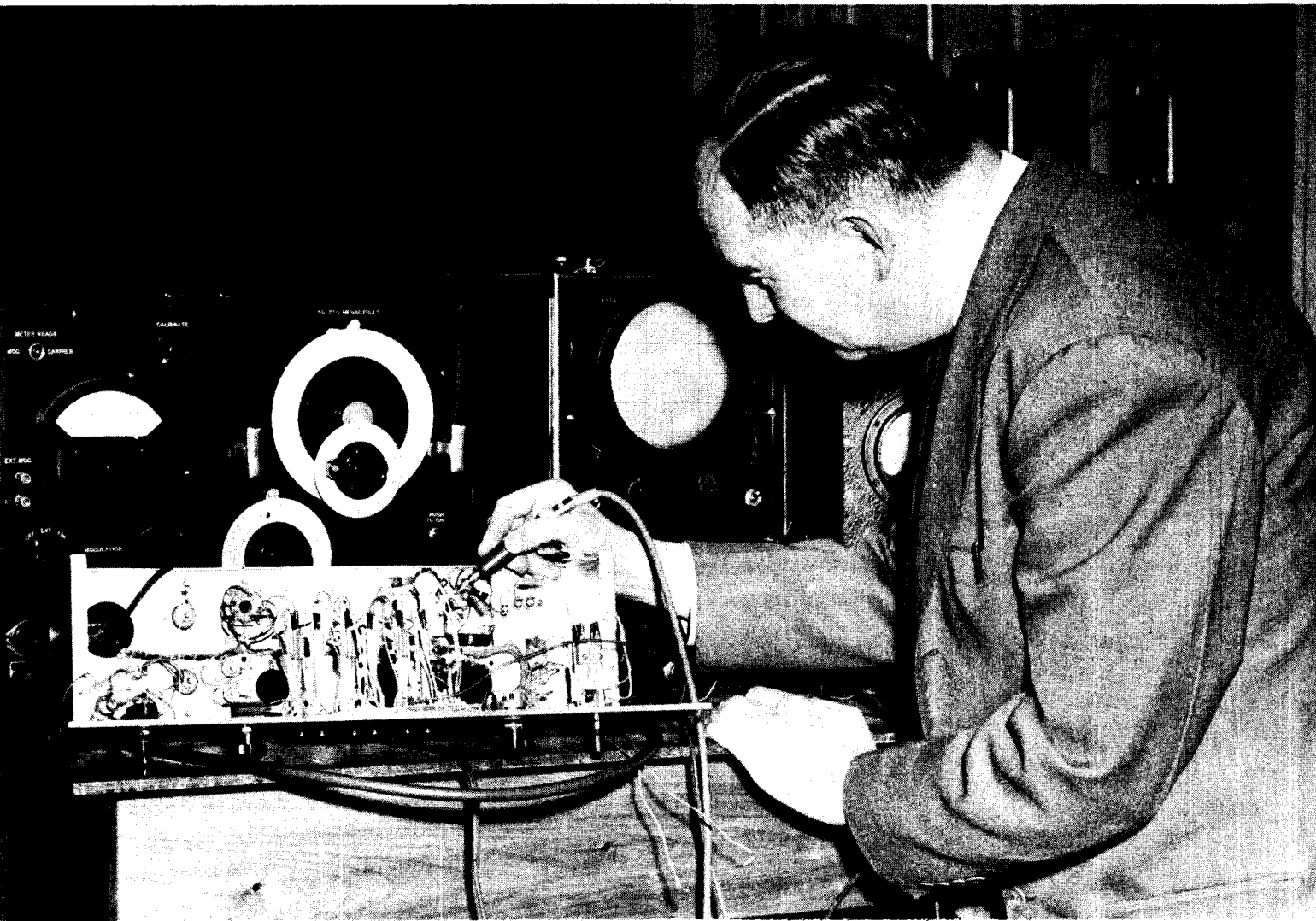
1 Die Filing Machine

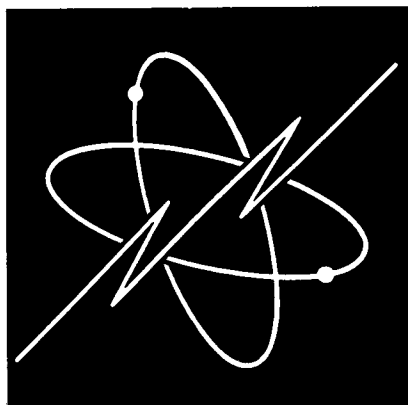
Complete Equipment for Precision Testing and Inspection

Oxy-acetylen and gas for silver brazing soldering equipment

Dynamic Balancer, Bear Model 340R

Engineering tests tone keying equipment





PRESS WIRELESS

MANUFACTURING COMPANY INC.

Executive Offices: Rockville, Conn.

Plants at: Rockville, Conn. and
West Newton, Mass.